

COVID-19 Epidemiology Surveillance Program
MMWR Week #44 – 45, Oct. 31 – Nov. 13, 2021

Division of Epidemiology & Public Health Preparedness (EHP) 775-328-2447

Adam Vazquez, MPH, COVID-19 Epidemiologist AVazquez@washoecounty.gov

Lissa Callahan, COVID-19 Statistician LCallahan@washoecounty.gov

Weekly Summary*

Metrics	Week 44	Week 45
Number of New Cases	1,022	878
New Cases per 100,000 Population	212	182
Breakthrough Cases	309	277
Hospitalizations**	50	33
Deaths**	11	3

- Completed Vaccination Total as of 11/14/2021: 271,066

*For definition and specifics on metrics summarized, please refer to corresponding sections.

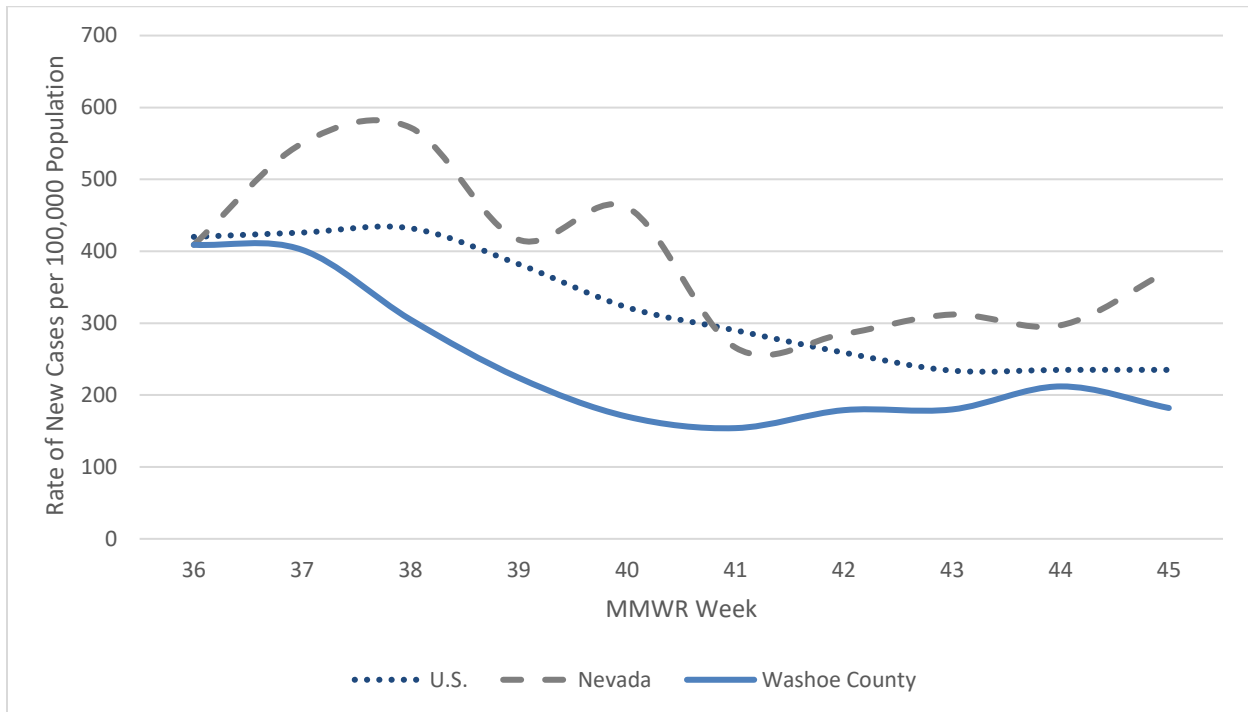
**Note: hospitalization and death totals for each week are subject to change as new reports are received on a daily basis and are often delayed.

Key message(s)

- The Delta variant surge leveled out in the past month without drastic fluctuations.
- The indicators demonstrated a steady increase in case numbers into week 44 from the previous week, but that was followed by a decline in week 45.
- Pfizer-BioNTech 10mcg COVID-19 vaccination has been approved by the FDA and recommended by the CDC and ACIP for children ages 5-11.
- It is now recommended for fully vaccinated individuals to get tested 5-7 days after exposure to a confirmed or probable COVID-19 case.
- Please see the CDC website for new international travel orders prior to traveling out of the country.

COVID-19 Case Information

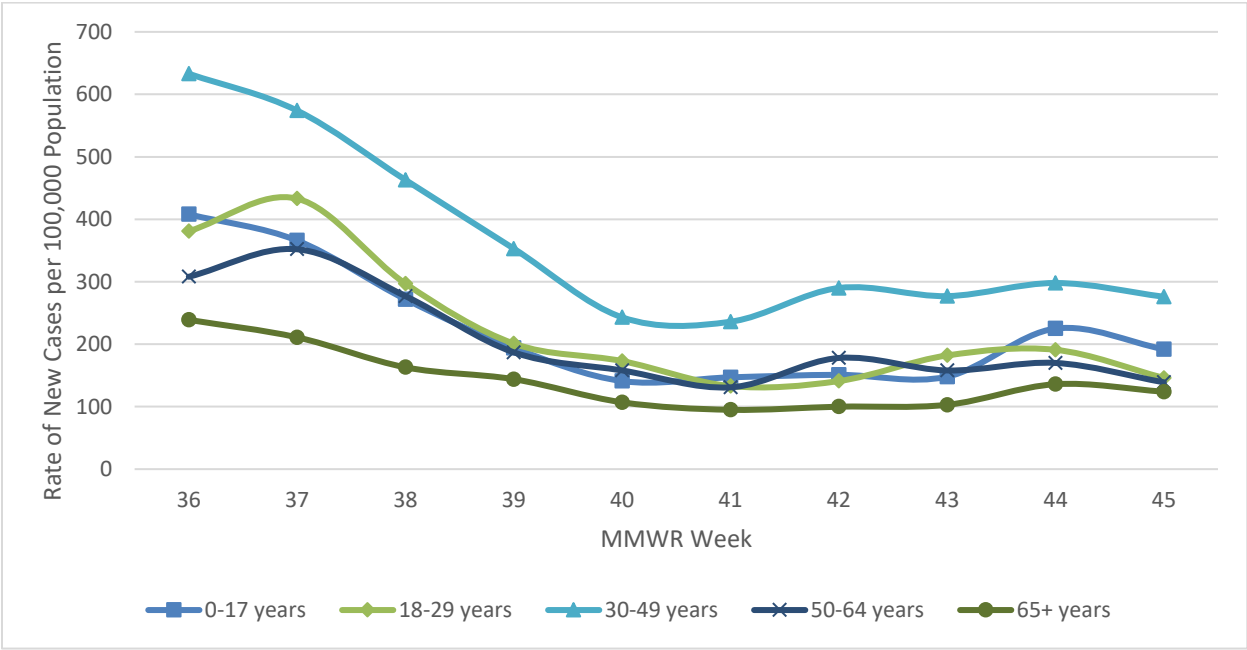
Figure 1. Rate of New Cases Reported by MMWR Week, Washoe County, Nevada, and the United States, 2021



Data source: <https://covid.cdc.gov/covid-data-tracker/#county-view>

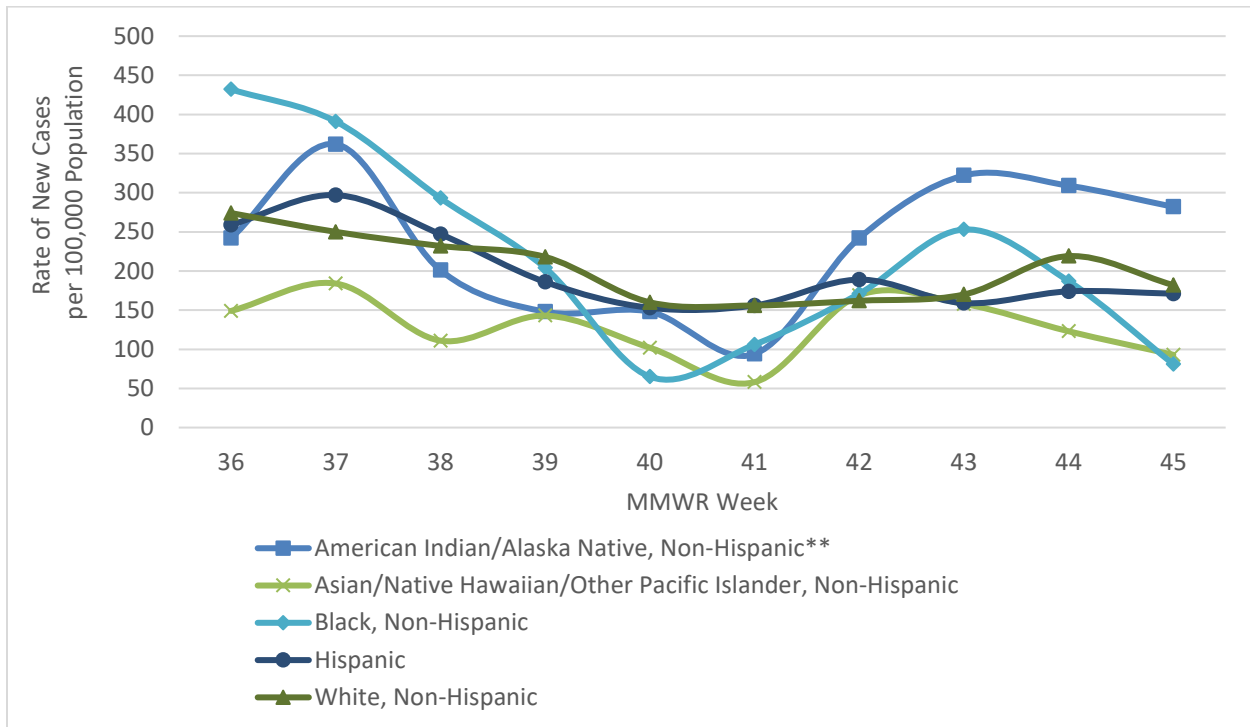
- In Washoe County, case counts decreased. During MMWR week 44 and week 45 there were 212 and 182 new cases per 100,000 population, respectively.
- In the state of Nevada, case counts increased. During MMWR week 44 and week 45 there were 297 and 373 new cases per 100,000 population, respectively.
- In the United States, case counts remained the same. During MMWR week 44 and week 45 there were 235 and 235 new cases per 100,000 population, respectively.

Figure 2. Rate of New Cases Reported by Age Group and MMWR Week, Washoe County, 2021



- From MMWR week 36 through week 45 the age group with the highest rate of new cases reported per 100,000 population was among those aged 30-49 years.
- The highest case rate per 100,000 population by the end of week 45 was the 30-49 age group with 276 new cases per 100,000 population. Followed by the 0-17 age group with 192 new cases per 100,000 population.

Figure 3. Rate of New Cases Reported by Race/Ethnicity* and MMWR Week, Washoe County, 2021



*Note: From MMWR week 36 to week 45, 19.49% of cases were recorded as “Declined to answer”, “Multiple”, “Other”, or “Unknown” and rates per 100,000 population are unable to be calculated for those categories.

**Note: Tribal populations may be underrepresented as data source does not include Indian Health Services (IHS) data, which may contain vaccination records for tribal members and those who access services through IHS clinics.

- From MMWR week 36 through week 38, those who identified as Black had the highest rate of new cases per 100,000 population.
 - Week 36 = 432 cases
 - Week 37 = 391 cases
 - Week 38 = 293 cases
- From MMWR week 42 through 45, those who identified as American Indian/Alaska Native had the highest rate of new cases per 100,000 population.
 - Week 42 = 242 cases
 - Week 43 = 322 cases
 - Week 44 = 309 cases
 - Week 45 = 282 cases

Hospitalizations, ICU Status, & Deaths

COVID-19 hospitalizations are defined as those hospitalized for greater than or equal to 24 hours and have a positive SARS-CoV-2 laboratory test.

COVID-19 deaths are defined as decedents who have had a positive PCR COVID-19 lab report ≤ 30 days from death or post-mortem. This includes deaths attributed to COVID-19 related illnesses and, if not specifically listed on death certificate, a positive PCR COVID-19 lab, dependent on the manner of death. See full definition in Glossary/Key Terms at the end of the report.

Table 1. Number and Percent of New Cases Reported by Age and Hospitalization Status, MMWR Weeks* 44 and 45, Washoe County, 2021

			Age Group				
			0-17	18-29	30-49	50-64	65+
MMWR Week	44	Total Cases	225	191	298	170	136
		% Hospitalized	0.4%	0.0%	2.7%	10.0%	17.6%
	45	Total Cases	192	146	276	139	124
		% Hospitalized	2.1%	1.4%	1.8%	5.0%	12.1%

* Note: hospitalization totals for each week are subject to change as new reports are received on a daily basis and are often delayed.

- During MMWR week 44 and week 45 the age groups with the highest percentage of total cases resulting in hospitalization were those aged 50-64 and 65+ years of age.
- In Washoe county, during MMWR week 44 and week 45, 10.0% and 5.0% of the cases in the 50-64 age group were hospitalized, respectively.
- In Washoe county, during MMWR week 44 and week 45, 17.6% and 12.1% of the cases in the 65+ age group were hospitalized, respectively.

Table 2. COVID-19 Associated Deaths by Age Group and MMWR Week*, Washoe County, 2021

MMWR Week	Total Cases	Age Group				
		0-17	18-29	30-49	50-64	65+
36	1,970	0	0	3	5	13
37	1,937	0	0	2	6	14
38	1,472	0	0	2	10	12
39	1,079	0	0	2	5	11
40	822	0	0	1	2	2
41	742	0	0	2	0	8
42	861	0	2	1	2	6
43	868	0	0	2	5	6
44	1,022	0	0	1	3	7
45	878	0	0	1	0	2

*Note: death totals for each week are subject to change as new reports are received on a daily basis and are often delayed.

On the left side of Table 3 below, ‘Weekly’, are the hospitalization, ICU, and death data associated with the new cases by MMWR week.

The right side of the table, ‘2021 Cumulative’, contains rolling cumulative values for the hospitalization, ICU, and death data associated with the total cases in 2021 through each MMWR week. The new case data is added to the cumulative rolling total each week.

Table 3. Number and Percentage of Cases Reported by Hospitalization, ICU, and Death Status by MMWR Week*, Washoe County, 2021

MMWR Week	New Cases	Weekly						2021 Cumulative						
		Hospitalized		ICU		Death		Total Cases	Hospitalized		ICU		Death	
		#	%	#	%	#	%	#	#	%	#	%	#	%
36	1,970	88	4.5	14	0.7	21	1.1	22,230	1,332	6.0	277	1.2	262	1.2
37	1,937	78	4.0	17	0.9	22	1.1	24,167	1,410	5.8	294	1.2	284	1.2
38	1,472	71	4.8	14	1.0	24	1.6	25,639	1,481	5.8	308	1.2	308	1.2
39	1,079	61	5.7	12	1.1	18	1.7	26,718	1,542	5.8	320	1.2	326	1.2
40	822	46	5.6	6	0.7	5	0.6	27,540	1,588	5.8	326	1.2	331	1.2
41	742	39	5.3	9	1.2	10	1.3	28,282	1,627	5.8	335	1.2	341	1.2
42	861	50	5.8	9	1.0	11	1.3	29,143	1,677	5.8	344	1.2	352	1.2
43	868	70	8.1	14	1.6	13	1.5	30,011	1,747	5.8	358	1.2	365	1.2
44	1,022	50	4.9	12	1.2	11	1.1	31,033	1,797	5.8	370	1.2	376	1.2
45	878	33	3.8	5	0.6	3	0.3	31,911	1,830	5.7	375	1.2	379	1.2

*Note: hospitalization, ICU, and death totals for each week are subject to change as new reports are received on a daily basis and are often delayed.

Breakthrough Cases

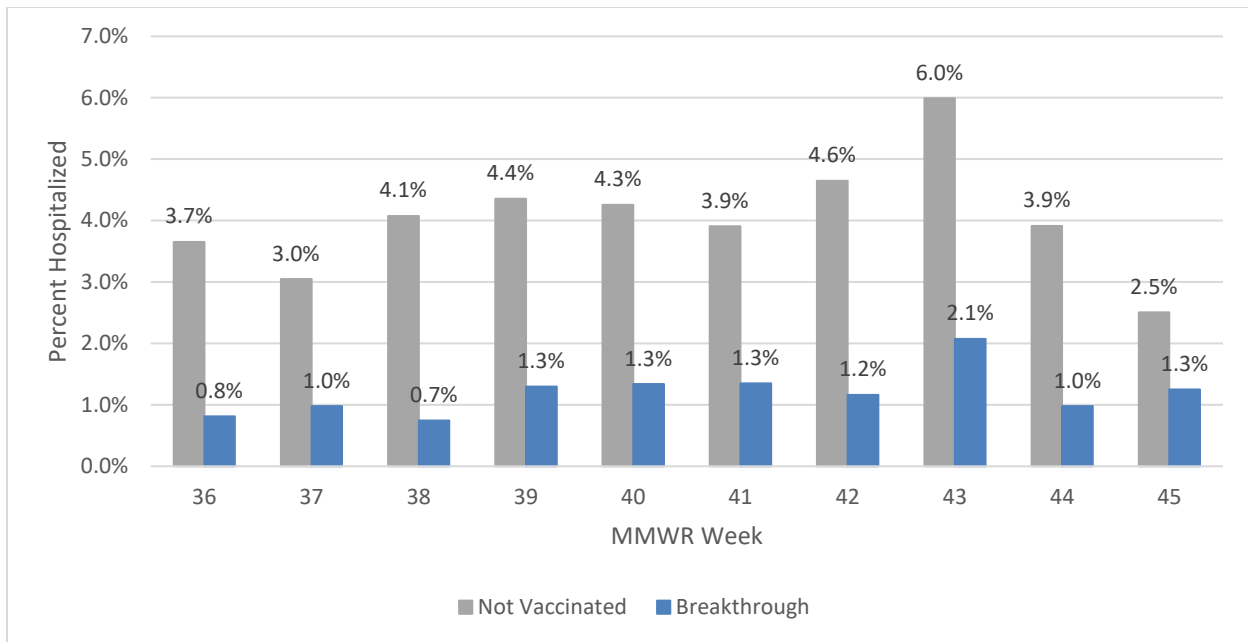
In Washoe County a breakthrough COVID-19 case is defined as a Washoe County resident who has SARS-CoV-2 PCR or antigen detected through laboratory testing 14 or more days after completing the primary series of an FDA-authorized COVID-19 vaccine.

Table 4. Number and Percentage of Cases Reporting Hospitalization, ICU, and Death by Vaccination Status and MMWR Week*, Washoe County, 2021

MMWR Week	All Cases				Unvaccinated Cases						Breakthrough Cases					
	New Cases	Total Hospitalized	Total ICU	Total Death	Hospitalized		ICU		Death		Hospitalized		ICU		Death	
					#	%	#	%	#	%	#	%	#	%	#	%
36	1,970	88	14	21	72	3.7	11	0.6	18	0.9	16	0.8	3	0.2	3	0.2
37	1,937	78	17	22	59	3.0	10	0.5	19	1.0	19	1.0	7	0.4	3	0.2
38	1,472	71	14	24	60	4.1	12	0.8	21	1.4	11	0.7	2	0.1	3	0.2
39	1,079	61	12	18	47	4.4	9	0.8	14	1.3	14	1.3	3	0.3	4	0.4
40	822	46	6	5	35	4.3	5	0.6	5	0.6	11	1.3	1	0.1	0	0.0
41	742	39	9	10	29	3.9	8	1.1	8	1.1	10	1.3	1	0.1	2	0.3
42	861	50	9	11	40	4.6	8	0.9	9	1.0	10	1.2	1	0.1	2	0.2
43	868	70	14	13	52	6.0	10	1.2	10	1.2	18	2.1	4	0.5	3	0.3
44	1,022	50	12	11	40	3.9	10	1.0	11	1.1	10	1.0	2	0.2	0	0.0
45	878	33	5	3	22	2.5	3	0.3	1	0.1	11	1.3	2	0.2	2	0.2

*Note: hospitalization, ICU, and death totals for each week are subject to change as new reports are received on a daily basis and are often delayed.

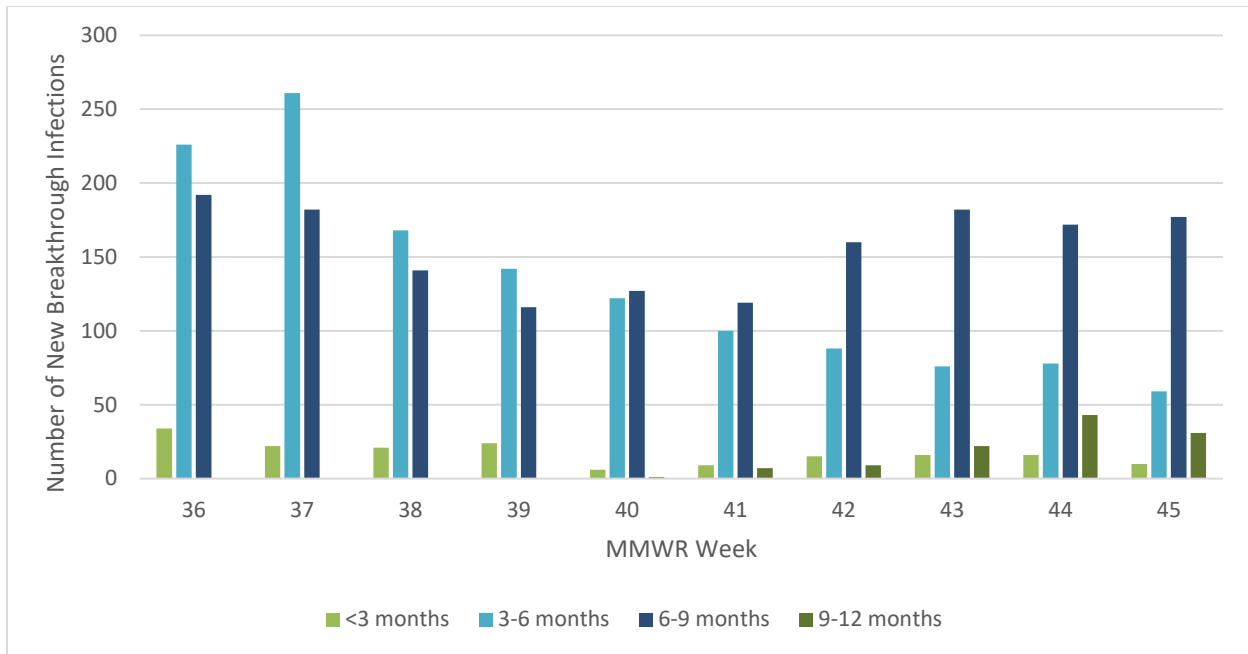
Figure 4. Percentage of Reported Cases Hospitalized by Vaccination Status and MMWR Week*, Washoe County, 2021



*Note: hospitalization totals for each week are subject to change as new reports are received on a daily basis and are often delayed.

- From MMWR week 36 through week 45, there was a higher percentage of hospitalized unvaccinated cases compared to vaccinated cases.
- In Washoe County, during MMWR week 43 through 45, there was a decrease in the percentage of reported cases hospitalized trend which may be due to the delay in hospitalization data.
- From MMWR week 44 to week 45, the percentage of unvaccinated cases hospitalized decreased from 3.9% to 2.5%.
- From MMWR week 44 to week 45, the percentage of vaccinated cases hospitalized decreased from 1.0% to 1.3%.

Figure 5. Number of Breakthrough Infections by Duration from Last Dose of Vaccination to Infection by MMWR Week, Washoe County, 2021



- In Washoe County, many of the current breakthrough cases are occurring in individuals who were vaccinated in the spring of 2021.
- Between MMWR week 44 and week 45, the number of breakthrough cases in individuals who were vaccinated 9-12 months prior to SARS-CoV-2 infection decreased after increasing since MMWR week 40.

Vaccinations

Current dose and vaccination totals and percentages for Washoe County residents as of 11/14/2021.

123,912 doses reported as administered per 100,000 population (to date)

62,492 (62.49% of population) vaccinations reported as initiated per 100,000 population

56,221 (56.22% of population) vaccinations reported as completed per 100,000 population

73.25% of population 12 years and older initiated vaccination

65.90% of population 12 years and older completed vaccination

Figure 6. Percentage of Population Fully Vaccinated, Washoe County, 2021

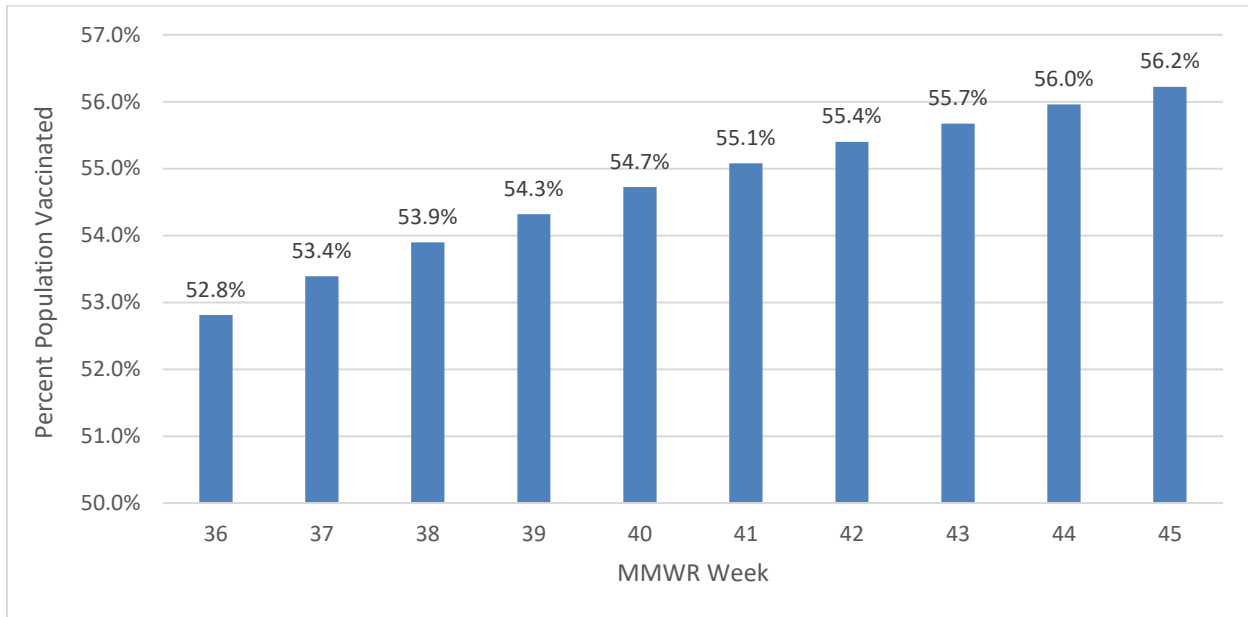


Table 5. Percentage of Population Vaccinated by Sex, Age Group, and Race/Ethnicity*, Washoe County, 2021

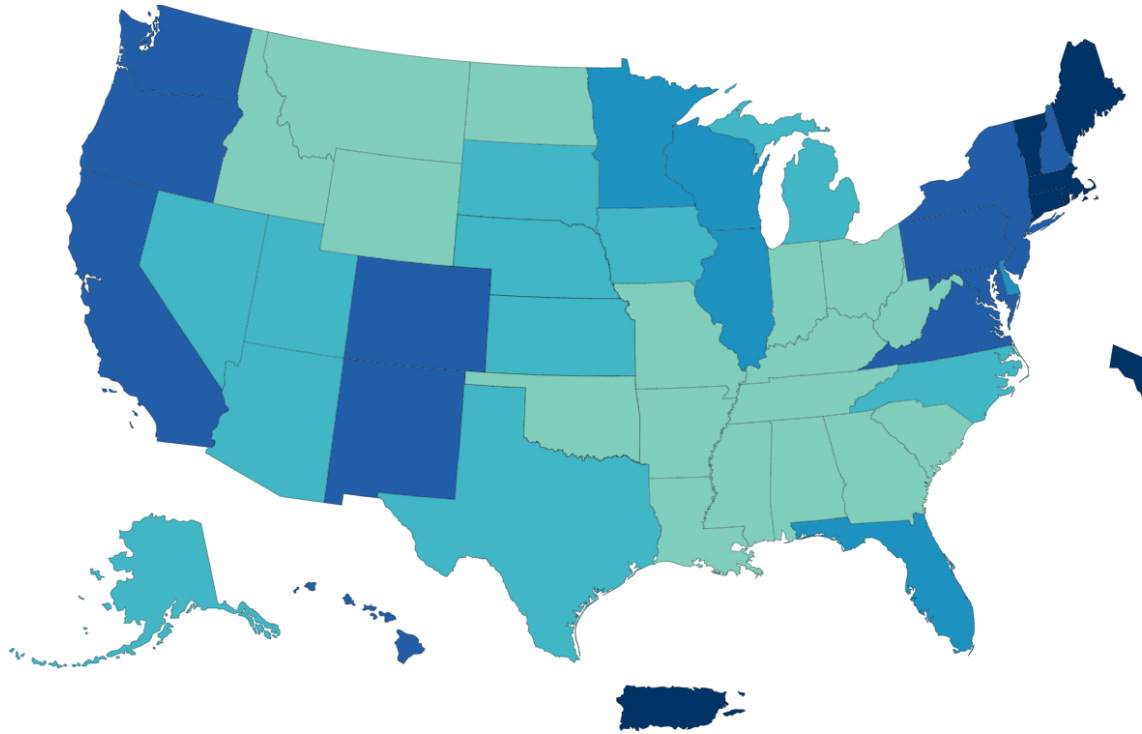
		% Population Vaccinated
Sex	Female	60.2%
	Male	54.0%
Age Group	0-17 years	16.5%
	18-29 years	58.1%
	30-49 years	63.1%
	50-64 years	75.0%
	65+ years	82.8%
Race / Ethnicity	American Indian/Alaska Native, Non-Hispanic**	28.0%
	Asian/Native Hawaiian/Other Pacific Islander, Non-Hispanic	42.2%
	Black, Non-Hispanic	32.8%
	Hispanic	42.0%
	White, Non-Hispanic	45.6%

*Note: From MMWR week 36 to week 45, 19.49% of cases were recorded as “Declined to answer”, “Multiple”, “Other”, or “Unknown” and rates per 100,000 population are unable to be calculated for those categories.

**Note: Tribal populations may be underrepresented as data source does not include Indian Health Services (IHS) data, which may contain vaccination records for tribal members and those who access services through IHS clinics.

- In Washoe County, the 65+ age group has the highest percentage vaccinated population, with 82.8% of the 65+ population. This group is trailed by the 50-64 age group with 75.0% of individuals vaccinated.
- In Washoe County, those who identify as White, Non-Hispanic have the highest percent vaccinated population (45.6%), followed by Asian/Native Hawaiian/Other Pacific Islander, Non-Hispanic (42.2%) and Hispanic (42.0%).

Figure 7. Total COVID-19 Vaccine Doses Administered Reported to the CDC by State/Territory and for Select Federal Entities per 100,000 of the Total Population



Territories



Federal Entities



Data for Federal Entities are presented here and are also incorporated into the respective jurisdictional totals

Total Doses Administered per 100,000

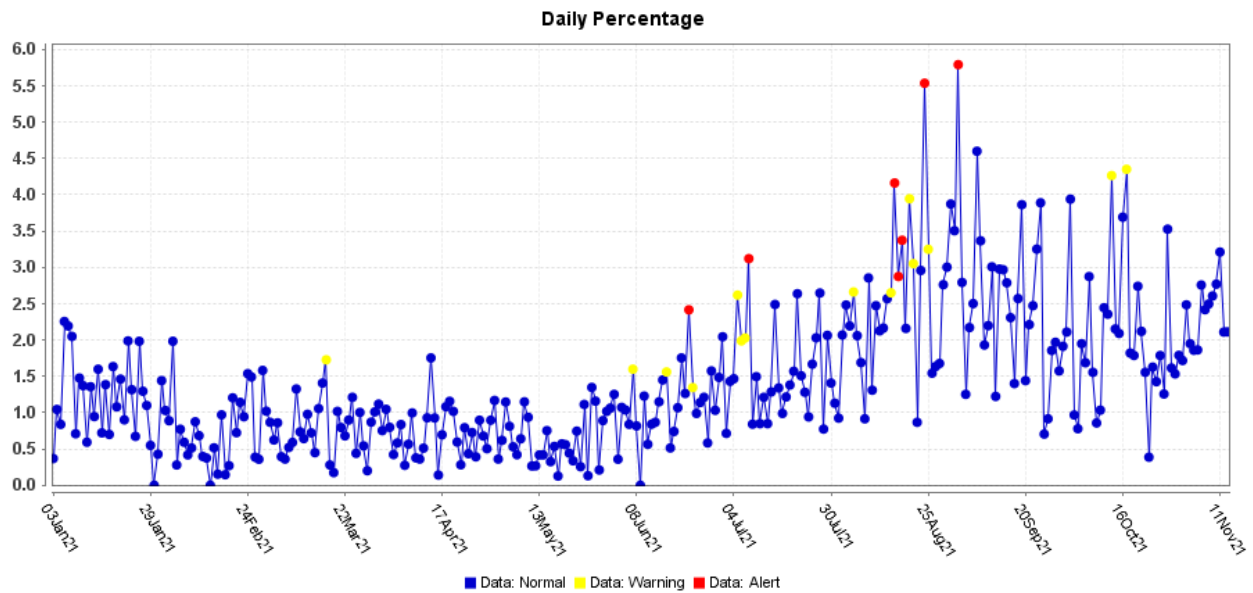


Data source for U.S. map for vaccination doses administered, as of 11/15/2021 6:00 AM ET. Posted: Monday, November 15, 2021, 2:00 PM ET, CDC COVID Data Tracker https://covid.cdc.gov/covid-data-tracker/#vaccinations_vacc-total-admin-rate-total

Surveillance Data

Percentage of persons indicating COVID-19 was the reason for their visit to the Emergency Room (ER) is presented in Figure 8. The overlay below depicts COVID-19 in blue. Alerts appear as yellow and/or red dots. They indicate an unusually high percentage of COVID-19 visits according to ESSENCE algorithms.

Figure 8. Percentage of ER Visits due to COVID through MMWR Week 45, 2021, Washoe County



Data source: ESSENCE

Glossary/Key Terms

COVID-19 Case

Coronavirus Disease 2019 (COVID-19) cases counted in this document are confirmed or probable cases as determined by meeting confirmatory laboratory evidence, clinical criteria, and/or epidemiologic linkage as defined on the CDC website here:

<https://ndc.services.cdc.gov/case-definitions/coronavirus-disease-2019-2021/>

COVID-19 Hospitalization

COVID-19 hospitalizations are counted as those hospitalized for greater than or equal to 24 hours and have a positive SARS-CoV-2 laboratory test.

COVID-19 Death

- Decedents with a positive PCR COVID-19 lab report (≤ 30 days from death or post-mortem)
- Decedents with a death certificate that lists a COVID-19-related term as a cause of death in Part I and have a history of a positive PCR COVID-19 lab report or

COVID-related terms include names for COVID-19, such as SARS-CoV-2, coronavirus, coronavirus-19, etc.

- Decedents with a pending cause of death that had a positive PCR lab test within 30 days of death AND symptoms indicative of COVID-19 (per investigation or medical report)
- Decedents with a death certificate that does not specifically list a COVID-19-related term that had a positive PCR lab result \leq 30 days before death and/or died within 30 days of COVID-19 symptom onset AND died in a manner of death deemed to be 'natural' on the death certificate

Exception: Deaths due to non-natural causes (e.g., accidental, intentional self-harm, homicide) should not be counted as a COVID-19 death even if the deceased had a confirmatory positive lab test within 30 days of death

Links

WCHD COVID Dashboard

<https://washoe.maps.arcgis.com/apps/dashboards/0db36fa8fa9c47758bc38210e4c23818>

WCHD website for COVID information and vaccine appointments

<https://www.washoecounty.gov/health/index.php?choice=bdr>

CDC COVID Data Tracker <https://covid.cdc.gov/covid-data-tracker/>

This COVID Report and others can be found at <https://covid19washoe.com/daily-updates/washoe-county-covid-19-data-report/>