

COVID-19 Epidemiology Surveillance Program
MMWR Week #46 – 47, Nov. 14 – Nov. 27, 2021

Division of Epidemiology & Public Health Preparedness (EHP) 775-328-2447

Adam Vazquez, MPH, COVID-19 Epidemiologist AVazquez@washoecounty.gov

Lissa Callahan, COVID-19 Statistician LCallahan@washoecounty.gov

Weekly Summary*

Metrics	Week 46	Week 47
Number of New Cases	783	558
New Cases per 100,000 Population	162	116
Breakthrough Cases	261	183
Hospitalizations**	46	26
Deaths**	13	8

- Completed Vaccination Total through 11/28/2021: 273,714 persons

*For definition and specifics on metrics summarized, please refer to corresponding sections.

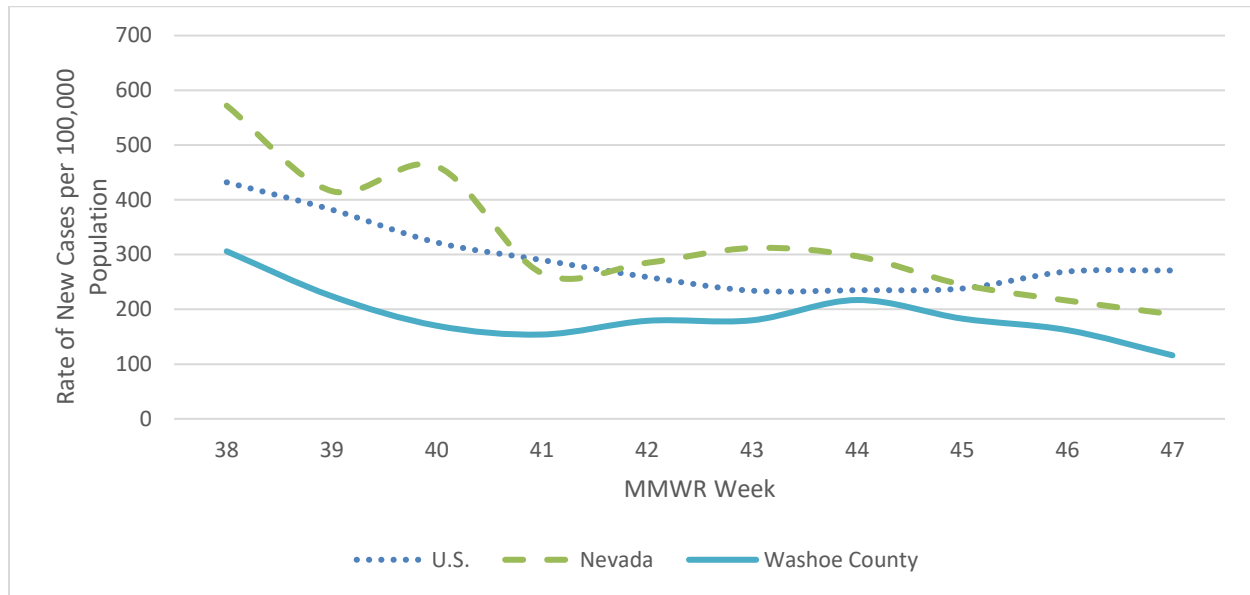
**Note: hospitalization and death totals for each week are subject to change as new reports are received on a daily basis and are often delayed, causing underreporting in more recent MMWR weeks.

Key message(s)

- Case counts since the Delta variant surge have decreased in the past month.
- The case counts demonstrate a steady decrease in cases from week 44 through week 47.
- There have not been any cases of Omicron variant identified in Washoe County to date.

COVID-19 Case Information

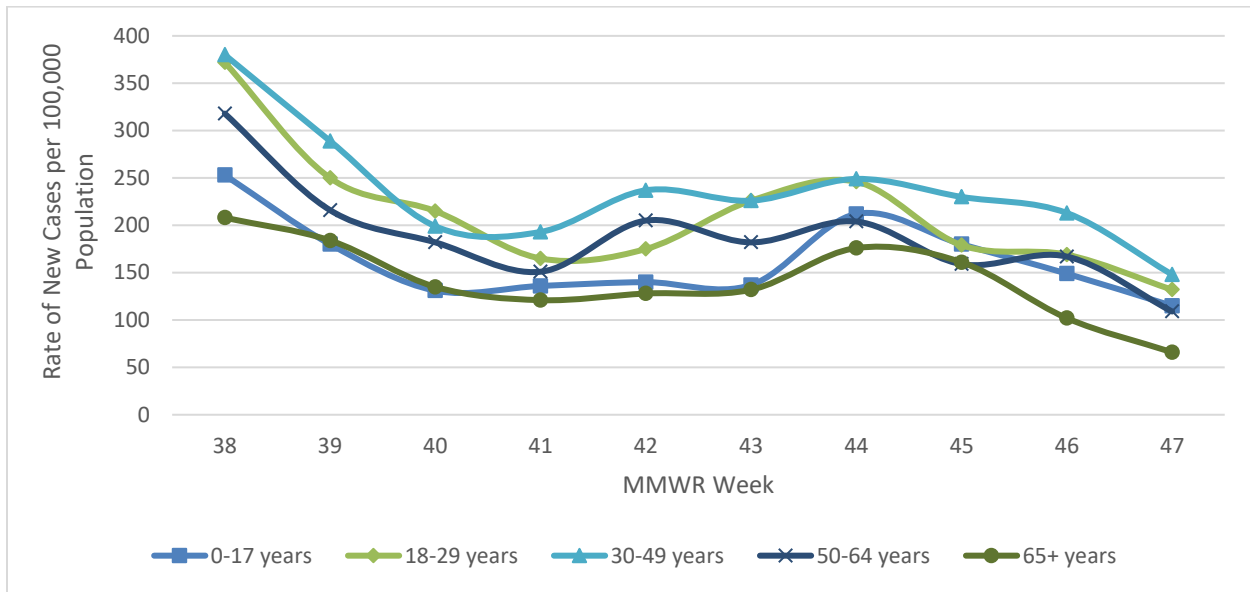
Figure 1. Rate of New Cases Reported by MMWR Week, Washoe County, Nevada, and the United States, 2021



Data source: <https://covid.cdc.gov/covid-data-tracker/#county-view>

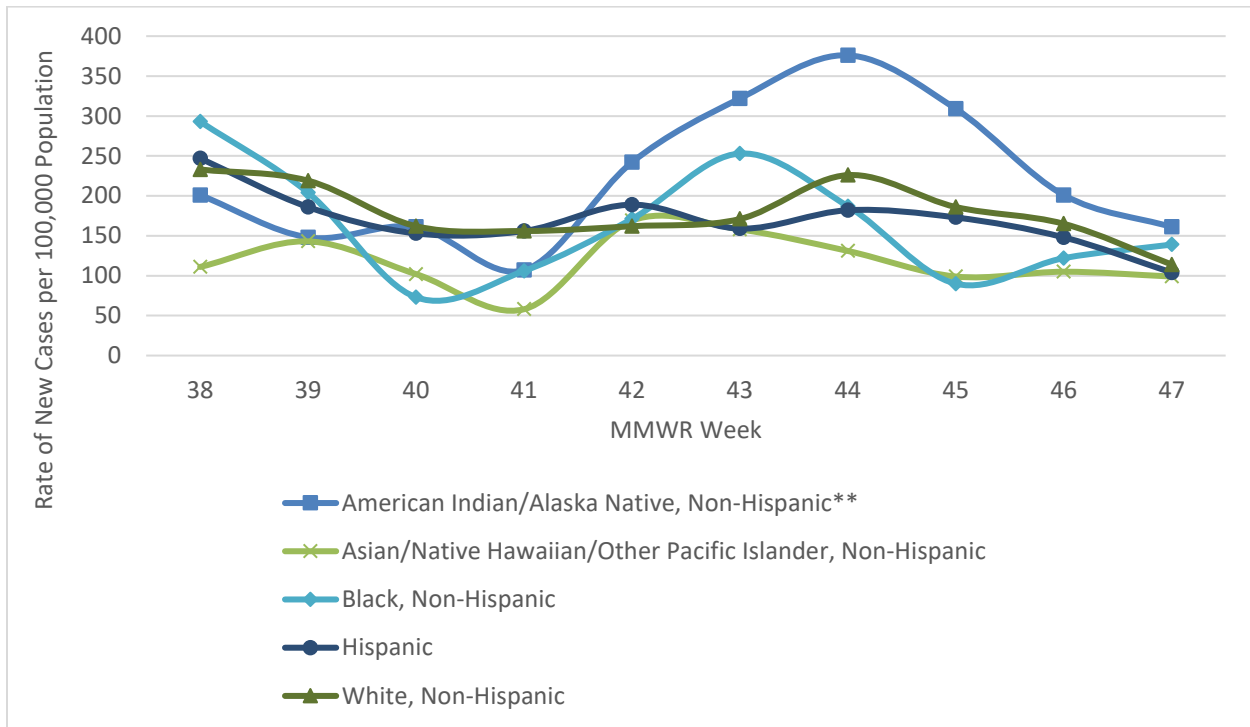
- In Washoe County, case counts decreased. During MMWR week 46 and week 47 there were 162 and 116 new cases per 100,000 population, respectively.
- In the state of Nevada, case counts decreased. During MMWR week 46 and week 47 there were 216 and 191 new cases per 100,000 population, respectively.
- In the United States, case counts increased and remained steady. During MMWR week 46 and week 47 there were 269 and 271 new cases per 100,000 population, respectively.

Figure 2. Rate of New Cases Reported by Age Group and MMWR Week, Washoe County, 2021



- From MMWR week 38 through week 47 the age group with the highest rate of new cases reported per 100,000 population was among those aged 30-49 years.
- The age group with highest case rate per 100,000 population by the end of week 47 was the 30-49 age group with 148 new cases per 100,000 population. Followed by the 18-29 age group with 132 new cases per 100,000 population.

Figure 3. Rate of New Cases Reported by Race/Ethnicity* and MMWR Week, Washoe County, 2021



*Note: From MMWR week 38 to week 47, 9.9% of cases were recorded as “Declined to answer”, “Multiple”, “Other”, or “Unknown” and rates per 100,000 population are unable to be calculated for those categories.

- From MMWR week 38 through week 40, those who identified as Black decreased from the highest rate to the lowest rate of new cases per 100,000 population.
 - Week 38 = 293 cases
 - Week 39 = 204 cases
 - Week 40 = 73 cases
- From MMWR week 42 through 47, those who identified as American Indian/Alaska Native had the highest rate of new cases per 100,000 population.
 - Week 42 = 242 cases
 - Week 43 = 322 cases
 - Week 44 = 376 cases
 - Week 45 = 309 cases
 - Week 46 = 201 cases
 - Week 47 = 161 cases

Hospitalizations, ICU Status, & Deaths

COVID-19 hospitalizations are defined as those hospitalized for greater than or equal to 24 hours and have a positive SARS-CoV-2 laboratory test.

COVID-19 deaths are defined as decedents who have had a positive PCR COVID-19 lab report \leq 30 days from death or post-mortem. This includes deaths attributed to COVID-19 related illnesses and, if not specifically listed on death certificate, a positive PCR COVID-19 lab, dependent on the manner of death. See full definition in Glossary/Key Terms at the end of the report.

Table 1. Number and Percent of New Cases Reported by Age and Hospitalization Status, MMWR Weeks* 46 and 47, Washoe County, 2021

			Age Group				
			0-17	18-29	30-49	50-64	65+
MMWR Week	46	Total Cases	161	136	261	145	80
		% Hospitalized	0.6%	1.5%	3.1%	12.4%	21.3%
	47	Total Cases	124	106	181	95	52
		% Hospitalized	0.8%	0.9%	4.4%	7.4%	17.3%

* Note: hospitalization totals for each week are subject to change as new reports are received on a daily basis and are often delayed, causing underreporting in more recent MMWR weeks.

- During MMWR week 46 and week 47 the age groups with the highest percentage of total cases resulting in hospitalization were those aged 50-64 and 65+ years of age.
- In Washoe County, during MMWR week 46 and week 47, 12.4% and 7.4% of the cases in the 50-64 age group were hospitalized, respectively.
- In Washoe County, during MMWR week 46 and week 47, 21.3% and 17.3% of the cases in the 65+ age group were hospitalized, respectively.

Table 2. Number and Percentage of Cases Reported by Hospitalization and ICU Status by MMWR Week*, Washoe County, 2021

MMWR Week	New Cases	Hospitalized		ICU	
		#	%	#	%
38	1,477	72	4.9	14	0.9
39	1,080	61	5.6	12	1.1
40	821	46	5.6	7	0.9
41	742	39	5.3	9	1.2
42	861	52	6.0	11	1.3
43	868	74	8.5	15	1.7
44	1,046	54	5.2	13	1.2
45	884	45	5.1	9	1.0
46	783	46	5.9	5	0.6
47	558	26	4.7	3	0.5

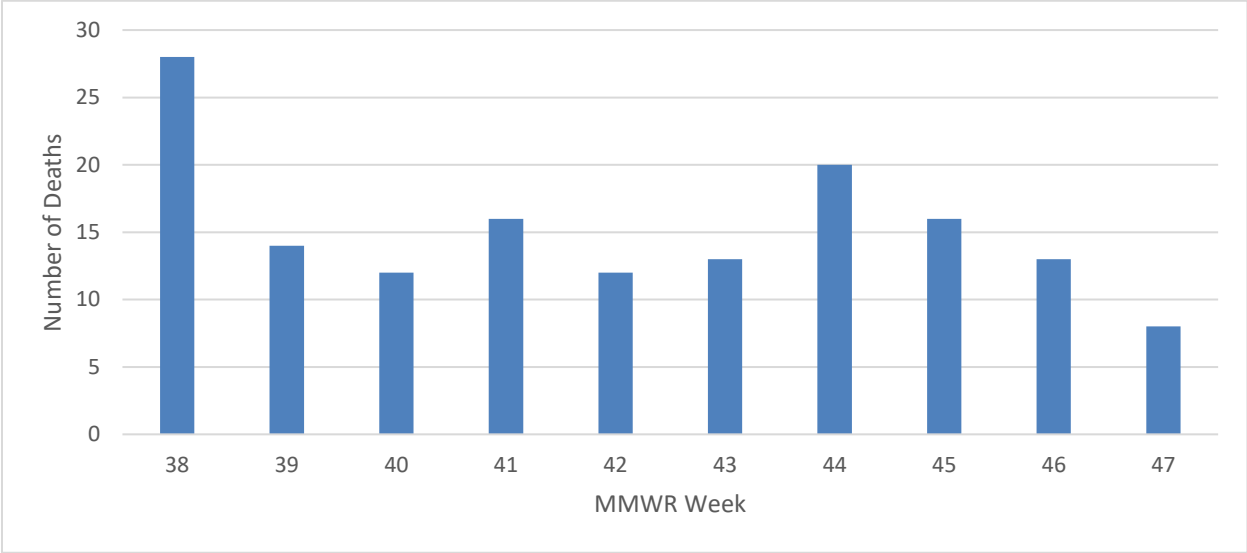
*Note: hospitalization and ICU totals for each week are subject to change as new reports are received on a daily basis and are often delayed, causing underreporting in more recent MMWR weeks.

Table 3. COVID-19 Deaths by Age Group and Month of Death, Washoe County, 2021

Month	Total Deaths	Age Group				
		0-17	18-29	30-49	50-64	65+
January	91	0	0	7	12	72
February	38	0	0	0	4	34
March	13	0	0	2	4	7
April	7	0	0	1	2	4
May	10	0	1	2	2	5
June	5	0	0	1	1	3
July	7	0	0	2	2	3
August	68	0	1	11	14	42
September	98	0	1	8	33	56
October	62	0	0	9	18	35
November	52	0	2	6	12	32

*Note: death totals for each week are subject to change as new reports are received on a daily basis and are often delayed, causing underreporting in more recent MMWR weeks.

Figure 4. Number of Deaths by Week of Death, Washoe County, 2021



*Note: death totals for each week are subject to change as new reports are received on a daily basis and are often delayed, causing underreporting in more recent MMWR weeks.

Breakthrough Cases

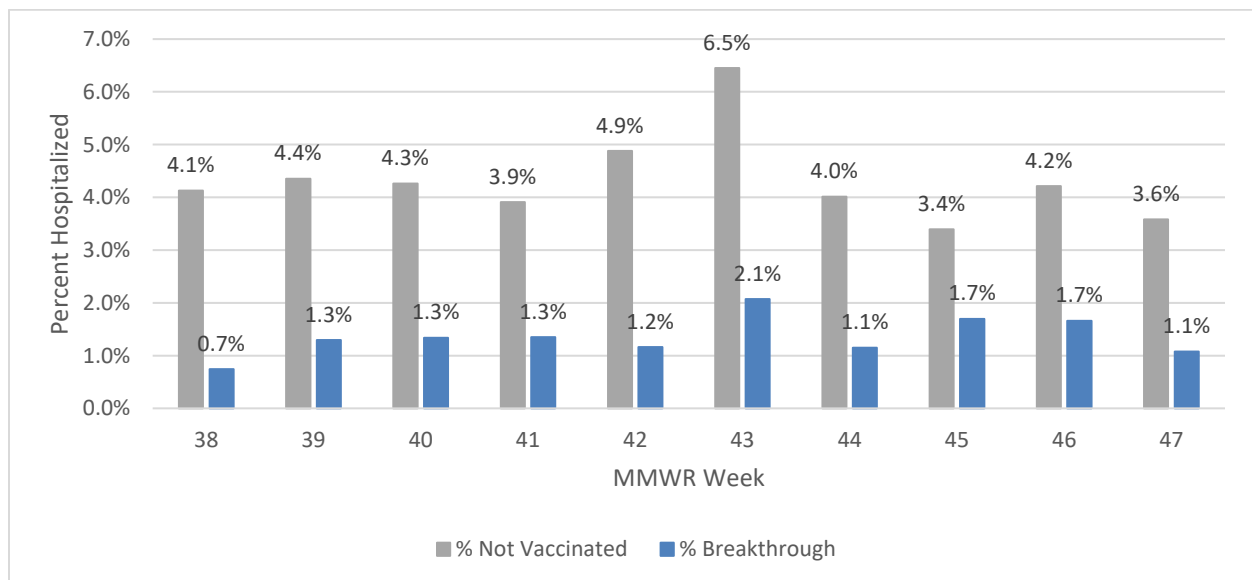
A breakthrough COVID-19 case is defined as a Washoe County resident who has SARS-CoV-2 PCR or antigen detected through laboratory testing 14 or more days after completing the primary series of an FDA-authorized COVID-19 vaccine.

Table 4. Number and Percentage of Cases Reporting Hospitalization and ICU by Vaccination Status and MMWR Week*, Washoe County, 2021

MMWR Week	All Cases			Unvaccinated Cases				Breakthrough Cases			
	New Cases	Total Hospitalized	Total ICU	Hospitalized		ICU		Hospitalized		ICU	
				#	%	#	%	#	%	#	%
38	1,477	72	14	61	4.1	12	0.8	11	0.7	2	0.1
39	1,080	61	12	47	4.4	9	0.8	14	1.3	3	0.3
40	821	46	7	35	4.3	5	0.6	11	1.3	2	0.2
41	742	39	9	29	3.9	8	1.1	10	1.3	1	0.1
42	861	52	11	42	4.9	10	1.2	10	1.2	1	0.1
43	868	74	15	56	6.5	11	1.3	18	2.1	4	0.5
44	1,046	54	13	42	4.0	10	1.0	12	1.1	3	0.3
45	884	45	9	30	3.4	7	0.8	15	1.7	2	0.2
46	783	46	5	33	4.2	4	0.5	13	1.7	1	0.1
47	558	26	3	20	3.6	3	0.5	6	1.1	0	0.0

*Note: hospitalization and ICU totals for each week are subject to change as new reports are received on a daily basis and are often delayed, causing underreporting in more recent MMWR weeks.

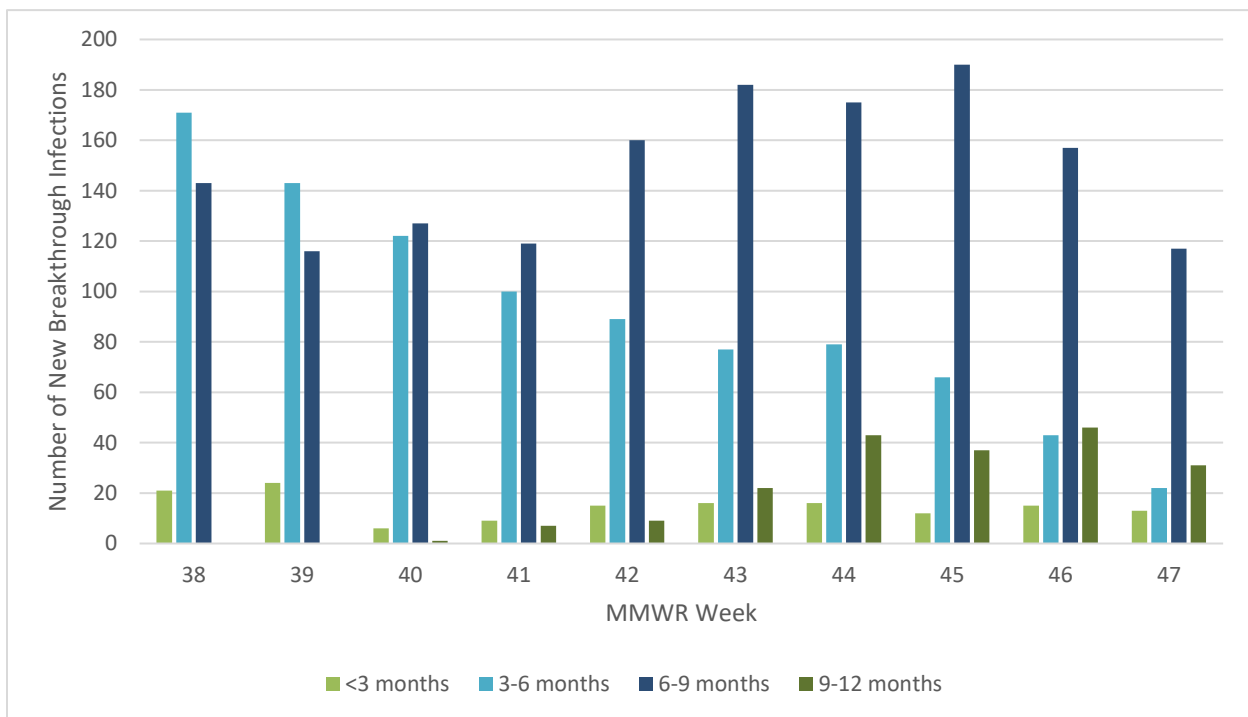
Figure 5. Percentage of Reported Cases Hospitalized by Vaccination Status and MMWR Week*, Washoe County, 2021



*Note: hospitalization totals for each week are subject to change as new reports are received on a daily basis and are often delayed, causing underreporting in more recent MMWR weeks.

- From MMWR week 38 through week 47, there was a higher percentage of hospitalized unvaccinated cases compared to vaccinated cases.
- In Washoe County, during MMWR week 38 through 47, the percent hospitalized hovered around 4% in unvaccinated cases with elevated percentages in weeks 42 and 43.
 - In MMWR week 42 and week 43, 4.9% and 6.5% of unvaccinated cases were hospitalized, respectively.
- From MMWR week 46 to week 47, the percentage of unvaccinated cases hospitalized decreased from 4.2% to 3.6%.
- From MMWR week 46 to week 47, the percentage of vaccinated cases hospitalized decreased from 1.7% to 1.1%.

Figure 6. Number of Breakthrough Infections by Duration from Last Dose of Vaccination to Infection by MMWR Week, Washoe County, 2021



- In MMWR week 45 through week 47, the number of breakthrough cases in individuals who were vaccinated 9-12 months prior to SARS-CoV-2 infection decreased after increasing from MMWR week 41, with a dip in week 44.

Vaccinations

Current dose and vaccination totals and percentages for Washoe County residents; data as of 11/28/2021.

128,962 doses reported as administered per 100,000 population (to date)

63,861 (63.86% of population) vaccinations reported as initiated per 100,000 population

56,720 (56.72% of population) vaccinations reported as completed per 100,000 population

68.11% of population 5 years and older initiated vaccination

60.50% of population 5 years and older completed vaccination

Figure 7. Percentage of Population Fully Vaccinated, Washoe County, 2021

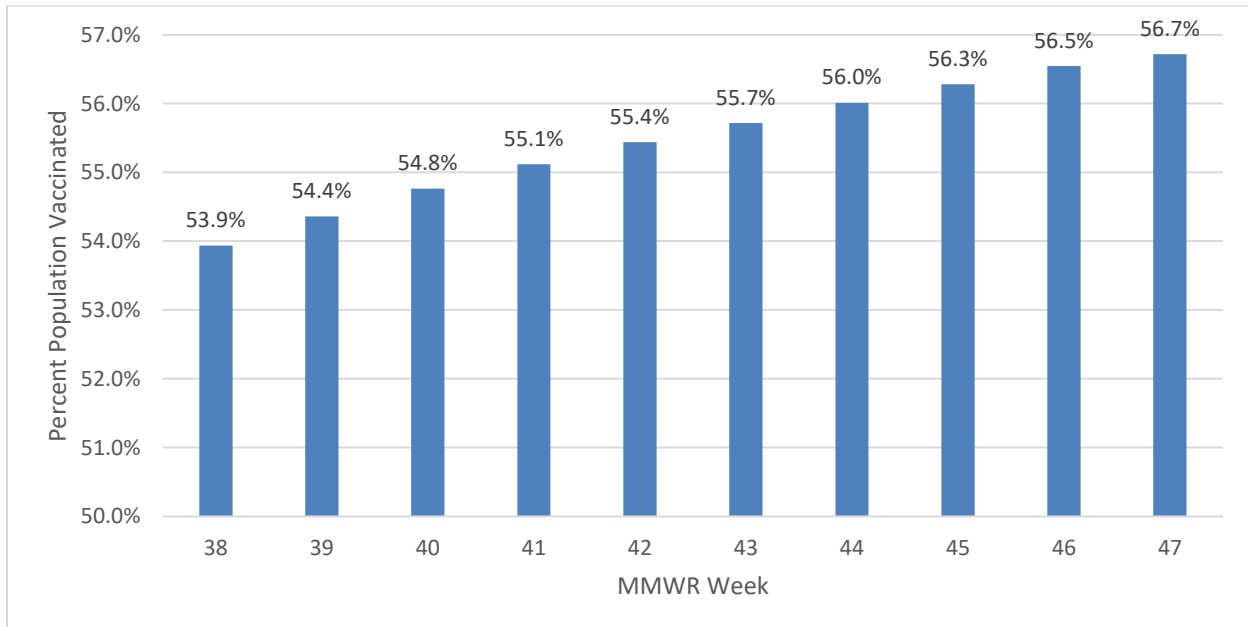


Table 5. Percentage of Population Vaccinated by Sex, Age Group, and Race/Ethnicity*, Washoe County, 2021

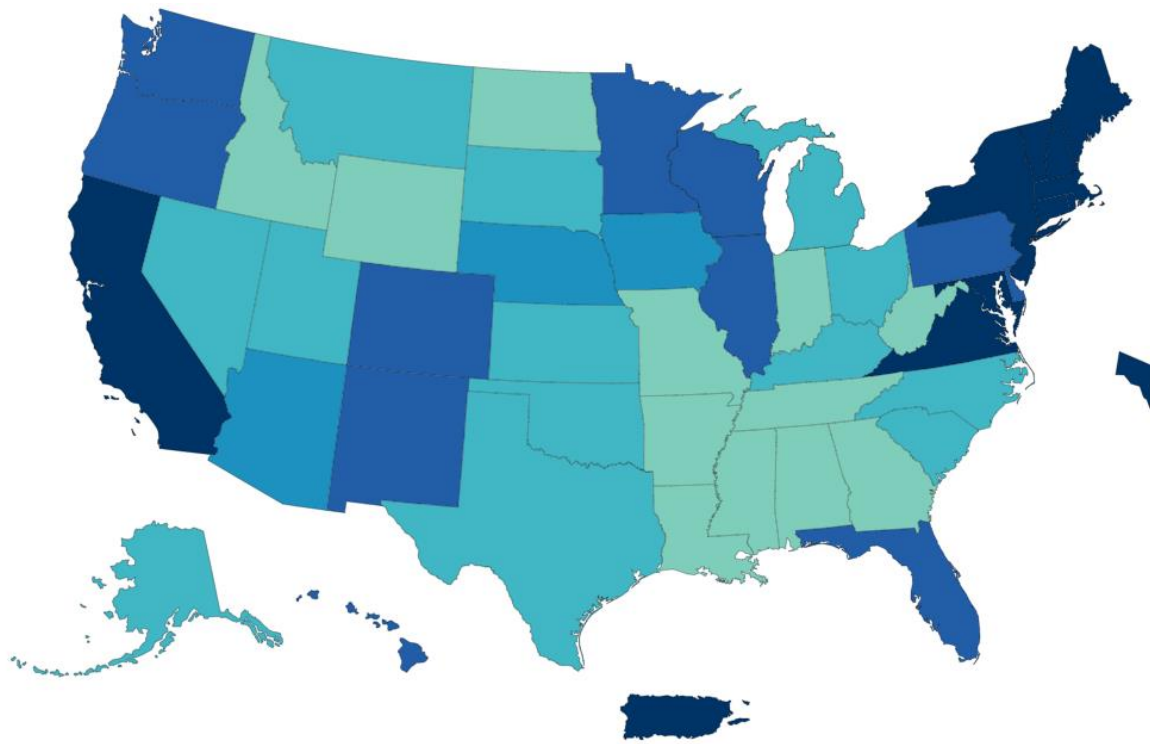
Select Demographics		% Population Vaccinated
Sex	Female	60.5%
	Male	54.4%
Age Group	0-17 years	16.7%
	18-29 years	58.8%
	30-49 years	63.6%
	50-64 years	75.4%
	65+ years	83.1%
Race / Ethnicity	American Indian/Alaska Native, non-Hispanic**	28.2%
	Asian/Native Hawaiian/Other Pacific Islander, non-Hispanic	42.4%
	Black, non-Hispanic	33.2%
	Hispanic	42.5%
	White, non-Hispanic	45.9%

*Note: 23.3% of the total vaccinated population were recorded as “Unknown” or “Other” and therefore population percentages are unable to be calculated for those categories.

**Note: Tribal populations may be underrepresented as data source does not include Indian Health Services (IHS) data, which may contain vaccination records for tribal members and those who access services through IHS clinics.

- In Washoe County, the 65+ age group has the highest percent vaccinated, with 83.1% of the 65+ population. Followed by the 50-64 age group with 75.4% of individuals vaccinated.
- In Washoe County, those who identify as White, non-Hispanic have the highest percent vaccinated (45.9%), followed by Hispanic (42.5%) and Asian/Native Hawaiian/Other Pacific Islander, non-Hispanic (42.4%).

Figure 8. Total COVID-19 Vaccine Doses Administered Reported to the CDC by State/Territory and for Select Federal Entities per 100,000 of the Total Population



Territories



Federal Entities



Data for Federal Entities are presented here and are also incorporated into the respective jurisdictional totals

Total Doses Administered per 100,000

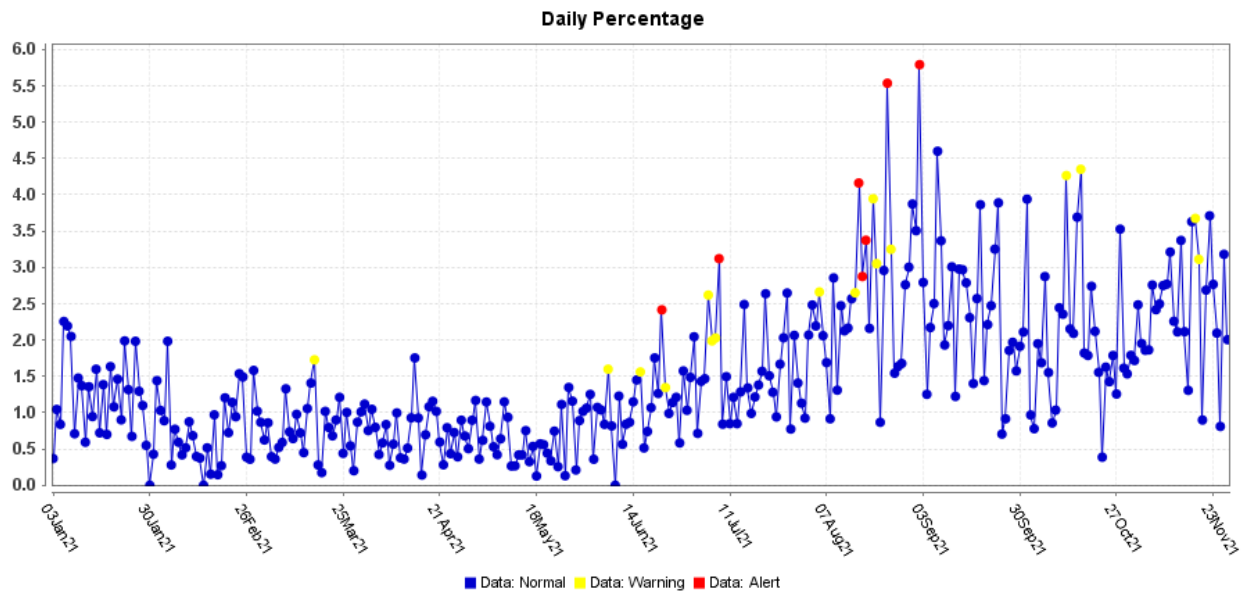


Data source for U.S. map for vaccination doses administered, as of 11/29/2021 6:00 AM ET. Posted: Monday, November 29, 2021, 6:06 PM ET, CDC COVID Data Tracker https://covid.cdc.gov/covid-data-tracker/#vaccinations_vacc-total-admin-rate-total

Surveillance Data

Percentage of persons indicating COVID-19 as the reason for visit to the Emergency Room (ER) is presented in Figure 9. The overlay below depicts COVID-19 in blue. Alerts appear as yellow and/or red dots. They indicate an unusually high percentage of COVID-19 visits according to ESSENCE algorithms.

Figure 9. Percentage of ER Visits Due to COVID through MMWR Week 47, 2021, Washoe County



Data source: ESSENCE

Glossary/Key Terms

COVID-19 Case

Coronavirus Disease 2019 (COVID-19) cases counted in this document are confirmed or probable cases as determined by meeting confirmatory laboratory evidence, clinical criteria, and/or epidemiologic linkage as defined on the CDC website here:

<https://ndc.services.cdc.gov/case-definitions/coronavirus-disease-2019-2021/>

COVID-19 Hospitalization

COVID-19 hospitalizations are counted as those hospitalized for greater than or equal to 24 hours and have a positive SARS-CoV-2 laboratory test.

COVID-19 Death

- Decedents with a positive PCR COVID-19 lab report (\leq 30 days from death or post-mortem)
- Decedents with a death certificate that lists a COVID-19-related term as a cause of death in Part I and have a history of a positive PCR COVID-19 lab report or

COVID-related terms include names for COVID-19, such as SARS-CoV-2, coronavirus, coronavirus-19, etc.

- Decedents with a pending cause of death that had a positive PCR lab test within 30 days of death AND symptoms indicative of COVID-19 (per investigation or medical report)
- Decedents with a death certificate that does not specifically list a COVID-19-related term that had a positive PCR lab result \leq 30 days before death and/or died within 30 days of COVID-19 symptom onset AND died in a manner of death deemed to be 'natural' on the death certificate

Exception: Deaths due to non-natural causes (e.g., accidental, intentional self-harm, homicide) should not be counted as a COVID-19 death even if the deceased had a confirmatory positive lab test within 30 days of death

Links

WCHD COVID Dashboard

<https://washoe.maps.arcgis.com/apps/dashboards/0db36fa8fa9c47758bc38210e4c23818>

WCHD website for COVID information and vaccine appointments

<https://www.washoecounty.gov/health/index.php?choice=bdr>

CDC COVID Data Tracker <https://covid.cdc.gov/covid-data-tracker/>

This COVID Report and others can be found at <https://covid19washoe.com/daily-updates/washoe-county-covid-19-data-report/>