

Division of Epidemiology & Public Health Preparedness (EHP) 775-328-2447

Adam Vazquez, MPH, COVID-19 Epidemiologist AVazquez@washoecounty.gov

Lissa Callahan, COVID-19 Statistician LCallahan@washoecounty.gov

Weekly Summary*

Metrics	Week 48	Week 49
Number of New Cases	710	631
New Cases per 100,000 Population	147	131
Breakthrough Cases	258	236
Hospitalizations**	28	35
Deaths**	9	13

- Completed Vaccination Total through 12/12/2021: 279,438 persons

*For definition and specifics on metrics summarized, please refer to corresponding sections.

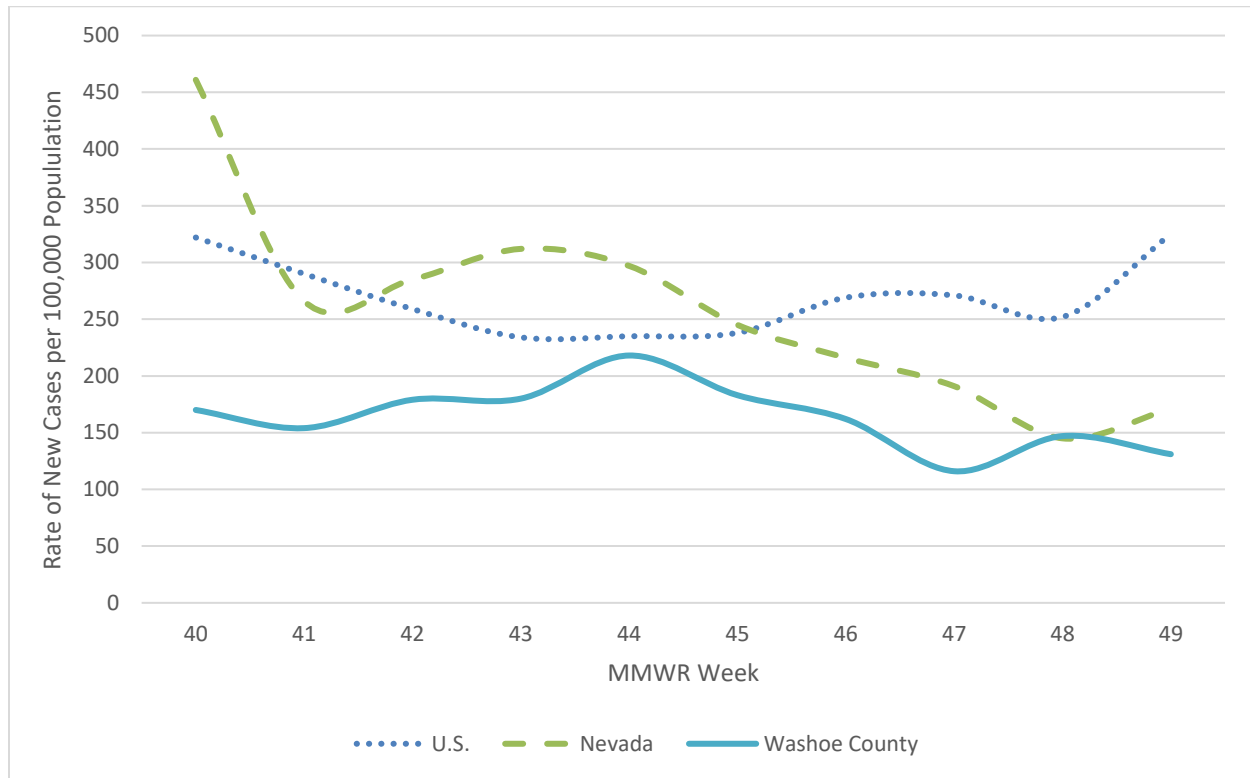
**Note: hospitalization and death totals for each week are subject to change as new reports are received on a daily basis and are often delayed, causing underreporting in more recent MMWR weeks.

Key message(s)

- The case rate per 100,000 population in Washoe County remain lower than the rate per 100,000 population in Nevada and the United States.
- On December 9, 2021, the Centers for Disease Control and Prevention (CDC) expanded the Pfizer COVID-19 vaccine booster recommendation to include all individuals ages 16 years and older following the expansion of Pfizer’s Emergency Use Authorization by the Food and Drug Administration (FDA).
 - https://dphh.nv.gov/Resources/Technical_Bulletins-New/
- Vaccination operations at the Washoe County Health District will be moving to the indoor clinic on December 20, 2021.

COVID-19 Case Information

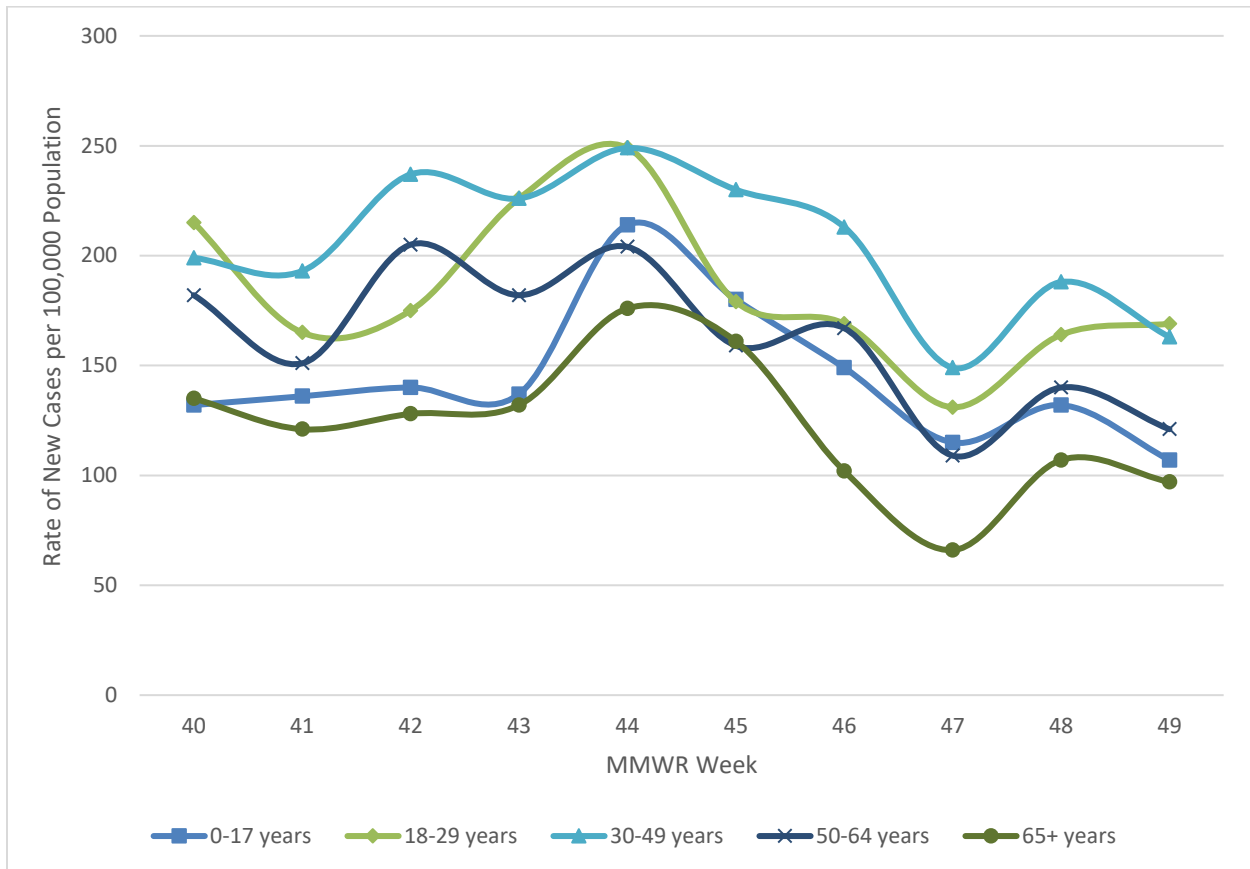
Figure 1. Rate of New Cases Reported by MMWR Week, Washoe County, Nevada, and the United States, 2021



Data source: <https://covid.cdc.gov/covid-data-tracker/#county-view>

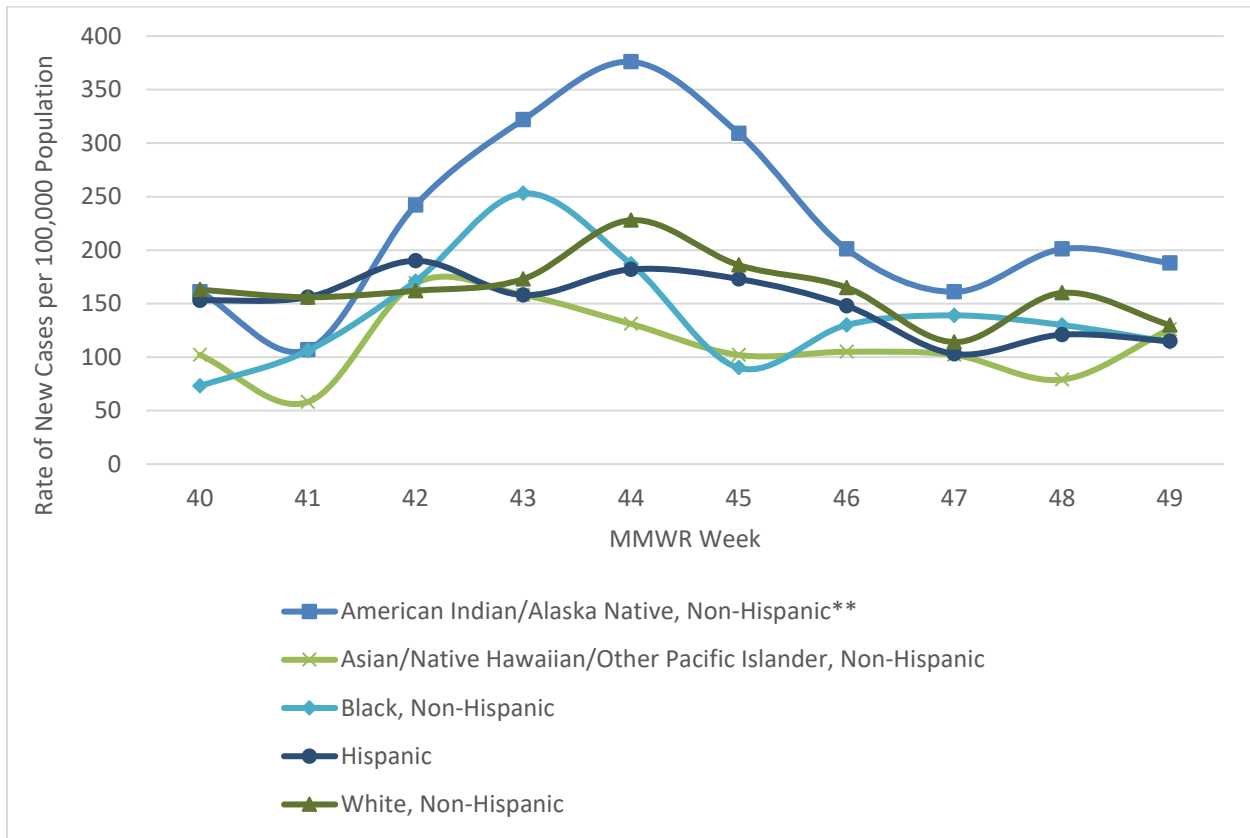
- In Washoe County, case counts decreased from MMWR week 48 to week 49 after a 10-week low in week 47 (116 cases per 100,000 population). During week 48 and week 49 there were 147 and 131 new cases per 100,000 population, respectively.
- In the state of Nevada, case counts decreased, overall, since MMWR week 43. However, during MMWR week 48 and week 49 there was an increase from 145 to 171 new cases per 100,000 population, respectively.
- In the United States, case counts increased. During MMWR week 48 and week 49 there were 252 and 325 new cases per 100,000 population, respectively.

Figure 2. Rate of New Cases Reported by Age Group and MMWR Week, Washoe County, 2021



- From MMWR week 41 through week 48 the age group with the highest rate of new cases reported per 100,000 population was among those aged 30-49 years.
- The age group with highest case rate per 100,000 population by the end of week 49 was the 18-29 age group with 169 new cases per 100,000 population. Followed by the 30-49 age group with 163 new cases per 100,000 population.
- The 65+ age group has remained the age group with the lowest number of new cases per 100,000 over the last 10 weeks.

Figure 3. Rate of New Cases Reported by Race/Ethnicity* and MMWR Week, Washoe County, 2021



*Note: From MMWR week 40 to week 49, 5.7% of cases were recorded as “Declined to answer”, “Multiple”, “Other”, or “Unknown” and rates per 100,000 population are unable to be calculated for those categories.

- From MMWR week 42 through 49, those who identified as American Indian/Alaska Native had the highest rate of new cases per 100,000 population.
- The rate of new cases per 100,000 in American Indian/Alaska Native peaked in week 44 with 376 cases per 100,000 population.

Hospitalizations, ICU Status, & Deaths

COVID-19 hospitalizations are defined as those hospitalized for greater than or equal to 24 hours and have a positive SARS-CoV-2 laboratory test.

COVID-19 deaths are defined as decedents who have had a positive PCR COVID-19 lab report \leq 30 days from death or post-mortem. This includes deaths attributed to COVID-19 related illnesses and, if not specifically listed on death certificate, a positive PCR COVID-19 lab, dependent on the manner of death. See full definition in Glossary/Key Terms at the end of the report.

Table 1. Number and Percent of New Cases Reported by Age and Hospitalization Status, MMWR Weeks* 48 and 49, Washoe County, 2021

			Age Group				
			0-17	18-29	30-49	50-64	65+
MMWR Week	48	Total Cases	142	132	230	122	84
		% Hospitalized	1.4%	1.5%	1.3%	4.1%	19.0%
	49	Total Cases	115	136	199	105	76
		% Hospitalized	0.9%	2.9%	3.5%	9.5%	17.1%

* Note: hospitalization totals for each week are subject to change as new reports are received on a daily basis and are often delayed, causing underreporting in more recent MMWR weeks.

- During MMWR week 48 and week 49 the age groups with the highest percentage of total cases resulting in hospitalization were those aged 50-64 and 65+ years of age.
- In Washoe County, during MMWR week 48 and week 49, 4.1% and 9.5% of the cases in the 50-64 age group were hospitalized, respectively.
- In Washoe County, during MMWR week 48 and week 49, 19.0% and 17.1% of the cases in the 65+ age group were hospitalized, respectively.

Table 2. Number and Percentage of Cases Reported by Hospitalization and ICU Status by MMWR Week*, Washoe County, 2021

MMWR Week	New Cases	Hospitalized		ICU	
		#	%	#	%
40	822	46	5.6	7	0.9
41	742	39	5.3	9	1.2
42	861	53	6.2	11	1.3
43	868	74	8.5	16	1.8
44	1,051	55	5.2	14	1.3
45	884	47	5.3	11	1.2
46	783	50	6.4	6	0.8
47	558	29	5.2	5	0.9
48	710	28	3.9	4	0.6
49	631	34	5.4	0	0.0

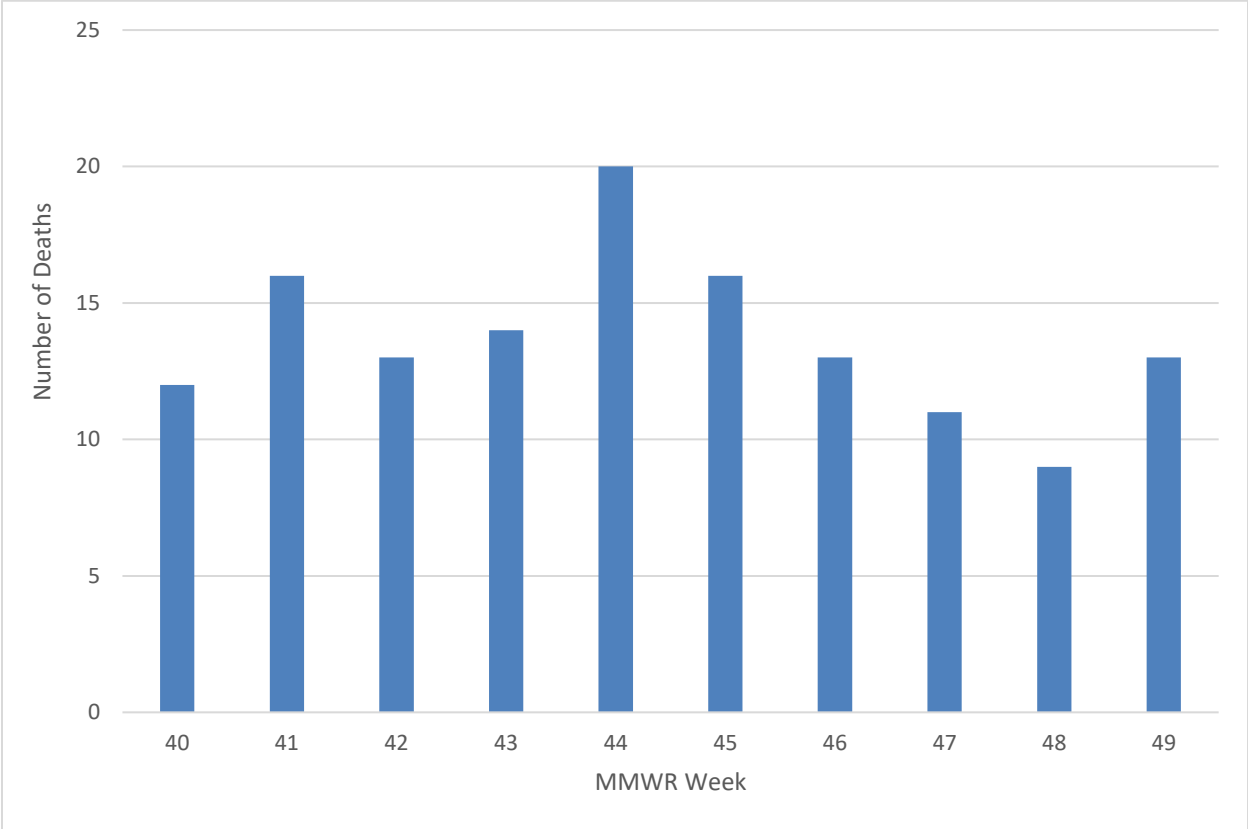
*Note: hospitalization and ICU totals for each week are subject to change as new reports are received on a daily basis and are often delayed, causing underreporting in more recent MMWR weeks.

Table 3. COVID-19 Deaths by Age Group and Month* of Death, Washoe County, 2021

Month	Total Deaths	Age Group				
		0-17	18-29	30-49	50-64	65+
January	108	0	0	7	15	86
February	39	0	0	0	4	35
March	13	0	0	2	4	7
April	7	0	0	1	2	4
May	10	0	1	2	2	5
June	5	0	0	1	1	3
July	7	0	0	2	2	3
August	68	0	1	11	14	42
September	98	0	1	8	33	56
October	64	0	0	9	18	37
November	57	0	2	6	13	36

*Note: death totals for each month are subject to change as new reports are received on a daily basis and are often delayed, causing underreporting in more recent months.

Figure 4. Number of Deaths Occurring by MMWR Week*, Washoe County, 2021



*Note: death totals for each week are subject to change as new reports are received on a daily basis and are often delayed, causing underreporting in more recent MMWR weeks.

Breakthrough Cases

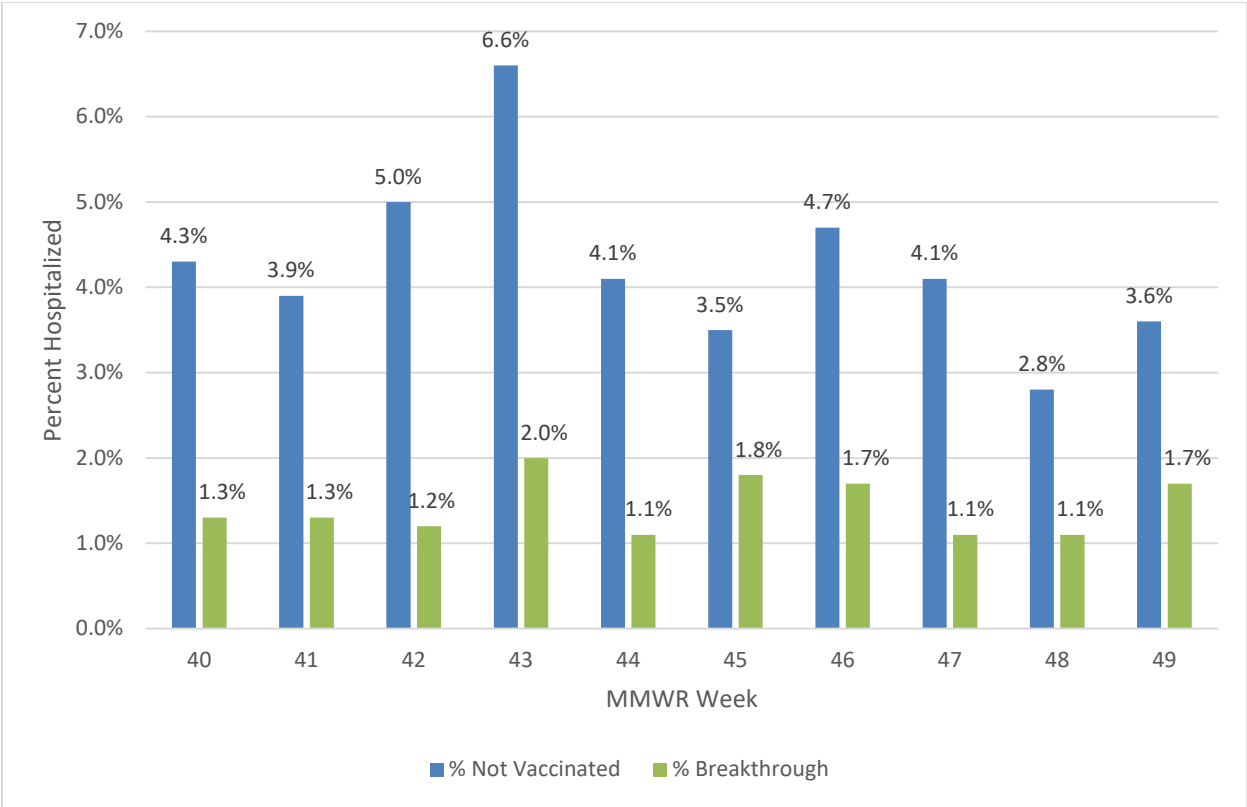
A breakthrough COVID-19 case is defined as a Washoe County resident who has SARS-CoV-2 PCR or antigen detected through laboratory testing 14 or more days after completing the primary series of an FDA-authorized COVID-19 vaccine.

Table 4. Number and Percentage of Cases Reporting Hospitalization and ICU by Vaccination Status and MMWR Week*, Washoe County, 2021

MMWR Week	All Cases			Unvaccinated				Breakthrough			
	New Cases	Total Hospitalized	Total ICU	Hospitalized		ICU		Hospitalized		ICU	
				#	%	#	%	#	%	#	%
40	822	46	7	35	4.3	5	0.6	11	1.3	2	0.2
41	742	39	9	29	3.9	8	1.1	10	1.3	1	0.1
42	861	53	11	43	5.0	10	1.2	10	1.2	1	0.1
43	868	74	16	57	6.6	12	1.4	17	2.0	4	0.5
44	1,051	55	14	43	4.1	11	1.0	12	1.1	3	0.3
45	884	47	11	31	3.5	9	1.0	16	1.8	2	0.2
46	783	50	6	37	4.7	5	0.6	13	1.7	1	0.1
47	558	29	5	23	4.1	5	0.9	6	1.1	0	0.0
48	710	28	4	20	2.8	3	0.4	8	1.1	1	0.1
49	631	34	0	23	3.6	0	0.0	11	1.7	0	0.0

*Note: hospitalization and ICU totals for each week are subject to change as new reports are received on a daily basis and are often delayed, causing underreporting in more recent MMWR weeks.

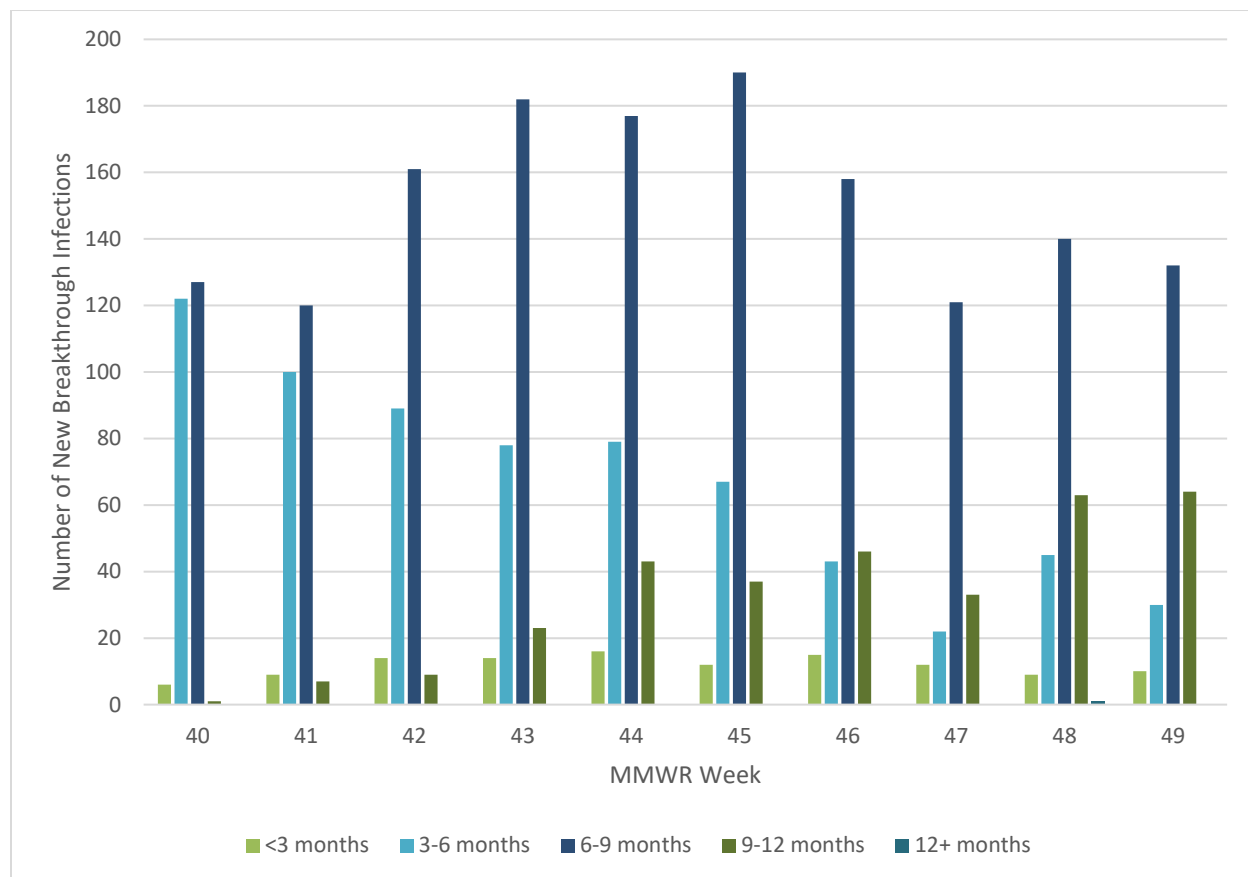
Figure 5. Percentage of Reported Cases Hospitalized by Vaccination Status and MMWR Week*, Washoe County, 2021



*Note: hospitalization totals for each week are subject to change as new reports are received on a daily basis and are often delayed, causing underreporting in more recent MMWR weeks.

- From MMWR week 40 through week 49, there was a higher percentage of hospitalized unvaccinated cases compared to vaccinated cases.
- In Washoe County, during MMWR week 40 through 49, the percent hospitalized remained around 4% in unvaccinated cases with elevated percentages in weeks 42 and 43.
 - In MMWR week 42 and week 43, 5.0% and 6.6% of unvaccinated cases were hospitalized, respectively.
- From MMWR week 46 to week 48, the percentage of unvaccinated cases hospitalized decreased from 4.7% to 2.8%.
- From MMWR week 48 to week 49, the percentage of vaccinated cases hospitalized increased from 1.1% to 1.7%.

Figure 6. Number of Breakthrough Infections by Duration from Last Dose of Vaccination to Infection by MMWR Week, Washoe County, 2021



- In MMWR week 45 through week 47, the number of breakthrough cases in individuals who were vaccinated 9-12 months prior to SARS-CoV-2 infection decreased after increasing from MMWR week 41, with a dip in week 44.
- In MMWR weeks 48 and 49, the number of new breakthrough infections in individuals who were vaccinated 3-6 months and 6-9 months prior to SARS-CoV-2 infection decreased.
 - Between weeks 48 and 49, the number of new breakthrough infections in individuals vaccinated 3-6 months prior to infection decreased from 45 to 40.
 - Between weeks 48 and 49, the number of new breakthrough infections in individuals vaccinated 6-9 months prior to infection decreased from 140 to 132.

Vaccinations

Current dose and vaccination totals and percentages for Washoe County residents; data through 12/12/2021.

134,944 doses reported as administered per 100,000 population (to date)

65,082 (65.1% of population) vaccinations reported as initiated per 100,000 population

57,957 (58.0% of population) vaccinations reported as completed per 100,000 population

70.3% of population 5 years and older initiated vaccination

62.6% of population 5 years and older completed vaccination

Figure 7. Percentage of Population Fully Vaccinated, Washoe County, 2021

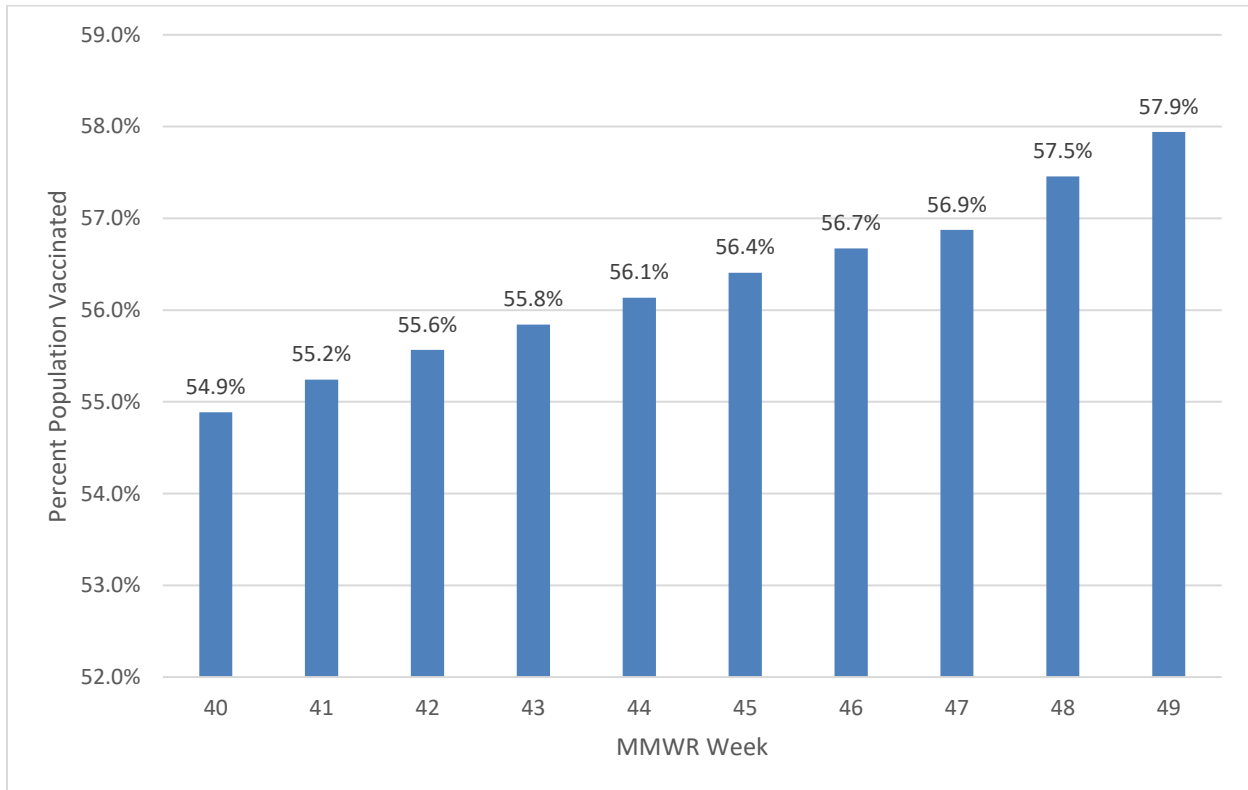


Table 5. Percentage of Population Vaccinated by Sex, Age Group, and Race/Ethnicity*, Washoe County, 2021

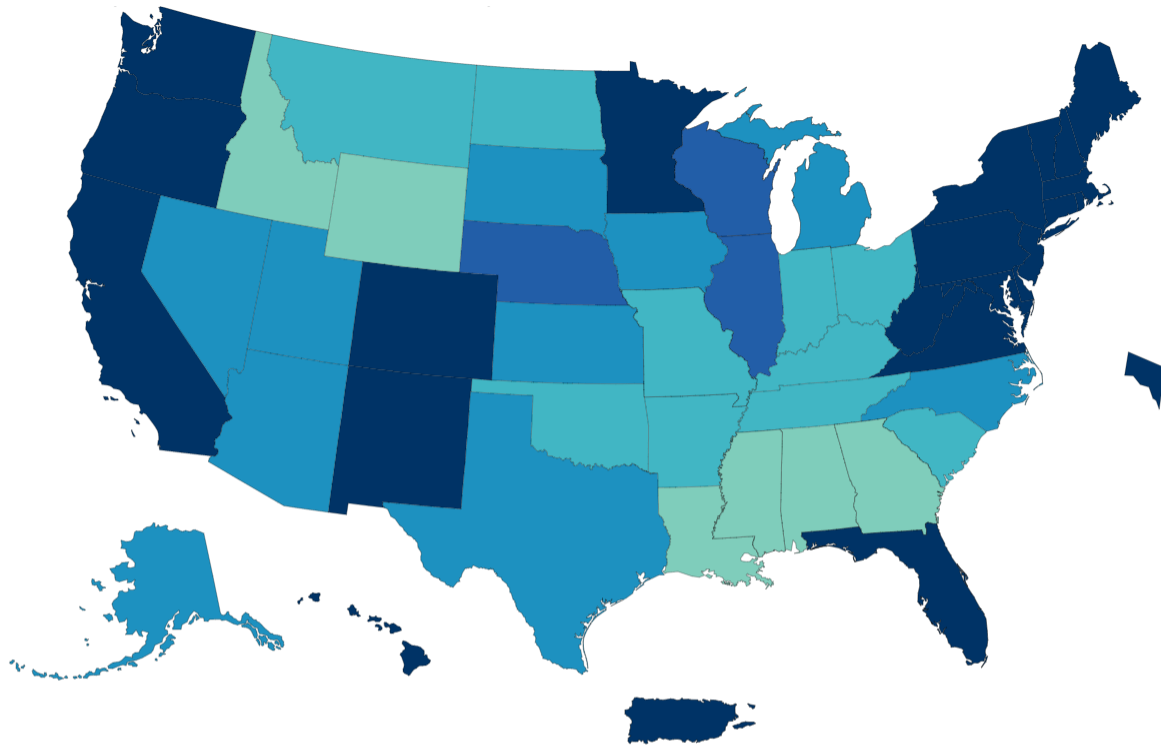
Select Demographics		% Population Vaccinated
Sex	Female	61.7%
	Male	55.6%
Age Group	0-17 years	19.8%
	18-29 years	59.7%
	30-49 years	64.3%
	50-64 years	76.1%
	65+ years	83.4%
Race / Ethnicity	American Indian/Alaska Native, Non-Hispanic**	28.8%
	Asian/Native Hawaiian/Other Pacific Islander, Non-Hispanic	43.1%
	Black, Non-Hispanic	33.7%
	Hispanic	43.6%
	White, Non-Hispanic	46.8%

*Note: 23.3% of the total vaccinated population were recorded as “Unknown” or “Other” and therefore population percentages are unable to be calculated for those categories. Additionally, 1.3% of the total Washoe County population had missing demographic information and therefore were not included in the overall calculations.

**Note: Tribal populations may be underrepresented as data source does not include Indian Health Services (IHS) data, which may contain vaccination records for tribal members and those who access services through IHS clinics.

- In Washoe County, the 65+ age group has the highest percent vaccinated, with 83.4% of the 65+ population. Followed by the 50-64 age group with 76.1% of individuals vaccinated.
- In Washoe County, those who identify as White, non-Hispanic have the highest percent vaccinated (46.8%), followed by Hispanic (43.6%) and Asian/Native Hawaiian/Other Pacific Islander, non-Hispanic (43.1%).

Figure 8. Total COVID-19 Vaccine Doses Administered Reported to the CDC by State/Territory and for Select Federal Entities per 100,000 of the Total Population



Territories



Federal Entities



Data for Federal Entities are presented here and are also incorporated into the respective jurisdictional totals

Total Doses Administered per 100,000

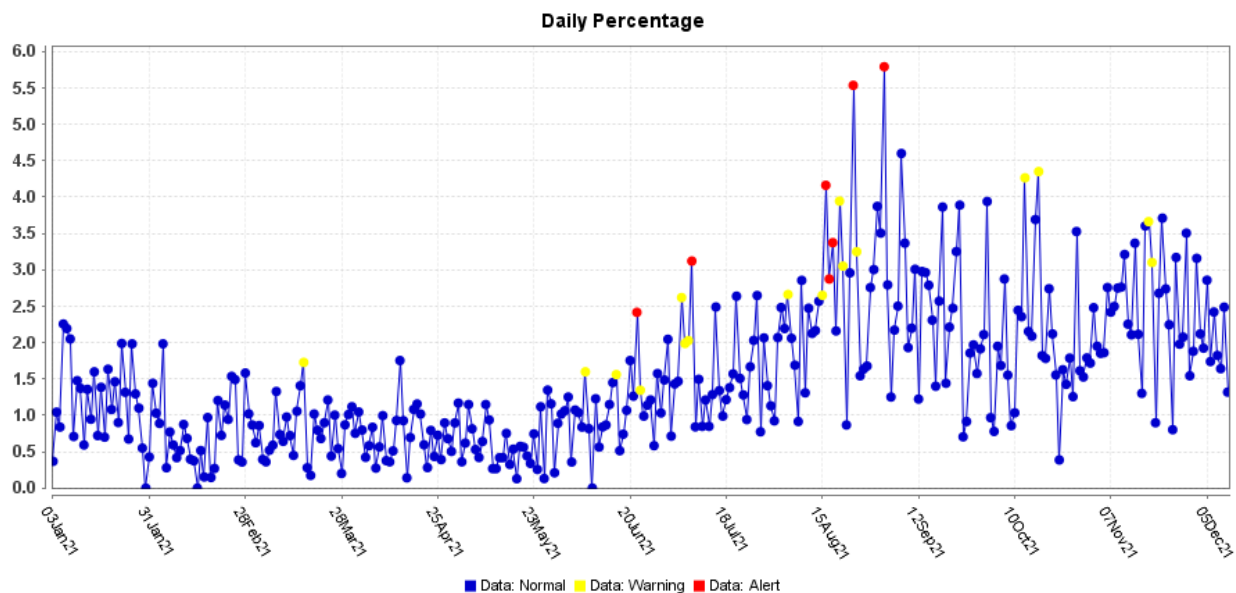


Data source for U.S. map for vaccination doses administered, as of 12/13/2021 6:00 AM ET. Posted: Monday, 12/13/2021, 4:47 PM ET, CDC COVID Data Tracker https://covid.cdc.gov/covid-data-tracker/#vaccinations_vacc-total-admin-rate-total

Surveillance Data

Percentage of persons indicating COVID-19 as the reason for visit to the Emergency Room (ER) is presented in Figure 9. The overlay below depicts COVID-19 in blue. Alerts appear as yellow and/or red dots. They indicate an unusually high percentage of COVID-19 visits according to ESSENCE algorithms.

Figure 9. Percentage of ER Visits Due to COVID through MMWR Week 49, 2021, Washoe County



Data source: ESSENCE

Glossary/Key Terms

COVID-19 Case

Coronavirus Disease 2019 (COVID-19) cases counted in this document are confirmed or probable cases as determined by meeting confirmatory laboratory evidence, clinical criteria, and/or epidemiologic linkage as defined on the CDC website here:

<https://ndc.services.cdc.gov/case-definitions/coronavirus-disease-2019-2021/>

COVID-19 Hospitalization

COVID-19 hospitalizations are counted as those hospitalized for greater than or equal to 24 hours and have a positive SARS-CoV-2 laboratory test.

COVID-19 Death

- Decedents with a positive PCR COVID-19 lab report (≤ 30 days from death or post-mortem)
- Decedents with a death certificate that lists a COVID-19-related term as a cause of death in Part I and have a history of a positive PCR COVID-19 lab report or

COVID-related terms include names for COVID-19, such as SARS-CoV-2, coronavirus, coronavirus-19, etc.

- Decedents with a pending cause of death that had a positive PCR lab test within 30 days of death AND symptoms indicative of COVID-19 (per investigation or medical report)
- Decedents with a death certificate that does not specifically list a COVID-19-related term that had a positive PCR lab result \leq 30 days before death and/or died within 30 days of COVID-19 symptom onset AND died in a manner of death deemed to be 'natural' on the death certificate

Exception: Deaths due to non-natural causes (e.g., accidental, intentional self-harm, homicide) should not be counted as a COVID-19 death even if the deceased had a confirmatory positive lab test within 30 days of death

Links

WCHD COVID Dashboard

<https://washoe.maps.arcgis.com/apps/dashboards/0db36fa8fa9c47758bc38210e4c23818>

WCHD website for COVID information and vaccine appointments

<https://www.washoecounty.gov/health/index.php?choice=bdr>

CDC COVID Data Tracker <https://covid.cdc.gov/covid-data-tracker/>

This COVID Report and others can be found at <https://covid19washoe.com/daily-updates/washoe-county-covid-19-data-report/>