

COVID-19 Epidemiology Surveillance Program
MMWR Week #2 – 3, Jan. 9 – Jan. 22, 2022

Division of Epidemiology & Public Health Preparedness (EHPH) 775-328-2447

Adam Vazquez, MPH, COVID-19 Epidemiologist AVazquez@washoecounty.gov

Lissa Callahan, COVID-19 Statistician LCallahan@washoecounty.gov

Weekly Summary*

Metrics	Week 2	Week 3
Number of New Cases	6,133	8,139
New Cases per 100,000 Population	1,272	1,688
Number of New Breakthrough Cases	1,854	1,322
Hospitalizations**	78	111
Deaths**	3	13

- Completed Vaccination Total through 01/22/2022: 289,225 persons

*For definition and specifics on metrics summarized, please refer to corresponding sections.

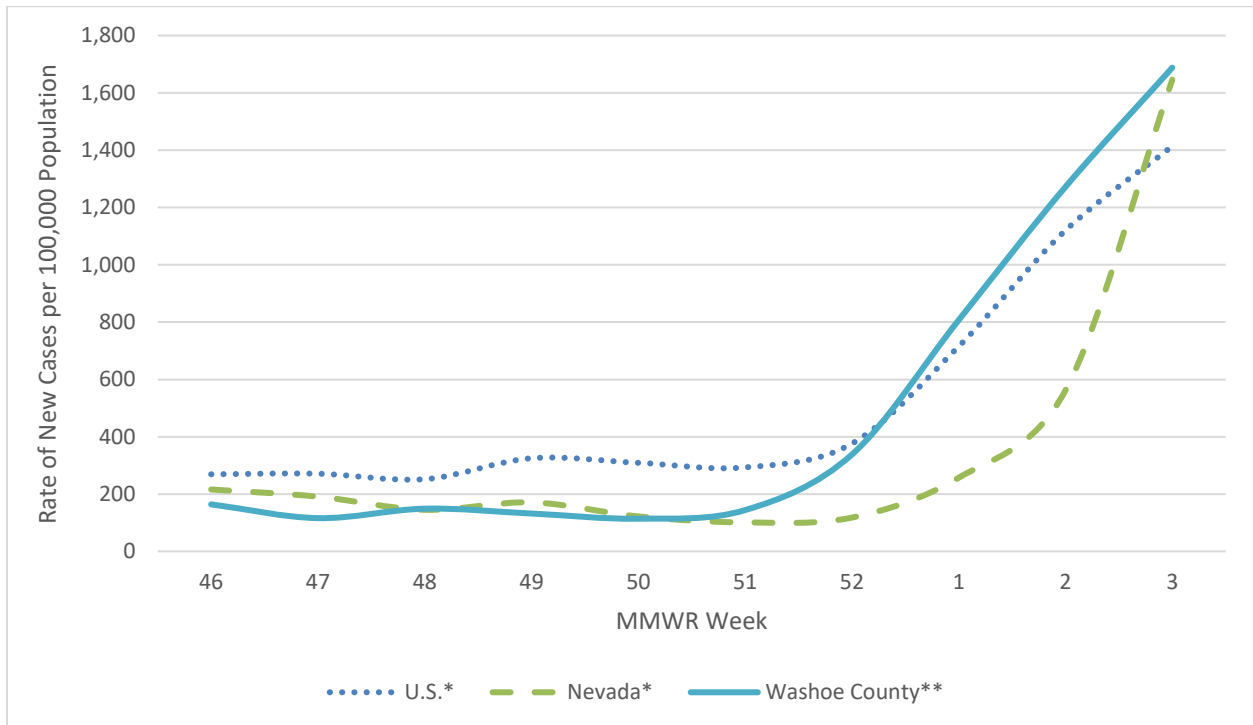
**Note: hospitalization and death totals for each week are subject to change as new reports are received on a daily basis and are often delayed, causing underreporting in more recent MMWR weeks.

Key message(s)

- The numbers in this report are indicating the impact of the Omicron surge on the case counts across the community. The surge we are noting in this report has been observed in jurisdictions around the world.
- Table 6 was added to display the percentage of the total population vaccinated and boosted in Washoe County, Nevada, and the United States.
- Figure 8 and Figure 9 were added to display the percentage of people fully vaccinated and boosted across State/Territories and Federal entities in the U.S. These two maps replaced the “Total Doses Administered Reported” map from previous reports.

COVID-19 Case Information

Figure 1. Rate of New Cases Reported by MMWR Week, Washoe County, Nevada, and the United States, 2021-2022

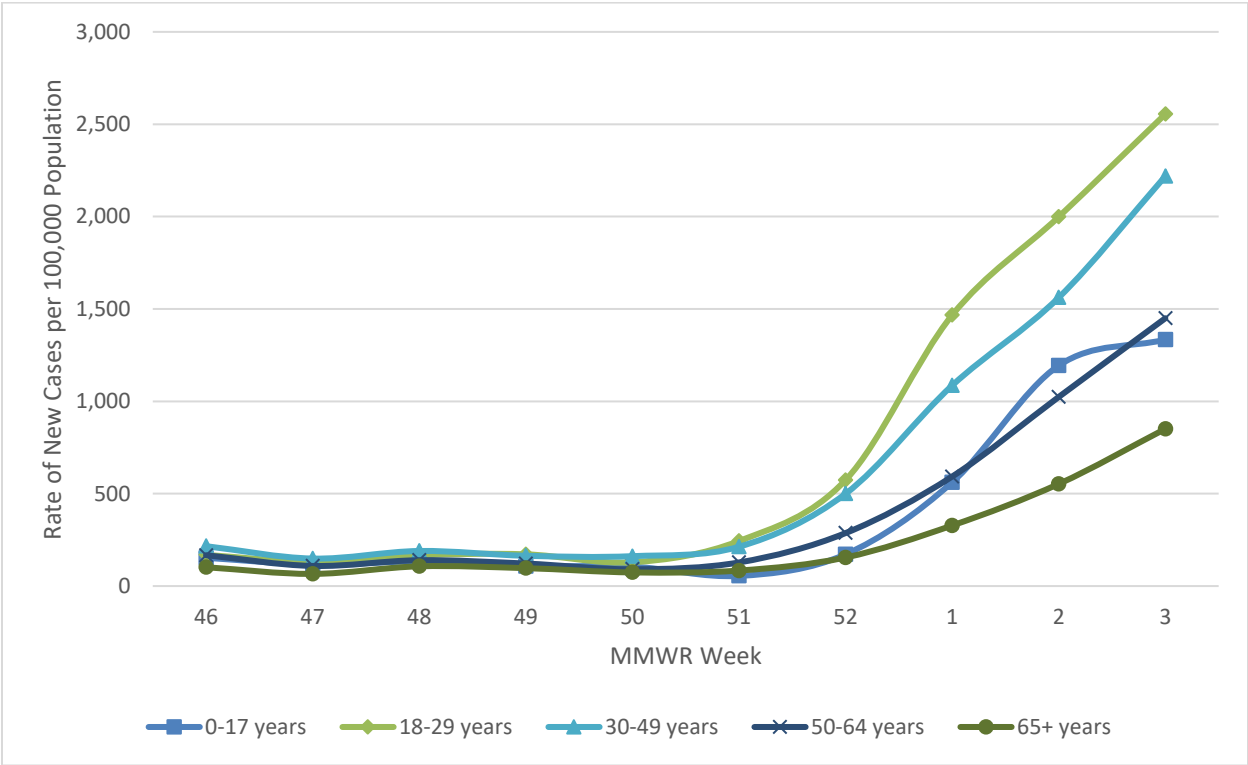


*Data source: <https://data.cdc.gov/Public-Health-Surveillance/United-States-COVID-19-County-Level-of-Community-T/8396-v7yb>

** Data source: Internal, WCHD

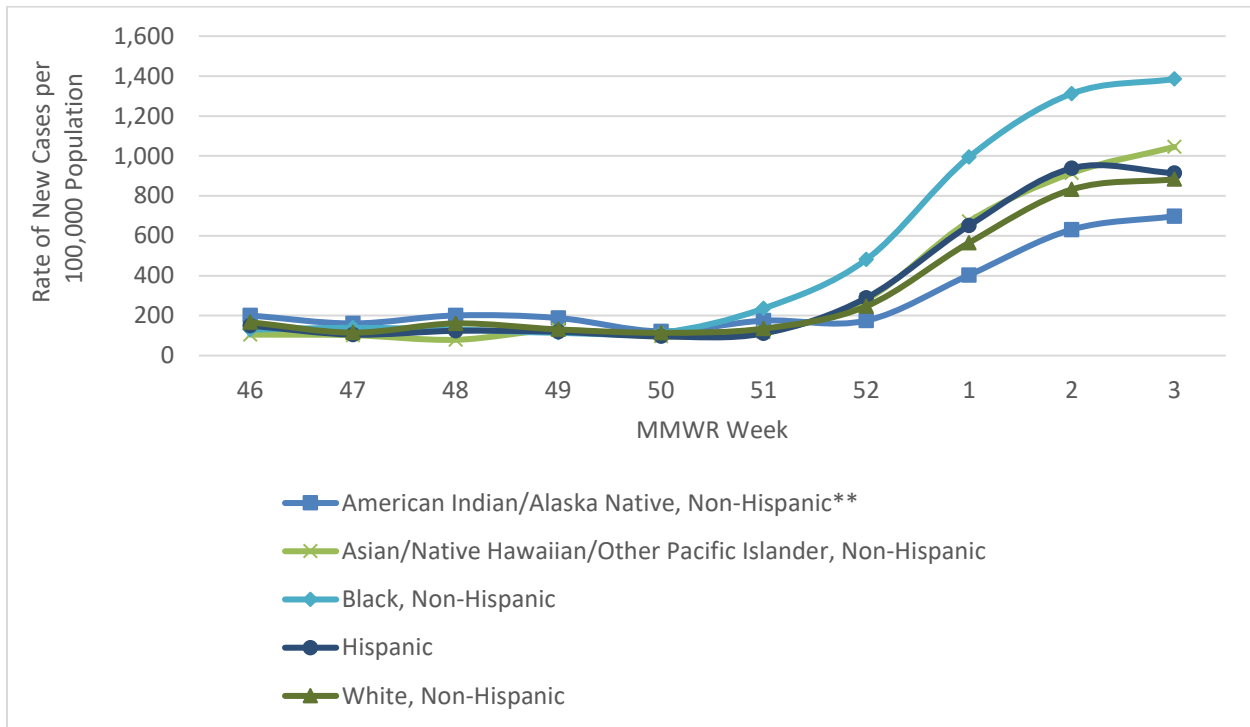
- In Washoe County, case counts increased in MMWR weeks 2 and 3. During MMWR week 51 there were 144 new cases per 100,000 population. Case counts increased to 1,272 and 1,688 new cases per 100,000 population in MMWR week 2 and week 3, respectively
- In Nevada, case counts increased to 562 new cases per 100,000 population in MMWR week 2 and 1,646 new cases per 100,000 population in MMWR week 3.
- In the United States, case counts also increased. During MMWR week 2 and week 3 there were 1,120 and 1,414 new cases per 100,000 population, respectively, which rose from 715 new cases per 100,000 population in week 1.

Figure 2. Rate of New Cases Reported by Age Group and MMWR Week, Washoe County, 2021-2022



- From MMWR week 51 through week 3, there was an increase in cases per 100,000 population across all age groups.
- The age group with highest case rate per 100,000 population during week 3 was the 18-29 age group with 2,555 new cases per 100,000 population. Followed by the 30-49 age group with 2,219 new cases per 100,000 population.
- The 65+ age group had the lowest number of new cases per 100,000 during week 3 with 851, which increased from 84 new cases per 100,000 in week 51.

Figure 3. Rate of New Cases Reported by Race/Ethnicity* and MMWR Week, Washoe County, 2021-2022



*Note: From MMWR week 46 to week 3, 31.1% of cases were recorded as “Declined to answer”, “Multiple”, “Other”, “Not Asked”, or “Unknown” and rates per 100,000 population are unable to be calculated for those categories.

**Note: Tribal populations may be underrepresented as data source does not include Indian Health Services (IHS) data, which may contain vaccination records for tribal members and those who access services through IHS clinics.

- From MMWR week 46 through 50, those who identified as American Indian/Alaska Native had the highest rate of new cases per 100,000 population.
- The rate of new cases per 100,000 in American Indian/Alaska Native was highest in weeks 46 and 48, each with 201 cases per 100,000 population.
- However, in weeks 51 through 3, those who identified as Black, Non-Hispanic had the highest rate of new cases per 100,000 population.
- In MMWR week 2 and 3, those who identified as Black, Non-Hispanic had 1,312 and 1,385 new cases per 100,000 population, respectively.

Hospitalizations, ICU Status, & Deaths

COVID-19 hospitalizations are defined as those hospitalized for greater than or equal to 24 hours and have a positive SARS-CoV-2 laboratory test.

COVID-19 deaths are defined as decedents who have had a positive PCR COVID-19 lab report \leq 30 days from death or post-mortem. This includes deaths attributed to COVID-19 related illnesses and, if not specifically listed on death certificate, a positive PCR COVID-19 lab, dependent on the manner of death. See full definition in Glossary/Key Terms at the end of the report.

Table 1. Number and Percent of New Cases Reported by Age and Hospitalization Status, MMWR Weeks* 2 and 3, Washoe County, 2021-2022

			Age Group				
			0-17	18-29	30-49	50-64	65+
MMWR Week	2	Total Cases	1,288	1,608	1,911	891	433
		% Hospitalized	0.5%	0.4%	1.0%	2.4%	5.8%
	3	Total Cases	1,439	2,055	2,715	1,261	666
		% Hospitalized	1.1%	0.6%	0.8%	1.4%	6.6%

* Note: hospitalization totals for each week are subject to change as new reports are received on a daily basis and are often delayed, causing underreporting in more recent MMWR weeks.

- During MMWR week 2 and week 3 the age groups with the highest percentage of total cases resulting in hospitalization were those aged 50-64 and 65+ years of age.
- In Washoe County, during MMWR week 2 and week 3, 2.4% and 1.4% of the cases in the 50-64 age group were hospitalized, respectively.
- In Washoe County, during MMWR week 2 and week 3, 5.8% and 6.6% of the cases in the 65+ age group were hospitalized, respectively.

Table 2. Number and Percentage of Cases Reported by Hospitalization and ICU Status by MMWR Week*, Washoe County, 2021-2022

MMWR Week	New Cases	Hospitalized		ICU	
		#	%	#	%
46	790	50	6.3	7	0.9
47	560	30	5.4	6	1.1
48	716	29	4.1	6	0.8
49	638	40	6.3	5	0.8
50	552	22	4.0	3	0.5
51	692	26	3.8	6	0.9
52	1,632	42	2.6	3	0.2
1	3,889	65	1.7	8	0.2
2	6,133	78	1.3	15	0.2
3	8,139	111	1.4	16	0.2

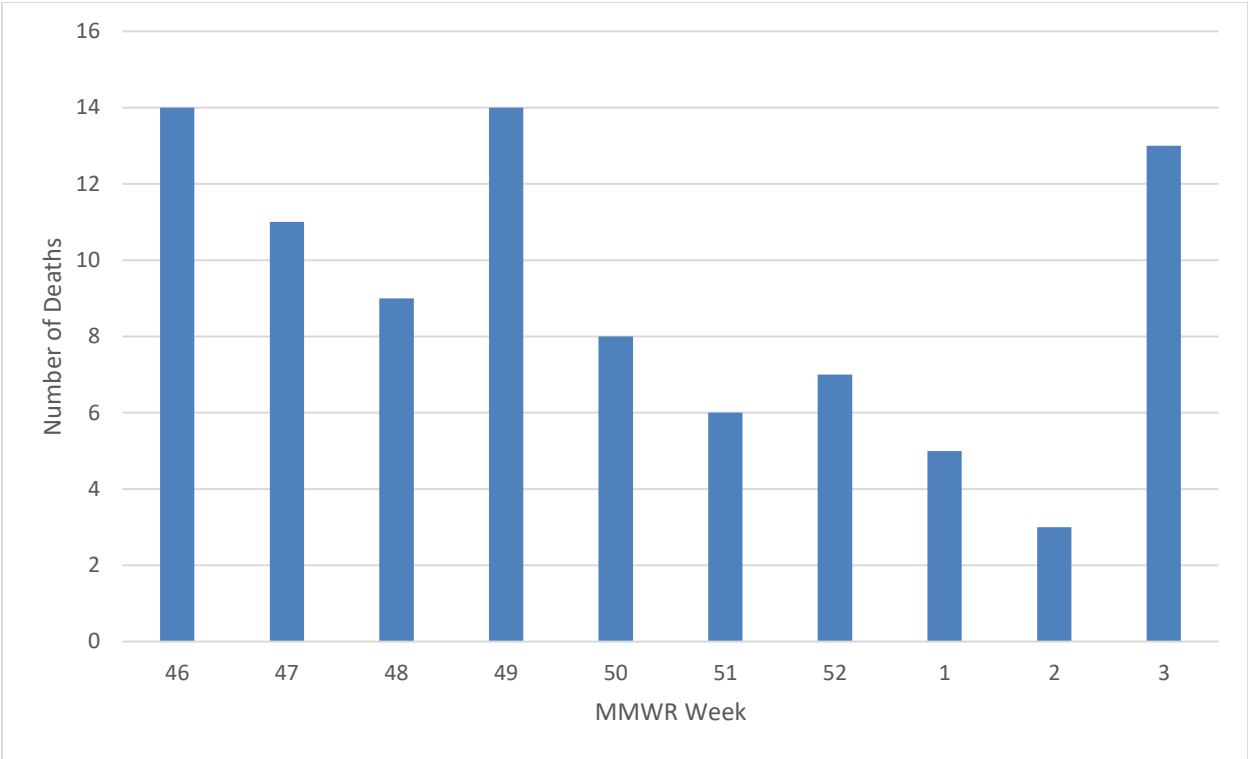
*Note: hospitalization and ICU totals for each week are subject to change as new reports are received on a daily basis and are often delayed, causing underreporting in more recent MMWR weeks.

Table 3. COVID-19 Deaths by Age Group and Month* of Death, Washoe County, 2021

Month	Total Deaths	Age Group				
		0-17	18-29	30-49	50-64	65+
January	108	0	0	7	15	86
February	39	0	0	0	4	35
March	14	0	0	2	4	8
April	7	0	0	1	2	4
May	10	0	1	2	2	5
June	5	0	0	1	1	3
July	7	0	0	2	2	3
August	68	0	1	11	14	42
September	99	0	1	8	33	57
October	66	0	0	10	18	38
November	58	0	2	6	13	37
December	38	0	0	7	11	20

*Note: death totals for each month are subject to change as new reports are received on a daily basis and are often delayed, causing underreporting in more recent months.

Figure 4. Number of Deaths Occurring by MMWR Week*, Washoe County, 2021-2022



*Note: death totals for each week are subject to change as new reports are received on a daily basis and are often delayed, causing underreporting in more recent MMWR weeks.

Breakthrough Cases

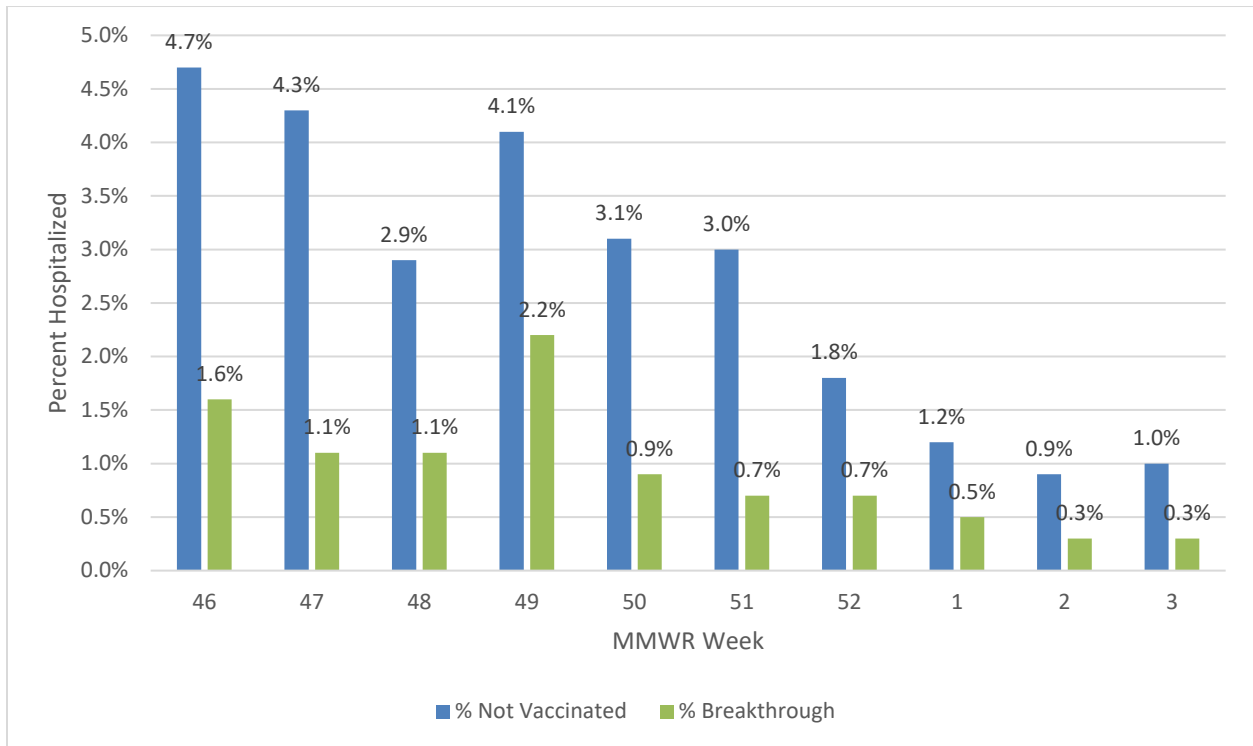
A breakthrough COVID-19 case is defined as a Washoe County resident who has SARS-CoV-2 PCR or antigen detected through laboratory testing 14 or more days after completing the primary series of an FDA-authorized COVID-19 vaccine.

Table 4. Number and Percentage of Cases Reporting Hospitalization and ICU by Vaccination Status and MMWR Week*, Washoe County, 2021-2022

MMWR Week	All Cases			Unvaccinated Cases				Breakthrough Cases			
	New Cases	Total Hospitalized	Total ICU	Hospitalized		ICU		Hospitalized		ICU	
				#	%	#	%	#	%	#	%
46	790	50	7	37	4.7	6	0.8	13	1.6	1	0.1
47	560	30	6	24	4.3	6	1.1	6	1.1	0	0.0
48	716	29	6	21	2.9	5	0.7	8	1.1	1	0.1
49	638	40	5	26	4.1	4	0.6	14	2.2	1	0.2
50	552	22	3	17	3.1	3	0.5	5	0.9	0	0.0
51	692	26	6	21	3.0	5	0.7	5	0.7	1	0.1
52	1,632	42	3	30	1.8	3	0.2	12	0.7	0	0.0
1	3,889	65	8	46	1.2	6	0.2	19	0.5	2	0.1
2	6,133	78	15	57	0.9	12	0.2	21	0.3	3	0.0
3	8,139	111	16	85	1.0	12	0.1	26	0.3	4	0.0

*Note: hospitalization and ICU totals for each week are subject to change as new reports are received on a daily basis and are often delayed, causing underreporting in more recent MMWR weeks.

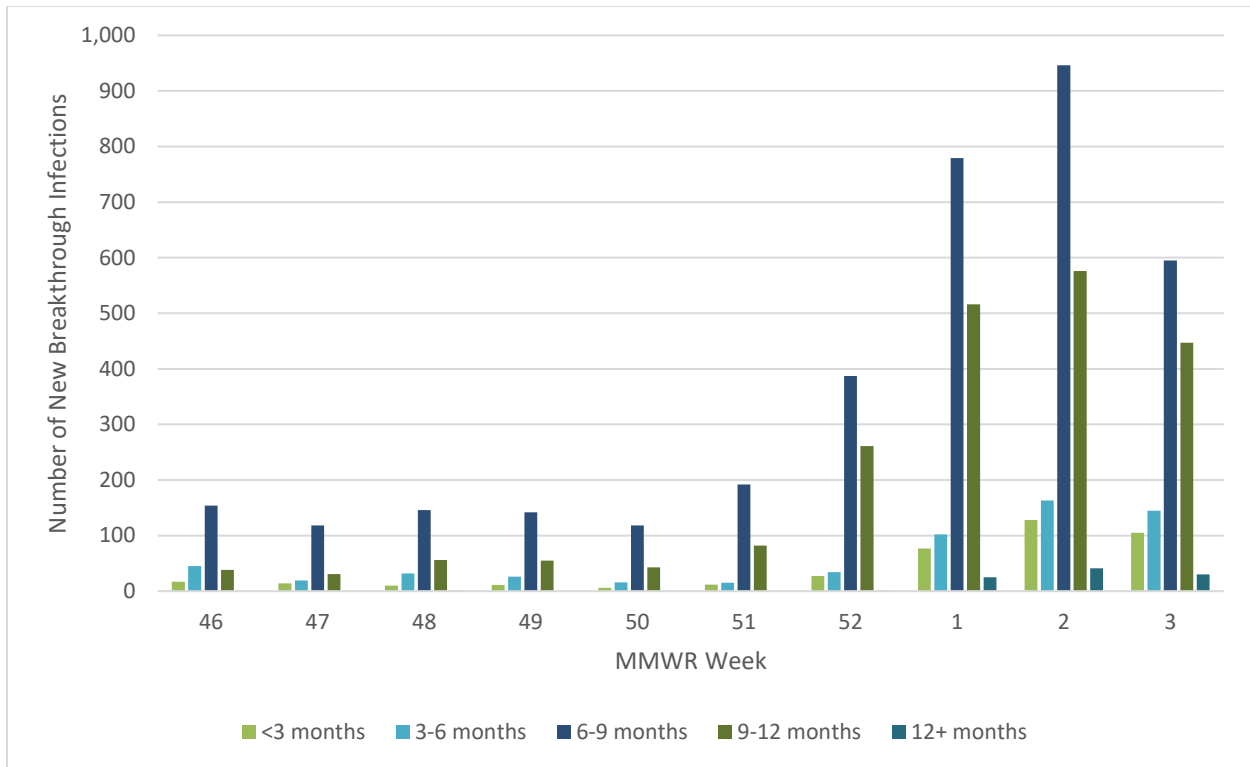
Figure 5. Percentage of Reported Cases Hospitalized by Vaccination Status and MMWR Week*, Washoe County, 2021-2022



*Note: hospitalization totals for each week are subject to change as new reports are received on a daily basis and are often delayed, causing underreporting in more recent MMWR weeks.

- From MMWR week 46 through week 3, there was a higher percentage of hospitalized unvaccinated cases compared to vaccinated cases.
- This trend has remained consistent for the duration of this report publication.

Figure 6. Number of Breakthrough Infections by Duration from Last Dose of Vaccination to Infection by MMWR Week*, Washoe County, 2021-2022



*Note: vaccination data for each week are subject to change as vaccinations are updated on a daily basis and are often on a delay internally, causing underreporting in more recent MMWR weeks.

- From MMWR week 50 to week 2, all groups had increased numbers of breakthrough cases.
- The number of new breakthrough cases among individuals who were vaccinated 6-9 months prior to SARS-CoV-2 infection was consistently the highest out of all the groups assessed with a 10-week high in week 2.
- From MMWR week 50 to week 2, the number of new breakthrough infections in individuals who were vaccinated 6-9 months prior to SARS-CoV-2 infection increased from 118 to 946 new cases.
- From MMWR week 50 to week 2, the number of new breakthrough infections in individuals who were vaccinated 9-12 months prior to SARS-CoV-2 infection increased from 43 to 576 new cases.
- The number of breakthrough cases in individuals who were vaccinated < 3 months prior to SARS-CoV-2 infection remains low compared to other groups, however by the end of MMWR week 3 increased to 30 new cases.

Vaccinations

Current dose and vaccination totals and percentages for Washoe County residents; data as of 01/24/2022.

148,117 doses reported as administered per 100,000 population (to date)

68,219 (68.2% of population) vaccinations reported as **initiated** per 100,000 population

59,987 (60.0% of population) vaccinations reported as **completed** per 100,000 population

73.7% of population 5 years and older **initiated** vaccination

64.8% of population 5 years and older **completed** vaccination

Figure 7. Percentage of Population Fully Vaccinated, Washoe County, 2021-2022

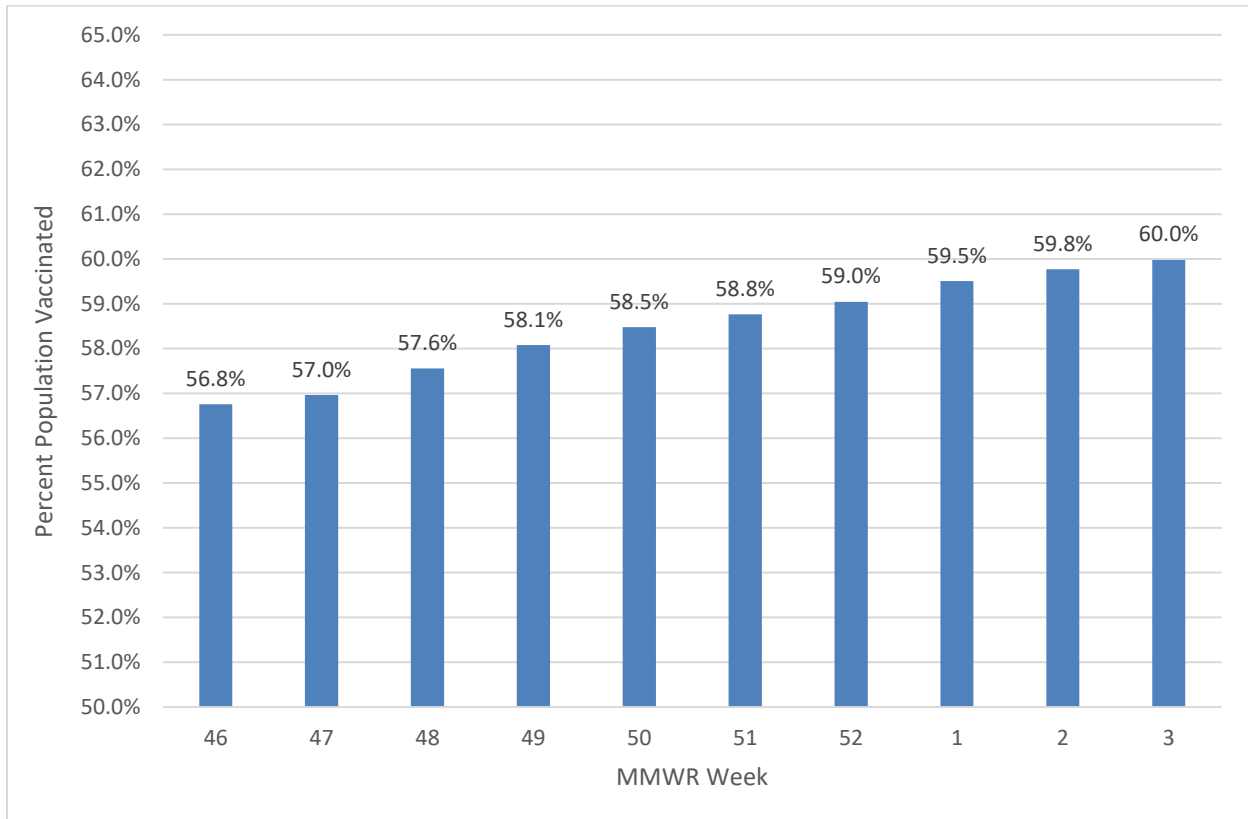


Table 5. Percentage of Population Vaccinated by Sex, Age Group, and Race/Ethnicity*, Washoe County, 2021-2022

Select Demographics		% Population Fully Vaccinated
Sex	Female	63.7%
	Male	57.7%
Age Group	0-17 years	24.5%
	18-29 years	61.3%
	30-49 years	65.8%
	50-64 years	77.4%
	65+ years	84.0%
Race / Ethnicity*	American Indian/Alaska Native, Non-Hispanic**	30.2%
	Asian/Native Hawaiian/Other Pacific Islander, Non-Hispanic	44.2%
	Black, Non-Hispanic	34.8%
	Hispanic	46.2%
	White, Non-Hispanic	48.1%

*Note: 23.2% of the total vaccinated population were recorded as “Unknown” or “Other” and therefore population percentages are unable to be calculated for those categories. Additionally, 1.3% of the total Washoe County population had missing demographic information and therefore were not included in the overall calculations.

**Note: Tribal populations may be underrepresented as data source does not include Indian Health Services (IHS) data, which may contain vaccination records for tribal members and those who access services through IHS clinics.

- In Washoe County, the 65+ age group has the highest percent vaccinated, with 84.0% of the 65+ population, followed by the 50-64 age group with 77.4% of individuals vaccinated.
- In Washoe County, those who identify as White, non-Hispanic have the highest percent vaccinated (48.1%), followed by Hispanic (46.2%) and Asian/Native Hawaiian/Other Pacific Islander, non-Hispanic (44.2%).

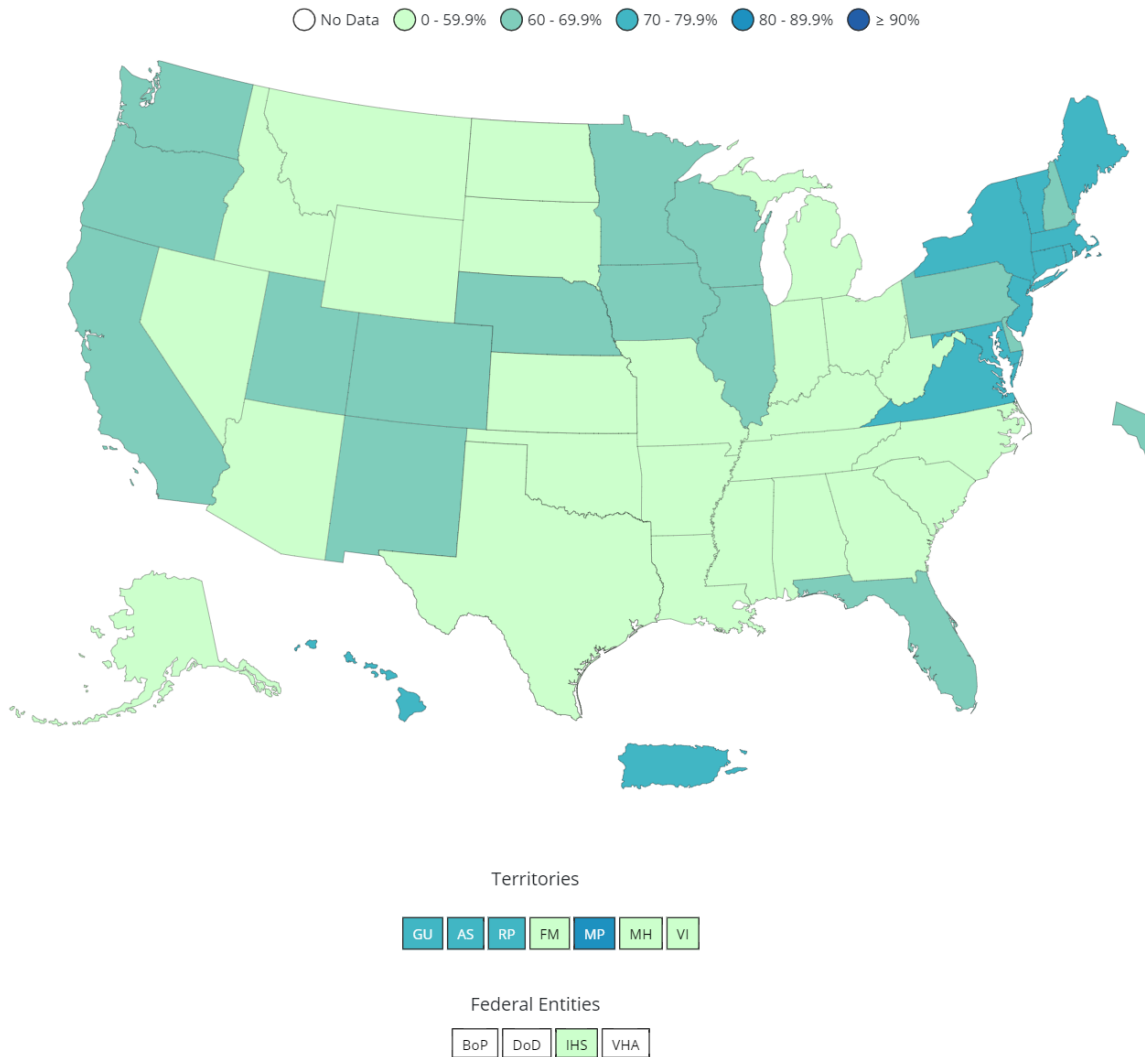
Table 6. Percentage of Total Population Fully Vaccinated and Boosted by Washoe County, Nevada, and the United States, 2021-2022

	% Population Fully Vaccinated	% Population Boosted
United States*	63.6%	26.0%
Nevada*	58.3%	20.5%
Washoe County**	60.0%	24.4%

* Data Source: https://covid.cdc.gov/covid-data-tracker/#vaccinations_vacc-people-fully-percent-total as of 1/27/2022.

** Data Source: WebIZ as of 1/24/2022.

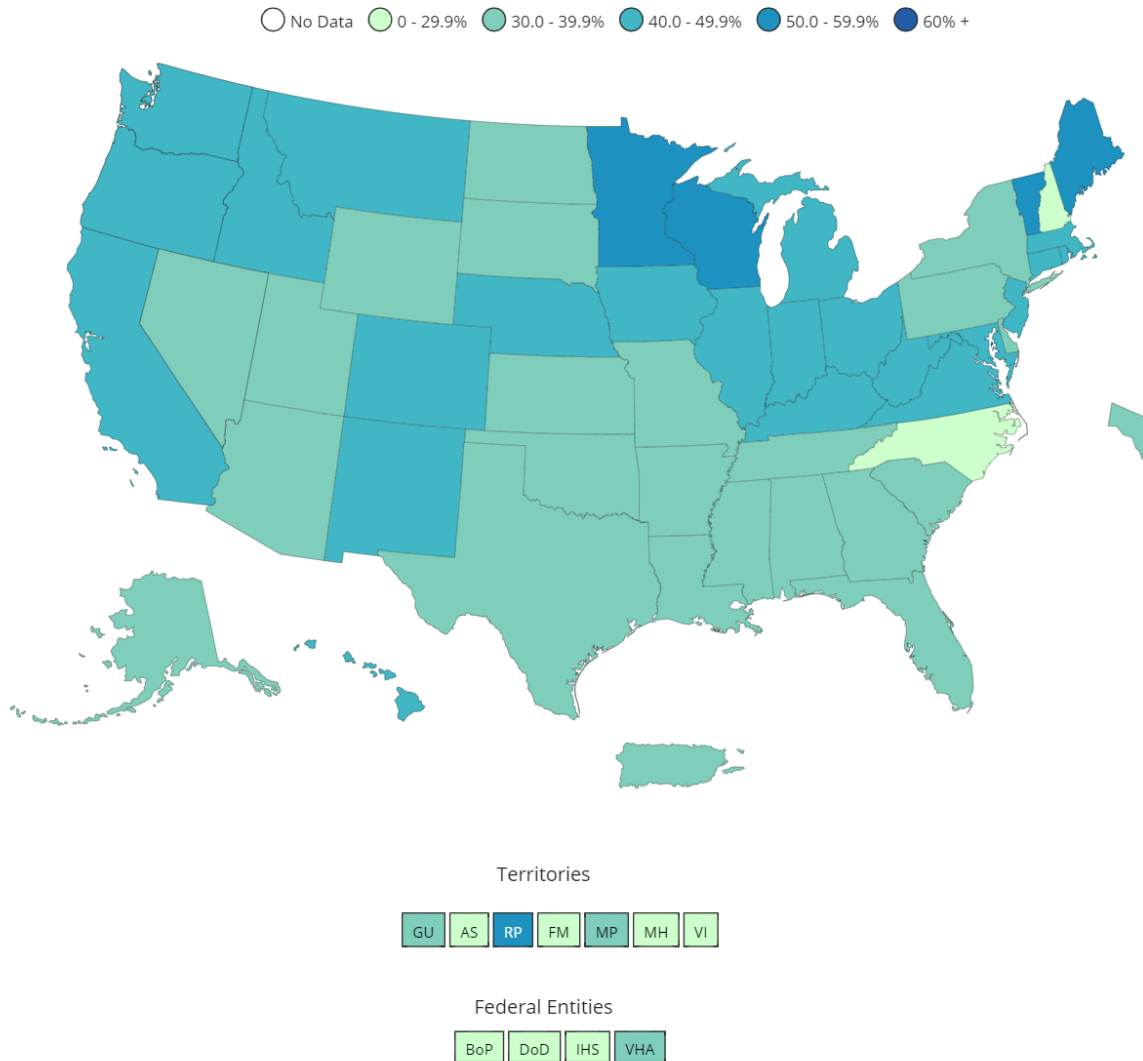
Figure 8. Percent of People Fully Vaccinated Reported to the CDC by State/Territory and for Select Federal Entities for the Total Population



Data for Federal Entities are presented here and are also incorporated into the respective jurisdictional totals

Data source for U.S. map for fully vaccinated people reported to the CDC, as of 1/24/2022 6:00 AM ET. Posted: Monday, January 24, 2022, 3:33 PM ET, CDC COVID Data Tracker https://covid.cdc.gov/covid-data-tracker/#vaccinations_vacc-people-fully-percent-total

Figure 9. Percent of Fully Vaccinated People with a Booster Dose Reported to the CDC by State/Territory or Select Federal Entities for the Total Population



Data for Federal Entities are presented here and are also incorporated into the respective jurisdictional totals

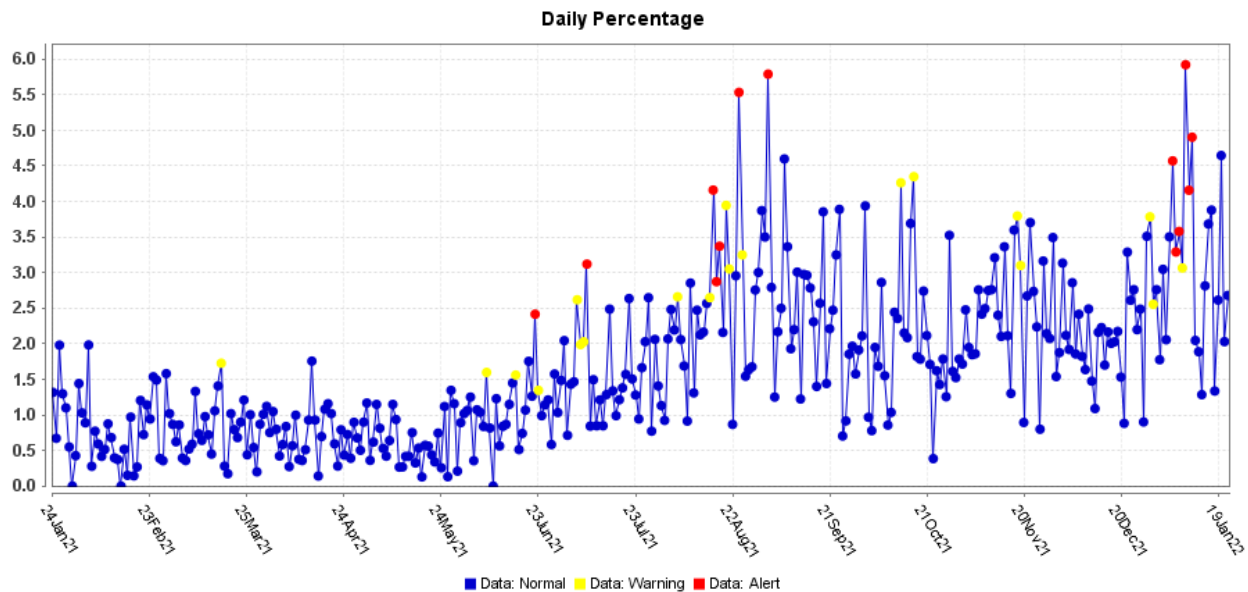
Data source for U.S. map for fully vaccinated people reported to the CDC, as of 1/24/2022 6:00 AM ET. Posted: Monday, January 24, 2022, 3:33 PM ET, CDC COVID Data Tracker https://covid.cdc.gov/covid-data-tracker/#vaccinations_vacc-people-additional-dose-totalpop

Note: Percent of fully vaccinated people with a booster dose is a different metric than percentage of total population who received a booster dose provided in Table 6.

Surveillance Data

Percentage of persons indicating COVID-19 as the reason for visit to the Emergency Room (ER) is presented in Figure 10. The overlay below depicts COVID-19 in blue. Alerts appear as yellow and/or red dots. They indicate an unusually high percentage of COVID-19 visits according to ESSENCE algorithms.

Figure 10. Percentage of ER Visits Due to COVID in the Last Year, Washoe County



Data source: ESSENCE

Glossary/Key Terms

COVID-19 Case

Coronavirus Disease 2019 (COVID-19) cases counted in this document are confirmed or probable cases as determined by meeting confirmatory laboratory evidence, clinical criteria, and/or epidemiologic linkage as defined on the CDC website here:

<https://ndc.services.cdc.gov/case-definitions/coronavirus-disease-2019-2021/>

COVID-19 Hospitalization

COVID-19 hospitalizations are counted as those hospitalized for greater than or equal to 24 hours and have a positive SARS-CoV-2 laboratory test.

COVID-19 Death

As of January 1, 2022, both Confirmed and Probable COVID-19-associated deaths are included in the count.

- (https://cdn.ymaws.com/www.cste.org/resource/resmgr/pdfs/pdfs2/20211222_intirim-guidance.pdf)

Criteria for confirmed case death:

- The case meets the confirmed COVID-19 surveillance case definition, AND at least ONE of the following criteria is met:
 - A case investigation determined that COVID-19 was the cause of death or contributed to the death.
 - The death certificate indicates COVID-19 or an equivalent term as one of the causes of death, regardless of the time elapsed since specimen collection of the confirmatory laboratory test used to define the case.
 - The death occurred within (and including) 30 days of specimen collection for the confirmatory laboratory test used to define the case and was due to natural causes (e.g., the Manner of Death is coded as “natural” on the death certificate.)

Criteria for probable case death:

- The case meets the probable COVID-19 case definition AND a case investigation determined that COVID-19 was the cause of death or contributed to the death; **OR**
- The case meets the probable COVID-19 surveillance case definition based on presumptive laboratory evidence AND death occurred within (and including) 30 days of specimen collection and was due to natural causes (e.g., the Manner of Death is coded as “natural” on the death certificate.); **OR**
- The case meets the probable COVID-19 surveillance case definition based on epidemiologic linkage and meeting clinical criteria, AND death occurred within (and including) 30 days of symptom onset and was due to natural causes (e.g., the Manner of Death is coded as “natural” on the death certificate.); **OR**
- The case meets the probable COVID-19 surveillance case definition based only on vital records criteria (i.e. a death certificate that lists COVID-19 disease or SARS-CoV-2 or an equivalent term as an underlying cause of death or a significant condition contributing to death and there is no confirmatory or presumptive laboratory evidence.)

Links

WCHD COVID Dashboard

<https://washoe.maps.arcgis.com/apps/dashboards/0db36fa8fa9c47758bc38210e4c23818>

WCHD website for COVID information and vaccine appointments

<https://www.washoecounty.gov/health/index.php?choice=bdr>

CDC COVID Data Tracker <https://covid.cdc.gov/covid-data-tracker/>

Nevada State Public Health Laboratory created a new COVID-19 variant web page

<https://www.nvsarscov2variant.com/variants>

Department of Health and Human Services Nevada Division of Public and Behavioral Health (DPBH) Technical Bulletins

https://dpbh.nv.gov/Resources/Technical_Bulletins-New/

This COVID Report and others can be found at <https://covid19washoe.com/daily-updates/washoe-county-covid-19-data-report/>