

COVID-19 Epidemiology Surveillance Program
MMWR Week #50 – 51, Dec. 12 – Dec. 25, 2021

Division of Epidemiology & Public Health Preparedness (EHP) 775-328-2447

Adam Vazquez, MPH, COVID-19 Epidemiologist AVazquez@washoecounty.gov

Lissa Callahan, COVID-19 Statistician LCallahan@washoecounty.gov

Weekly Summary*

Metrics	Week 50	Week 51
Number of New Cases	547	681
New Cases per 100,000 Population	113	141
Breakthrough Cases	181	168
Hospitalizations**	20	17
Deaths**	5	3

- Completed Vaccination Total through 12/25/2021: 283,126 persons

*For definition and specifics on metrics summarized, please refer to corresponding sections.

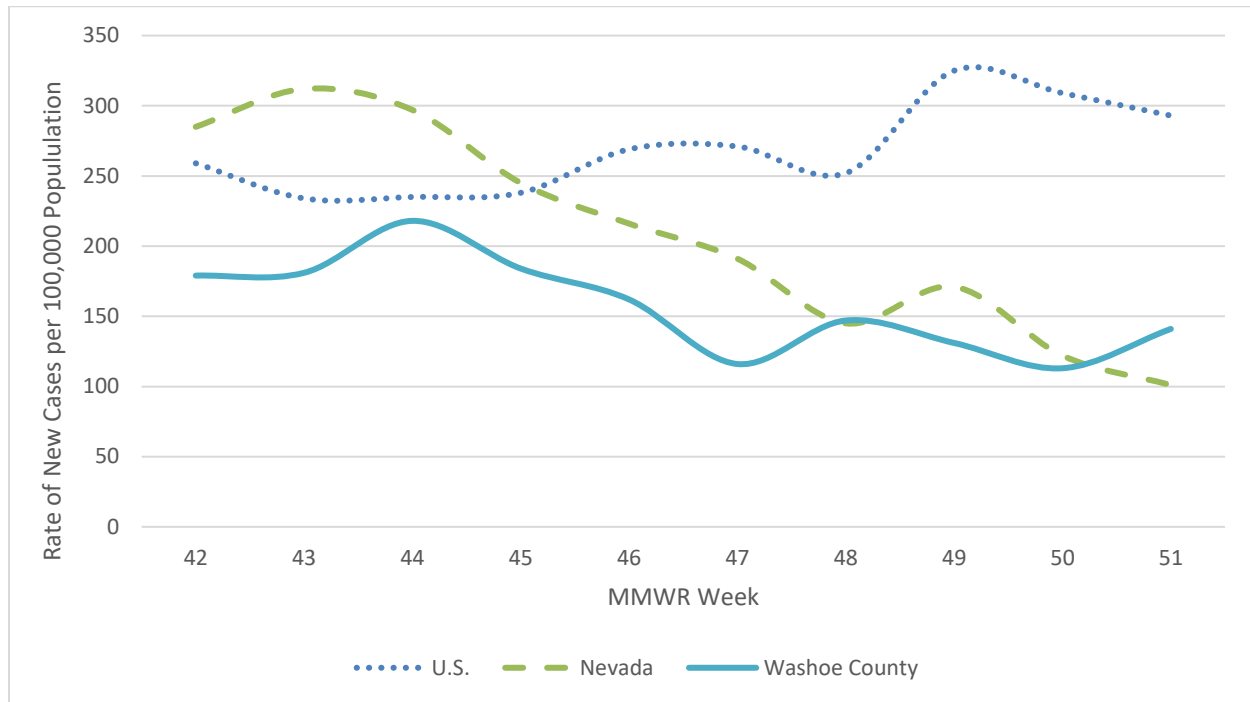
**Note: hospitalization and death totals for each week are subject to change as new reports are received on a daily basis and are often delayed, causing underreporting in more recent MMWR weeks.

Key message(s)

- The COVID-19 Omicron variant has been reported in Washoe County.
- On December 23 and 27, 2021, the Centers for Disease Control and Prevention (CDC) updated guidance to shorten the recommended isolation and quarantine period for healthcare providers and the general population. On December 29, 2021, the state of Nevada released Technical Bulletins to adopt the new CDC guidelines for the state.
 - https://dpbh.nv.gov/Resources/Technical_Bulletins-New/

COVID-19 Case Information

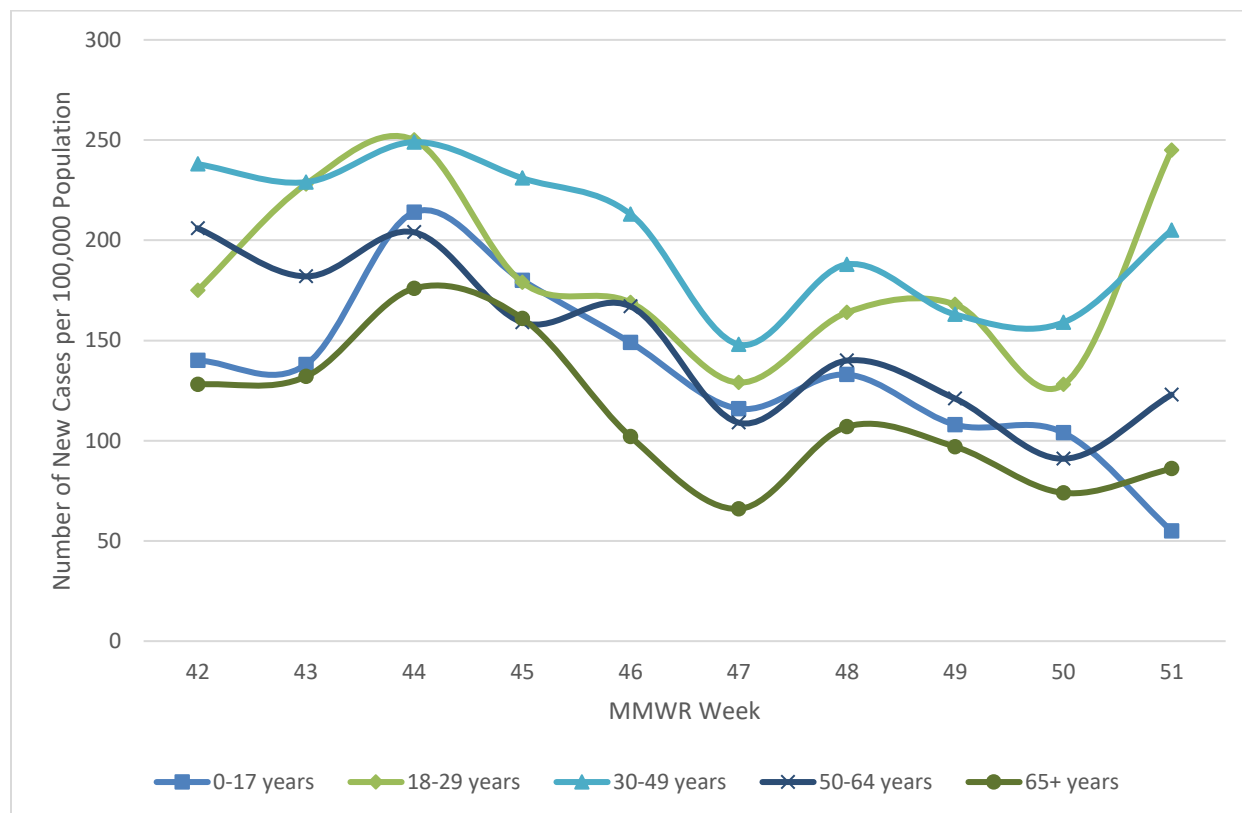
Figure 1. Rate of New Cases Reported by MMWR Week, Washoe County, Nevada, and the United States, 2021



Data source: <https://data.cdc.gov/Public-Health-Surveillance/United-States-COVID-19-County-Level-of-Community-T/8396-v7yb>

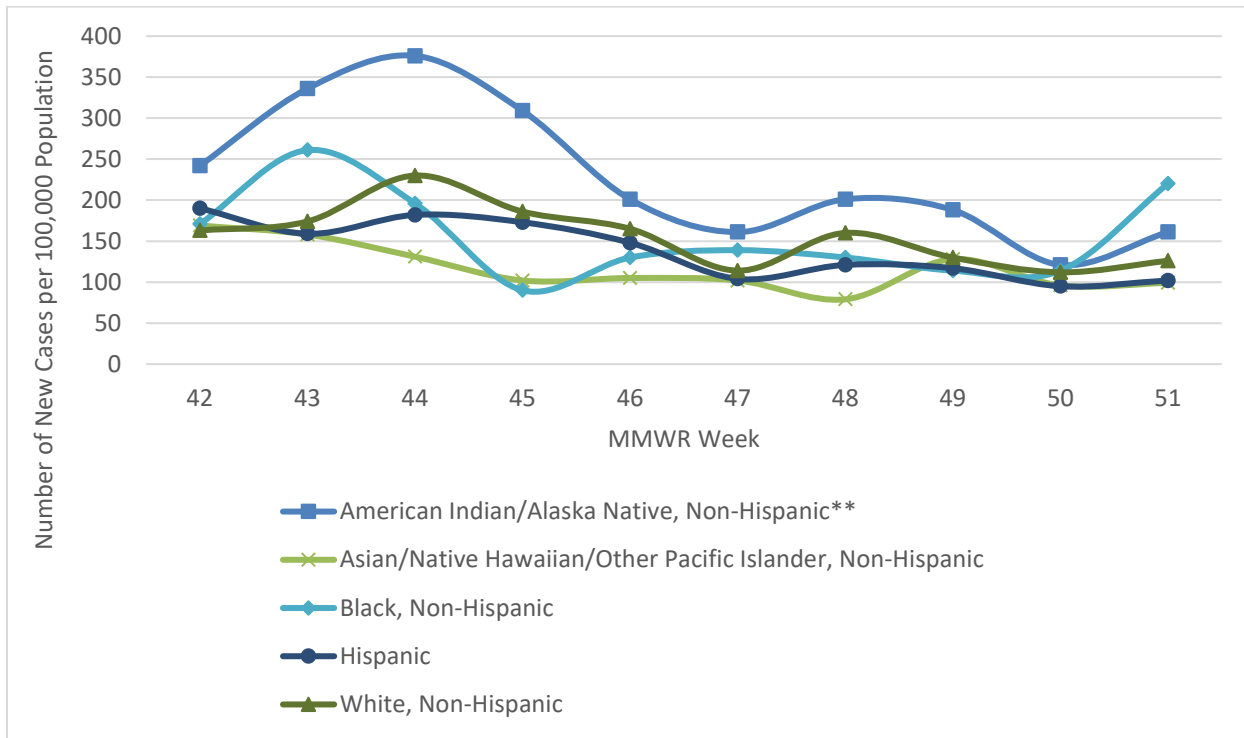
- In Washoe County, case counts increased from MMWR week 50 to week 51. During week 50 and week 51 there were 113 and 141 new cases per 100,000 population, respectively.
- This increase put Washoe County above the state of Nevada in new cases per 100,000 population by the end of week 51.
- In the state of Nevada, case counts decreased to 101 new cases per 100,000 population in MMWR week 51 from a high of 312 new cases per 100,000 population in MMWR week 43.
- In the United States, case counts remain high. During MMWR week 50 and week 51 there were 309 and 293 new cases per 100,000 population, respectively.

Figure 2. Rate of New Cases Reported by Age Group and MMWR Week, Washoe County, 2021



- From MMWR week 41 through week 50 the age group consistently reporting the highest rate of new cases reported per 100,000 population was among those aged 30-49 years with the 18-29 age group reporting the highest rate in week 49.
- The age group with highest case rate per 100,000 population by the end of week 51 was the 18-29 age group with 245 new cases per 100,000 population. Followed by the 30-49 age group with 205 new cases per 100,000 population.
- The 0-17 age group became the age group with the lowest number of new cases per 100,000 in week 51.

Figure 3. Rate of New Cases Reported by Race/Ethnicity* and MMWR Week, Washoe County, 2021



*Note: From MMWR week 42 to week 51, 5.9% of cases were recorded as “Declined to answer”, “Multiple”, “Other”, or “Unknown” and rates per 100,000 population are unable to be calculated for those categories.

**Note: Tribal populations may be underrepresented as data source does not include Indian Health Services (IHS) data, which may contain vaccination records for tribal members and those who access services through IHS clinics.

- From MMWR week 42 through 50, those who identified as American Indian/Alaska Native had the highest rate of new cases per 100,000 population.
- The rate of new cases per 100,000 in American Indian/Alaska Native peaked in week 44 with 376 cases per 100,000 population.
- In MMWR week 51, those who identified as Black, Non-Hispanic had the highest rate with 220 new cases per 100,000 population.

Hospitalizations, ICU Status, & Deaths

COVID-19 hospitalizations are defined as those hospitalized for greater than or equal to 24 hours and have a positive SARS-CoV-2 laboratory test.

COVID-19 deaths are defined as decedents who have had a positive PCR COVID-19 lab report \leq 30 days from death or post-mortem. This includes deaths attributed to COVID-19 related illnesses and, if not specifically listed on death certificate, a positive PCR COVID-19 lab, dependent on the manner of death. See full definition in Glossary/Key Terms at the end of the report.

Table 1. Number and Percent of New Cases Reported by Age and Hospitalization Status, MMWR Weeks* 50 and 51, Washoe County, 2021

			Age Group				
			0-17	18-29	30-49	50-64	65+
MMWR Week	50	Total Cases	112	103	195	79	58
		% Hospitalized	0.0%	0.0%	4.6%	5.1%	12.1%
	51	Total Cases	59	197	251	107	67
		% Hospitalized	0.0%	0.0%	2.4%	3.7%	10.4%

* Note: hospitalization totals for each week are subject to change as new reports are received on a daily basis and are often delayed, causing underreporting in more recent MMWR weeks.

- During MMWR week 50 and week 51 the age groups with the highest percentage of total cases resulting in hospitalization were those aged 50-64 and 65+ years of age.
- In Washoe County, during MMWR week 50 and week 51, 5.1% and 3.7% of the cases in the 50-64 age group were hospitalized, respectively.
- In Washoe County, during MMWR week 50 and week 51, 12.1% and 10.4% of the cases in the 65+ age group were hospitalized, respectively.

Table 2. Number and Percentage of Cases Reported by Hospitalization and ICU Status by MMWR Week*, Washoe County, 2021

MMWR Week	New Cases	Hospitalized		ICU	
		#	%	#	%
42	863	54	6.3	12	1.4
43	873	75	8.6	16	1.8
44	1,052	55	5.2	15	1.4
45	885	48	5.4	12	1.4
46	783	50	6.4	7	0.9
47	557	30	5.4	6	1.1
48	711	29	4.1	5	0.7
49	631	38	6.0	4	0.6
50	547	20	3.7	3	0.5
51	681	17	2.5	3	0.4

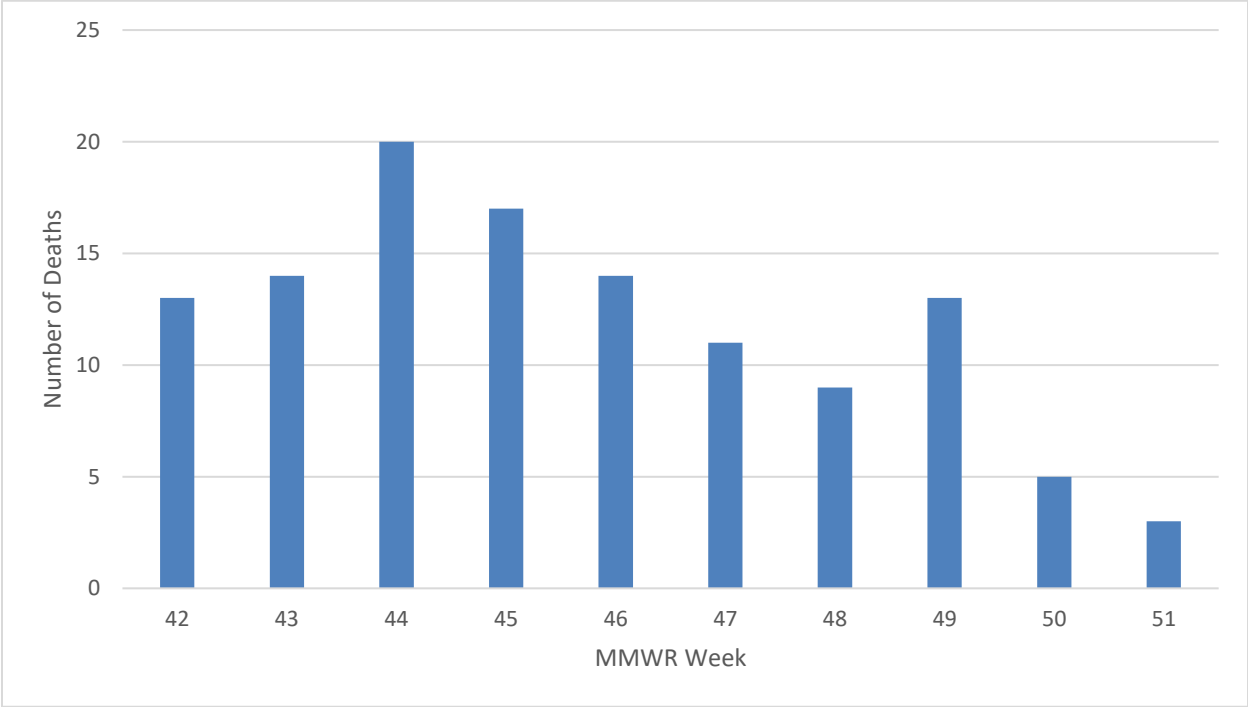
*Note: hospitalization and ICU totals for each week are subject to change as new reports are received on a daily basis and are often delayed, causing underreporting in more recent MMWR weeks.

Table 3. COVID-19 Deaths by Age Group and Month* of Death, Washoe County, 2021

Month	Total Deaths	Age Group				
		0-17	18-29	30-49	50-64	65+
January	108	0	0	7	15	86
February	39	0	0	0	4	35
March	14	0	0	2	4	8
April	7	0	0	1	2	4
May	10	0	1	2	2	5
June	5	0	0	1	1	3
July	7	0	0	2	2	3
August	68	0	1	11	14	42
September	99	0	1	8	33	57
October	65	0	0	9	18	38
November	58	0	2	6	13	37

*Note: death totals for each month are subject to change as new reports are received on a daily basis and are often delayed, causing underreporting in more recent months.

Figure 4. Number of Deaths Occurring by MMWR Week*, Washoe County, 2021



*Note: death totals for each week are subject to change as new reports are received on a daily basis and are often delayed, causing underreporting in more recent MMWR weeks.

Breakthrough Cases

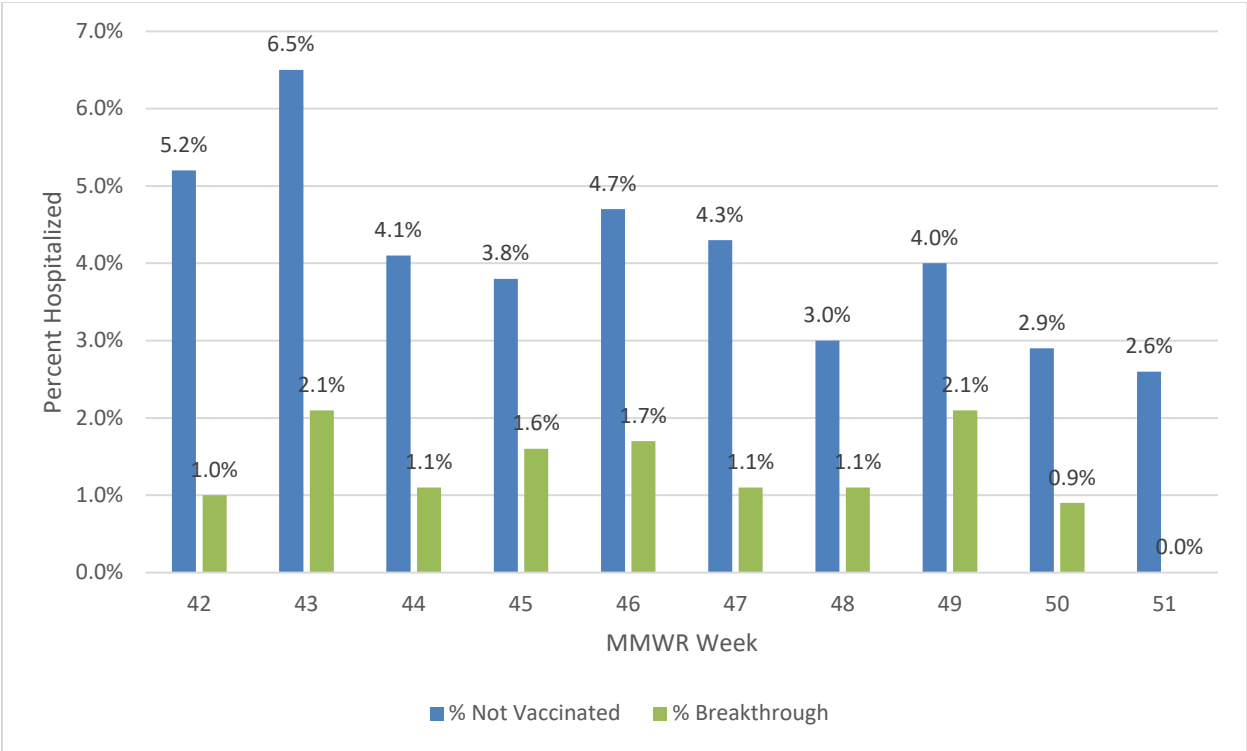
A breakthrough COVID-19 case is defined as a Washoe County resident who has SARS-CoV-2 PCR or antigen detected through laboratory testing 14 or more days after completing the primary series of an FDA-authorized COVID-19 vaccine.

Table 4. Number and Percentage of Cases Reporting Hospitalization and ICU by Vaccination Status and MMWR Week*, Washoe County, 2021

MMWR Week	All Cases			Unvaccinated Cases				Breakthrough Cases			
	New Cases	Total Hospitalized	Total ICU	Hospitalized		ICU		Hospitalized		ICU	
				#	%	#	%	#	%	#	%
42	863	54	12	45	5.2	11	1.3	9	1.0	1	0.1
43	873	75	16	57	6.5	12	1.4	18	2.1	4	0.5
44	1,052	55	15	43	4.1	12	1.1	12	1.1	3	0.3
45	885	48	12	34	3.8	10	1.1	14	1.6	2	0.2
46	783	50	7	37	4.7	6	0.8	13	1.7	1	0.1
47	557	30	6	24	4.3	6	1.1	6	1.1	0	0.0
48	711	29	5	21	3.0	4	0.6	8	1.1	1	0.1
49	631	38	4	25	4.0	3	0.5	13	2.1	1	0.2
50	547	20	3	15	2.7	3	0.5	5	0.9	0	0.0
51	681	17	3	17	2.5	3	0.4	0	0.0	0	0.0

*Note: hospitalization and ICU totals for each week are subject to change as new reports are received on a daily basis and are often delayed, causing underreporting in more recent MMWR weeks.

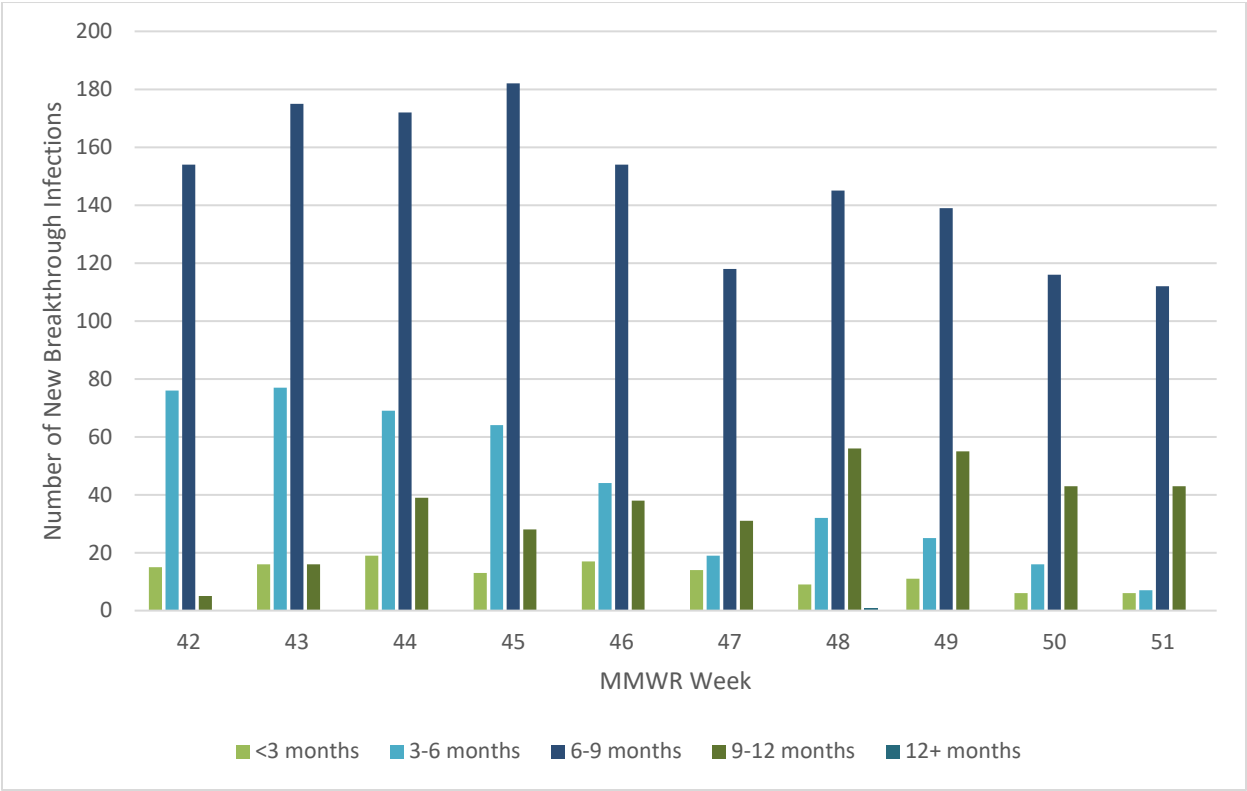
Figure 5. Percentage of Reported Cases Hospitalized by Vaccination Status and MMWR Week*, Washoe County, 2021



*Note: hospitalization totals for each week are subject to change as new reports are received on a daily basis and are often delayed, causing underreporting in more recent MMWR weeks.

- From MMWR week 42 through week 51, there was a higher percentage of hospitalized unvaccinated cases compared to vaccinated cases.
- In Washoe County, during MMWR week 43 through 51, the percent hospitalized in unvaccinated cases decreased from 6.5% to 2.6%.

Figure 6. Number of Breakthrough Infections by Duration from Last Dose of Vaccination to Infection by MMWR Week, Washoe County, 2021



- The number of new breakthrough cases in individuals who were vaccinated 6-9 months prior to SARS-CoV-2 infection steadily decreased from a 10-week high in week 45 at 182 cases to a 10-week low in week 51 at 112 cases.
- From MMWR week 48 to week 51, the number of new breakthrough infections in individuals who were vaccinated 3-6 months prior to SARS-CoV-2 infection decreased from 32 to 7 new cases.
- The number of breakthrough cases in individuals who were vaccinated <3 months prior to SARS-CoV-2 infection remains low, but by the end of MMWR week 51 decreased to 6 new cases.

Vaccinations

Current dose and vaccination totals and percentages for Washoe County residents; data as of 12/25/2021.

140,025 doses reported as administered per 100,000 population (to date)

66,241 (66.2% of population) vaccinations reported as initiated per 100,000 population

58,722 (58.7% of population) vaccinations reported as completed per 100,000 population

71.5% of population 5 years and older initiated vaccination

63.4% of population 5 years and older completed vaccination

Figure 7. Percentage of Population Fully Vaccinated, Washoe County, 2021

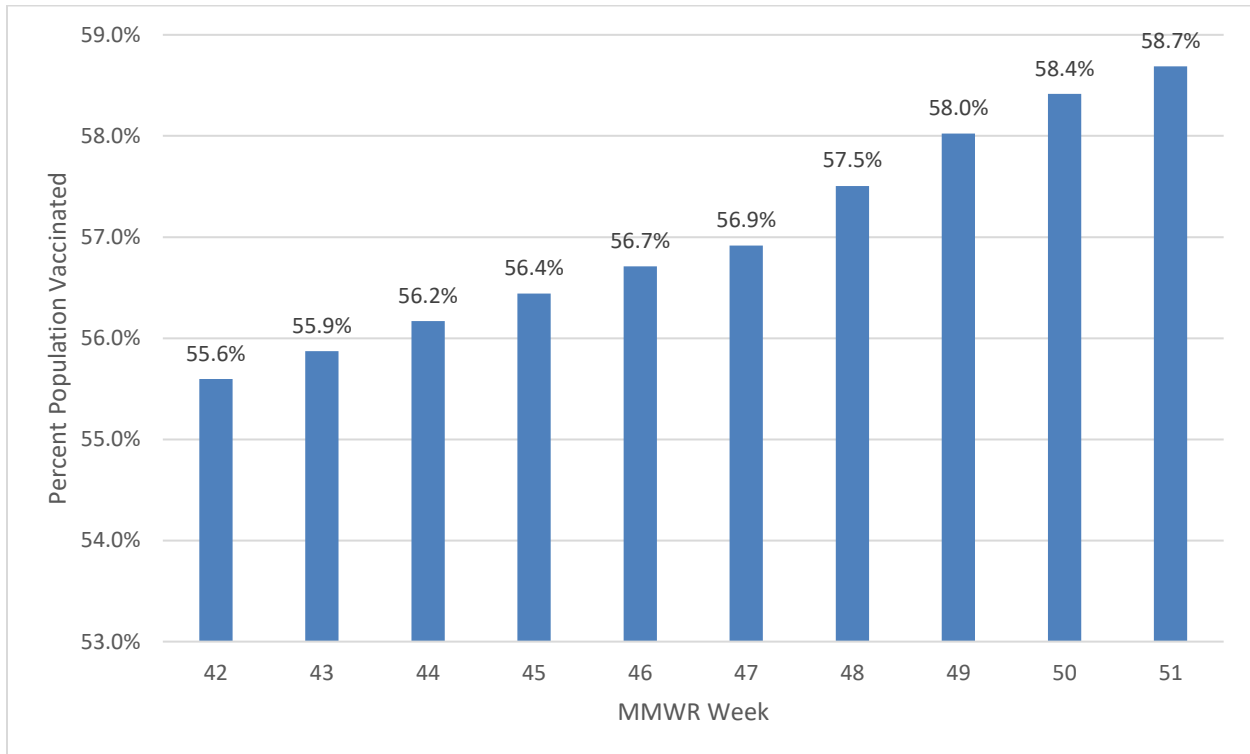


Table 5. Percentage of Population Vaccinated by Sex, Age Group, and Race/Ethnicity*, Washoe County, 2021

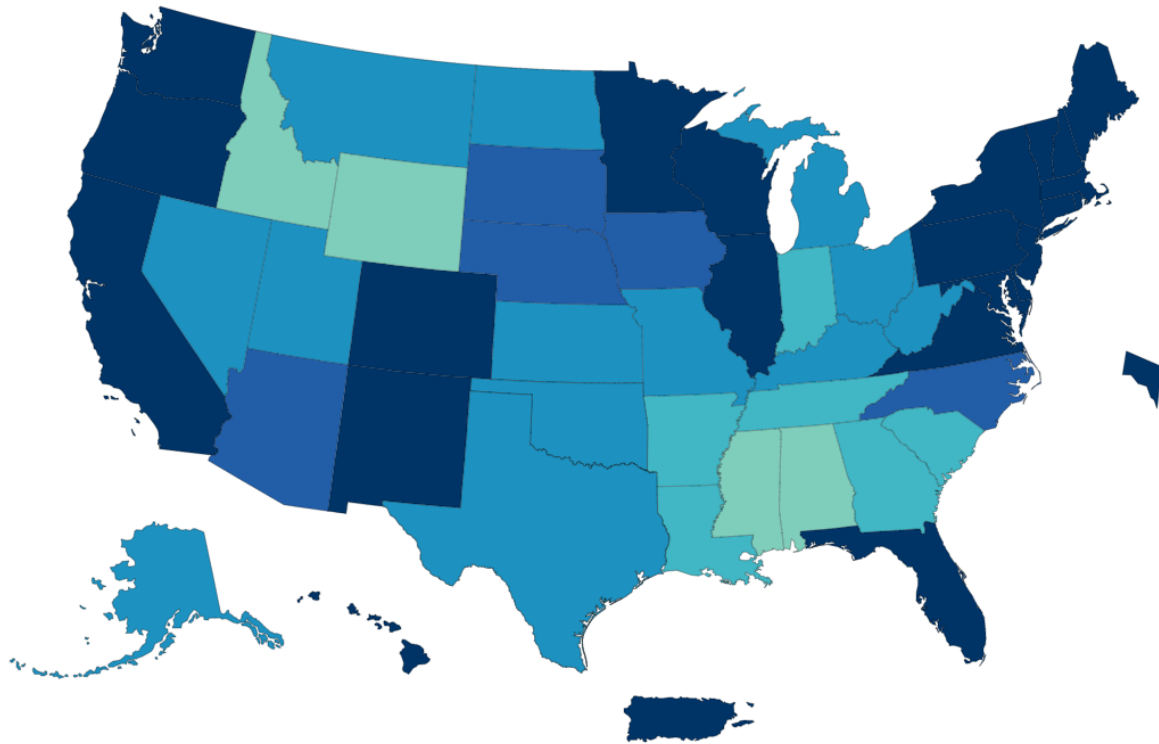
Select Demographics		% Population Vaccinated
Sex	Female	62.5%
	Male	56.4%
Age Group	0-17 years	21.5%
	18-29 years	60.3%
	30-49 years	64.9%
	50-64 years	76.6%
	65+ years	83.6%
Race / Ethnicity	American Indian/Alaska Native, Non-Hispanic**	29.2%
	Asian/Native Hawaiian/Other Pacific Islander, Non-Hispanic	43.5%
	Black, Non-Hispanic	34.0%
	Hispanic	44.5%
	White, Non-Hispanic	47.4%

*Note: Note: 23.2% of the total vaccinated population were recorded as “Unknown” or “Other” and therefore population percentages are unable to be calculated for those categories. Additionally, 1.3% of the total Washoe County population had missing demographic information and therefore were not included in the overall calculations.

**Note: Tribal populations may be underrepresented as data source does not include Indian Health Services (IHS) data, which may contain vaccination records for tribal members and those who access services through IHS clinics.

- In Washoe County, the 65+ age group has the highest percent vaccinated, with 83.4% of the 65+ population. Followed by the 50-64 age group with 76.6% of individuals vaccinated.
- In Washoe County, those who identify as White, non-Hispanic have the highest percent vaccinated (47.4%), followed by Hispanic (44.5%) and Asian/Native Hawaiian/Other Pacific Islander, non-Hispanic (43.5%).

Figure 8. Total COVID-19 Vaccine Doses Administered Reported to the CDC by State/Territory and for Select Federal Entities per 100,000 of the Total Population



Territories



Federal Entities



Data for Federal Entities are presented here and are also incorporated into the respective jurisdictional totals

Total Doses Administered per 100,000

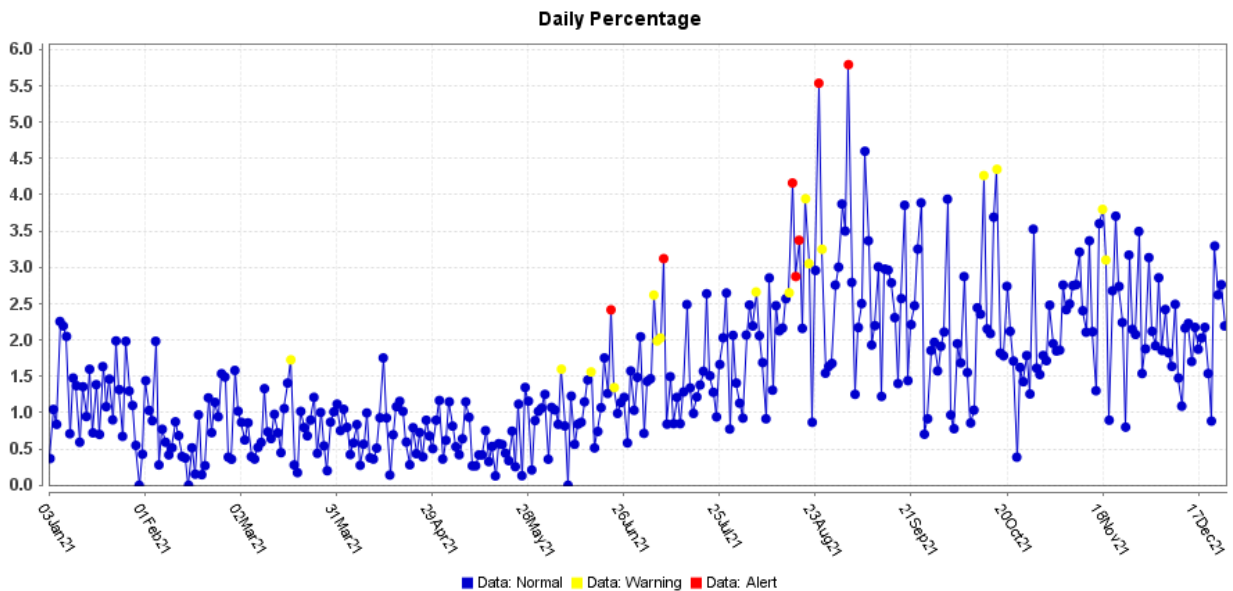


Data source for U.S. map for vaccination doses administered, as of 12/27/2021 6:00 AM ET. Posted: Monday, December 27, 2021, 3:55 PM ET, CDC COVID Data Tracker https://covid.cdc.gov/covid-data-tracker/#vaccinations_vacc-total-admin-rate-total

Surveillance Data

Percentage of persons indicating COVID-19 as the reason for visit to the Emergency Room (ER) is presented in Figure 9. The overlay below depicts COVID-19 in blue. Alerts appear as yellow and/or red dots. They indicate an unusually high percentage of COVID-19 visits according to ESSENCE algorithms.

Figure 9. Percentage of ER Visits Due to COVID through MMWR Week 51, 2021, Washoe County



Data source: ESSENCE

Glossary/Key Terms

COVID-19 Case

Coronavirus Disease 2019 (COVID-19) cases counted in this document are confirmed or probable cases as determined by meeting confirmatory laboratory evidence, clinical criteria, and/or epidemiologic linkage as defined on the CDC website here:

<https://ndc.services.cdc.gov/case-definitions/coronavirus-disease-2019-2021/>

COVID-19 Hospitalization

COVID-19 hospitalizations are counted as those hospitalized for greater than or equal to 24 hours and have a positive SARS-CoV-2 laboratory test.

COVID-19 Death

- Decedents with a positive PCR COVID-19 lab report (≤ 30 days from death or post-mortem)
- Decedents with a death certificate that lists a COVID-19-related term as a cause of death in Part I and have a history of a positive PCR COVID-19 lab report or

COVID-related terms include names for COVID-19, such as SARS-CoV-2, coronavirus, coronavirus-19, etc.

- Decedents with a pending cause of death that had a positive PCR lab test within 30 days of death AND symptoms indicative of COVID-19 (per investigation or medical report)
- Decedents with a death certificate that does not specifically list a COVID-19-related term that had a positive PCR lab result \leq 30 days before death and/or died within 30 days of COVID-19 symptom onset AND died in a manner of death deemed to be 'natural' on the death certificate

Exception: Deaths due to non-natural causes (e.g., accidental, intentional self-harm, homicide) should not be counted as a COVID-19 death even if the deceased had a confirmatory positive lab test within 30 days of death

Links

WCHD COVID Dashboard

<https://washoe.maps.arcgis.com/apps/dashboards/0db36fa8fa9c47758bc38210e4c23818>

WCHD website for COVID information and vaccine appointments

<https://www.washoecounty.gov/health/index.php?choice=bdr>

CDC COVID Data Tracker <https://covid.cdc.gov/covid-data-tracker/>

This COVID Report and others can be found at <https://covid19washoe.com/daily-updates/washoe-county-covid-19-data-report/>