

Division of Epidemiology & Public Health Preparedness (EHPH) 775-328-2447

Adam Vazquez, MPH, COVID-19 Epidemiologist [AVazquez@washoecounty.gov](mailto:AVazquez@washoecounty.gov)

Lissa Callahan, COVID-19 Statistician [LCallahan@washoecounty.gov](mailto:LCallahan@washoecounty.gov)

## Weekly Summary\*

Metrics	Week 52	Week 1
Number of New Cases	1,856	3,898
New Cases per 100,000 Population	385	808
Number of New Breakthrough Cases	721	579
Hospitalizations**	37	53
Deaths**	7	4

- Completed Vaccination Total through 01/08/2022: 286,614 persons

\*For definition and specifics on metrics summarized, please refer to corresponding sections.

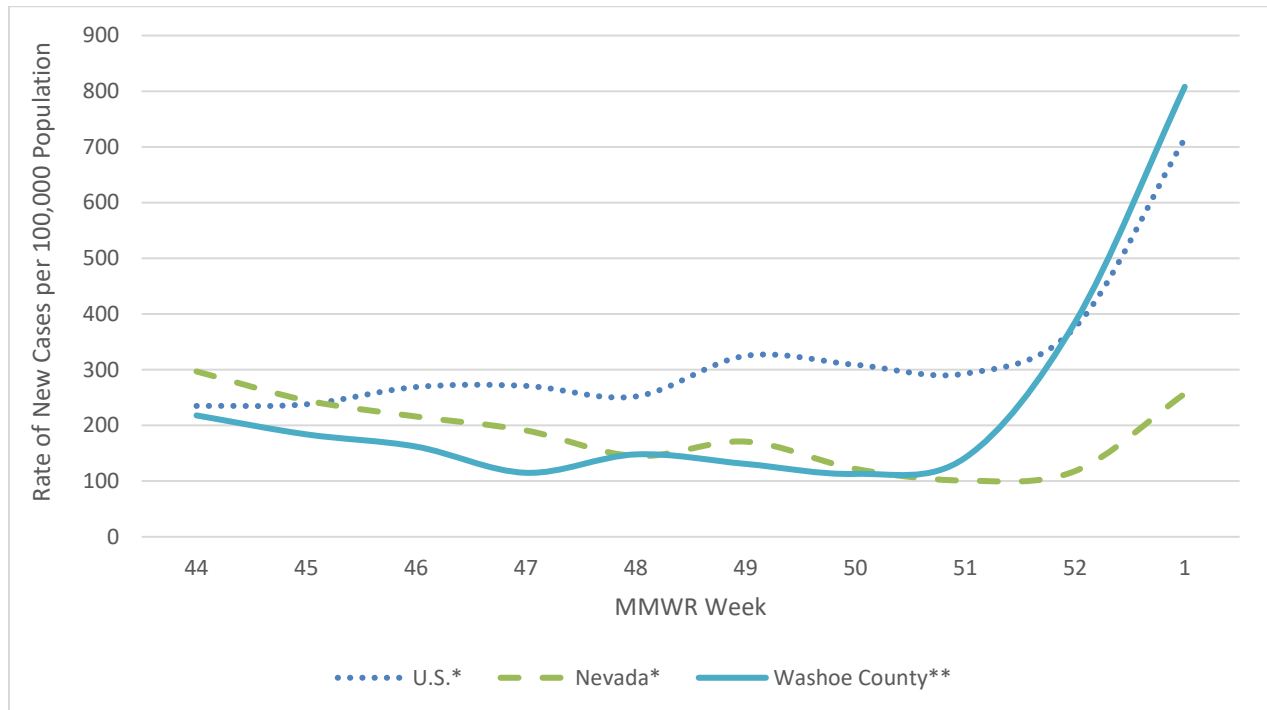
\*\*Note: hospitalization and death totals for each week are subject to change as new reports are received on a daily basis and are often delayed, causing underreporting in more recent MMWR weeks.

### Key message(s)

- The numbers in this report are indicating the impact of the Omicron surge on the case counts across the community.
- The surge we are noting in this report has been observed in jurisdictions around the world.
- The Nevada State Public Health Laboratory created a new COVID-19 variant web page that can be accessed here:
  - <https://www.nvsarscov2variant.com/variants>
  - In future reports this will be included in the 'Links' section.
- Moving forward, Figure 8 will be replaced because the scale of the current figure changed to accommodate capturing booster doses, making this data less meaningful. A new method of illustrating fully vaccinated and boosted (up-to-date with vaccination) will be selected for portraying the vaccination rates in Washoe County.

## COVID-19 Case Information

**Figure 1. Rate of New Cases Reported by MMWR Week, Washoe County, Nevada, and the United States, 2021-2022**

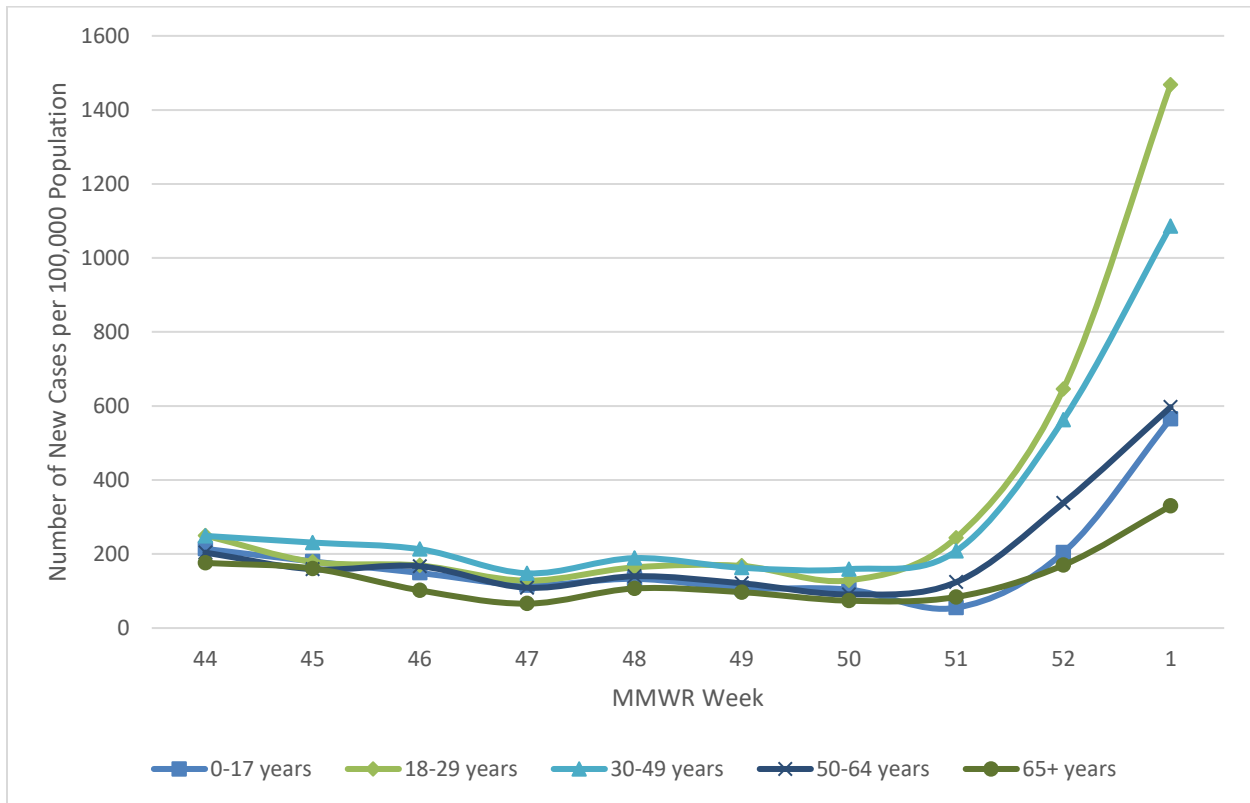


\*Data source: <https://data.cdc.gov/Public-Health-Surveillance/United-States-COVID-19-County-Level-of-Community-T/8396-v7yb>

\*\* Data source: Internal, WCHD

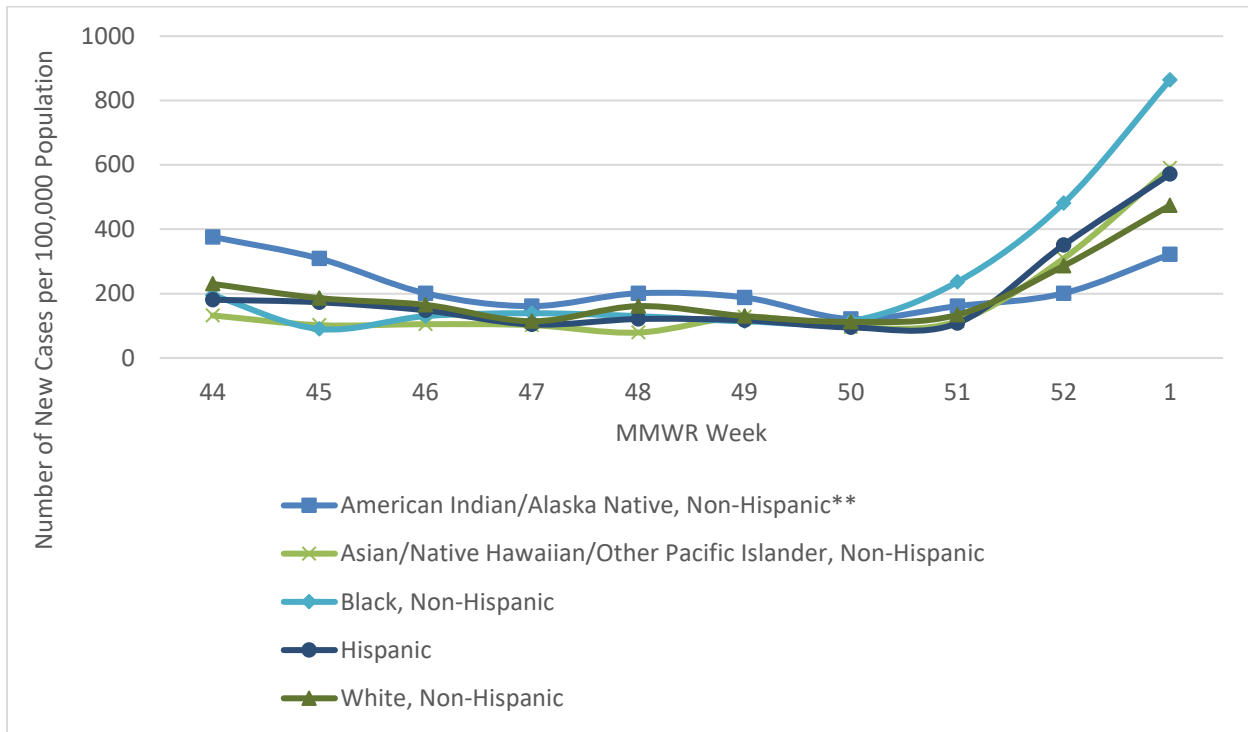
- In Washoe County, case counts increased in MMWR weeks 52 and 1. During MMWR week 51 there were 141 new cases per 100,000 population. Cases rose to 385 and 808 new cases per 100,000 population in MMWR week 52 and week 1, respectively
- In Nevada, case counts increased to 118 new cases per 100,000 population in MMWR week 52 and 257 new cases per 100,000 population in MMWR week 1.
- In the United States, case counts are also increasing. During MMWR week 52 and week 1 there were 376 and 715 new cases per 100,000 population, respectively.

**Figure 2. Rate of New Cases Reported by Age Group and MMWR Week, Washoe County, 2021-2022**



- In MMWR week 51 through week 1, there was an increase in cases per 100,000 population across all age groups.
- The age group with highest case rate per 100,000 population by the end of week 1 was the 18-29 age group with 1,468 new cases per 100,000 population. Followed by the 30-49 age group with 1,086 new cases per 100,000 population.
- The 65+ age group had the lowest number of new cases per 100,000 by the end of week 1 with 330.

**Figure 3. Rate of New Cases Reported by Race/Ethnicity\* and MMWR Week, Washoe County, 2021-2022**



\*Note: From MMWR week 44 to week 1, 18.6% of cases were recorded as “Declined to answer”, “Multiple”, “Other”, or “Unknown” and rates per 100,000 population are unable to be calculated for those categories.

\*\*Note: Tribal populations may be underrepresented as data source does not include Indian Health Services (IHS) data, which may contain vaccination records for tribal members and those who access services through IHS clinics.

- From MMWR week 44 through 50, those who identified as American Indian/Alaska Native had the highest rate of new cases per 100,000 population.
- The rate of new cases per 100,000 in American Indian/Alaska Native in week 44 were highest with 376 cases per 100,000 population.
- However, in weeks 51 through 1, those who identified as Black, Non-Hispanic had the highest rate of new cases per 100,000 population.
- In MMWR week 52 and 1, those who identified as Black, Non-Hispanic had 481 and 864 new cases per 100,000 population, respectively.

## Hospitalizations, ICU Status, & Deaths

COVID-19 hospitalizations are defined as those hospitalized for greater than or equal to 24 hours and have a positive SARS-CoV-2 laboratory test.

COVID-19 deaths are defined as decedents who have had a positive PCR COVID-19 lab report  $\leq$  30 days from death or post-mortem. This includes deaths attributed to COVID-19 related illnesses and, if not specifically listed on death certificate, a positive PCR COVID-19 lab, dependent on the manner of death. See full definition in Glossary/Key Terms at the end of the report.

**Table 1. Number and Percent of New Cases Reported by Age and Hospitalization Status, MMWR Weeks\* 52 and 1, Washoe County, 2021-2022**

			Age Group				
			0-17	18-29	30-49	50-64	65+
MMWR Week	52	Total Cases	220	520	688	294	133
		% Hospitalized	0.9%	1.3%	1.0%	2.0%	11.3%
	1	Total Cases	610	1181	1329	519	258
		% Hospitalized	1.1%	0.3%	0.8%	2.5%	7.0%

\* Note: hospitalization totals for each week are subject to change as new reports are received on a daily basis and are often delayed, causing underreporting in more recent MMWR weeks.

- During MMWR week 52 and week 1 the age groups with the highest percentage of total cases resulting in hospitalization were those aged 50-64 and 65+ years of age.
- In Washoe County, during MMWR week 52 and week 1, 2.0% and 2.5% of the cases in the 50-64 age group were hospitalized, respectively.
- In Washoe County, during MMWR week 52 and week 1, 11.3% and 7.0% of the cases in the 65+ age group were hospitalized, respectively.

**Table 2. Number and Percentage of Cases Reported by Hospitalization and ICU Status by MMWR Week\*, Washoe County, 2021-2022**

MMWR Week	New Cases	Hospitalized		ICU	
		#	%	#	%
44	1,052	56	5.3	15	1.4
45	885	48	5.4	12	1.4
46	783	50	6.4	7	0.9
47	556	30	5.4	6	1.1
48	712	29	4.1	6	0.8
49	631	40	6.3	5	0.8
50	547	22	4.0	3	0.5
51	683	25	3.7	5	0.7
52	1,856	37	2.0	3	0.2
1	3,898	53	1.4	6	0.2

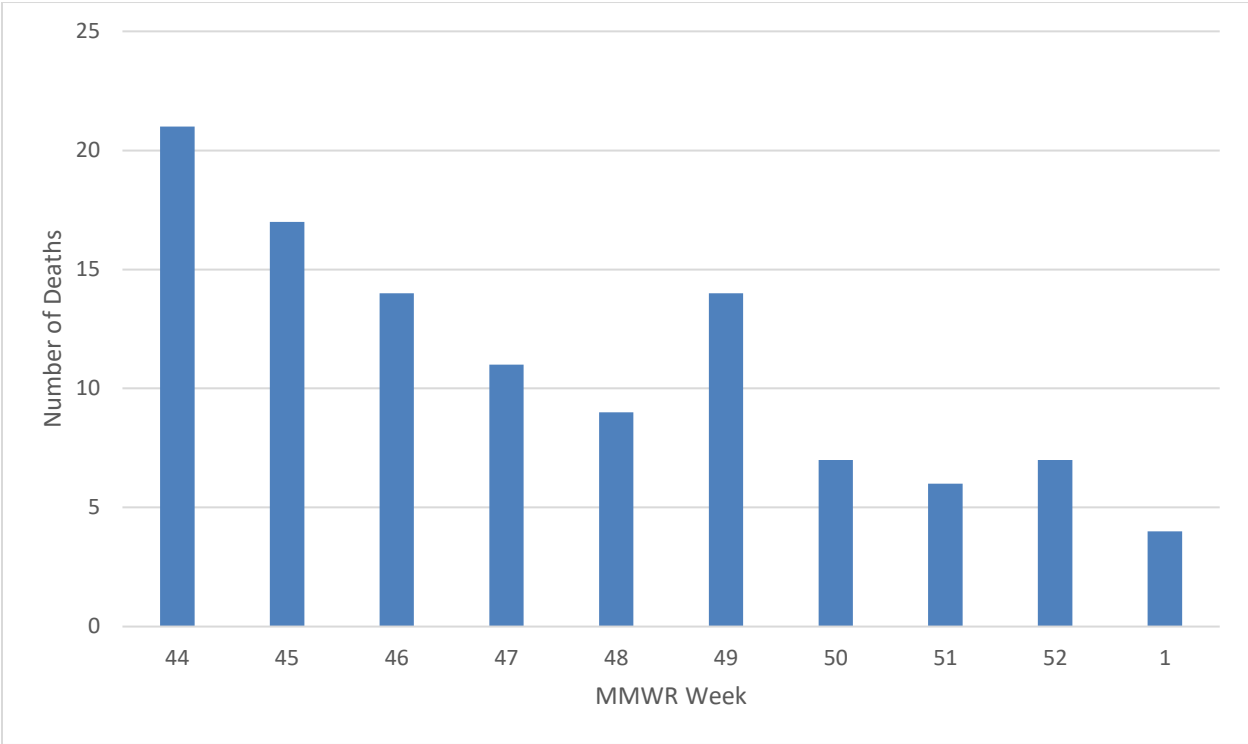
\*Note: hospitalization and ICU totals for each week are subject to change as new reports are received on a daily basis and are often delayed, causing underreporting in more recent MMWR weeks.

**Table 3. COVID-19 Deaths by Age Group and Month\* of Death, Washoe County, 2021-2022**

Month	Total Deaths	Age Group				
		0-17	18-29	30-49	50-64	65+
January	108	0	0	7	15	86
February	39	0	0	0	4	35
March	14	0	0	2	4	8
April	7	0	0	1	2	4
May	10	0	1	2	2	5
June	5	0	0	1	1	3
July	7	0	0	2	2	3
August	68	0	1	11	14	42
September	99	0	1	8	33	57
October	66	0	0	10	18	38
November	58	0	2	6	13	37
December	37	0	0	7	10	20

\*Note: death totals for each month are subject to change as new reports are received on a daily basis and are often delayed, causing underreporting in more recent months.

**Figure 4. Number of Deaths Occurring by MMWR Week\*, Washoe County, 2021-2022**



\*Note: death totals for each week are subject to change as new reports are received on a daily basis and are often delayed, causing underreporting in more recent MMWR weeks.

## Breakthrough Cases

A breakthrough COVID-19 case is defined as a Washoe County resident who has SARS-CoV-2 PCR or antigen detected through laboratory testing 14 or more days after completing the primary series of an FDA-authorized COVID-19 vaccine.

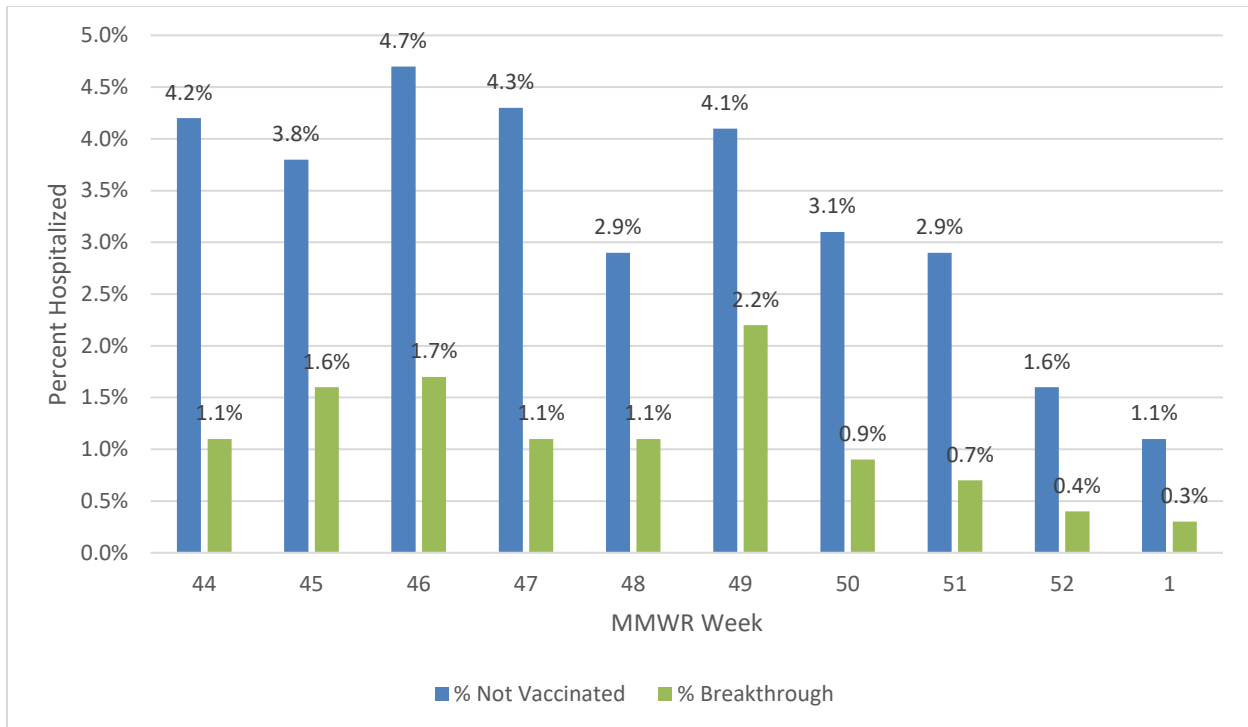
**Table 4. Number and Percentage of Cases Reporting Hospitalization and ICU by Vaccination Status and MMWR Week\*, Washoe County, 2021-2022**

MMWR Week	All Cases			Unvaccinated Cases				Breakthrough Cases			
	New Cases	Total Hospitalized	Total ICU	Hospitalized		ICU		Hospitalized		ICU	
				#	%	#	%	#	%	#	%
44	1,052	56	15	44	4.2	12	1.1	12	1.1	3	0.3
45	885	48	12	34	3.8	10	1.1	14	1.6	2	0.2
46	783	50	7	37	4.7	6	0.8	13	1.7	1	0.1
47	556	30	6	24	4.3	6	1.1	6	1.1	0	0.0
48	712	29	6	21	2.9	5	0.7	8	1.1	1	0.1
49	631	40	5	26	4.1	4	0.6	14	2.2	1	0.2
50	547	22	3	17	3.1	3	0.5	5	0.9	0	0.0
51	683	25	5	20	2.9	4	0.6	5	0.7	1	0.1
52	1,856	37	3	29	1.6	3	0.2	8	0.4	0	0.0
1	3,898	53	6	41	1.1	4	0.1	12	0.3	2	0.1

\*Note: hospitalization and ICU totals for each week are subject to change as new reports are received on a daily basis and are often delayed, causing underreporting in more recent MMWR weeks.



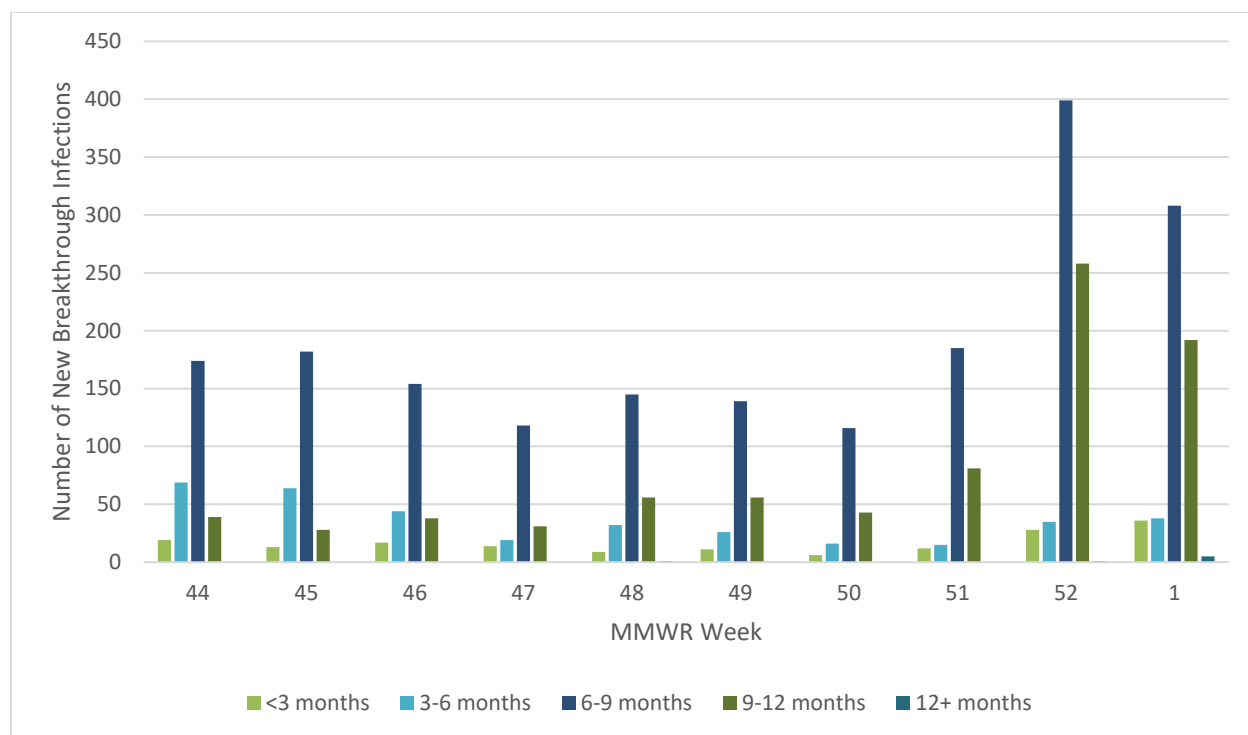
**Figure 5. Percentage of Reported Cases Hospitalized by Vaccination Status and MMWR Week\*, Washoe County, 2021-2022**



\*Note: hospitalization totals for each week are subject to change as new reports are received on a daily basis and are often delayed, causing underreporting in more recent MMWR weeks.

- From MMWR week 44 through week 1, there was a higher percentage of hospitalized unvaccinated cases compared to vaccinated cases.
- This trend has remained consistent for the duration of this report publication.

**Figure 6. Number of Breakthrough Infections by Duration from Last Dose of Vaccination to Infection by MMWR Week, Washoe County, 2021-2022**



- From MMWR week 50 to week 1, all groups had increased numbers of breakthrough cases.
- The number of new breakthrough cases in individuals who were vaccinated 6-9 months prior to SARS-CoV-2 infection is consistently the highest out of all the groups assessed with a 10-week high in week 52.
- From MMWR week 50 to week 52, the number of new breakthrough infections in individuals who were vaccinated 6-9 months prior to SARS-CoV-2 infection increased from 116 to 399 new cases.
- From MMWR week 50 to week 52, the number of new breakthrough infections in individuals who were vaccinated 9-12 months prior to SARS-CoV-2 infection increased from 43 to 258 new cases.
- The number of breakthrough cases in individuals who were vaccinated <3 months prior to SARS-CoV-2 infection remains low compared to other groups, however by the end of MMWR week 1 increased to 36 new cases.

## Vaccinations

Current dose and vaccination totals and percentages for Washoe County residents; data as of 01/08/2022.

**144,621** doses reported as administered per 100,000 population (to date)

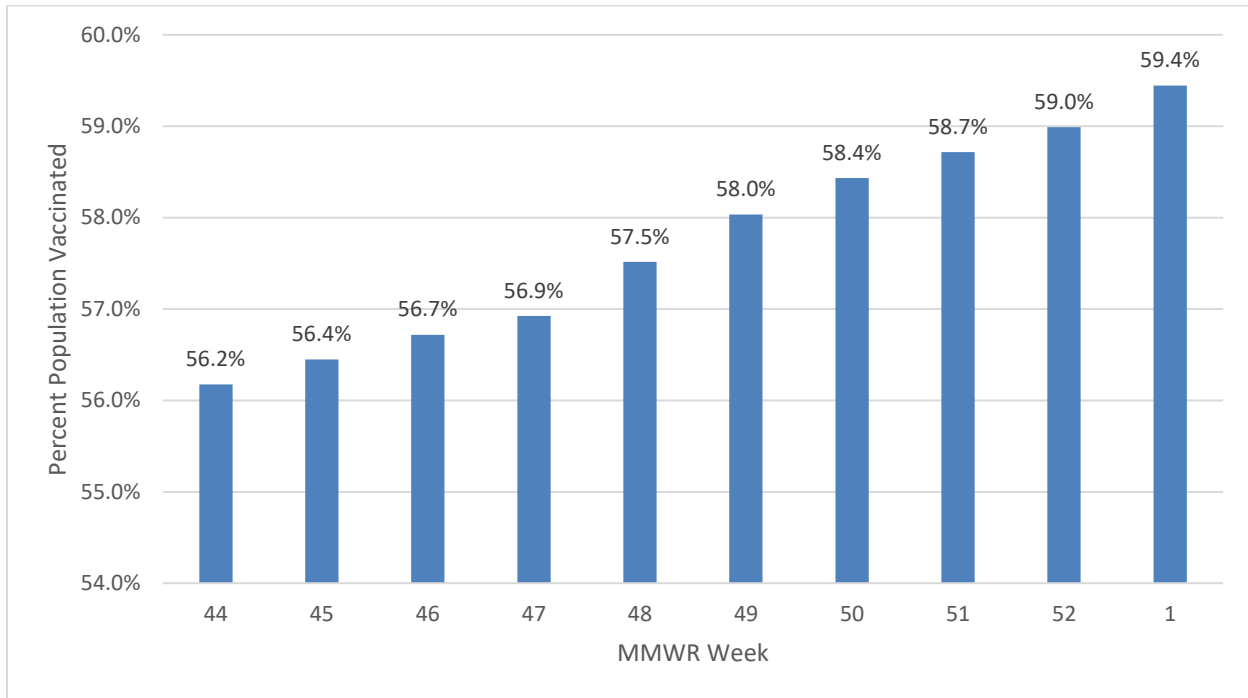
**67,173** (67.2% of population) vaccinations reported as initiated per 100,000 population

**59,523** (59.5% of population) vaccinations reported as completed per 100,000 population

**72.6%** of population 5 years and older initiated vaccination

**64.3%** of population 5 years and older completed vaccination

**Figure 7. Percentage of Population Fully Vaccinated, Washoe County, 2021-2022**



**Table 5. Percentage of Population Fully Vaccinated by Sex, Age Group, and Race/Ethnicity\*, Washoe County, 2021-2022**

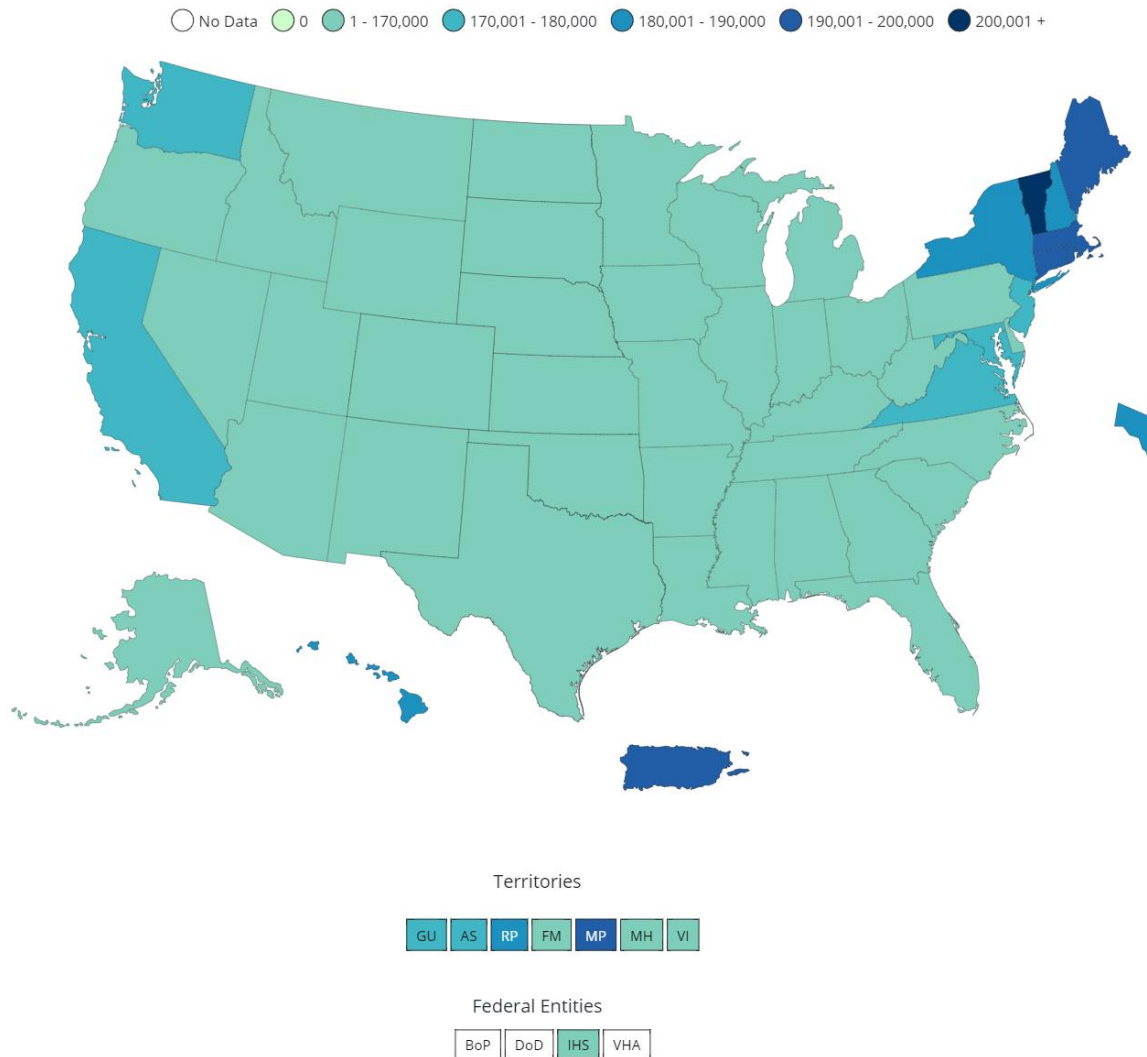
Select Demographics		% Population Fully Vaccinated
Sex	Female	63.3%
	Male	57.3%
Age Group	0-17 years	23.6%
	18-29 years	60.9%
	30-49 years	65.4%
	50-64 years	77.0%
	65+ years	83.9%
Race / Ethnicity*	American Indian/Alaska Native, Non-Hispanic**	29.9%
	Asian/Native Hawaiian/Other Pacific Islander, Non-Hispanic	43.9%
	Black, Non-Hispanic	34.4%
	Hispanic	45.6%
	White, Non-Hispanic	47.8%

\*Note: 23.2% of the total vaccinated population were recorded as “Unknown” or “Other” and therefore population percentages are unable to be calculated for those categories. Additionally, 1.3% of the total Washoe County population had missing demographic information and therefore were not included in the overall calculations.

\*\*Note: Tribal populations may be underrepresented as data source does not include Indian Health Services (IHS) data, which may contain vaccination records for tribal members and those who access services through IHS clinics.

- In Washoe County, the 65+ age group has the highest percent vaccinated, with 83.9% of the 65+ population. Followed by the 50-64 age group with 77.0% of individuals vaccinated.
- In Washoe County, those who identify as White, non-Hispanic have the highest percent vaccinated (47.8%), followed by Hispanic (45.6%) and Asian/Native Hawaiian/Other Pacific Islander, non-Hispanic (43.9%).

**Figure 8. Total COVID-19 Vaccine Doses Administered Reported to the CDC by State/Territory and for Select Federal Entities per 100,000 of the Total Population**



Data for Federal Entities are presented here and are also incorporated into the respective jurisdictional totals

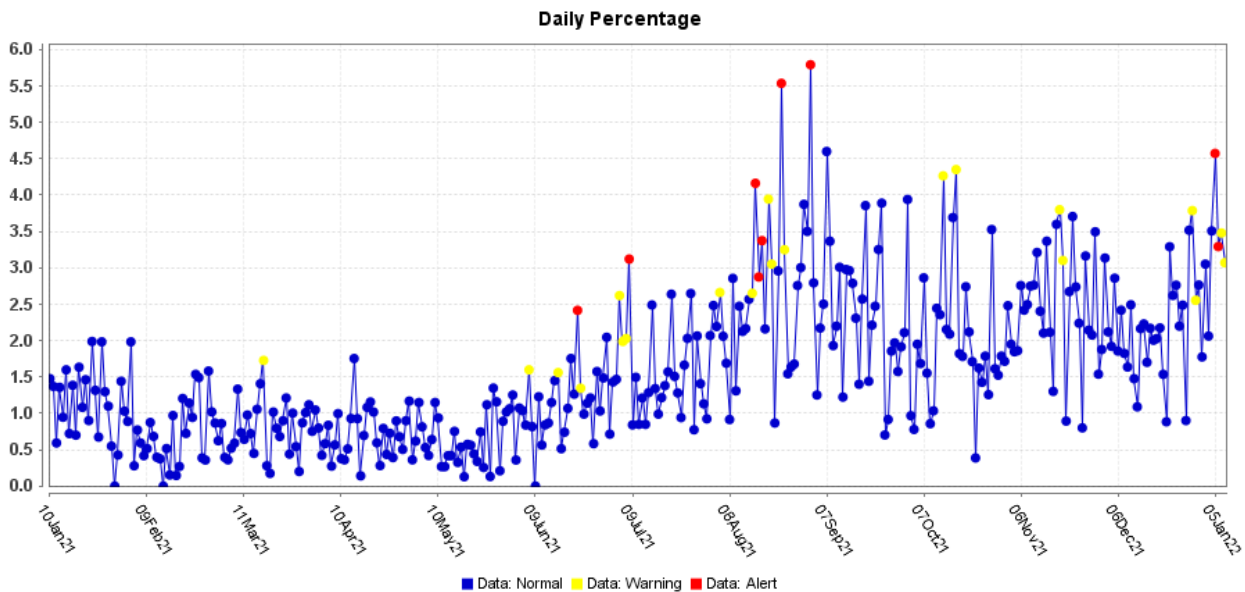
Data source for U.S. map for vaccination doses administered, as of 01/13/2022 6:00 AM ET. Posted: Thursday, January 13, 2022, 6:33 PM ET, CDC COVID Data Tracker [https://covid.cdc.gov/covid-data-tracker/#vaccinations\\_vacc-total-admin-rate-total](https://covid.cdc.gov/covid-data-tracker/#vaccinations_vacc-total-admin-rate-total)

- Moving forward, this figure will be replaced because the current scale changed to accommodate capturing booster doses, making this data less meaningful. A new method of illustrating fully vaccinated and boosted (up-to-date with vaccination) will be selected for portraying the vaccination rates in Washoe County.

## Surveillance Data

Percentage of persons indicating COVID-19 as the reason for visit to the Emergency Room (ER) is presented in Figure 9. The overlay below depicts COVID-19 in blue. Alerts appear as yellow and/or red dots. They indicate an unusually high percentage of COVID-19 visits according to ESSENCE algorithms.

**Figure 9. Percentage of ER Visits Due to COVID in the Last Year, Washoe County**



Data source: ESSENCE

## Glossary/Key Terms

### COVID-19 Case

Coronavirus Disease 2019 (COVID-19) cases counted in this document are confirmed or probable cases as determined by meeting confirmatory laboratory evidence, clinical criteria, and/or epidemiologic linkage as defined on the CDC website here:

<https://ndc.services.cdc.gov/case-definitions/coronavirus-disease-2019-2021/>

### COVID-19 Hospitalization

COVID-19 hospitalizations are counted as those hospitalized for greater than or equal to 24 hours and have a positive SARS-CoV-2 laboratory test.

### COVID-19 Death

- Decedents with a positive PCR COVID-19 lab report ( $\leq 30$  days from death or post-mortem)
- Decedents with a death certificate that lists a COVID-19-related term as a cause of death in Part I and have a history of a positive PCR COVID-19 lab report or COVID-related terms include names for COVID-19, such as SARS-CoV-2, coronavirus, coronavirus-19, etc.

- Decedents with a pending cause of death that had a positive PCR lab test within 30 days of death AND symptoms indicative of COVID-19 (per investigation or medical report)
- Decedents with a death certificate that does not specifically list a COVID-19-related term that had a positive PCR lab result  $\leq$  30 days before death and/or died within 30 days of COVID-19 symptom onset AND died in a manner of death deemed to be 'natural' on the death certificate

Exception: Deaths due to non-natural causes (e.g., accidental, intentional self-harm, homicide) should not be counted as a COVID-19 death even if the deceased had a confirmatory positive lab test within 30 days of death

## Links

### **WCHD COVID Dashboard**

<https://washoe.maps.arcgis.com/apps/dashboards/0db36fa8fa9c47758bc38210e4c23818>

### **WCHD website for COVID information and vaccine appointments**

<https://www.washoecounty.gov/health/index.php?choice=bdr>

**CDC COVID Data Tracker** <https://covid.cdc.gov/covid-data-tracker/>

**This COVID Report and others can be found at** <https://covid19washoe.com/daily-updates/washoe-county-covid-19-data-report/>