

COVID-19 Epidemiology Surveillance Program

MMWR Week #4 – 5, Jan. 23 – Feb. 5, 2022

Division of Epidemiology & Public Health Preparedness (EHP) 775-328-2447

Adam Vazquez, MPH, COVID-19 Epidemiologist AVazquez@washoecounty.gov

Lissa Callahan, COVID-19 Statistician LCallahan@washoecounty.gov

Weekly Summary*

Metrics	Week 4	Week 5
Number of New Cases	5,677	2,781
New Cases per 100,000 Population	1,177	577
Number of New Breakthrough Cases	1,462	584
Hospitalizations**	82	30
Deaths**	29	13

- Completed Vaccination Total through 02/06/2022: 292,144 persons

*For definition and specifics on metrics summarized, please refer to corresponding sections.

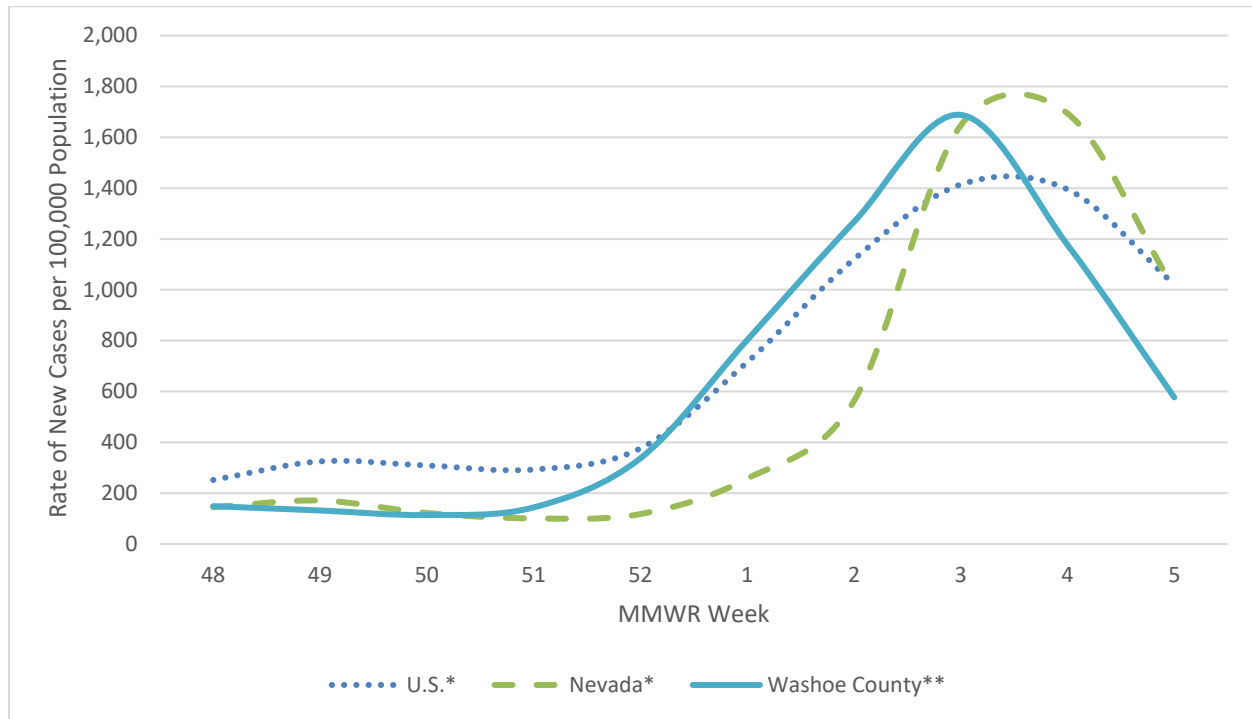
**Note: hospitalization and death totals for each week are subject to change as new reports are received on a daily basis and are often delayed, causing underreporting in more recent MMWR weeks.

Key message(s)

- The number of cases reported is decreasing after the spike caused by the Omicron variant.
- The data in this report are indicating the impact of the Omicron surge across the community.
- Table 3. COVID-19 Deaths by Age Group and Time Period* of Death, Washoe County, 2020-2022” was changed to display both 2020 deaths and 2021 deaths aggregate, and then by month in 2022.
- Figure 5 (previously Figure 6) was changed from “Number of Breakthrough Infections by Duration from Last Dose of Vaccination to Infection by MMWR Week” to “Number of Cases by Vaccination Status and MMWR Week” to provide a visualization of the difference in case counts between unvaccinated, vaccinated, and boosted individuals.
- As of the start of the 2022-year, a COVID-related death includes probable cases, if criteria are met.
 - See the “Glossary/Key Terms” section for details.

COVID-19 Case Information

Figure 1. Rate of New Cases Reported by MMWR Week, Washoe County, Nevada, and the United States, 2021-2022

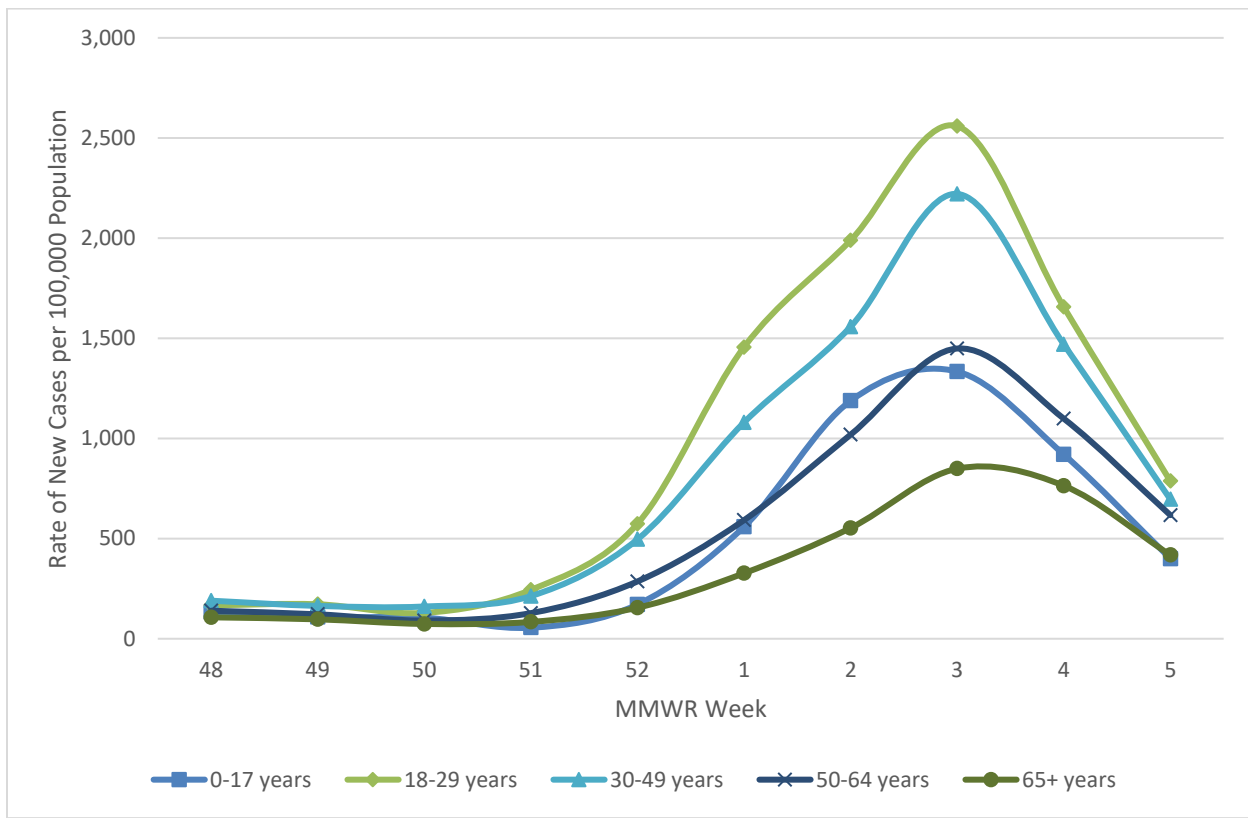


*Data source: <https://data.cdc.gov/Public-Health-Surveillance/United-States-COVID-19-County-Level-of-Community-T/8396-v7yb>

** Data source: Internal, WCHD

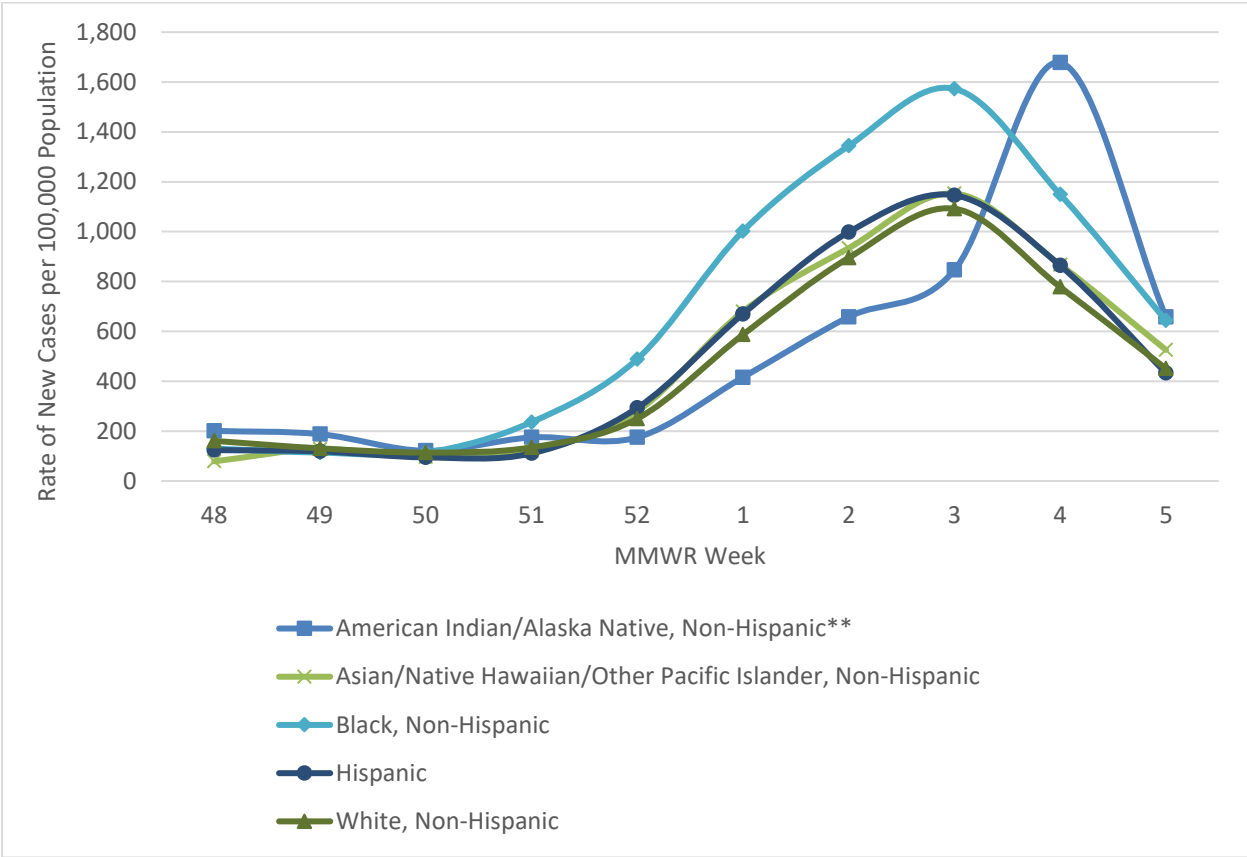
- In Washoe County, case counts decreased in MMWR weeks 4 and 5. During MMWR week 3 there were 1,688 new cases per 100,000 population. Case counts decreased to 1,177 and 577 new cases per 100,000 population in MMWR week 4 and week 5, respectively
- In Nevada, case counts increased to 1,694 new cases per 100,000 population in MMWR week 4 and then decreased to 1,001 new cases per 100,000 population in MMWR week 5.
- In the United States, case counts also decreased. During MMWR week 4 and week 5 there were 1,395 and 1,021 new cases per 100,000 population, respectively, which dropped from 1,414 new cases per 100,000 population in week 3.

Figure 2. Rate of New Cases Reported by Age Group and MMWR Week, Washoe County, 2021-2022



- From MMWR week 3 through week 5, there was a decrease in cases per 100,000 population across all age groups.
- The age group with highest case rate per 100,000 population during week 5 was the 18-29 age group with 787 new cases per 100,000 population. This was a decrease from 1,989 new cases per 100,000 population in week 3.
- The next highest case rate during week 5 was the 30-49 age group, with 696 new cases per 100,000 population.
- The 0-17 age group had the lowest number of new cases per 100,000 during week 5 with 400, which decreased from a 10-week high of 1,334 new cases per 100,000 in week 3.

Figure 3. Rate of New Cases Reported by Race/Ethnicity* and MMWR Week, Washoe County, 2021-2022



*Note: From MMWR week 48 to week 5, 26.5% of cases were recorded as “Declined to answer”, “Multiple”, “Other”, “Not Asked”, or “Unknown” and rates per 100,000 population are unable to be calculated for those categories.

**Note: Tribal populations may be underrepresented as the data source does not include Indian Health Services (IHS) data.

- From MMWR week 51 through 3, those who identified as Black, Non-Hispanic had the highest rate of new cases per 100,000 population.
- The rate of new cases per 100,000 among those identifying as Black, Non-Hispanic was highest in week 3, with 1,573 cases per 100,000 population.
- During weeks 4 and 5, those who identified as American Indian/Alaska Native, Non-Hispanic had the highest rate of new cases per 100,000 population at 1,678 and 658 new cases per 100,000 population, respectively.

Hospitalizations, ICU Status, & Deaths

COVID-19 hospitalizations are defined as those hospitalized for greater than or equal to 24 hours and have a positive SARS-CoV-2 laboratory test.

COVID-19 deaths are defined as decedents who have had a positive PCR COVID-19 lab report \leq 30 days from death or post-mortem. This includes deaths attributed to COVID-19 related illnesses and, if not specifically listed on death certificate, a positive PCR COVID-19 lab, dependent on the manner of death. See full definition in Glossary/Key Terms at the end of the report.

Table 1. Number and Percent of New Cases Reported by Age and Hospitalization Status, MMWR Weeks* 4 and 5, Washoe County, 2021-2022

			Age Group				
			0-17	18-29	30-49	50-64	65+
MMWR Week	4	Total Cases	992	1332	1798	956	598
		% Hospitalized	1.1%	0.3%	0.7%	2.5%	5.2%
	5	Total Cases	432	633	851	537	327
		% Hospitalized	1.2%	0.6%	0.1%	1.3%	4.0%

* Note: hospitalization totals for each week are subject to change as new reports are received on a daily basis and are often delayed, causing underreporting in more recent MMWR weeks.

- During MMWR week 4 and week 5 the age groups with the highest percentage of total cases resulting in hospitalization were those aged 50-64 and 65+ years of age.
- In Washoe County, during MMWR week 4 and week 5, 2.5% and 1.3% of the cases in the 50-64 age group were hospitalized, respectively.
- In Washoe County, during MMWR week 4 and week 5, 5.2% and 4.0% of the cases in the 65+ age group were hospitalized, respectively.

Table 2. Number and Percentage of Cases Reported by Hospitalization and ICU Status by MMWR Week*, Washoe County, 2021-2022

MMWR Week	New Cases	Hospitalized		ICU	
		#	%	#	%
48	712	29	4.1	6	0.8
49	631	41	6.5	5	0.8
50	546	22	4.0	3	0.5
51	683	26	3.8	7	1.0
52	1839	43	2.3	3	0.2
1	3867	66	1.7	9	0.2
2	6109	83	1.4	18	0.3
3	8141	123	1.5	23	0.3
4	5677	82	1.4	11	0.2
5	2781	30	1.1	8	0.3

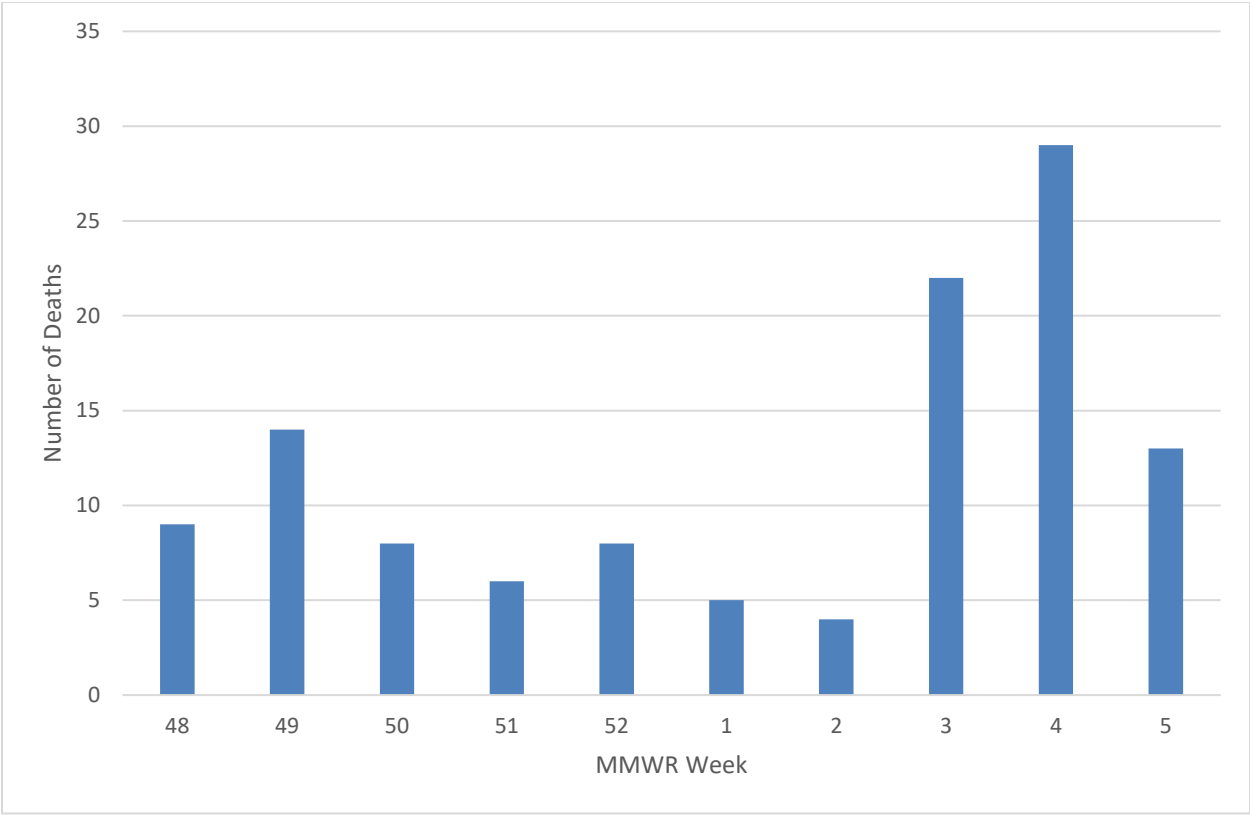
*Note: hospitalization and ICU totals for each week are subject to change as new reports are received on a daily basis and are often delayed, causing underreporting in more recent MMWR weeks.

Table 3. COVID-19 Deaths by Age Group and Time Period* of Death, Washoe County, 2020-2022

Time Period	Total Deaths	0-17 years	18-29 years	30-49 years	50-64 years	65+ years
2020 March - December	507	0	2	32	85	387
2021 Total	520	0	5	58	119	338
2022 January	70	0	1	3	11	55

*Note: death totals are subject to change as new reports are received on a daily basis and are often delayed, causing underreporting in more recent months.

Figure 4. Number of Deaths Occurring by MMWR Week*, Washoe County, 2021-2022

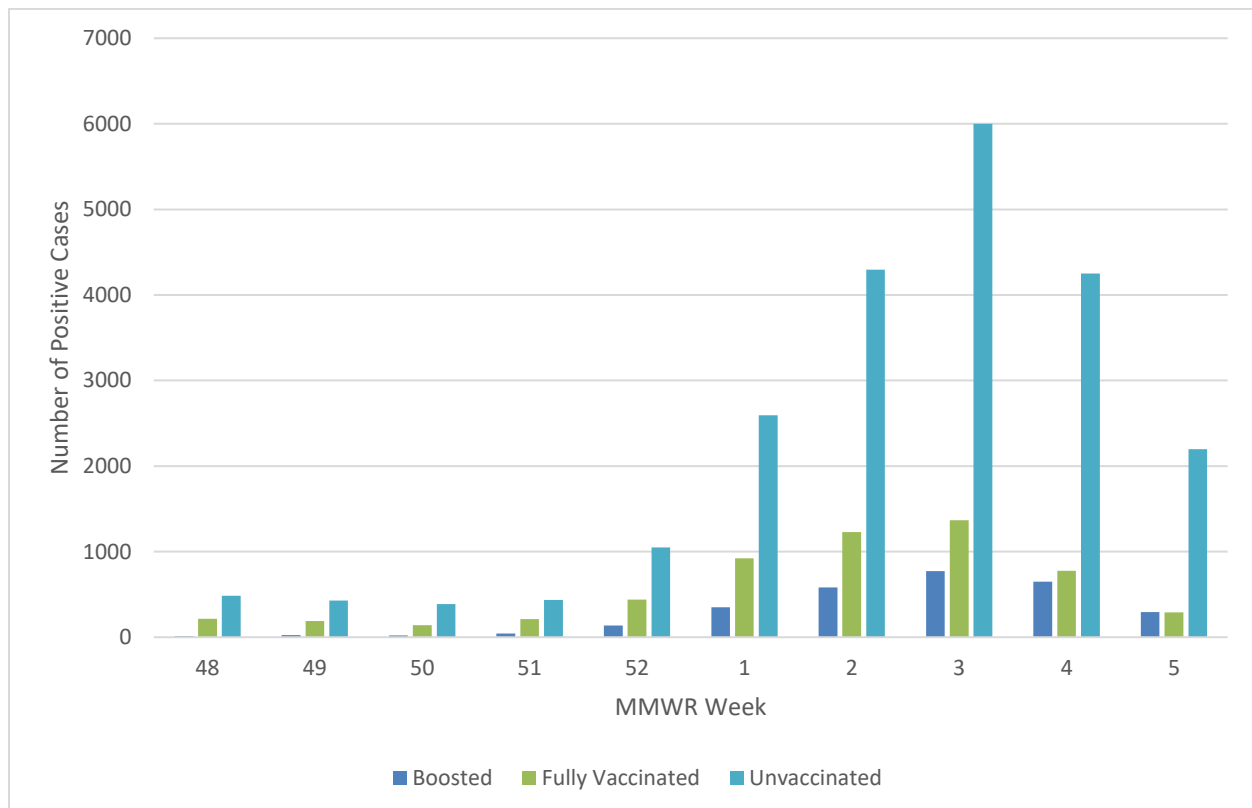


*Note: death totals for each week are subject to change as new reports are received on a daily basis and are often delayed, causing underreporting in more recent MMWR weeks.

Breakthrough Cases

A breakthrough COVID-19 case is defined as a Washoe County resident who has SARS-CoV-2 PCR or antigen detected through laboratory testing 14 or more days after completing the primary series of an FDA-authorized COVID-19 vaccine.

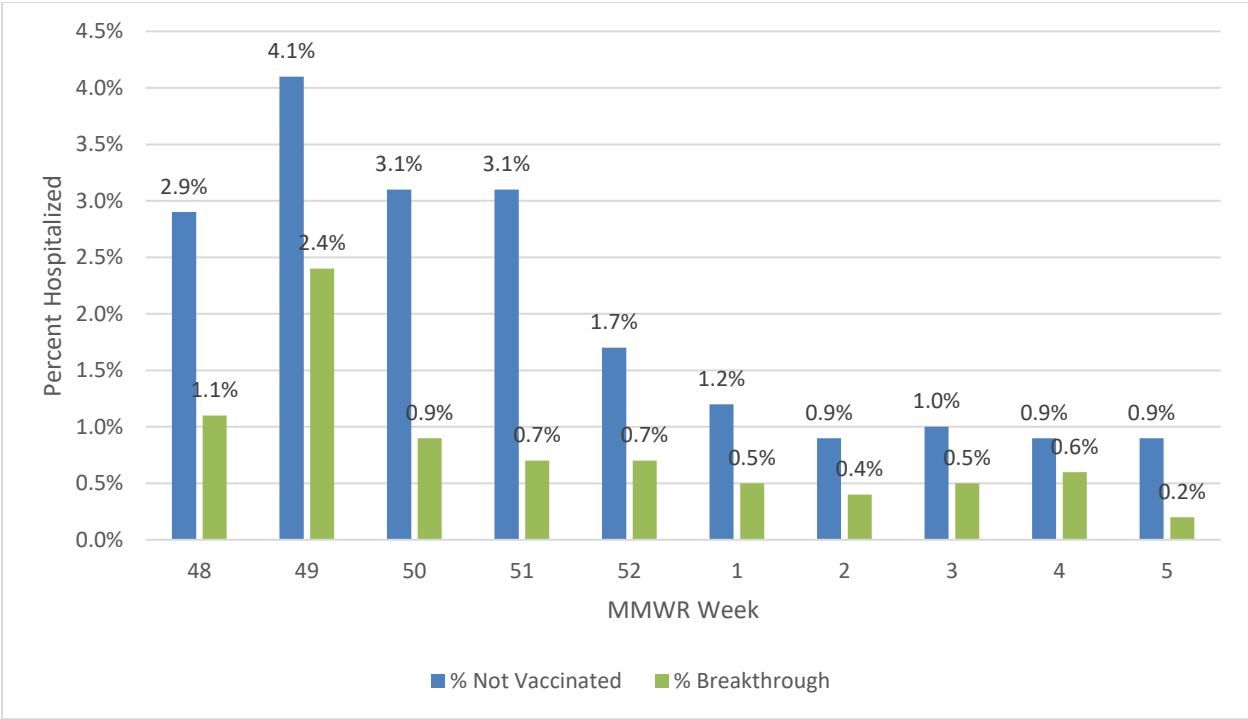
Figure 5. Number of Cases by Vaccination Status and MMWR Week*, Washoe County, 2021-2022



*Note: vaccination data for each week are subject to change as vaccinations are updated on a daily basis and are often on a delay internally, causing underreporting in more recent MMWR weeks.

- From MMWR week 48 through week 5, there was a higher number of cases that were Unvaccinated compared to number of cases that were Fully Vaccinated or Boosted.
- All 3 groups rose in case count from week 50 through week 3 and decreased from week 3 through week 5.
- The highest case count in the Unvaccinated group was 6,000 cases in week 3, which contributed to 73.7% of all cases reported during week 3.
- During week 5, the Fully Vaccinated group represented 10.4% (n = 289) of newly reported cases and the Boosted group made up 10.6% (n = 295) of all cases in week 5. Individuals who were Unvaccinated represented 79.0% (n = 2,197) of all cases reported during week 5.

Figure 6. Percentage of Reported Cases Hospitalized by Vaccination Status and MMWR Week*, Washoe County, 2021-2022



*Note: hospitalization totals for each week are subject to change as new reports are received on a daily basis and are often delayed, causing underreporting in more recent MMWR weeks.

- From MMWR week 48 through week 5, there was a higher percentage of hospitalized unvaccinated cases compared to vaccinated cases.
- This trend has remained consistent for the duration of this report publication.

Table 4. Number and Percentage of Cases Reporting Hospitalization and ICU by Vaccination Status and MMWR Week*, Washoe County, 2021-2022

All Cases				Unvaccinated Cases				Breakthrough Cases			
MMWR Week	New Cases	Total Hospitalized	Total ICU	Hospitalized		ICU		Hospitalized		ICU	
				#	% ^a	#	% ^b	#	% ^a	#	% ^b
48	712	29	6	21	72.4	5	83.3	8	27.6	1	16.7
49	631	41	5	26	63.4	4	80.0	15	36.6	1	20.0
50	546	22	3	17	77.3	3	100.0	5	22.7	0	0.0
51	683	26	7	21	80.8	6	85.7	5	19.2	1	14.3
52	1,839	43	3	31	72.1	3	100.0	12	27.9	0	0.0
1	3,867	66	9	47	71.2	7	77.8	19	28.8	2	22.2
2	6,109	83	18	58	69.9	11	61.1	25	30.1	7	38.9
3	8,141	123	23	83	67.5	16	69.6	40	32.5	7	30.4
4	5,677	82	11	50	61.0	5	45.5	32	39.0	6	54.5
5	2,781	30	8	24	80.0	5	62.5	6	20.0	3	37.5

*Note: hospitalization and ICU totals for each week are subject to change as new reports are received on a daily basis and are often delayed, causing underreporting in more recent MMWR weeks.

^a Calculated as the percentage of Total Hospitalizations by vaccination status for the MMWR week.

^b Calculated as the percentage of Total ICU by vaccination status for the MMWR week.

Vaccinations

Current dose and vaccination totals and percentages for Washoe County residents; data as of 02/07/2022.

150,923 doses reported as administered per 100,000 population (to date)

68,897 (68.9% of population) vaccinations reported as initiated per 100,000 population

60,592 (60.6% of population) vaccinations reported as completed per 100,000 population

74.4% of population 5 years and older initiated vaccination

65.4% of population 5 years and older completed vaccination

Figure 7. Percentage of Population Fully Vaccinated, Washoe County, 2021-2022

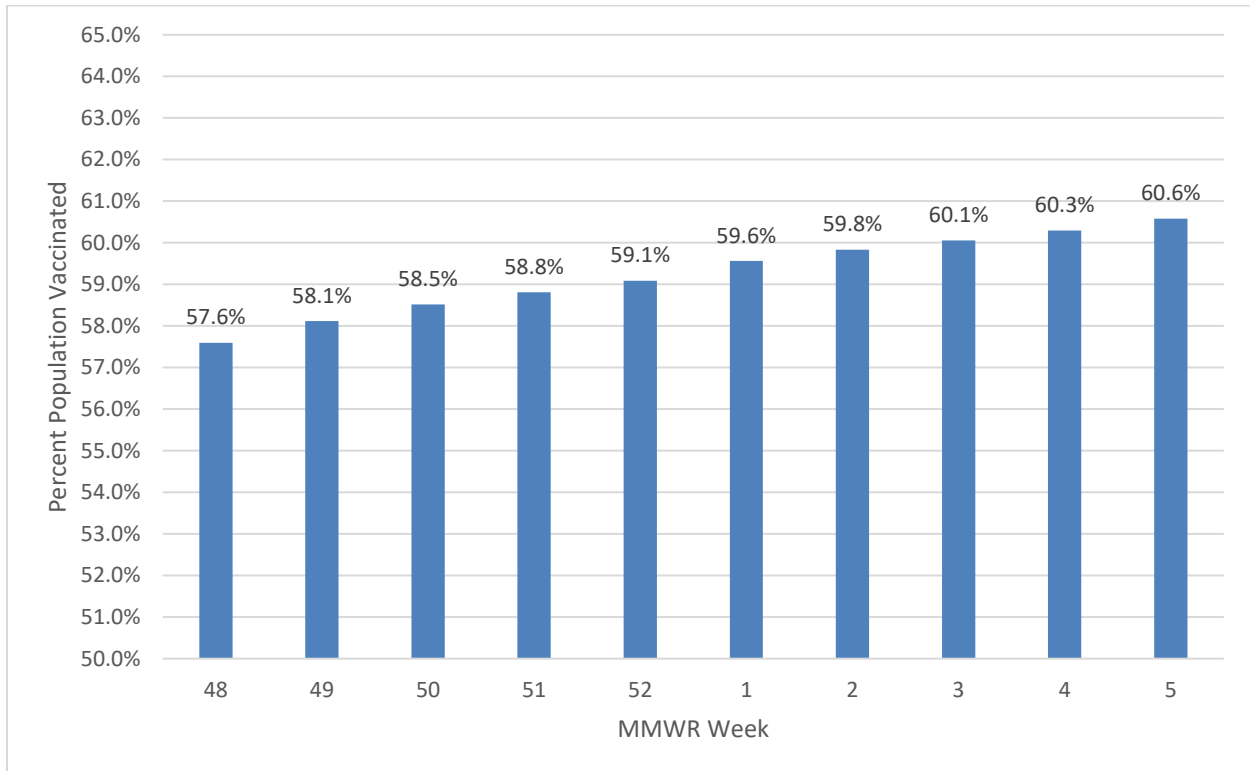


Table 5. Percentage of Population Vaccinated by Sex, Age Group, and Race/Ethnicity*, Washoe County, 2021-2022

Select Demographics		% Population Fully Vaccinated
Sex	Female	64.4%
	Male	58.4%
Age Group	0-17 years	25.8%
	18-29 years	61.8%
	30-49 years	66.2%
	50-64 years	77.7%
	65+ years	84.2%
Race / Ethnicity*	American Indian/Alaska Native, Non-Hispanic**	30.6%
	Asian/Native Hawaiian/Other Pacific Islander, Non-Hispanic	44.5%
	Black, Non-Hispanic	35.4%
	Hispanic	47.0%
	White, Non-Hispanic	48.5%

*Note: 23.1% of the total vaccinated population were recorded as “Unknown” or “Other” and therefore population percentages are unable to be calculated for those categories. Additionally, 1.3% of the total Washoe County population had missing demographic information and therefore were not included in the overall calculations.

**Note: Tribal populations may be underrepresented as the data source does not include Indian Health Services (IHS) data, which may contain vaccination records for tribal members and those who access services through IHS clinics.

- In Washoe County, the 65+ age group has the highest percent vaccinated, with 84.2% of the 65+ population, followed by the 50-64 age group with 77.7% of individuals vaccinated.
- In Washoe County, those who identify as White, Non-Hispanic have the highest percent vaccinated (48.5%), followed by Hispanic (47.0%) and Asian/Native Hawaiian/Other Pacific Islander, Non-Hispanic (44.5%).

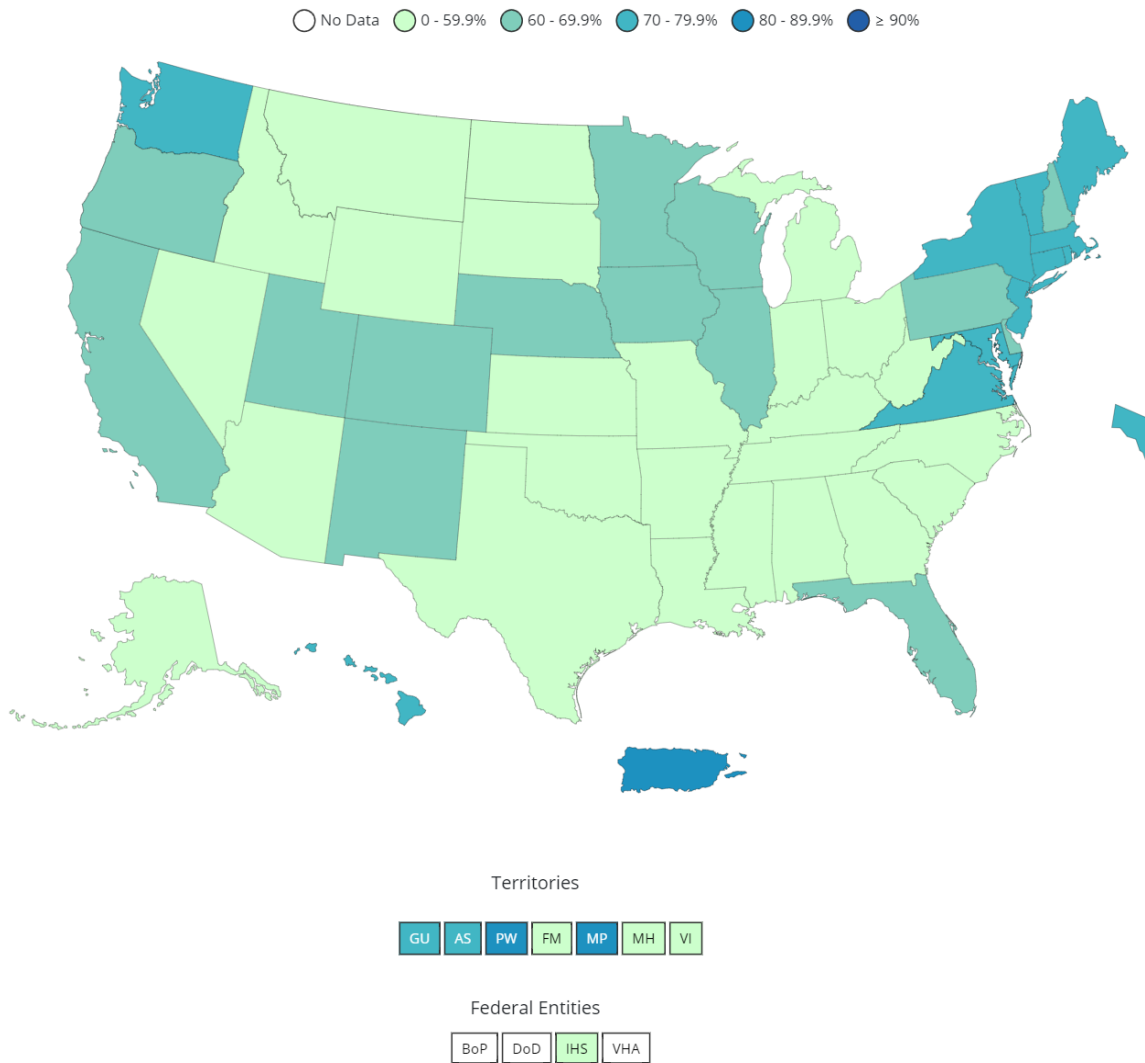
Table 6. Percentage of Total Population Fully Vaccinated and Boosted by Washoe County, Nevada, and the United States, 2021-2022

	% Population Fully Vaccinated	% Population Boosted
United States*	64.2%	27.2%
Nevada*	58.9%	21.3%
Washoe County**	60.6%	25.9%

* Data Source: https://covid.cdc.gov/covid-data-tracker/#vaccinations_vacc-people-fully-percent-total as of 2/8/2022.

** Data Source: WebIZ as of 2/7/2022.

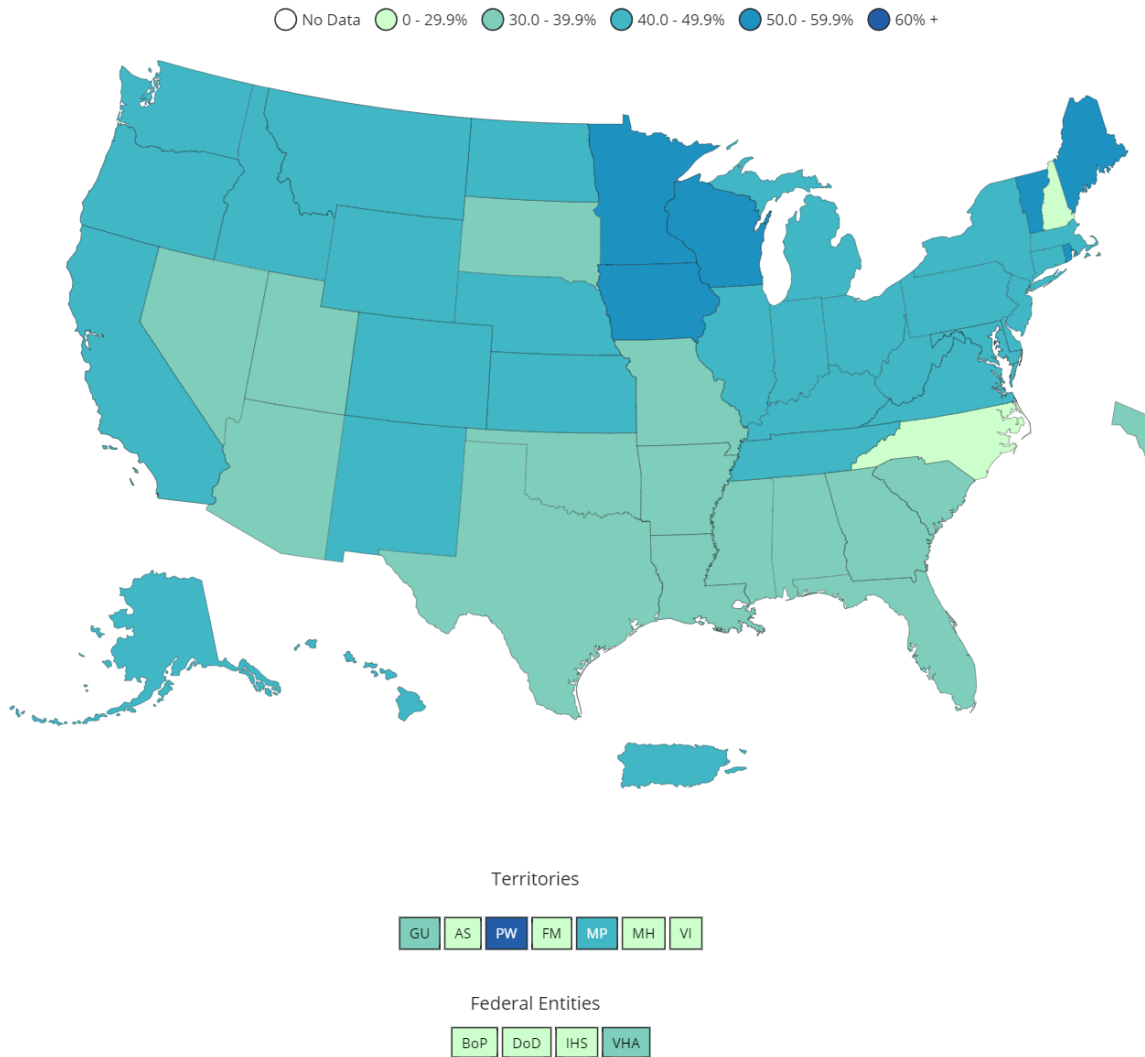
Figure 8. Percent of People Fully Vaccinated Reported to the CDC by State/Territory and for Select Federal Entities for the Total Population



Data for Federal Entities are presented here and are also incorporated into the respective jurisdictional totals

Data source for U.S. map for fully vaccinated people reported to the CDC, as of 2/8/2022 6:00 AM ET. Posted: Tuesday, February 8, 2022, 2:37 PM ET, CDC COVID Data Tracker https://covid.cdc.gov/covid-data-tracker/#vaccinations_vacc-people-fully-percent-total

Figure 9. Percent of Fully Vaccinated People with a Booster Dose Reported to the CDC by State/Territory or Select Federal Entities for the Total Population



Data for Federal Entities are presented here and are also incorporated into the respective jurisdictional totals

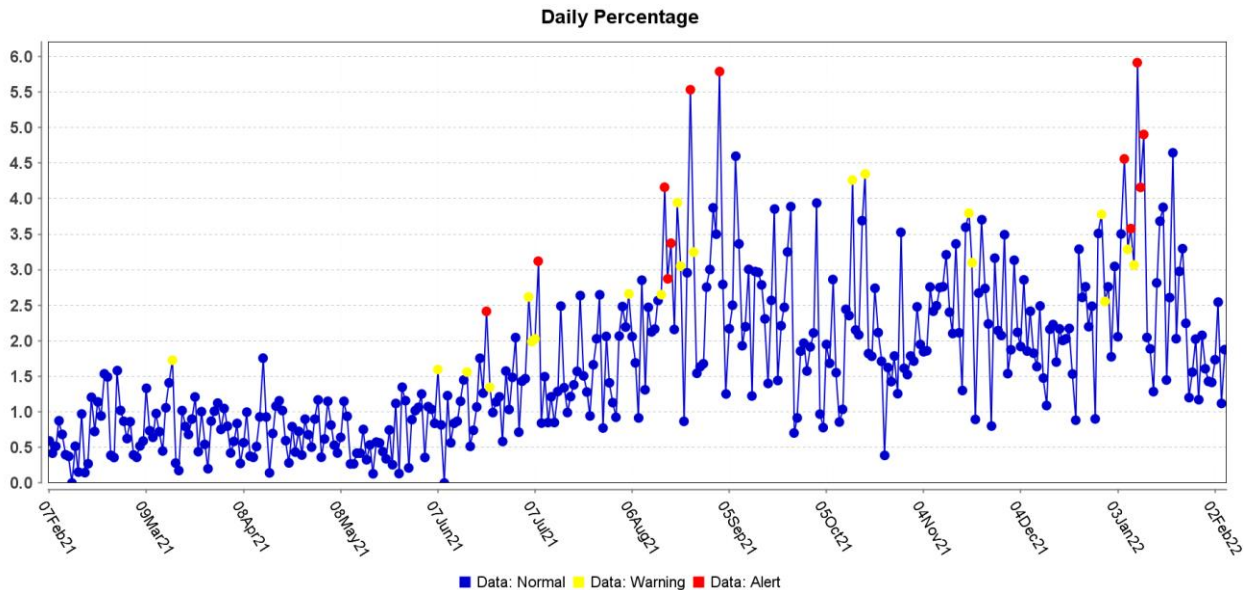
Data source for U.S. map for fully vaccinated people with a booster dose reported to the CDC, as of 2/8/2022 6:00 AM ET. Posted: Tuesday, February 8, 2022, 2:37 PM ET, CDC COVID Data Tracker https://covid.cdc.gov/covid-data-tracker/#vaccinations_vacc-people-additional-dose-totalpop

Note: Percent of fully vaccinated people with a booster dose is a different metric than percentage of total population who received a booster dose provided in Table 6.

Surveillance Data

Percentage of persons indicating COVID-19 as the reason for visit to the Emergency Room (ER) is presented in Figure 10. The overlay below depicts COVID-19 in blue. Alerts appear as yellow and/or red dots. They indicate an unusually high percentage of COVID-19 visits according to ESSENCE algorithms.

Figure 10. Percentage of ER Visits Due to COVID in the Last Year, Washoe County



Data source: ESSENCE

Glossary/Key Terms

COVID-19 Case

Coronavirus Disease 2019 (COVID-19) cases counted in this document are confirmed or probable cases as determined by meeting confirmatory laboratory evidence, clinical criteria, and/or epidemiologic linkage as defined on the CDC website here:

<https://ndc.services.cdc.gov/case-definitions/coronavirus-disease-2019-2021/>

COVID-19 Hospitalization

COVID-19 hospitalizations are counted as those hospitalized for greater than or equal to 24 hours and have a positive SARS-CoV-2 laboratory test.

COVID-19 Death

As of January 1, 2022, both Confirmed and Probable COVID-19-associated deaths are included in the count.

- (https://cdn.ymaws.com/www.cste.org/resource/resmgr/pdfs/pdfs2/20211222_interim-guidance.pdf)

Criteria for confirmed case death:

- The case meets the confirmed COVID-19 surveillance case definition, AND at least ONE of the following criteria is met:

- A case investigation determined that COVID-19 was the cause of death or contributed to the death.
- The death certificate indicates COVID-19 or an equivalent term as one of the causes of death, regardless of the time elapsed since specimen collection of the confirmatory laboratory test used to define the case.
- The death occurred within (and including) 30 days of specimen collection for the confirmatory laboratory test used to define the case and was due to natural causes (e.g., the Manner of Death is coded as “natural” on the death certificate.)

Criteria for probable case death:

- The case meets the probable COVID-19 case definition AND a case investigation determined that COVID-19 was the cause of death or contributed to the death; **OR**
- The case meets the probable COVID-19 surveillance case definition based on presumptive laboratory evidence AND death occurred within (and including) 30 days of specimen collection and was due to natural causes (e.g., the Manner of Death is coded as “natural” on the death certificate.); **OR**
- The case meets the probable COVID-19 surveillance case definition based on epidemiologic linkage and meeting clinical criteria, AND death occurred within (and including) 30 days of symptom onset and was due to natural causes (e.g., the Manner of Death is coded as “natural” on the death certificate.); **OR**
- The case meets the probable COVID-19 surveillance case definition based only on vital records criteria (i.e. a death certificate that lists COVID-19 disease or SARS-CoV-2 or an equivalent term as an underlying cause of death or a significant condition contributing to death and there is no confirmatory or presumptive laboratory evidence.)

Links

WCHD COVID Dashboard

<https://washoe.maps.arcgis.com/apps/dashboards/0db36fa8fa9c47758bc38210e4c23818>

WCHD website for COVID information and vaccine appointments

<https://www.washoecounty.gov/health/index.php?choice=bdr>

CDC COVID Data Tracker <https://covid.cdc.gov/covid-data-tracker/>

Nevada State Public Health Laboratory created a new COVID-19 variant web page

<https://www.nvsarscov2variant.com/variants>

Department of Health and Human Services Nevada Division of Public and Behavioral Health (DPBH) Technical Bulletins

https://dphh.nv.gov/Resources/Technical_Bulletins-New/

WCHD COVID reports <https://covid19washoe.com/daily-updates/washoe-county-covid-19-data-report/>