

**COVID-19 Epidemiology Surveillance Program**  
**MMWR Week #10 – 11, Mar. 6 – Mar. 19, 2022**

Division of Epidemiology & Public Health Preparedness (EHPH) 775-328-2447

Adam Vazquez, MPH, COVID-19 Epidemiologist [AVazquez@washoecounty.gov](mailto:AVazquez@washoecounty.gov)

Lissa Callahan, COVID-19 Statistician [LCallahan@washoecounty.gov](mailto:LCallahan@washoecounty.gov)

**Weekly Summary\***

Metrics	Week 10	Week 11
Number of New Cases	199	97
New Cases per 100,000 Population	41	20
Number of New Breakthrough Cases	51	37
Hospitalizations**	20	5
Deaths**	5	1

- Completed Vaccination Total through 03/21/2022: 296,158 persons

\*For definition and specifics on metrics summarized, please refer to corresponding sections.

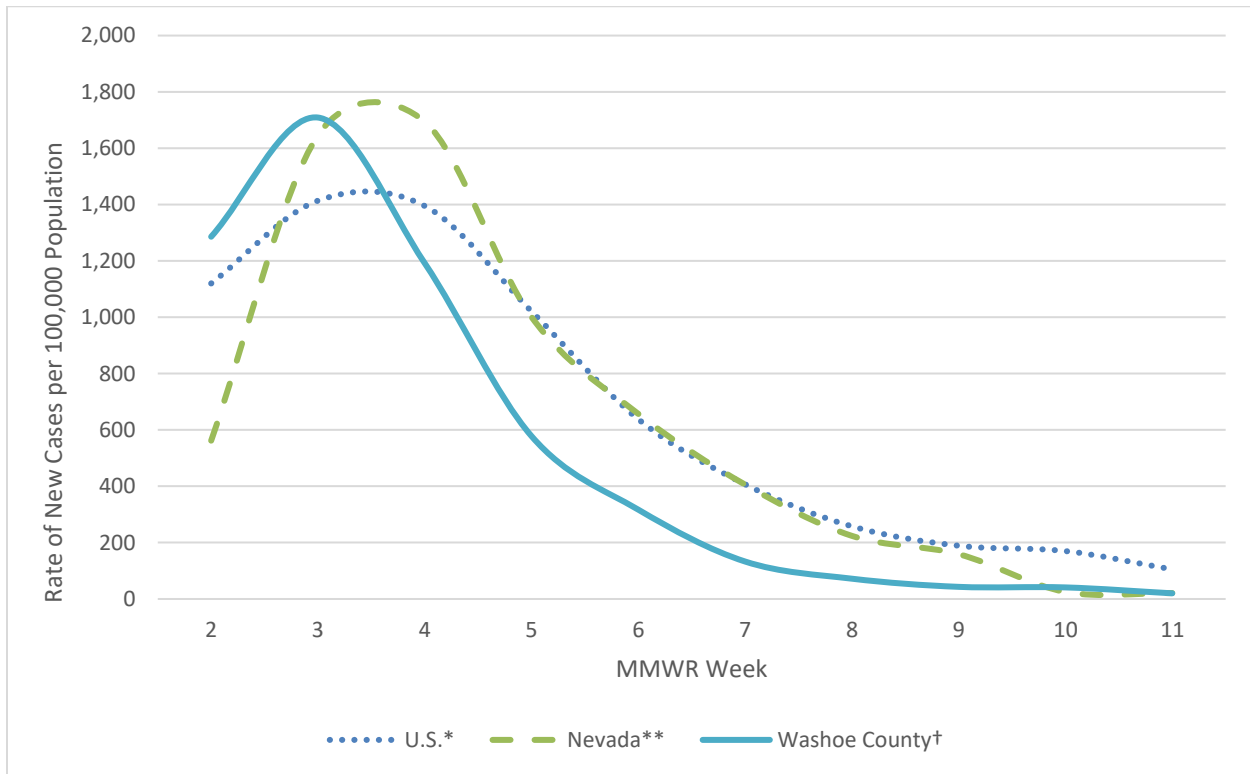
\*\*Note: hospitalization and death totals for each week are subject to change as new reports are received on a daily basis and are often delayed, causing underreporting in more recent MMWR weeks.

Key message(s)

- The number of cases reported in Washoe County each week have continued to decline.
- Persons who are not vaccinated continue to represent the majority of new cases.
- Only 27.7% of Washoe County’s population has received a booster dose.

## COVID-19 Case Information

**Figure 1. Rate of New Cases Reported by MMWR Week, Washoe County, Nevada, and the United States, 2022**



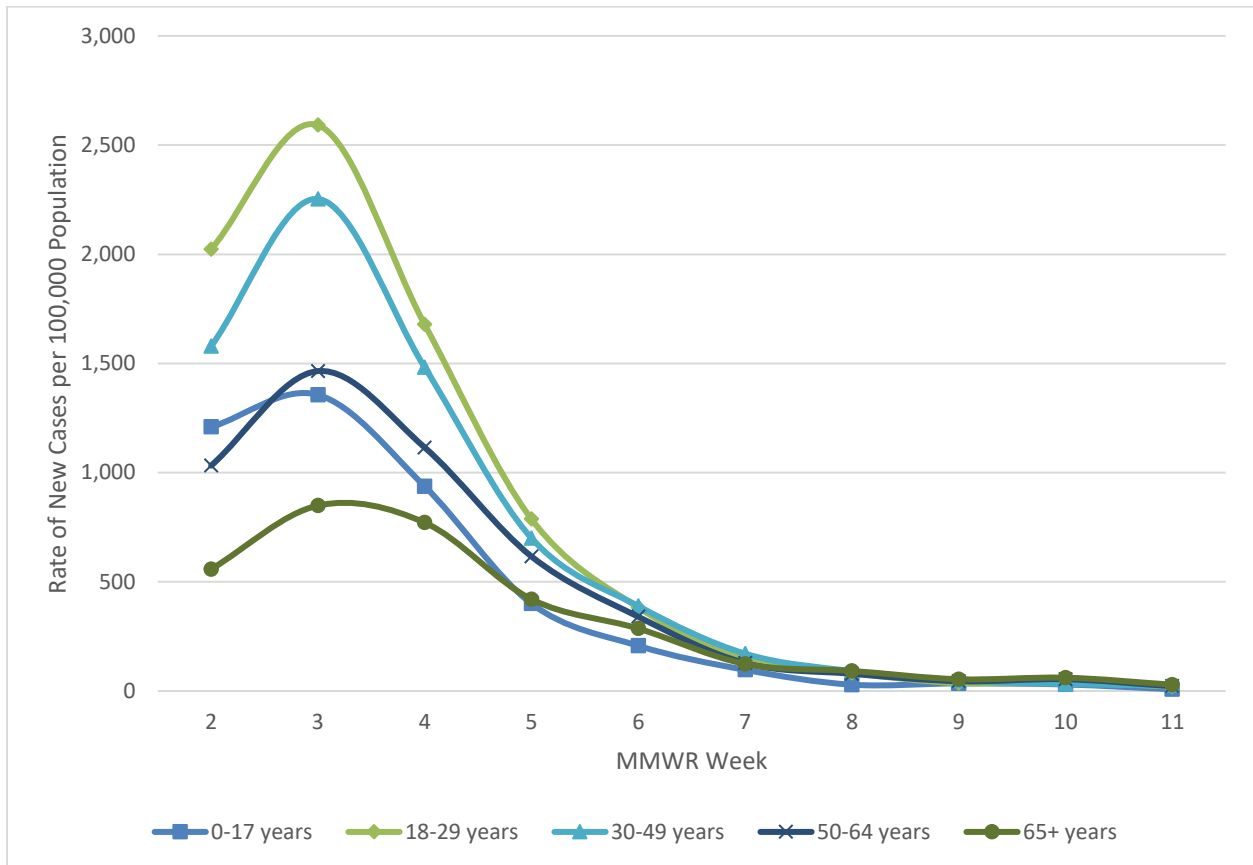
\*Data source: <https://data.cdc.gov/Public-Health-Surveillance/United-States-COVID-19-County-Level-of-Community-T/8396-v7yb>

\*\*Data source for weeks 2 through 9: <https://data.cdc.gov/Public-Health-Surveillance/United-States-COVID-19-County-Level-of-Community-T/8396-v7yb>. Data Source for weeks 10 and 11: <https://nvhealthresponse.nv.gov/#covid-data-tracker>.

†Data source: Internal, WCHD

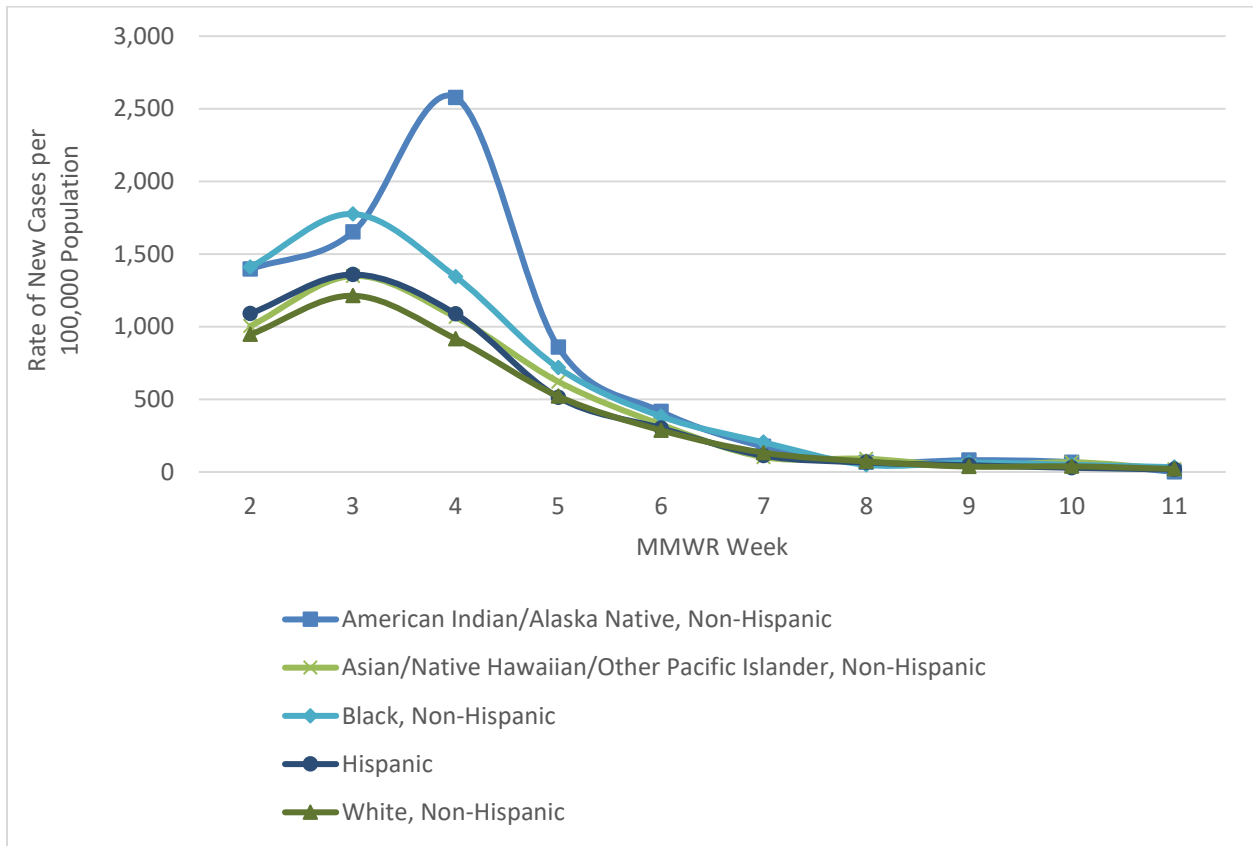
- In Washoe County, case counts decreased from 1,709 new cases per 100,000 population in MMWR week 3 to 41 and 20 new cases per 100,000 population in MMWR week 10 and week 11, respectively.
- In Nevada, case counts increased to a peak of 1,694 new cases per 100,000 population in MMWR week 4, but as of MMWR week 11, decreased to 21 new cases per 100,000 population.
- In the United States, case counts also decreased. During MMWR week 10 and week 11 there were 170 and 105 new cases per 100,000 population, respectively; a decline from the peak of 1,414 new cases per 100,000 population during week 3.

**Figure 2. Rate of New Cases Reported by Age Group and MMWR Week, Washoe County, 2022**



- From MMWR week 3 through week 11, there was an overall decrease in cases across all age groups.
- The age group with highest case rate during week 11 was the 65+ age group with 29 new cases per 100,000 population. This was a decrease from a peak of 849 new cases per 100,000 population in week 3.
- The 0-17 age group had the lowest number of new cases per 100,000 during week 11 with 8, which decreased from a 10-week high of 1,356 new cases per 100,000 in week 3.

**Figure 3. Rate of New Cases Reported by Race/Ethnicity\* and MMWR Week, Washoe County, 2022**



\*Note: From MMWR week 2 to week 11, 18.9% of cases were recorded as “Declined to answer”, “Multiple”, “Other”, “Not Asked”, or “Unknown” and rates per 100,000 population are unable to be calculated for those categories.

- During weeks 4 and 5, those who identified as American Indian/Alaska Native, Non-Hispanic had the highest rate of new cases per 100,000 population at 2,578 and 859 new cases per 100,000 population, respectively.
- During MMWR week 11, the new cases reported across all race/ethnicities ranged from 0 cases per 100,000 population (American Indian/Alaska Native, Non-Hispanic) to 33 cases per 100,000 population (Black, Non-Hispanic).

## Hospitalizations, ICU Status, & Deaths

COVID-19 hospitalizations are defined as those hospitalized for greater than or equal to 24 hours and have a positive SARS-CoV-2 laboratory test.

COVID-19 deaths are defined as decedents who have had a positive PCR COVID-19 lab report  $\leq$  30 days from death or post-mortem. This includes deaths attributed to COVID-19 related illnesses and, if not specifically listed on death certificate, a positive PCR COVID-19 lab, dependent on the manner of death. See full definition in Glossary/Key Terms at the end of the report.

**Table 1. Number and Percent of New Cases Reported by Age and Hospitalization Status, MMWR Weeks\* 10 and 11, Washoe County, 2022**

			Age Group				
			0-17	18-29	30-49	50-64	65+
MMWR Week	10	Total Cases	32	33	39	47	48
		% Hospitalized	6.3%	0.0%	2.6%	12.8%	22.9%
	11	Total Cases	9	16	30	19	23
		% Hospitalized	0.0%	6.3%	0.0%	10.5%	8.7%

\* Note: hospitalization totals for each week are subject to change as new reports are received on a daily basis and are often delayed, causing underreporting in more recent MMWR weeks.

- During MMWR week 10 and week 11 the age groups with the highest percentage of total cases resulting in hospitalization were those aged 50-64 and 65+ years of age.

**Table 2. Number and Percentage of Cases Reported by Hospitalization and ICU Status by MMWR Week\*, Washoe County, 2022**

MMWR Week	New Cases	Hospitalized		ICU	
		#	%	#	%
2	6,199	86	1.4	21	0.3
3	8,242	133	1.6	28	0.3
4	5,749	103	1.8	16	0.3
5	2,786	58	2.1	15	0.5
6	1,526	67	4.4	7	0.5
7	641	30	4.7	3	0.5
8	349	18	5.2	3	0.9
9	207	17	8.2	5	2.4
10	199	20	10.1	2	1.0
11	97	5	5.2	0	0.0

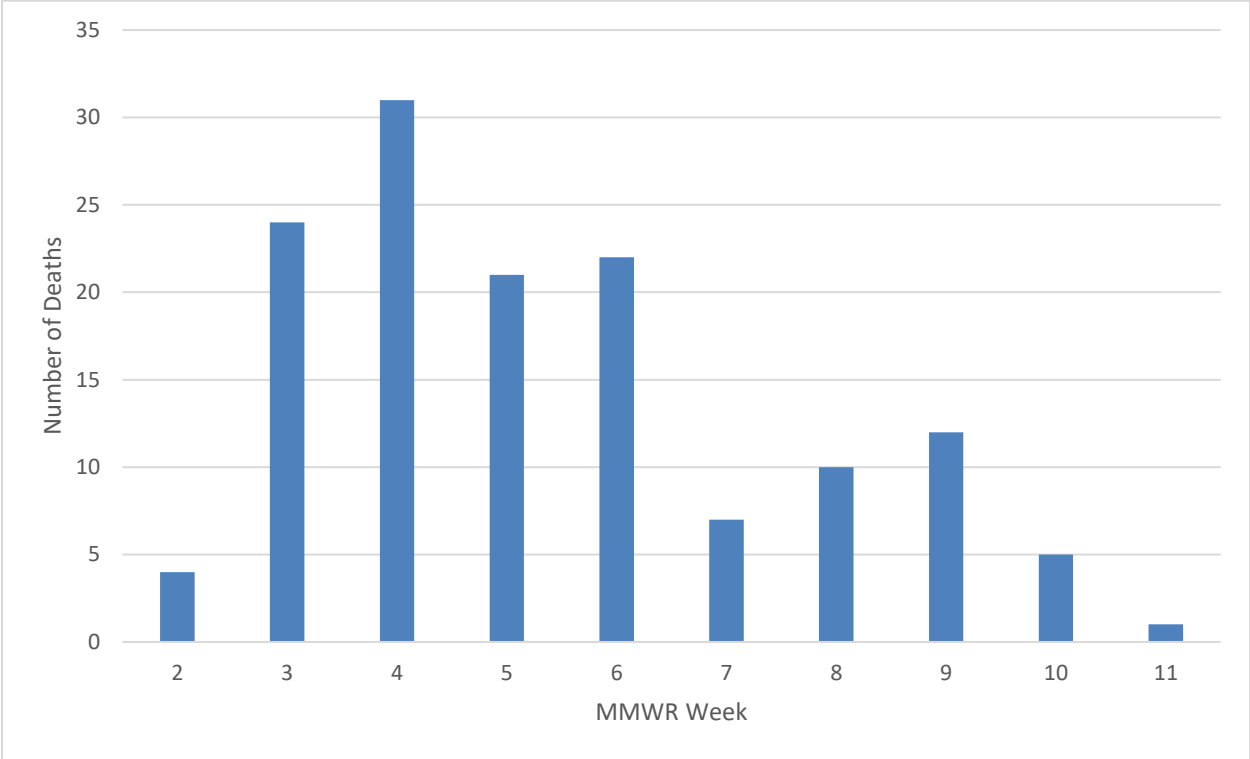
\*Note: hospitalization and ICU totals for each week are subject to change as new reports are received on a daily basis and are often delayed, causing underreporting in more recent MMWR weeks.

**Table 3. COVID-19 Deaths by Age Group and Time Period\* of Death, Washoe County, 2020-2022**

Time Period	Total Deaths	0-17 years	18-29 years	30-49 years	50-64 years	65+ years
2020 March - December	508	0	2	32	85	388
2021 Total	523	0	6	58	119	340
2022 January	75	0	1	5	11	58
2022 February	56	0	1	4	15	36

\*Note: death totals are subject to change as new reports are received on a daily basis and are often delayed, causing underreporting in more recent months.

**Figure 4. Number of Deaths Occurring by MMWR Week\*, Washoe County, 2022**

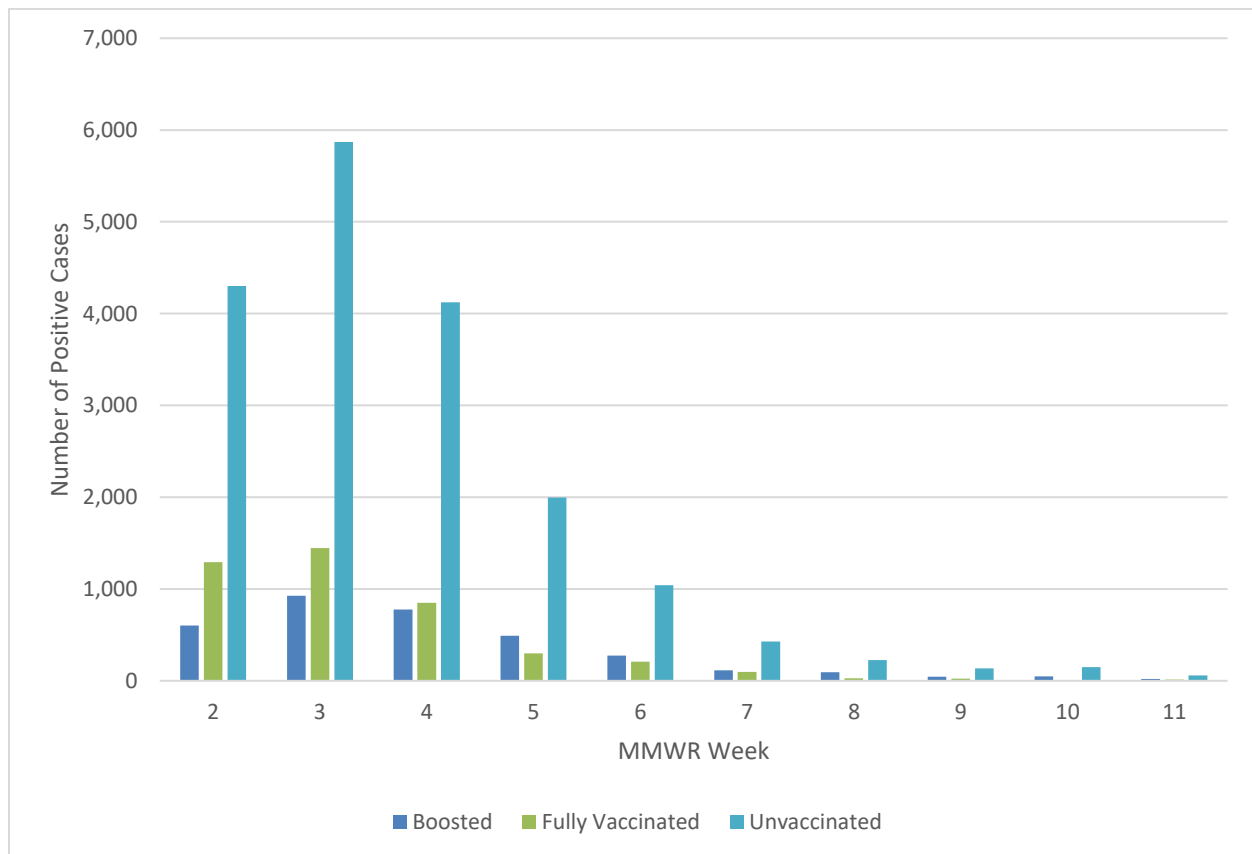


\*Note: death totals for each week are subject to change as new reports are received on a daily basis and are often delayed, causing underreporting in more recent MMWR weeks.

## Breakthrough Cases

A breakthrough COVID-19 case is defined as a Washoe County resident who has SARS-CoV-2 PCR or antigen detected through laboratory testing 14 or more days after completing the primary series of an FDA-authorized COVID-19 vaccine.

**Figure 5. Number of Cases by Vaccination Status and MMWR Week\*, Washoe County, 2022**



\*Note: vaccination data for each week are subject to change as vaccinations are updated on a daily basis and are often on a delay internally, causing underreporting in more recent MMWR weeks.

- From MMWR week 2 through week 11, there were consistently more cases that were unvaccinated compared to the number of cases that were fully vaccinated or boosted.
- During week 11, the Fully Vaccinated and Boosted groups represented 15.5% (n = 15) and 22.7% (n = 22) of newly reported cases, respectively, while individuals who were Unvaccinated represented 61.9% (n = 60) of newly reported cases.



**Table 4. Number and Percentage of Cases Reporting Hospitalization and ICU by Vaccination Status and MMWR Week\*, Washoe County, 2022**

All Cases				Unvaccinated Cases				Breakthrough Cases			
MMWR Week	New Cases	Total Hospitalized	Total ICU	Hospitalized		ICU		Hospitalized		ICU	
				#	% <sup>a</sup>	#	% <sup>b</sup>	#	% <sup>a</sup>	#	% <sup>b</sup>
2	6,199	86	21	61	70.9	14	66.7	25	29.1	7	33.3
3	8,242	133	28	88	66.2	20	71.4	45	33.8	8	28.6
4	5,749	103	16	67	65.0	6	37.5	36	35.0	10	62.5
5	2,786	58	15	46	79.3	10	66.7	12	20.7	5	33.3
6	1,526	67	7	44	65.7	6	85.7	23	34.3	1	14.3
7	641	30	3	16	53.3	3	100.0	14	46.7	0	0.0
8	349	18	3	11	61.1	1	33.3	7	38.9	2	66.7
9	207	17	5	9	52.9	2	40.0	8	47.1	3	60.0
10	199	20	2	14	70.0	2	100.0	6	30.0	0	0.0
11	97	5	0	5	100.0	0	0.0	0	0.0	0	0.0

\*Note: hospitalization and ICU totals for each week are subject to change as new reports are received on a daily basis and are often delayed, causing underreporting in more recent MMWR weeks.

<sup>a</sup> Calculated as the percentage of Total Hospitalizations by vaccination status for the MMWR week.

<sup>b</sup> Calculated as the percentage of Total ICU by vaccination status for the MMWR week.

## Vaccinations

Current dose and vaccination totals and percentages for Washoe County residents; data as of 03/22/2022.

**154,252** doses reported as administered per 100,000 population (to date)

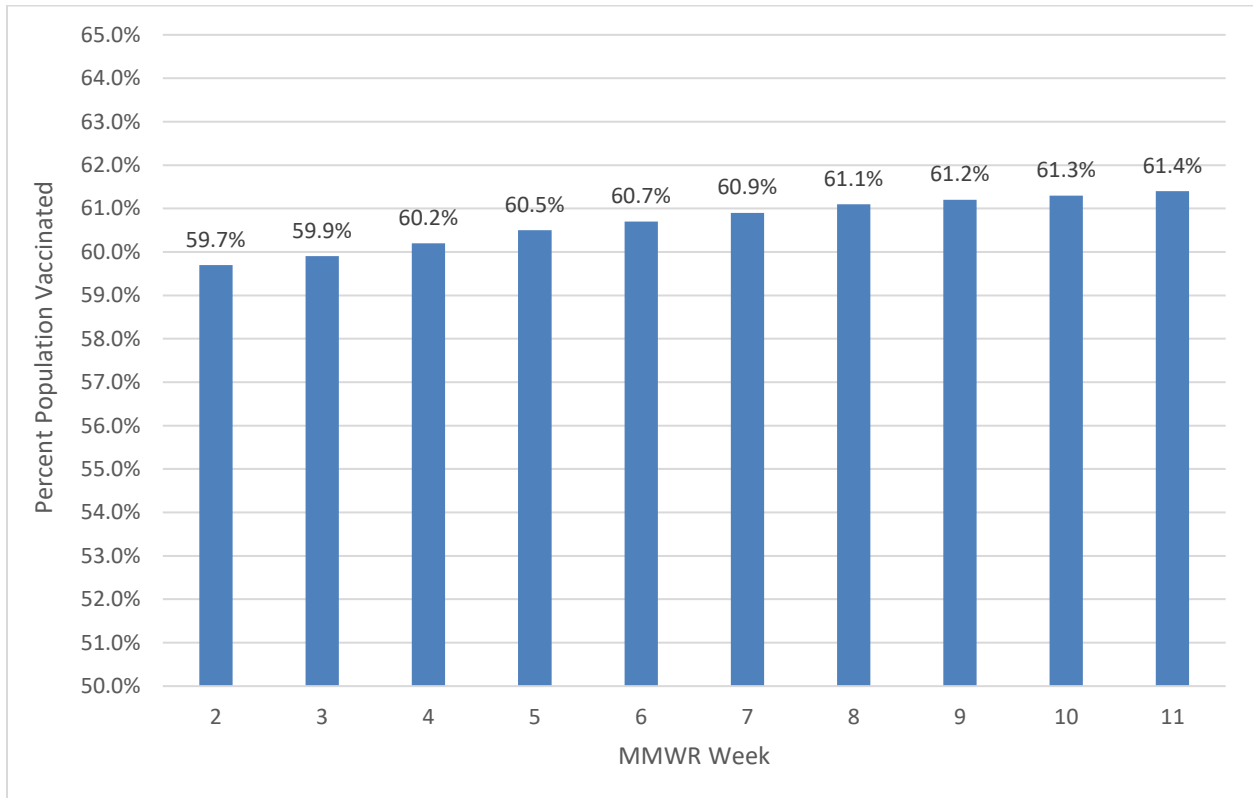
**69,491** (69.5% of population) vaccinations reported as initiated per 100,000 population

**61,425** (61.4% of population) vaccinations reported as completed per 100,000 population

**75.1%** of population 5 years and older initiated vaccination

**66.3%** of population 5 years and older completed vaccination

**Figure 6. Percentage of Population Fully Vaccinated, Washoe County, 2022**



**Table 5. Percentage of Population Vaccinated by Sex, Age Group, and Race/Ethnicity\*, Washoe County, 2021-2022**

Select Demographics		% Population Fully Vaccinated
Sex	Female	65.2%
	Male	59.2%
Age Group	0-17 years	27.9%
	18-29 years	62.7%
	30-49 years	66.8%
	50-64 years	78.1%
	65+ years	84.3%
Race / Ethnicity*	American Indian/Alaska Native, Non-Hispanic**	32.6%
	Asian/Native Hawaiian/Other Pacific Islander, Non-Hispanic	45.6%
	Black, Non-Hispanic	36.7%
	Hispanic	48.3%
	White, Non-Hispanic	49.5%

\*Note: 22.3% of the total vaccinated population were recorded as “Unknown” or “Other” and therefore population percentages are unable to be calculated for those categories. Additionally, 1.3% of the total Washoe County population had missing demographic information and therefore were not included in the overall calculations.

\*\*Note: Tribal populations may be underrepresented as the data source does not include Indian Health Services (IHS) data, which may contain vaccination records for tribal members and those who access services through IHS clinics.

- In Washoe County, the age group with the highest vaccination rates are those 65+ years (84.3%), followed by the 50-64 age group (78.1%).
- In Washoe County, those who identify as White, Non-Hispanic have the highest percent vaccinated (49.5%), followed by Hispanic (48.3%) and Asian/Native Hawaiian/Other Pacific Islander, Non-Hispanic (45.6%).

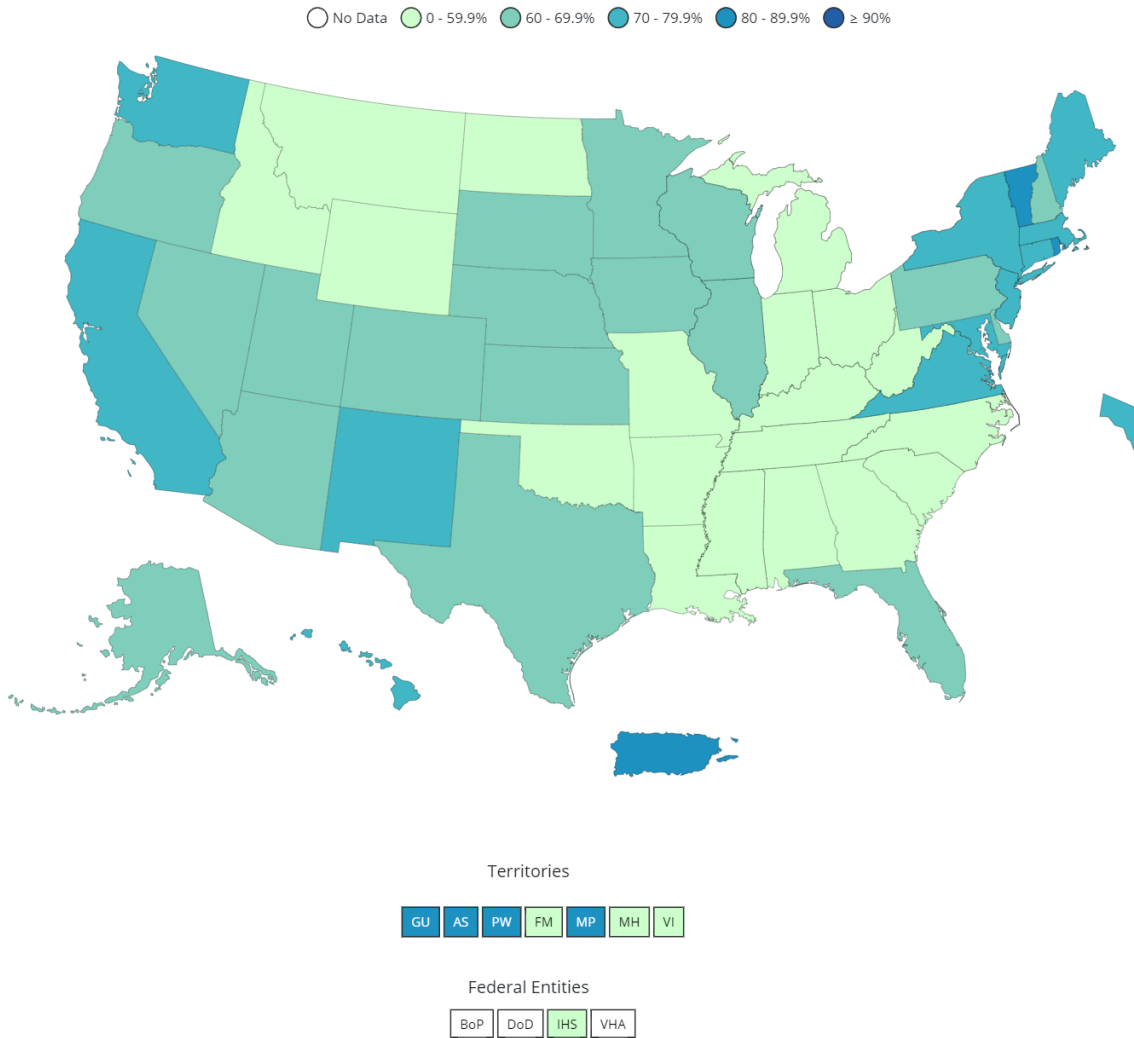
**Table 6. Percentage of Total Population Fully Vaccinated and Boosted by Washoe County, Nevada, and the United States, 2021-2022**

	% Population Fully Vaccinated	% Population Boosted
United States*	65.4%	29.1%
Nevada*	60.1%	22.6%
Washoe County**	61.4%	27.7%

\* Data Source: [https://covid.cdc.gov/covid-data-tracker/#vaccinations\\_vacc-people-fully-percent-total](https://covid.cdc.gov/covid-data-tracker/#vaccinations_vacc-people-fully-percent-total) as of 3/21/2022.

\*\* Data Source: WebIZ as of 3/22/2022.

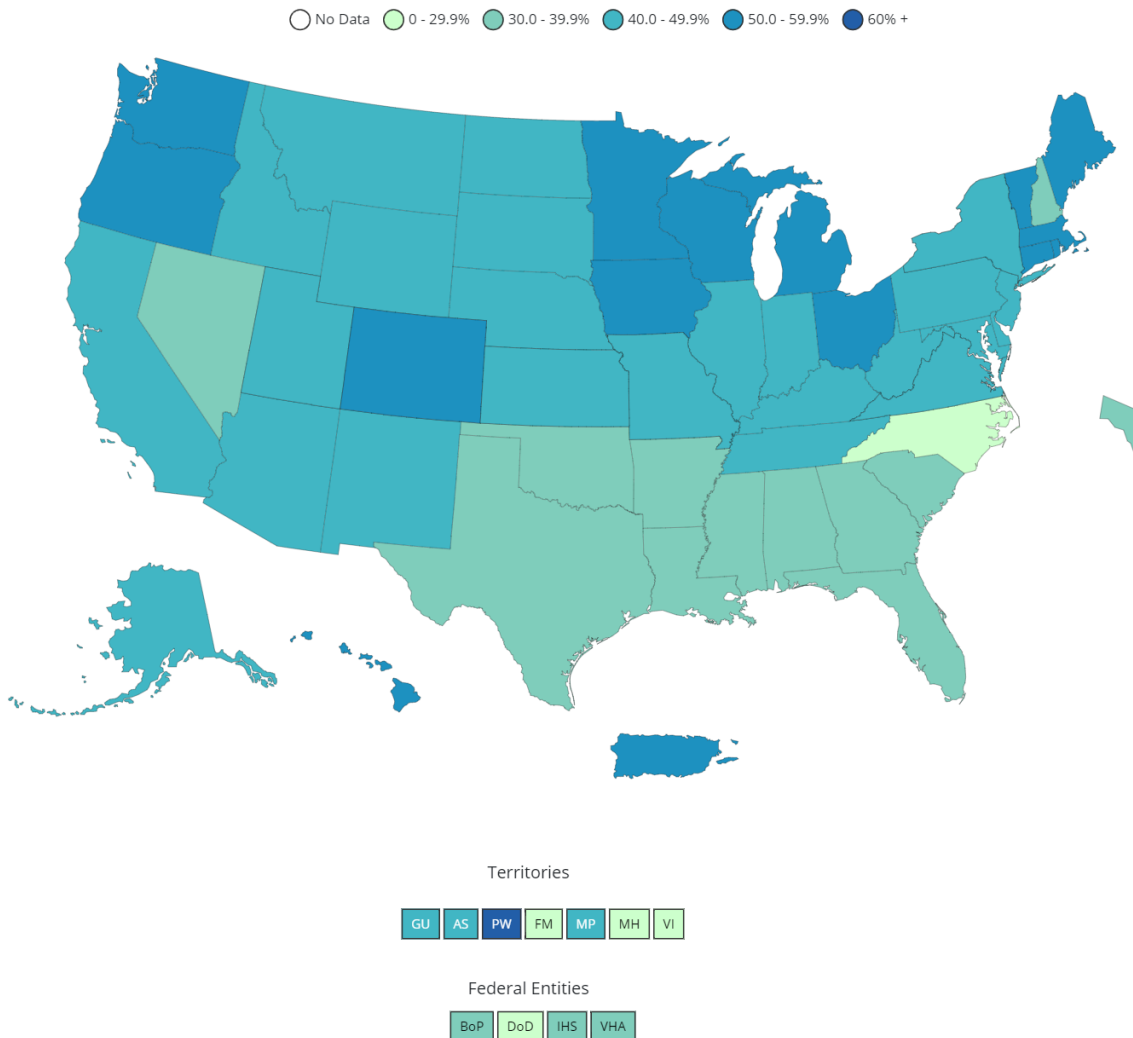
**Figure 7. Percent of People Fully Vaccinated Reported to the CDC by State/Territory and for Select Federal Entities for the Total Population**



Data for Federal Entities are presented here and are also incorporated into the respective jurisdictional totals

Data source for U.S. map for fully vaccinated people reported to the CDC, as of 3/21/2022 6:00 AM ET. Posted: Monday, March 21, 2022, 4:00 PM ET, CDC COVID Data Tracker [https://covid.cdc.gov/covid-data-tracker/#vaccinations\\_vacc-people-fully-percent-total](https://covid.cdc.gov/covid-data-tracker/#vaccinations_vacc-people-fully-percent-total)

**Figure 8. Percent of Fully Vaccinated People with a Booster Dose Reported to the CDC by State/Territory or Select Federal Entities for the Total Population**



Data for Federal Entities are presented here and are also incorporated into the respective jurisdictional totals

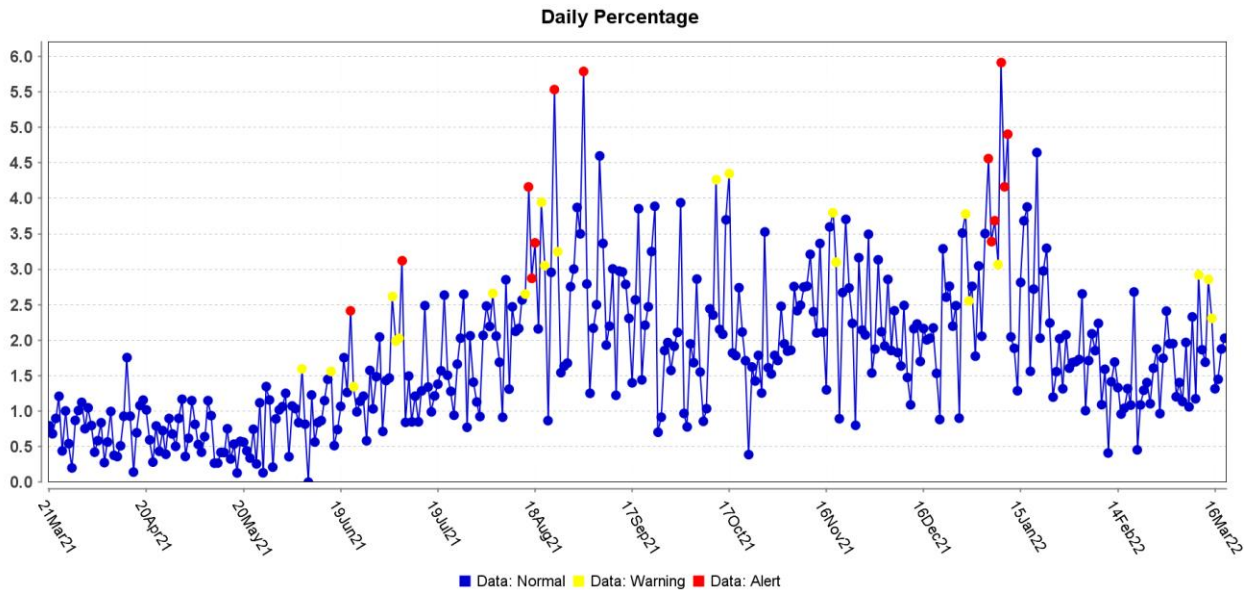
Data source for U.S. map for fully vaccinated people with a booster dose reported to the CDC, as of 3/21/2022 6:00 AM ET. Posted: Monday, March 21, 2022, 4:00 PM ET, CDC COVID Data Tracker [https://covid.cdc.gov/covid-data-tracker/#vaccinations\\_vacc-people-additional-dose-totalpop](https://covid.cdc.gov/covid-data-tracker/#vaccinations_vacc-people-additional-dose-totalpop)

Note: Percent of fully vaccinated people with a booster dose is a different metric than percentage of total population who received a booster dose provided in Table 6.

## Surveillance Data

Percentage of persons indicating COVID-19 as the reason for visit to the Emergency Room (ER) is presented in Figure 9. The overlay below depicts COVID-19 in blue. Alerts appear as yellow and/or red dots. They indicate an unusually high percentage of COVID-19 visits according to ESSENCE algorithms.

**Figure 9. Percentage of ER Visits Due to COVID in the Last Year, Washoe County**



Data source: ESSENCE

## Glossary/Key Terms

### **COVID-19 Case**

Coronavirus Disease 2019 (COVID-19) cases counted in this document are confirmed or probable cases as determined by meeting confirmatory laboratory evidence, clinical criteria, and/or epidemiologic linkage as defined on the CDC website here:

<https://ndc.services.cdc.gov/case-definitions/coronavirus-disease-2019-2021/>

### **COVID-19 Hospitalization**

COVID-19 hospitalizations are counted as those hospitalized for greater than or equal to 24 hours and have a positive SARS-CoV-2 laboratory test.

### **COVID-19 Death**

As of January 1, 2022, both Confirmed and Probable COVID-19-associated deaths are included in the count.

- ([https://cdn.ymaws.com/www.cste.org/resource/resmgr/pdfs/pdfs2/20211222\\_interim-guidance.pdf](https://cdn.ymaws.com/www.cste.org/resource/resmgr/pdfs/pdfs2/20211222_interim-guidance.pdf))

Criteria for confirmed case death:

- The case meets the confirmed COVID-19 surveillance case definition, AND at least ONE of the following criteria is met:

- A case investigation determined that COVID-19 was the cause of death or contributed to the death.
- The death certificate indicates COVID-19 or an equivalent term as one of the causes of death, regardless of the time elapsed since specimen collection of the confirmatory laboratory test used to define the case.
- The death occurred within (and including) 30 days of specimen collection for the confirmatory laboratory test used to define the case and was due to natural causes (e.g., the Manner of Death is coded as “natural” on the death certificate.)

Criteria for probable case death:

- The case meets the probable COVID-19 case definition AND a case investigation determined that COVID-19 was the cause of death or contributed to the death; **OR**
- The case meets the probable COVID-19 surveillance case definition based on presumptive laboratory evidence AND death occurred within (and including) 30 days of specimen collection and was due to natural causes (e.g., the Manner of Death is coded as “natural” on the death certificate.); **OR**
- The case meets the probable COVID-19 surveillance case definition based on epidemiologic linkage and meeting clinical criteria, AND death occurred within (and including) 30 days of symptom onset and was due to natural causes (e.g., the Manner of Death is coded as “natural” on the death certificate.); **OR**
- The case meets the probable COVID-19 surveillance case definition based only on vital records criteria (i.e., a death certificate that lists COVID-19 disease or SARS-CoV-2 or an equivalent term as an underlying cause of death or a significant condition contributing to death and there is no confirmatory or presumptive laboratory evidence.)

## Links

### WCHD COVID Dashboard

<https://washoe.maps.arcgis.com/apps/dashboards/0db36fa8fa9c47758bc38210e4c23818>

### WCHD website for COVID information and vaccine appointments

<https://covid19washoe.com/>

**CDC COVID Data Tracker** <https://covid.cdc.gov/covid-data-tracker/>

### Nevada State Public Health Laboratory created a new COVID-19 variant web page

<https://www.nvsarscov2variant.com/variants>

### Department of Health and Human Services Nevada Division of Public and Behavioral Health (DPBH) Technical Bulletins

[https://dphh.nv.gov/Resources/Technical\\_Bulletins-New/](https://dphh.nv.gov/Resources/Technical_Bulletins-New/)

**WCHD COVID reports** <https://covid19washoe.com/daily-updates/washoe-county-covid-19-data-report/>