

COVID-19 Epidemiology Surveillance Program
MMWR Week #6 – 7, Feb. 6 – Feb. 19, 2022

Division of Epidemiology & Public Health Preparedness (EHP) 775-328-2447

Adam Vazquez, MPH, COVID-19 Epidemiologist AVazquez@washoecounty.gov

Lissa Callahan, COVID-19 Statistician LCallahan@washoecounty.gov

Weekly Summary*

Metrics	Week 6	Week 7
Number of New Cases	1,719	642
New Cases per 100,000 Population	357	133
Number of New Breakthrough Cases	495	170
Hospitalizations**	60	25
Deaths**	19	3

- Completed Vaccination Total through 02/22/2022: 294,708 persons

*For definition and specifics on metrics summarized, please refer to corresponding sections.

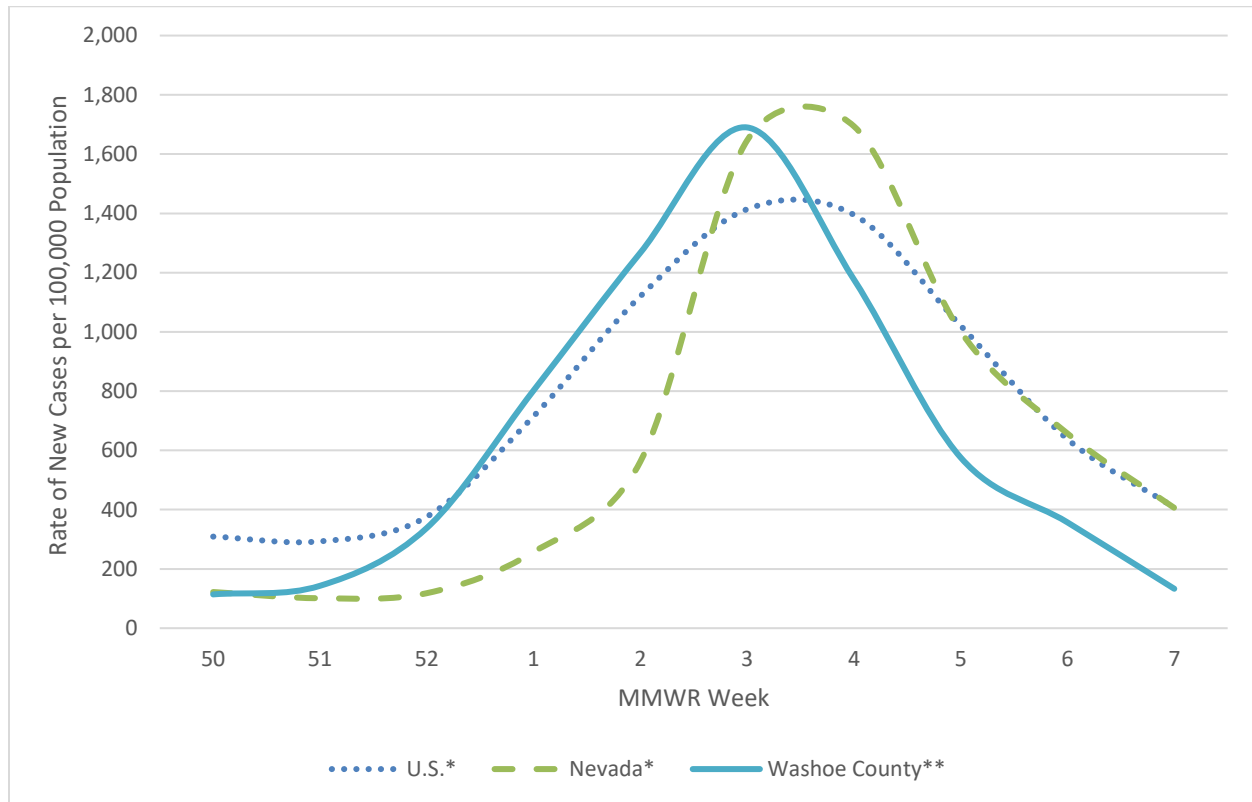
**Note: hospitalization and death totals for each week are subject to change as new reports are received on a daily basis and are often delayed, causing underreporting in more recent MMWR weeks.

Key message(s)

- The number of cases reported in Washoe County has declined to rates observed prior to the Omicron surge.

COVID-19 Case Information

Figure 1. Rate of New Cases Reported by MMWR Week, Washoe County, Nevada, and the United States, 2021-2022

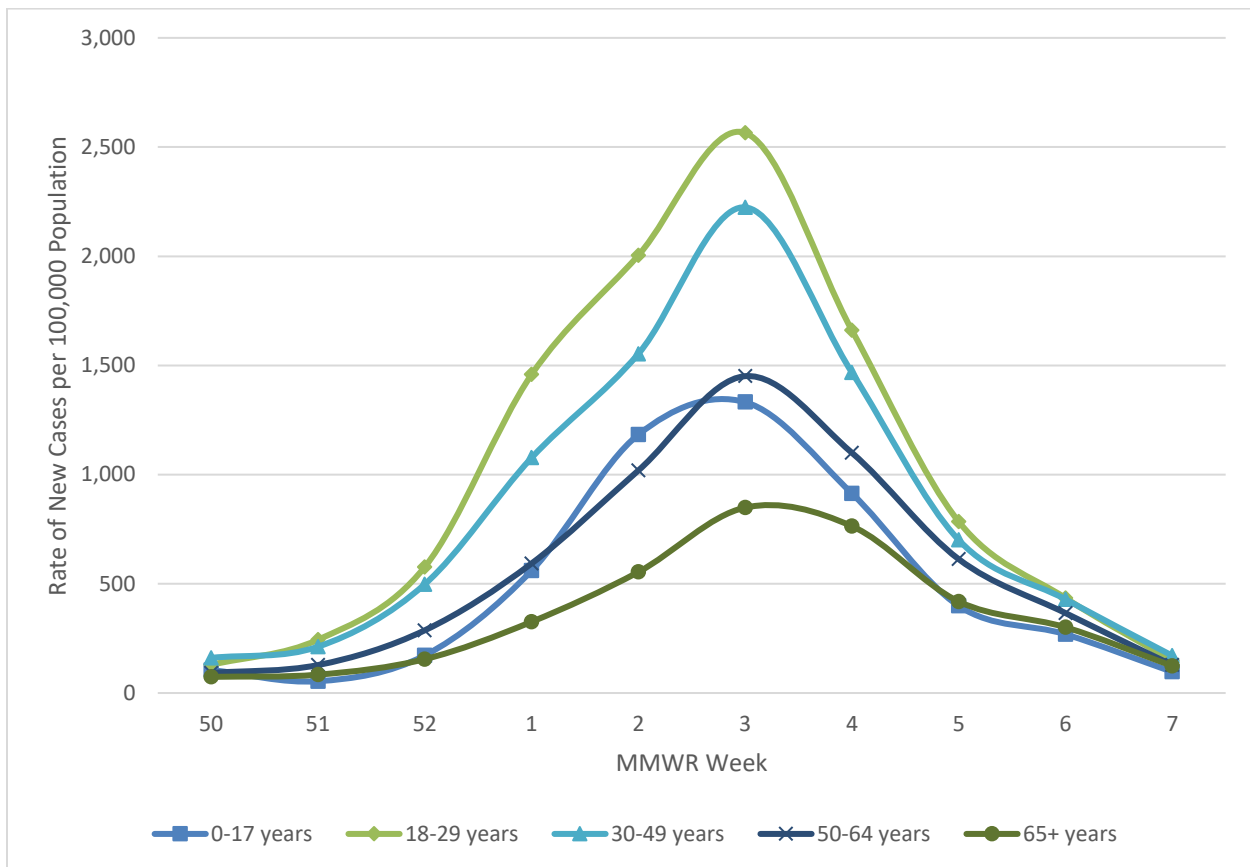


*Data source: <https://data.cdc.gov/Public-Health-Surveillance/United-States-COVID-19-County-Level-of-Community-T/8396-v7yb>

** Data source: Internal, WCHD

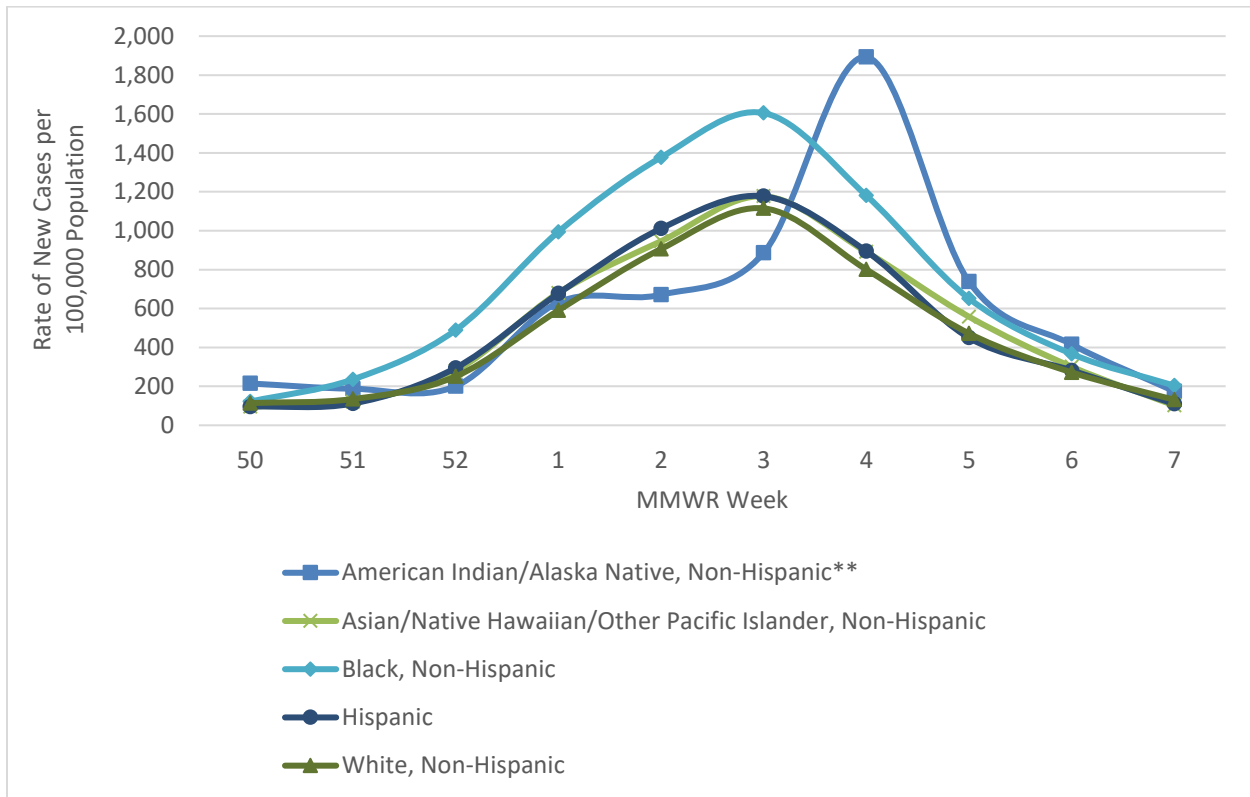
- In Washoe County, case counts decreased in MMWR weeks 6 and 7. During MMWR week 3 there were 1,690 new cases per 100,000 population. Case counts decreased to 357 and 133 new cases per 100,000 population in MMWR week 6 and week 7, respectively.
- In Nevada, case counts increased to 1,694 new cases per 100,000 population in MMWR week 4 and as of MMWR week 7, decreased to 406 new cases per 100,000 population.
- In the United States, case counts also decreased. During MMWR week 6 and week 7 there were 638 and 407 new cases per 100,000 population, respectively; a decline from the peak of 1,414 new cases per 100,000 population during week 3.

Figure 2. Rate of New Cases Reported by Age Group and MMWR Week, Washoe County, 2021-2022



- From MMWR week 3 through week 7, there was a decrease in cases per 100,000 population across all age groups.
- The age group with highest case rate per 100,000 population during week 7 was the 30-49 age group with 171 new cases per 100,000 population. This was a decrease from 2,224 new cases per 100,000 population in week 3.
- The next highest case rate during week 7 was the 18-29 age group, with 148 new cases per 100,000 population.
- The 0-17 age group had the lowest number of new cases per 100,000 during week 7 with 97, which decreased from a 10-week high of 1,332 new cases per 100,000 in week 3.

Figure 3. Rate of New Cases Reported by Race/Ethnicity* and MMWR Week, Washoe County, 2021-2022



*Note: From MMWR week 50 to week 7, 24.3% of cases were recorded as “Declined to answer”, “Multiple”, “Other”, “Not Asked”, or “Unknown” and rates per 100,000 population are unable to be calculated for those categories.

**Note: Tribal populations may be underrepresented as the data source does not include Indian Health Services (IHS) data.

- From MMWR week 51 through 3, those who identified as Black, Non-Hispanic had the highest rate of new cases per 100,000 population.
- The rate of new cases per 100,000 among those identifying as Black, Non-Hispanic was highest in week 3, with 1,605 cases per 100,000 population.
- During weeks 4 and 5, those who identified as American Indian/Alaska Native, Non-Hispanic had the highest rate of new cases per 100,000 population at 1,893 and 652 new cases per 100,000 population, respectively.

Hospitalizations, ICU Status, & Deaths

COVID-19 hospitalizations are defined as those hospitalized for greater than or equal to 24 hours and have a positive SARS-CoV-2 laboratory test.

COVID-19 deaths are defined as decedents who have had a positive PCR COVID-19 lab report \leq 30 days from death or post-mortem. This includes deaths attributed to COVID-19 related illnesses and, if not specifically listed on death certificate, a positive PCR COVID-19 lab, dependent on the manner of death. See full definition in Glossary/Key Terms at the end of the report.

Table 1. Number and Percent of New Cases Reported by Age and Hospitalization Status, MMWR Weeks* 6 and 7, Washoe County, 2022

			Age Group				
			0-17	18-29	30-49	50-64	65+
MMWR Week	6	Total Cases	290	350	525	318	236
		% Hospitalized	3.4%	0.6%	1.3%	4.7%	11.0%
	7	Total Cases	105	119	209	111	97
		% Hospitalized	1.0%	0.8%	1.4%	7.2%	12.4%

* Note: hospitalization totals for each week are subject to change as new reports are received on a daily basis and are often delayed, causing underreporting in more recent MMWR weeks.

- During MMWR week 6 and week 7 the age groups with the highest percentage of total cases resulting in hospitalization were those aged 50-64 and 65+ years of age.
- In Washoe County, during MMWR week 6 and week 7, 4.7% and 7.2% of the cases in the 50-64 age group were hospitalized, respectively.
- In Washoe County, during MMWR week 6 and week 7, 11.0% and 12.4% of the cases in the 65+ age group were hospitalized, respectively.

Table 2. Number and Percentage of Cases Reported by Hospitalization and ICU Status by MMWR Week*, Washoe County, 2021-2022

MMWR Week	New Cases	Hospitalized		ICU	
		#	%	#	%
50	552	22	4.0	3	0.5
51	690	26	3.8	7	1.0
52	1,631	43	2.6	3	0.2
1	3,866	66	1.7	9	0.2
2	6,110	85	1.4	18	0.3
3	8,150	129	1.6	26	0.3
4	5,674	93	1.6	14	0.2
5	2,779	51	1.8	12	0.4
6	1,719	60	3.5	5	0.3
7	642	25	3.9	2	0.3

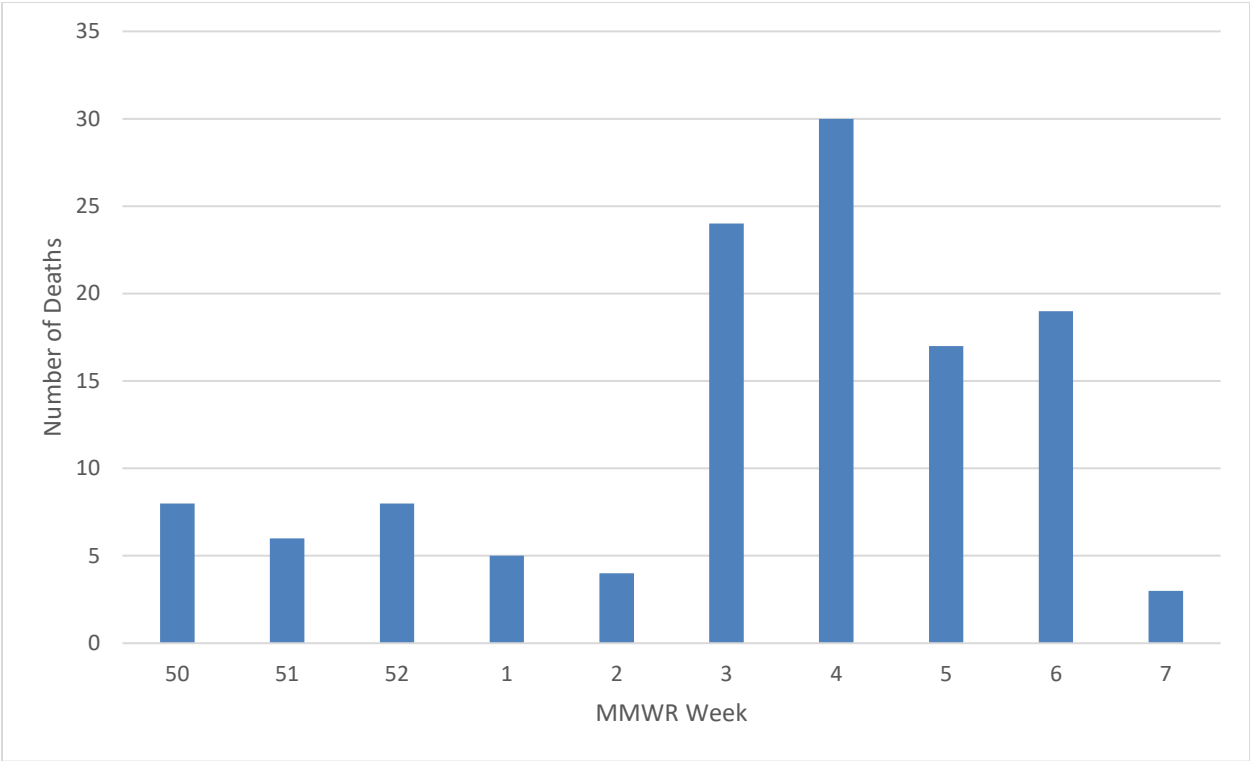
*Note: hospitalization and ICU totals for each week are subject to change as new reports are received on a daily basis and are often delayed, causing underreporting in more recent MMWR weeks.

Table 3. COVID-19 Deaths by Age Group and Time Period* of Death, Washoe County, 2020-2022

Time Period	Total Deaths	0-17 years	18-29 years	30-49 years	50-64 years	65+ years
2020 March - December	508	0	2	32	85	388
2021 Total	523	0	6	58	119	340
2022 January	74	0	1	5	11	57

*Note: death totals are subject to change as new reports are received on a daily basis and are often delayed, causing underreporting in more recent months.

Figure 4. Number of Deaths Occurring by MMWR Week*, Washoe County, 2021-2022

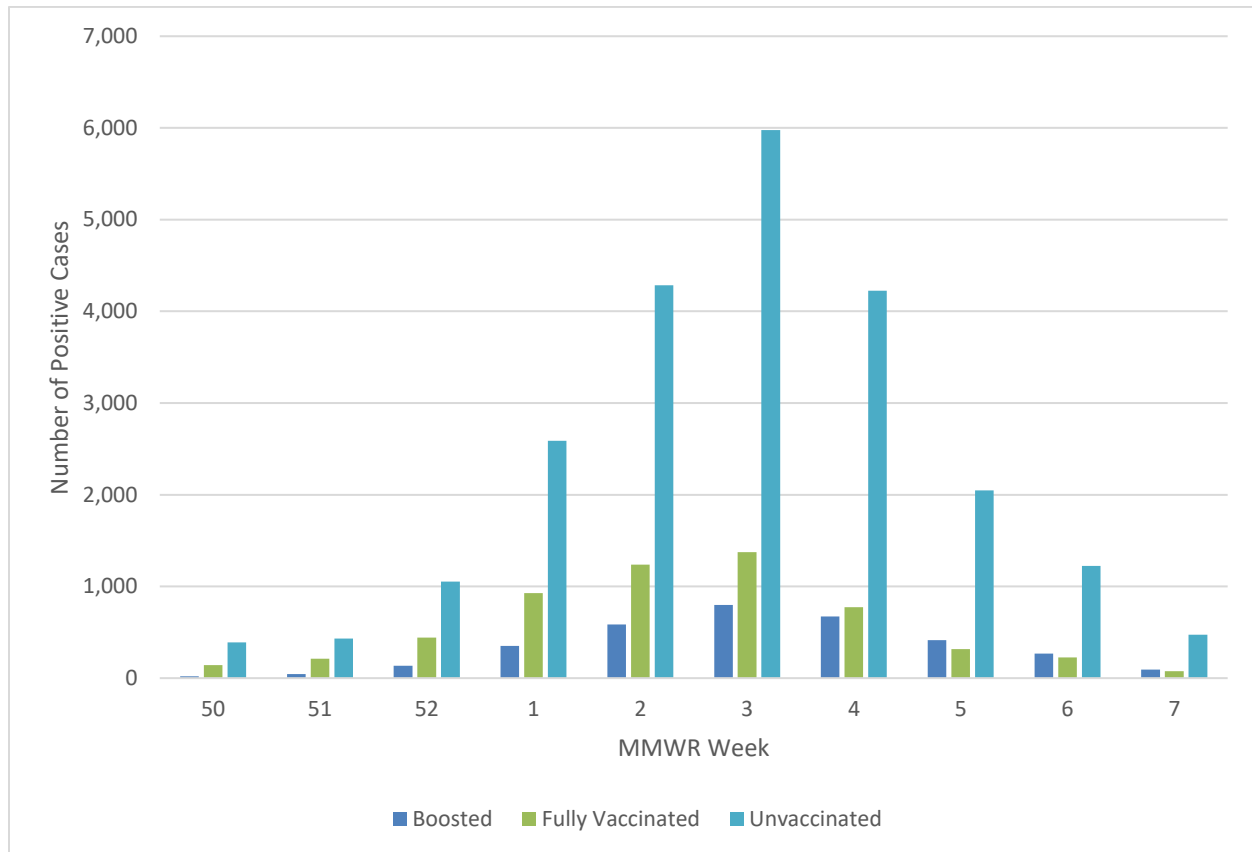


*Note: death totals for each week are subject to change as new reports are received on a daily basis and are often delayed, causing underreporting in more recent MMWR weeks.

Breakthrough Cases

A breakthrough COVID-19 case is defined as a Washoe County resident who has SARS-CoV-2 PCR or antigen detected through laboratory testing 14 or more days after completing the primary series of an FDA-authorized COVID-19 vaccine.

Figure 5. Number of Cases by Vaccination Status and MMWR Week*, Washoe County, 2021-2022



*Note: vaccination data for each week are subject to change as vaccinations are updated on a daily basis and are often on a delay internally, causing underreporting in more recent MMWR weeks.

- From MMWR week 50 through week 7, there was a higher number of cases that were unvaccinated compared to number of cases that were fully vaccinated or boosted.
- The highest case count in the Unvaccinated group over this 10-week window of data was 5,978 cases in week 3, which contributed to 73.3% of all newly reported cases during week 3.
- During week 7, the Fully Vaccinated and Boosted groups represented 11.7% (n = 75) and 14.8% (n = 95) of newly reported cases while individuals who were Unvaccinated represented 73.5% (n = 472) of newly reported cases.

Table 4. Number and Percentage of Cases Reporting Hospitalization and ICU by Vaccination Status and MMWR Week*, Washoe County, 2021-2022

All Cases				Unvaccinated Cases				Breakthrough Cases			
MMWR Week	New Cases	Total Hospitalized	Total ICU	Hospitalized		ICU		Hospitalized		ICU	
				#	% ^a	#	% ^b	#	% ^a	#	% ^b
50	552	22	3	17	77.3	3	100.0	5	22.7	0	0.0
51	690	26	7	21	80.8	6	85.7	5	19.2	1	14.3
52	1,631	43	3	31	72.1	3	100.0	12	27.9	0	0.0
1	3,866	66	9	47	71.2	7	77.8	19	28.8	2	22.2
2	6,110	85	18	60	70.6	11	61.1	25	29.4	7	38.9
3	8,150	129	26	87	67.4	19	73.1	42	32.6	7	26.9
4	5,674	93	14	60	64.5	6	42.9	33	35.5	8	57.1
5	2,779	51	12	41	80.4	8	66.7	10	19.6	4	33.3
6	1,719	60	5	39	65.0	4	80.0	21	35.0	1	20.0
7	642	25	2	18	72.0	2	100.0	7	28.0	0	0.0

*Note: hospitalization and ICU totals for each week are subject to change as new reports are received on a daily basis and are often delayed, causing underreporting in more recent MMWR weeks.

^a Calculated as the percentage of Total Hospitalizations by vaccination status for the MMWR week.

^b Calculated as the percentage of Total ICU by vaccination status for the MMWR week.

Vaccinations

Current dose and vaccination totals and percentages for Washoe County residents; data as of 02/23/2022.

152,877 doses reported as administered per 100,000 population (to date)

69,427 (69.4% of population) vaccinations reported as initiated per 100,000 population

61,124 (61.1% of population) vaccinations reported as completed per 100,000 population

75.0% of population 5 years and older initiated vaccination

66.0% of population 5 years and older completed vaccination

Figure 6. Percentage of Population Fully Vaccinated, Washoe County, 2021-2022

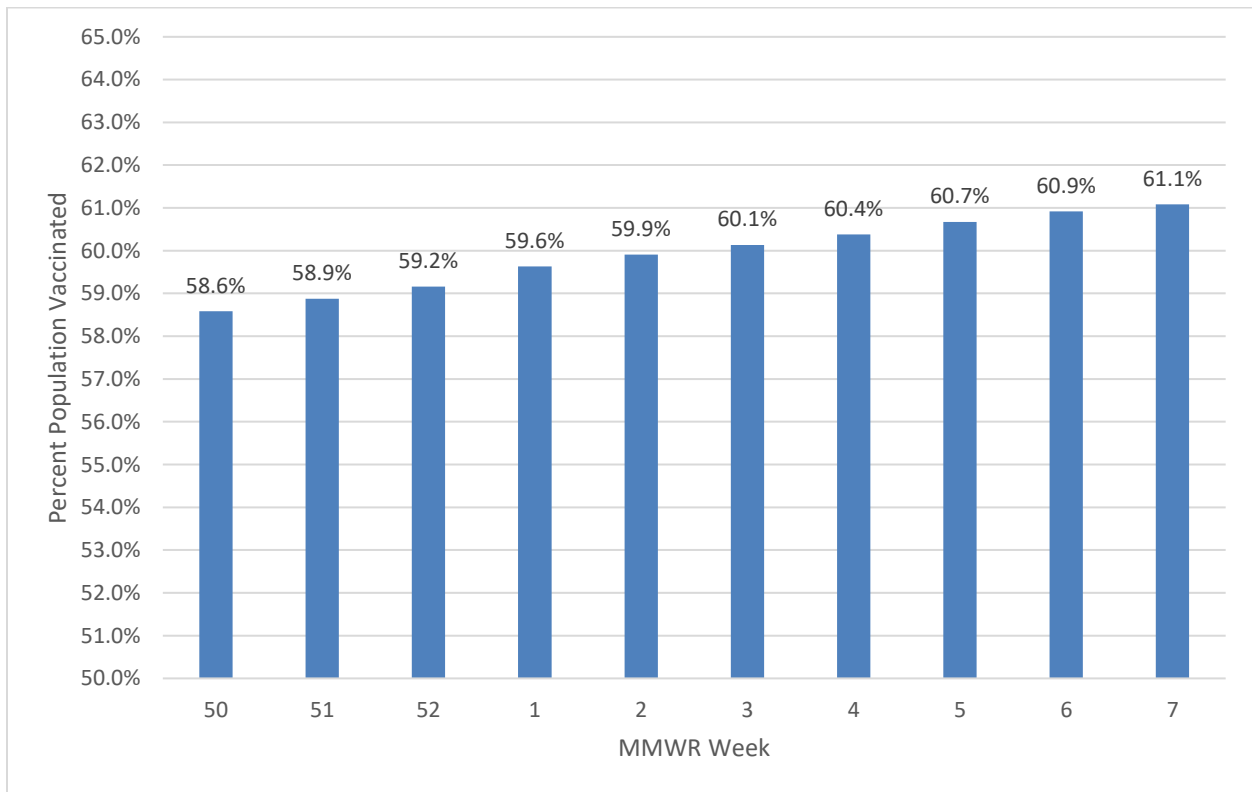


Table 5. Percentage of Population Vaccinated by Sex, Age Group, and Race/Ethnicity*, Washoe County, 2021-2022

Select Demographics		% Population Fully Vaccinated
Sex	Female	64.9%
	Male	58.9%
Age Group	0-17 years	26.8%
	18-29 years	62.4%
	30-49 years	66.7%
	50-64 years	78.1%
	65+ years	84.4%
Race / Ethnicity*	American Indian/Alaska Native, Non-Hispanic**	31.7%
	Asian/Native Hawaiian/Other Pacific Islander, Non-Hispanic	45.5%
	Black, Non-Hispanic	36.4%
	Hispanic	47.8%
	White, Non-Hispanic	49.4%

*Note: 22.3% of the total vaccinated population were recorded as “Unknown” or “Other” and therefore population percentages are unable to be calculated for those categories. Additionally, 1.3% of the total Washoe County population had missing demographic information and therefore were not included in the overall calculations.

**Note: Tribal populations may be underrepresented as the data source does not include Indian Health Services (IHS) data, which may contain vaccination records for tribal members and those who access services through IHS clinics.

- In Washoe County, the 65+ age group has the highest percent vaccinated, with 84.4% of the 65+ population, followed by the 50-64 age group with 78.1% of individuals vaccinated.
- In Washoe County, those who identify as White, Non-Hispanic have the highest percent vaccinated (49.4%), followed by Hispanic (47.8%) and Asian/Native Hawaiian/Other Pacific Islander, Non-Hispanic (45.5%).

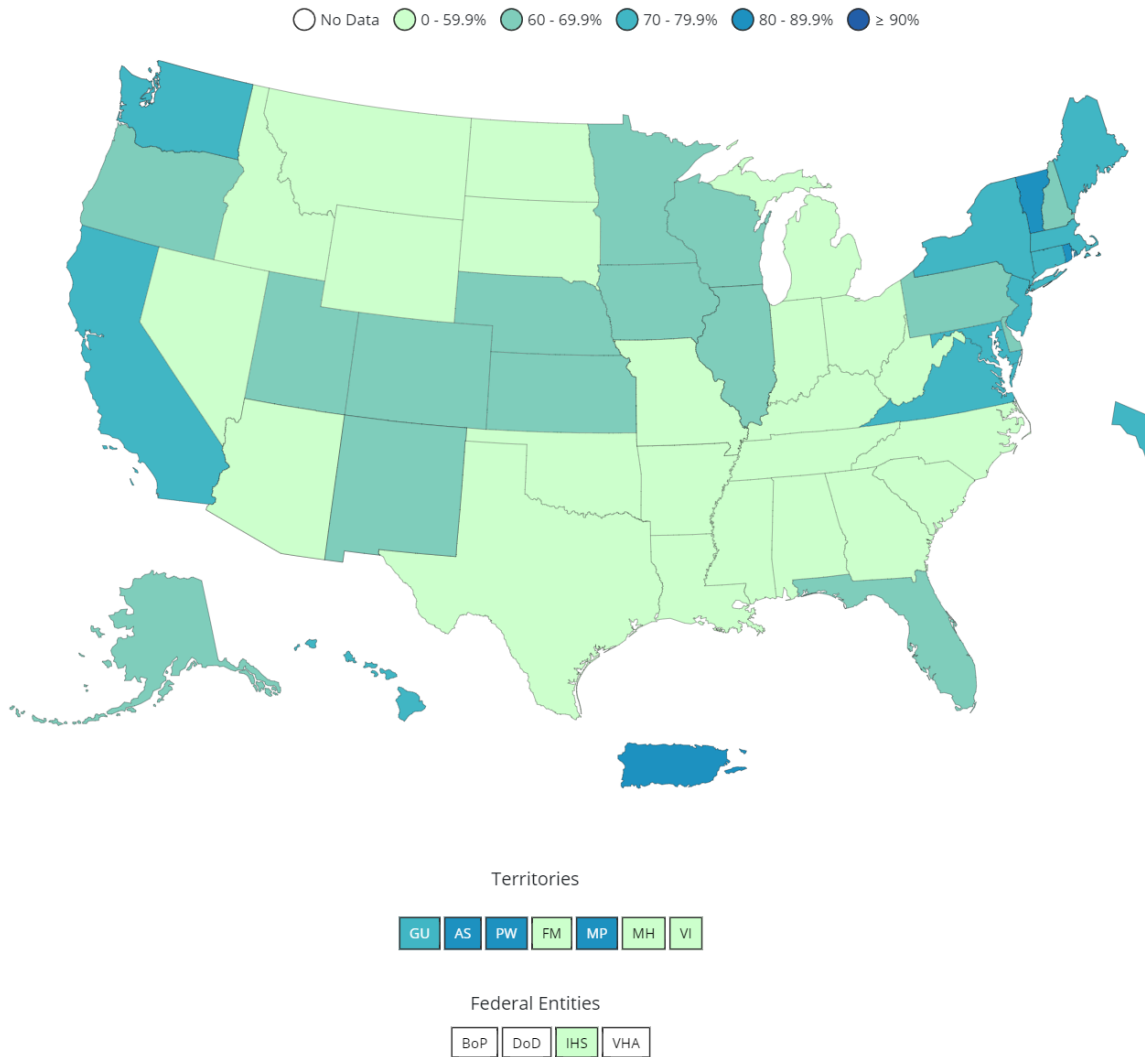
Table 6. Percentage of Total Population Fully Vaccinated and Boosted by Washoe County, Nevada, and the United States, 2021-2022

	% Population Fully Vaccinated	% Population Boosted
United States*	64.8%	28.1%
Nevada*	59.5%	21.9%
Washoe County**	61.1%	26.9%

* Data Source: https://covid.cdc.gov/covid-data-tracker/#vaccinations_vacc-people-fully-percent-total as of 2/22/2022.

** Data Source: WebIZ as of 2/23/2022.

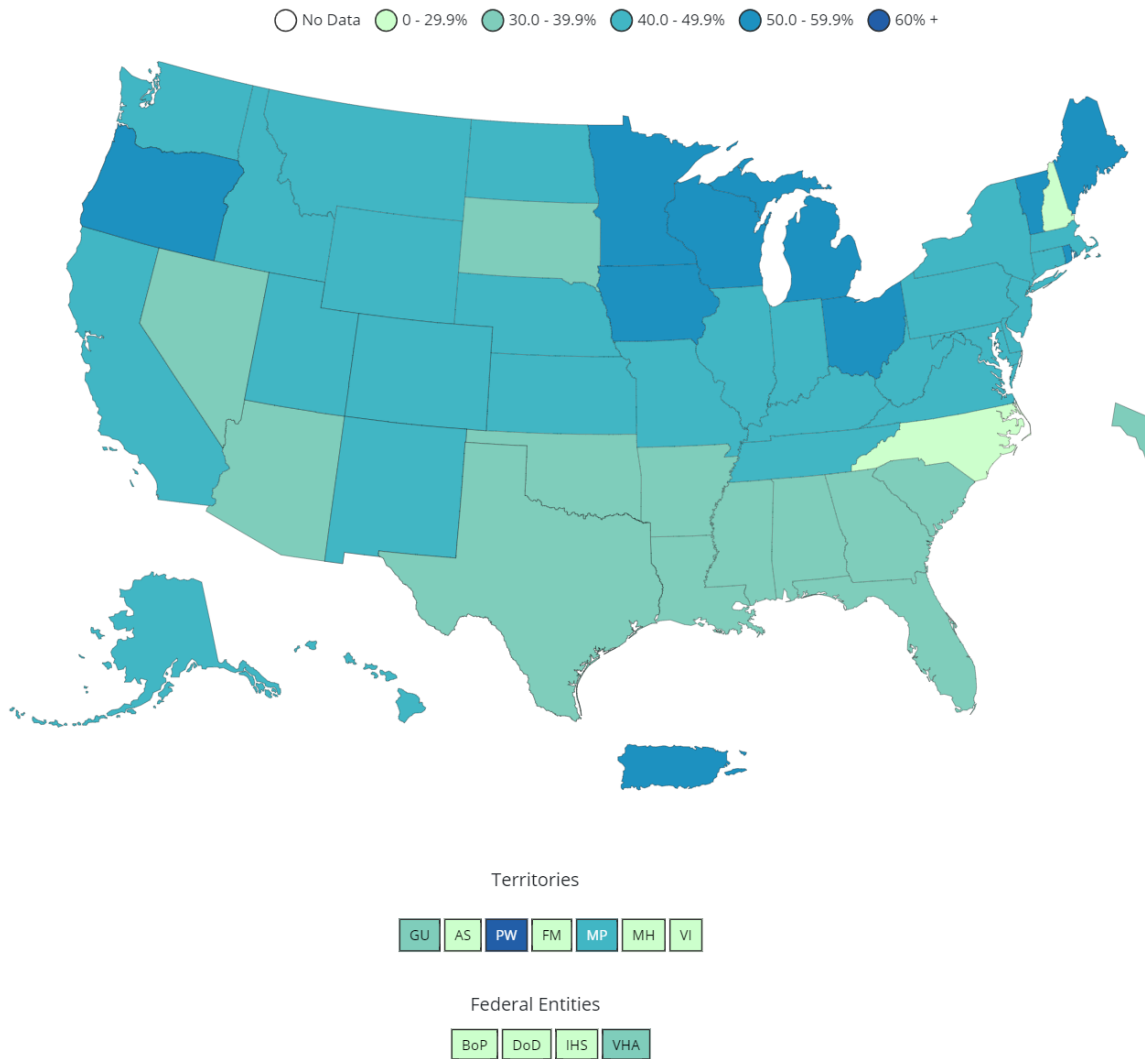
Figure 7. Percent of People Fully Vaccinated Reported to the CDC by State/Territory and for Select Federal Entities for the Total Population



Data for Federal Entities are presented here and are also incorporated into the respective jurisdictional totals

Data source for U.S. map for fully vaccinated people reported to the CDC, as of 2/22/2022 6:00 AM ET. Posted: Tuesday, February 22, 2022, 3:29 PM ET, CDC COVID Data Tracker https://covid.cdc.gov/covid-data-tracker/#vaccinations_vacc-people-fully-percent-total

Figure 8. Percent of Fully Vaccinated People with a Booster Dose Reported to the CDC by State/Territory or Select Federal Entities for the Total Population



Data for Federal Entities are presented here and are also incorporated into the respective jurisdictional totals

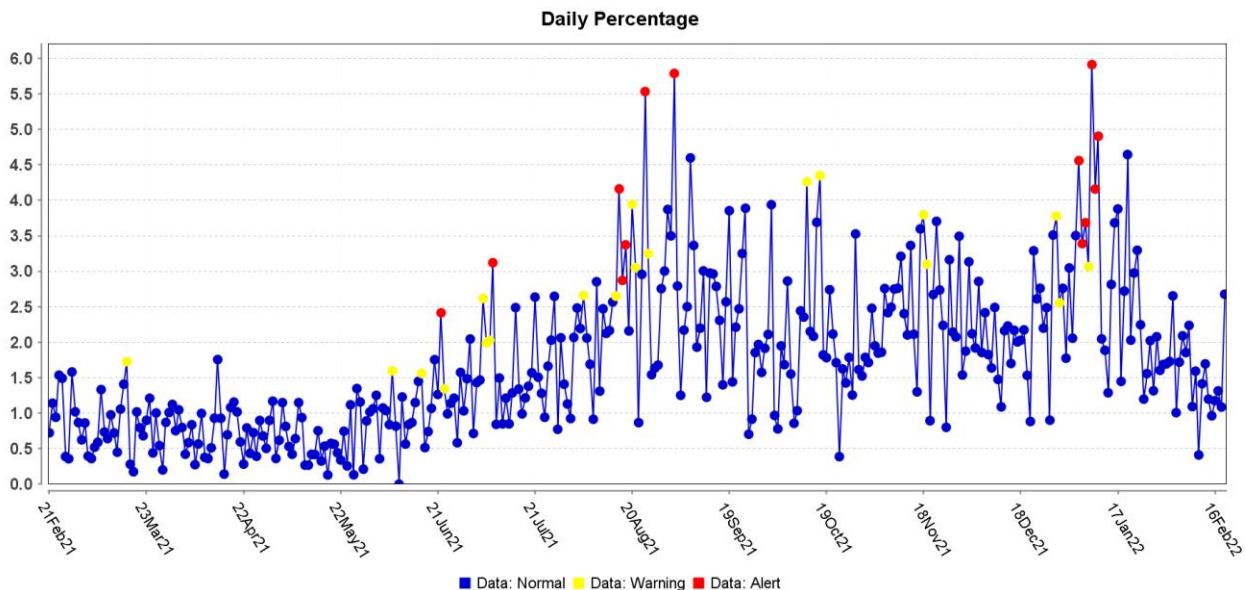
Data source for U.S. map for fully vaccinated people with a booster dose reported to the CDC, as of 2/22/2022 6:00 AM ET. Posted: Tuesday, February 22, 2022, 3:29 PM ET, CDC COVID Data Tracker https://covid.cdc.gov/covid-data-tracker/#vaccinations_vacc-people-additional-dose-totalpop

Note: Percent of fully vaccinated people with a booster dose is a different metric than percentage of total population who received a booster dose provided in Table 6.

Surveillance Data

Percentage of persons indicating COVID-19 as the reason for visit to the Emergency Room (ER) is presented in Figure 9. The overlay below depicts COVID-19 in blue. Alerts appear as yellow and/or red dots. They indicate an unusually high percentage of COVID-19 visits according to ESSENCE algorithms.

Figure 9. Percentage of ER Visits Due to COVID in the Last Year, Washoe County



Data source: ESSENCE

Glossary/Key Terms

COVID-19 Case

Coronavirus Disease 2019 (COVID-19) cases counted in this document are confirmed or probable cases as determined by meeting confirmatory laboratory evidence, clinical criteria, and/or epidemiologic linkage as defined on the CDC website here:

<https://ndc.services.cdc.gov/case-definitions/coronavirus-disease-2019-2021/>

COVID-19 Hospitalization

COVID-19 hospitalizations are counted as those hospitalized for greater than or equal to 24 hours and have a positive SARS-CoV-2 laboratory test.

COVID-19 Death

As of January 1, 2022, both Confirmed and Probable COVID-19-associated deaths are included in the count.

- (https://cdn.ymaws.com/www.cste.org/resource/resmgr/pdfs/pdfs2/20211222_interim-guidance.pdf)

Criteria for confirmed case death:

- The case meets the confirmed COVID-19 surveillance case definition, AND at least ONE of the following criteria is met:

- A case investigation determined that COVID-19 was the cause of death or contributed to the death.
- The death certificate indicates COVID-19 or an equivalent term as one of the causes of death, regardless of the time elapsed since specimen collection of the confirmatory laboratory test used to define the case.
- The death occurred within (and including) 30 days of specimen collection for the confirmatory laboratory test used to define the case and was due to natural causes (e.g., the Manner of Death is coded as “natural” on the death certificate.)

Criteria for probable case death:

- The case meets the probable COVID-19 case definition AND a case investigation determined that COVID-19 was the cause of death or contributed to the death; **OR**
- The case meets the probable COVID-19 surveillance case definition based on presumptive laboratory evidence AND death occurred within (and including) 30 days of specimen collection and was due to natural causes (e.g., the Manner of Death is coded as “natural” on the death certificate.); **OR**
- The case meets the probable COVID-19 surveillance case definition based on epidemiologic linkage and meeting clinical criteria, AND death occurred within (and including) 30 days of symptom onset and was due to natural causes (e.g., the Manner of Death is coded as “natural” on the death certificate.); **OR**
- The case meets the probable COVID-19 surveillance case definition based only on vital records criteria (i.e., a death certificate that lists COVID-19 disease or SARS-CoV-2 or an equivalent term as an underlying cause of death or a significant condition contributing to death and there is no confirmatory or presumptive laboratory evidence.)

Links

WCHD COVID Dashboard

<https://washoe.maps.arcgis.com/apps/dashboards/0db36fa8fa9c47758bc38210e4c23818>

WCHD website for COVID information and vaccine appointments

<https://www.washoecounty.gov/health/index.php?choice=bdr>

CDC COVID Data Tracker <https://covid.cdc.gov/covid-data-tracker/>

Nevada State Public Health Laboratory created a new COVID-19 variant web page

<https://www.nvsarscov2variant.com/variants>

Department of Health and Human Services Nevada Division of Public and Behavioral Health (DPBH) Technical Bulletins

https://dphh.nv.gov/Resources/Technical_Bulletins-New/

WCHD COVID reports <https://covid19washoe.com/daily-updates/washoe-county-covid-19-data-report/>