

**COVID-19 Epidemiology Surveillance Program**  
**MMWR Week #16 – 17, Apr. 17 – Apr. 30, 2022**

Division of Epidemiology & Public Health Preparedness (EHP) 775-328-2447

Adam Vazquez, MPH, COVID-19 Epidemiologist [AVazquez@washoecounty.gov](mailto:AVazquez@washoecounty.gov)

Lissa Callahan, COVID-19 Statistician [LCallahan@washoecounty.gov](mailto:LCallahan@washoecounty.gov)

**Weekly Summary\***

Metrics	Week 16	Week 17
Number of New Cases	165	217
New Cases per 100,000 Population	34	45
Number of New Breakthrough Cases	113	125
Hospitalizations**	9	5
Deaths**	1	2

- Completed Vaccination Total through 05/01/2022: 300,084 persons

\*For definition and specifics on metrics summarized, please refer to corresponding sections.

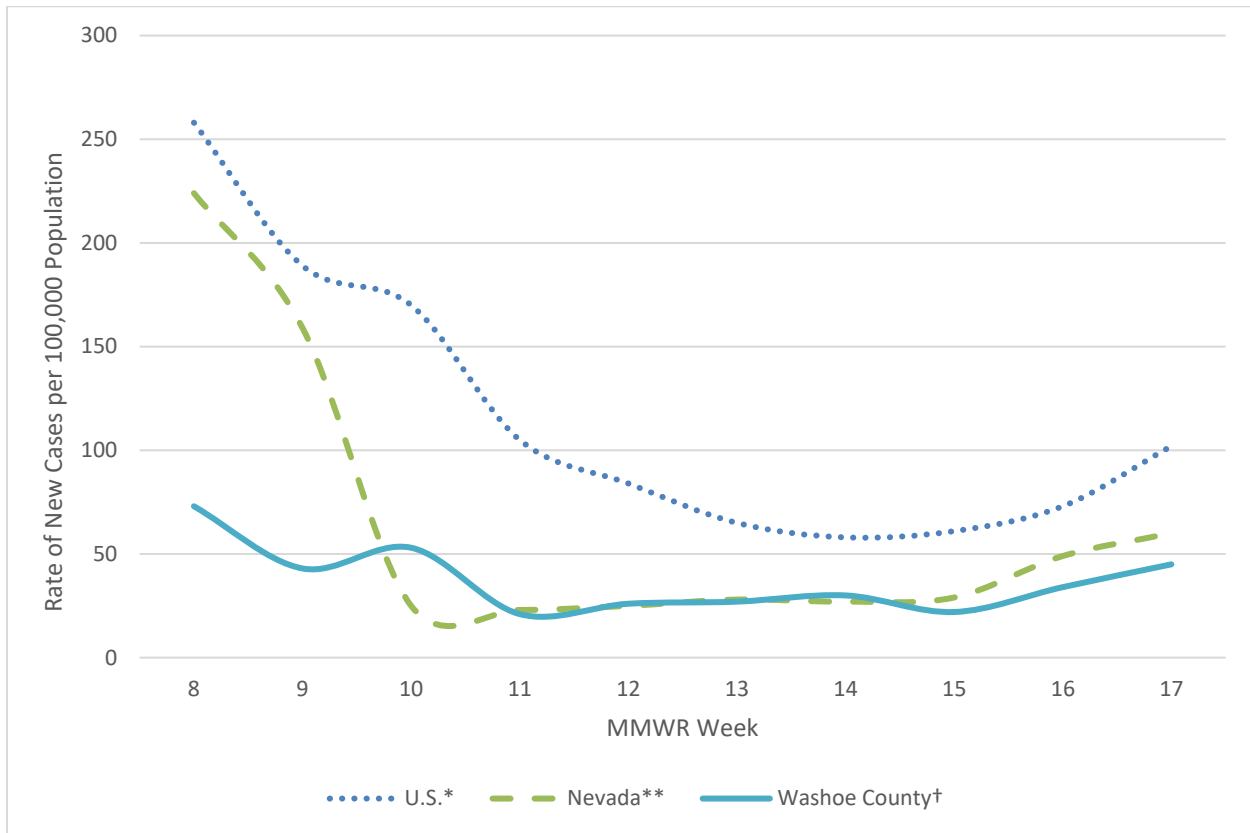
\*\*Note: hospitalization and death totals for each week are subject to change as new reports are received on a daily basis and are often delayed, causing underreporting in more recent MMWR weeks.

Key message(s)

- The number of cases reported in Washoe County have remained consistently low, however, from weeks 15 through 17 there has been a slight increase.
- In MMWR weeks 11 and 12 and weeks 16 and 17, there was no increase in the percentage of persons who are fully vaccinated in Washoe County.
- Only 28.7% of Washoe County’s population has received a booster dose.

## COVID-19 Case Information

**Figure 1. Rate of New Cases Reported by MMWR Week, Washoe County, Nevada, and the United States, 2022**



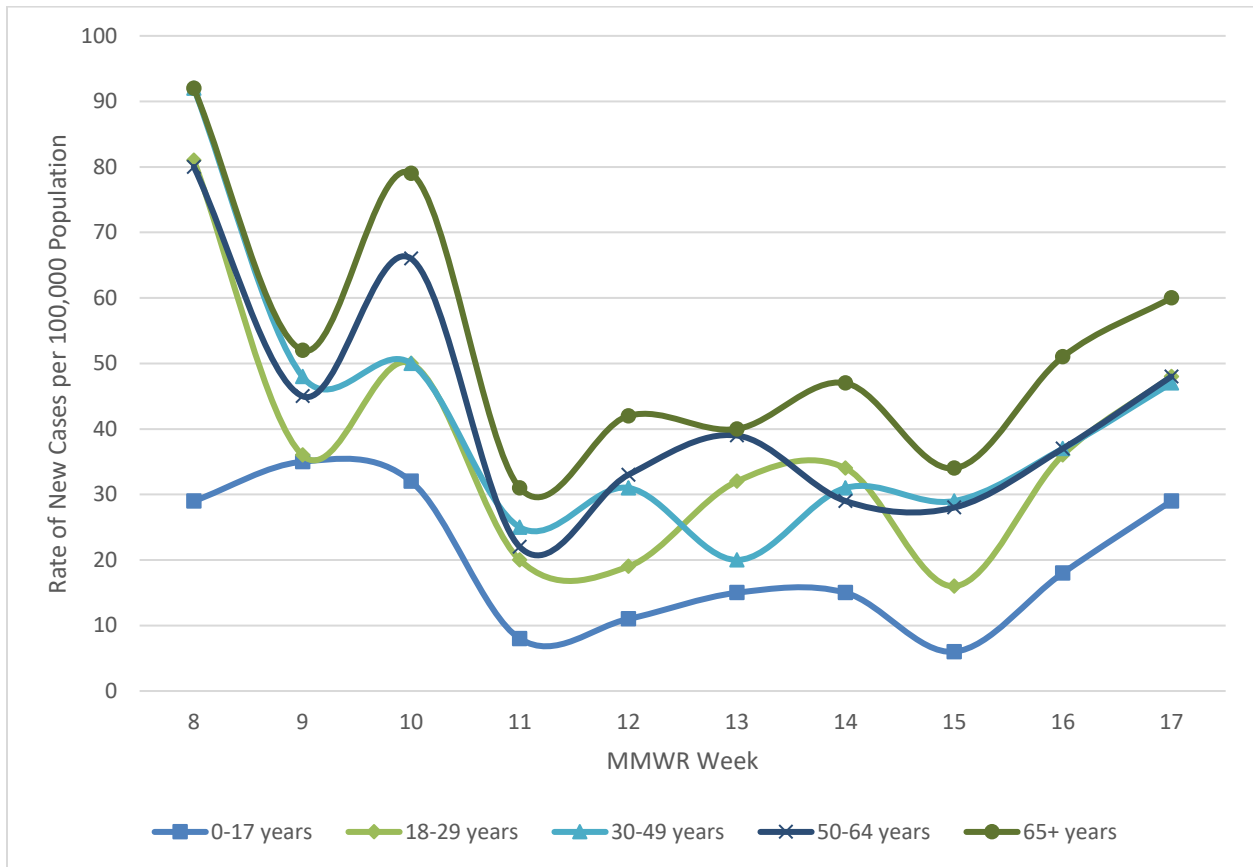
\*Data source: <https://data.cdc.gov/Public-Health-Surveillance/United-States-COVID-19-County-Level-of-Community-T/8396-v7yb>

\*\*Data source for weeks 8 and 9: <https://data.cdc.gov/Public-Health-Surveillance/United-States-COVID-19-County-Level-of-Community-T/8396-v7yb>. Data Source for weeks 10 through 17: <https://nvhealthresponse.nv.gov/#covid-data-tracker>.

†Data source: Internal, WCHD

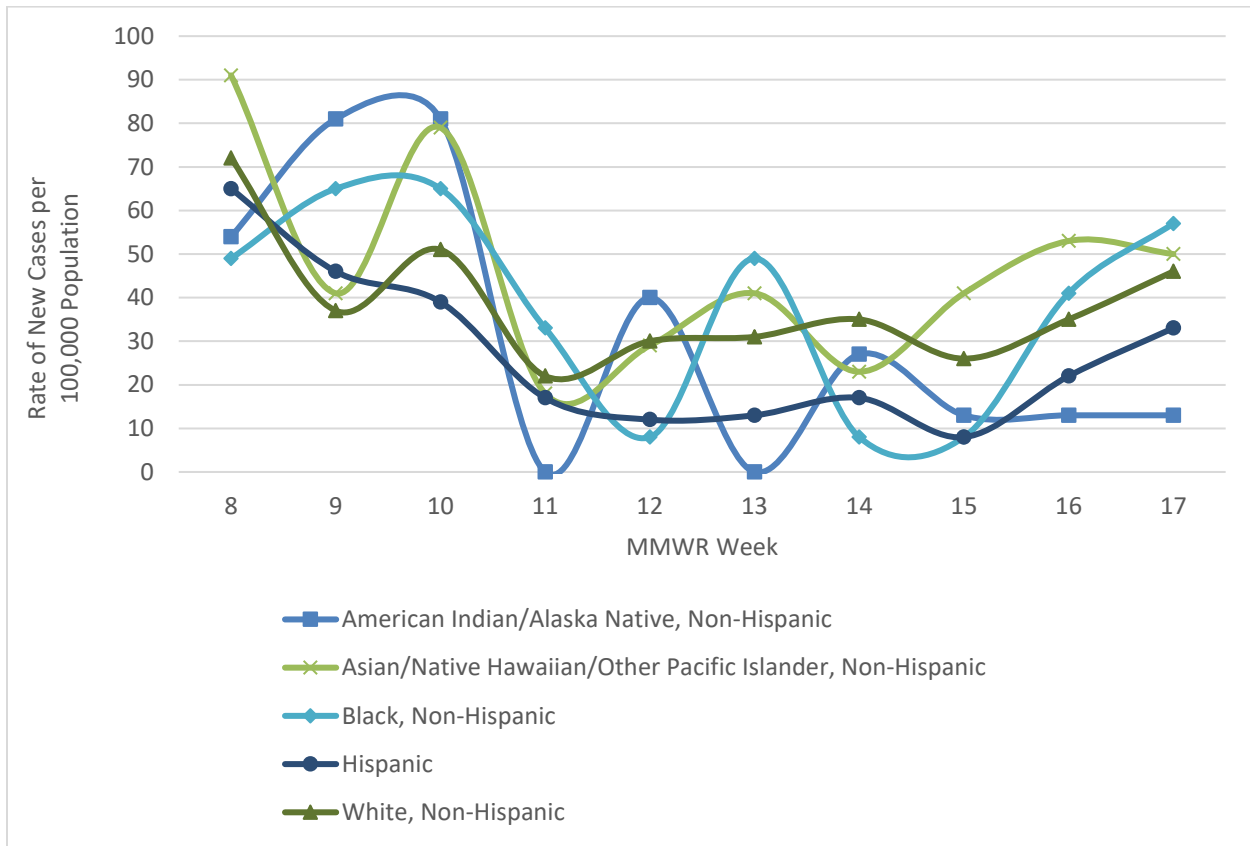
- In Washoe County, case counts decreased from a ten-week high of 73 new cases per 100,000 population in MMWR week 8 to 34 and 45 new cases per 100,000 population in MMWR weeks 16 and 17, respectively.
- In Nevada, case counts were at a ten-week high of 224 new cases per 100,000 population in MMWR week 8, but as of MMWR week 17, decreased to 60 new cases per 100,000 population.
- In the United States, case counts also decreased. During MMWR week 16 and week 17 there were 73 and 102 new cases per 100,000 population, respectively; a decline from the ten-week high of 258 new cases per 100,000 population in week 8.

**Figure 2. Rate of New Cases Reported by Age Group and MMWR Week, Washoe County, 2022**



- There was a steady increase in the rate of new cases reported across all age groups from weeks 15 through 17.
- The age group with the highest case rate during week 17 was the 65+ age group with 60 new cases per 100,000 population.
- The 0-17 age group had the lowest number of new cases during week 17 with 29 new cases per 100,000 population.

**Figure 3. Rate of New Cases Reported by Race/Ethnicity\* and MMWR Week, Washoe County, 2022**



\*Note: From MMWR week 8 to week 17, 5.1% of cases were recorded as “Declined to answer”, “Multiple”, “Other”, or “Unknown” and rates per 100,000 population are unable to be calculated for those categories.

- Over the past 10 weeks, there were large fluctuations in the rate of new cases reported by race/ethnicity, resulting in an overall decrease of new cases per 100,000 population among all race/ethnicity groups from weeks 8 through 15 and an increase in cases per 100,000 population in weeks 16 and 17.
- In week 17, those who identified as Black, Non-Hispanic had the highest rate of new cases per 100,000 population at 57 new cases per 100,000 population and those who identified as American Indian/Alaska Native, Non-Hispanic had the lowest rate of new cases per 100,000 population at 13 new cases per 100,000 population.

## Hospitalizations, ICU Status, & Deaths

COVID-19 hospitalizations are defined as those hospitalized for greater than or equal to 24 hours and have a positive SARS-CoV-2 laboratory test.

COVID-19 deaths are defined as decedents who have had a positive PCR COVID-19 lab report  $\leq$  30 days from death or post-mortem. This includes deaths attributed to COVID-19 related illnesses and, if not specifically listed on death certificate, a positive PCR COVID-19 lab, dependent on the manner of death. See full definition in Glossary/Key Terms at the end of the report.

**Table 1. Number and Percent of New Cases Reported by Age and Hospitalization Status, MMWR Weeks\* 16 and 17, Washoe County, 2022**

			Age Group				
			0-17	18-29	30-49	50-64	65+
MMWR Week	16	Total Cases	19	29	45	32	40
		% Hospitalized	10.5%	0.0%	2.2%	0.0%	15.0%
	17	Total Cases	31	39	58	42	47
		% Hospitalized	0.0%	0.0%	3.4%	0.0%	6.4%

\* Note: hospitalization totals for each week are subject to change as new reports are received on a daily basis and are often delayed, causing underreporting in more recent MMWR weeks.

- During MMWR week 16, the age groups with the highest percentage of total cases resulting in hospitalization were those 0-17 and 65+ years of age.
- During MMWR week 17, the age group with the highest percentage of total cases resulting in hospitalization were those 65+, followed by those 30-49 years of age.

**Table 2. Number and Percentage of Cases Reported by Hospitalization and ICU Status by MMWR Week\*, Washoe County, 2022**

MMWR Week	New Cases	Hospitalized		ICU	
		#	%	#	%
8	350	20	5.7	4	1.1
9	206	17	8.3	6	2.9
10	255	21	8.2	2	0.8
11	99	7	7.1	0	0.0
12	127	9	7.1	1	0.8
13	131	11	8.4	3	2.3
14	143	5	3.5	1	0.7
15	105	1	1.0	0	0.0
16	165	9	5.5	1	0.6
17	217	5	2.3	0	0.0

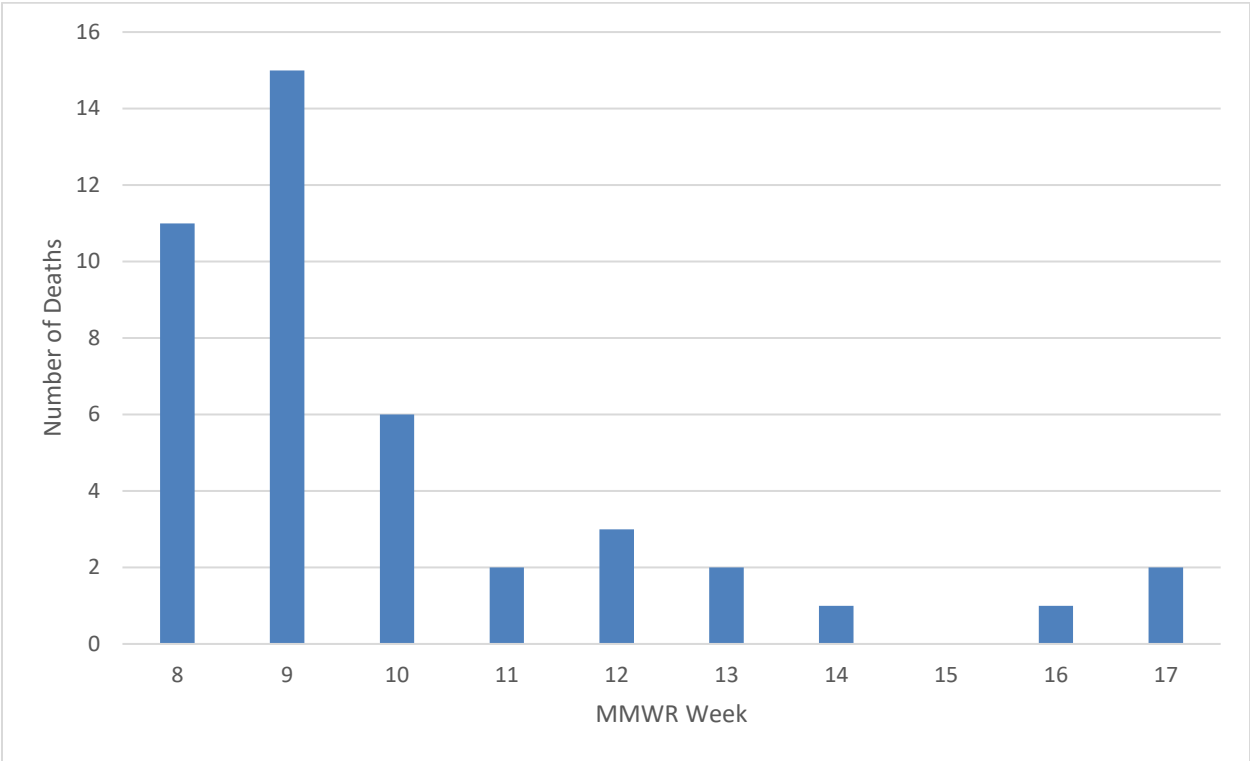
\*Note: hospitalization and ICU totals for each week are subject to change as new reports are received on a daily basis and are often delayed, causing underreporting in more recent MMWR weeks.

**Table 3. COVID-19 Deaths by Age Group and Time Period\* of Death, Washoe County, 2020-2022**

Time Period	Total Deaths	0-17 years	18-29 years	30-49 years	50-64 years	65+ years
2020 March - December	510	1	2	31	85	391
2021 Total	526	1	6	57	120	342
2022 January	79	0	1	6	13	59
2022 February	59	0	1	5	16	37
2022 March	25	0	0	0	2	23
2022 April	5	0	0	0	0	5

\*Note: death totals are subject to change as new reports are received on a daily basis and are often delayed, causing underreporting in more recent months.

**Figure 4. Number of Deaths Occurring by MMWR Week\*, Washoe County, 2022**



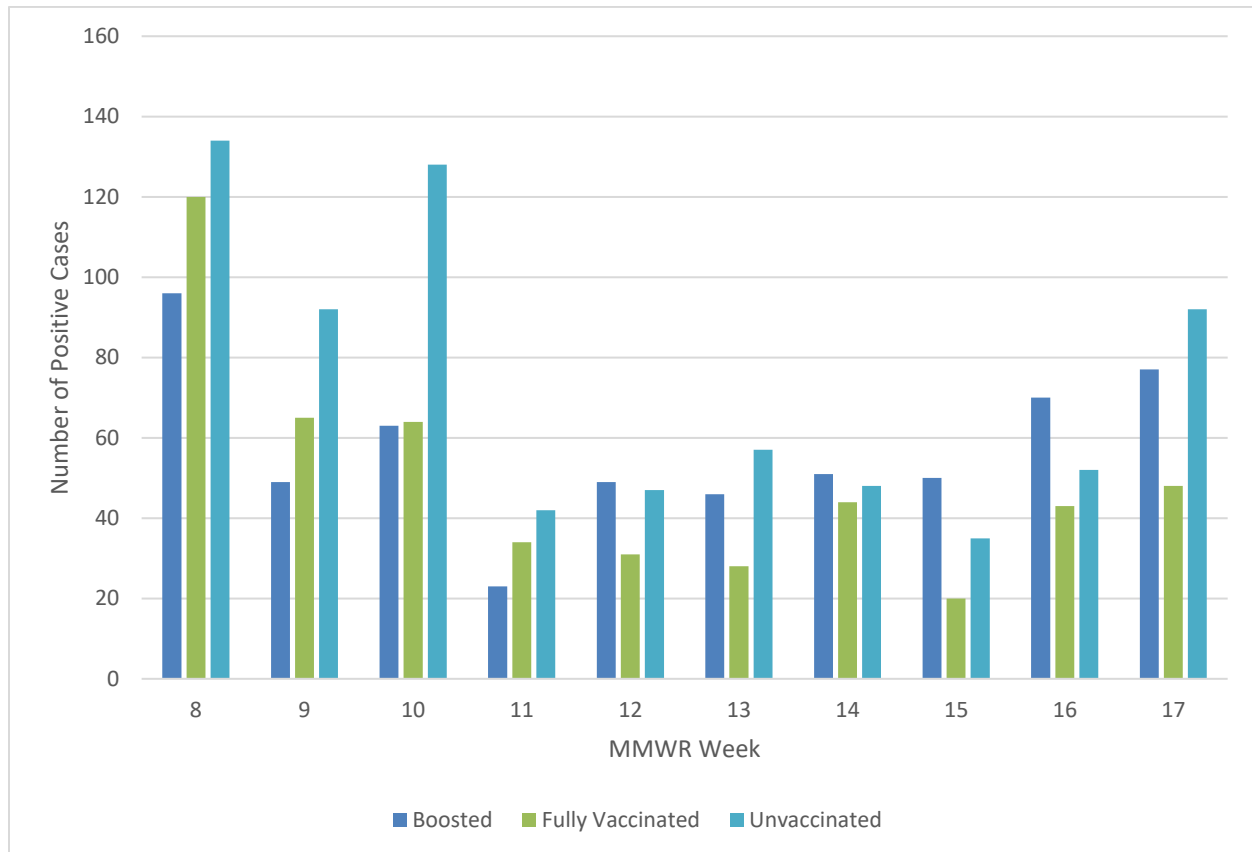
\*Note: death totals for each week are subject to change as new reports are received on a daily basis and are often delayed, causing underreporting in more recent MMWR weeks.

- At the time of publication, there have not been any deaths reported to have occurred during MMWR week 15.

## Breakthrough Cases

A breakthrough COVID-19 case is defined as a Washoe County resident who has SARS-CoV-2 PCR or antigen detected through laboratory testing 14 or more days after completing the primary series of an FDA-authorized COVID-19 vaccine.

**Figure 5. Number of Cases by Vaccination Status and MMWR Week\*, Washoe County, 2022**



\*Note: vaccination data for each week are subject to change as vaccinations are updated on a daily basis and are often on a delay internally, causing underreporting in more recent MMWR weeks.

- In recent weeks, cases that were boosted or unvaccinated composed higher percentages of total cases than those who were fully vaccinated.
- During MMWR week 16, 26.1% (n = 43) of new cases were fully vaccinated, while 31.5% (n = 52) and 42.4% (n = 70) of new cases were unvaccinated and boosted, respectively.
- During week 17, the fully vaccinated group represented 22.1% (n = 48) of newly reported cases, while individuals who were unvaccinated represented 42.4% (n = 92) and boosted individuals represented 35.5% (n = 77) of newly reported cases.



**Table 4. Number and Percentage of Cases Reporting Hospitalization and ICU by Vaccination Status and MMWR Week\*, Washoe County, 2022**

All Cases				Unvaccinated Cases				Breakthrough Cases			
MMWR Week	New Cases	Total Hospitalized	Total ICU	Hospitalized		ICU		Hospitalized		ICU	
				#	% <sup>a</sup>	#	% <sup>b</sup>	#	% <sup>a</sup>	#	% <sup>b</sup>
8	350	20	4	11	55.0	1	25.0	9	45.0	3	75.0
9	206	17	6	9	52.9	2	33.3	8	47.1	4	66.7
10	255	21	2	14	66.7	2	100.0	7	33.3	0	0.0
11	99	7	0	5	71.4	0	0.0	2	28.6	0	0.0
12	127	9	1	5	55.6	0	0.0	4	44.4	1	100.0
13	131	11	3	6	54.5	1	33.3	5	45.5	2	66.7
14	143	5	1	4	80.0	1	100.0	1	20.0	0	0.0
15	105	1	0	1	100.0	0	0.0	0	0.0	0	0.0
16	165	9	1	4	44.4	0	0.0	5	55.6	1	100.0
17	217	5	0	3	60.0	0	0.0	2	40.0	0	0.0

\*Note: hospitalization and ICU totals for each week are subject to change as new reports are received on a daily basis and are often delayed, causing underreporting in more recent MMWR weeks.

<sup>a</sup> Calculated as the percentage of Total Hospitalizations by vaccination status for the MMWR week.

<sup>b</sup> Calculated as the percentage of Total ICU by vaccination status for the MMWR week.

## Vaccinations

Current dose and vaccination totals and percentages for Washoe County residents; data as of 05/02/2022.

**159,346** doses reported as administered per 100,000 population (to date)

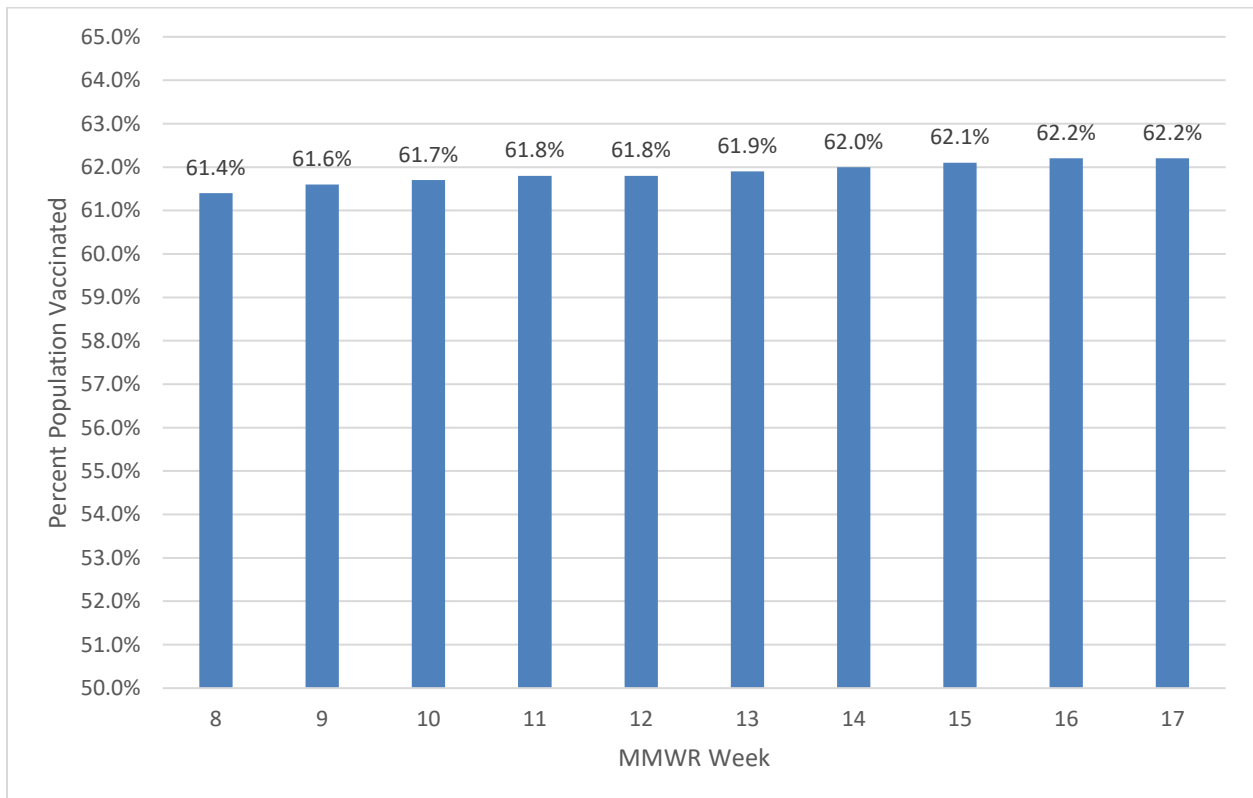
**70,202** (70.2% of population) vaccinations reported as initiated per 100,000 population

**62,239** (62.2% of population) vaccinations reported as completed per 100,000 population

**75.8%** of population 5 years and older initiated vaccination

**67.2%** of population 5 years and older completed vaccination

**Figure 6. Percentage of Population Fully Vaccinated, Washoe County, 2022**



**Table 5. Percentage of Population Vaccinated by Sex, Age Group, and Race/Ethnicity\*, Washoe County, 2021-2022**

Select Demographics		% Population Fully Vaccinated
Sex	Female	66.0%
	Male	60.0%
Age Group	0-17 years	28.7%
	18-29 years	63.5%
	30-49 years	67.4%
	50-64 years	79.0%
	65+ years	85.5%
Race / Ethnicity*	American Indian/Alaska Native, Non-Hispanic**	33.3%
	Asian/Native Hawaiian/Other Pacific Islander, Non-Hispanic	46.0%
	Black, Non-Hispanic	37.5%
	Hispanic	49.3%
	White, Non-Hispanic	50.0%

\*Note: 22.4% of the total vaccinated population were recorded as “Unknown” or “Other” and therefore population percentages are unable to be calculated for those categories. Additionally, 1.3% of the total Washoe County population had missing demographic information and therefore were not included in the overall calculations.

\*\*Note: Tribal populations may be underrepresented as the data source does not include Indian Health Services (IHS) data, which may contain vaccination records for tribal members and those who access services through IHS clinics.

- In Washoe County, the age group with the highest vaccination rates are those 65+ years (85.5%), followed by the 50-64 age group (79.0%).
- In Washoe County, those who identify as White, Non-Hispanic have the highest percent vaccinated (50.0%), followed by Hispanic (49.3%) and Asian/Native Hawaiian/Other Pacific Islander, Non-Hispanic (46.0%).

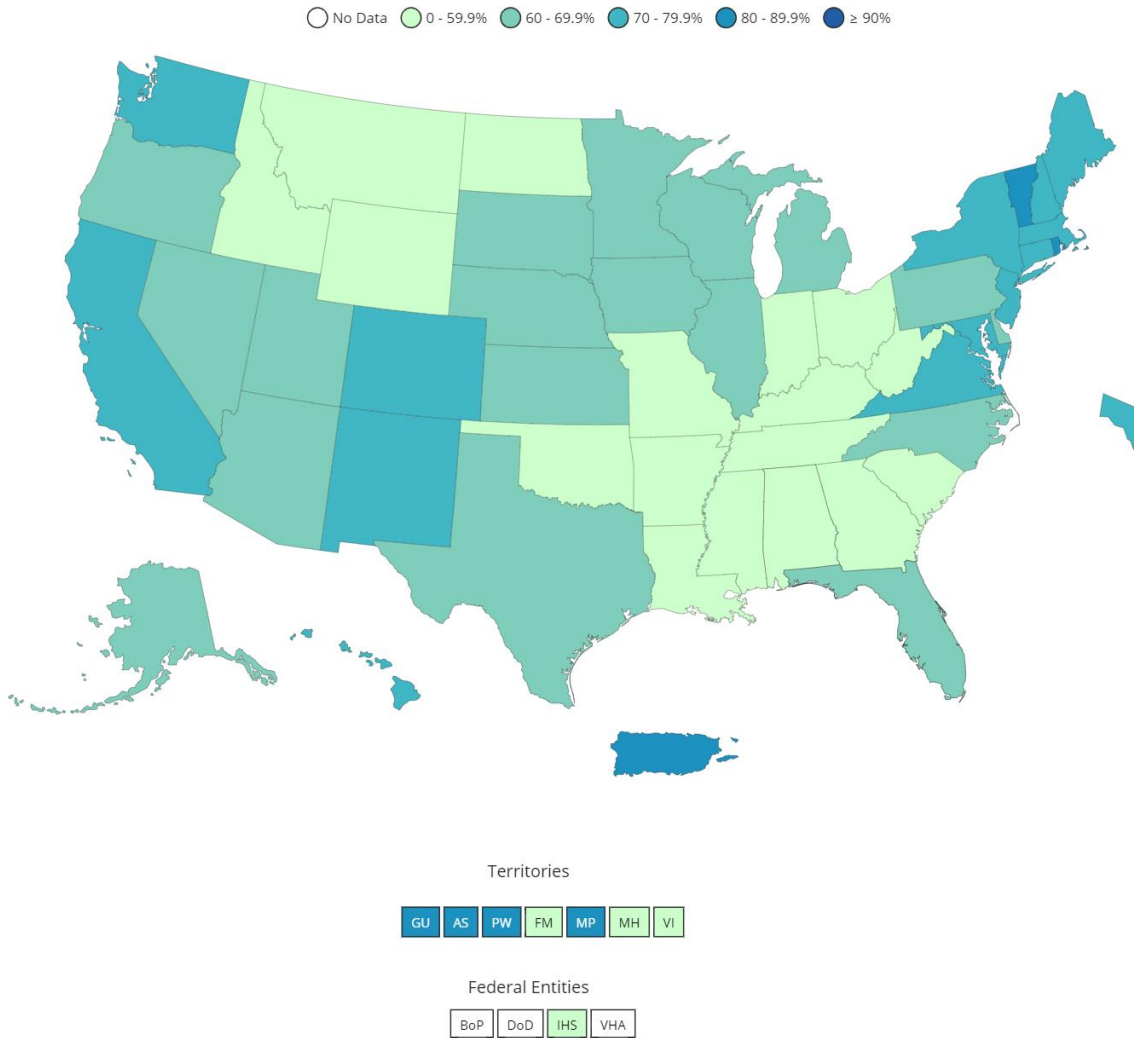
**Table 6. Percentage of Total Population Fully Vaccinated and Boosted by Washoe County, Nevada, and the United States, 2021-2022**

	% Population Fully Vaccinated	% Population Boosted
United States*	66.2	30.3
Nevada*	60.8	23.5
Washoe County**	62.2	28.7

\* Data Source: [https://covid.cdc.gov/covid-data-tracker/#vaccinations\\_vacc-people-fully-percent-total](https://covid.cdc.gov/covid-data-tracker/#vaccinations_vacc-people-fully-percent-total) as of 05/02/2022.

\*\* Data Source: WebIZ as of 05/02/2022.

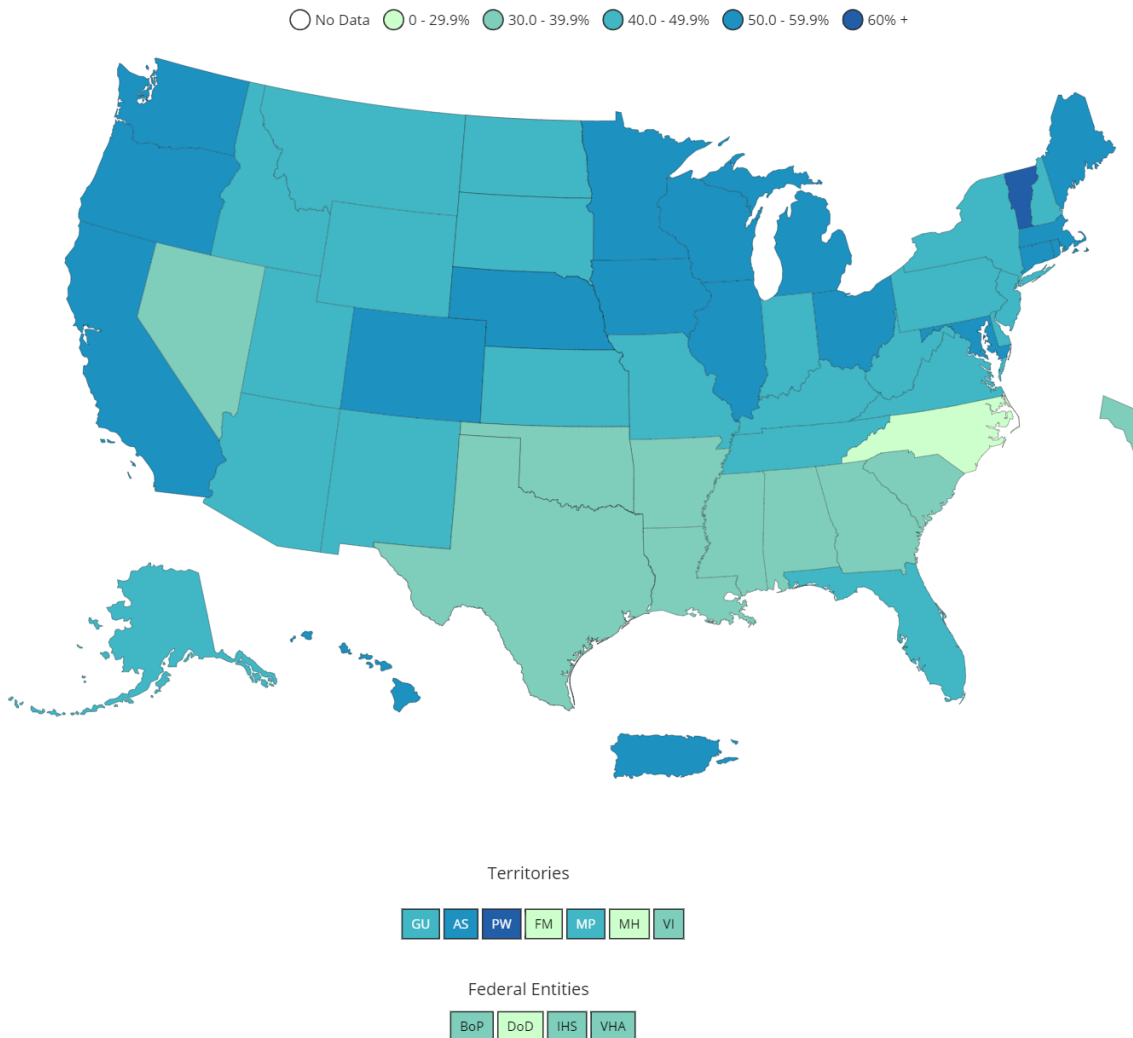
**Figure 7. Percent of People Fully Vaccinated Reported to the CDC by State/Territory and for Select Federal Entities for the Total Population**



Data for Federal Entities are presented here and are also incorporated into the respective jurisdictional totals

Data source for U.S. map for fully vaccinated people reported to the CDC, as of 05/02/2022 6:00 AM ET. Posted: Monday, May 2, 2022, 4:54 PM ET, CDC COVID Data Tracker [https://covid.cdc.gov/covid-data-tracker/#vaccinations\\_vacc-people-fully-percent-total](https://covid.cdc.gov/covid-data-tracker/#vaccinations_vacc-people-fully-percent-total)

**Figure 8. Percent of Fully Vaccinated People with a First Booster Dose Reported to the CDC by State/Territory or Select Federal Entities for the Total Population**



Data for Federal Entities are presented here and are also incorporated into the respective jurisdictional totals

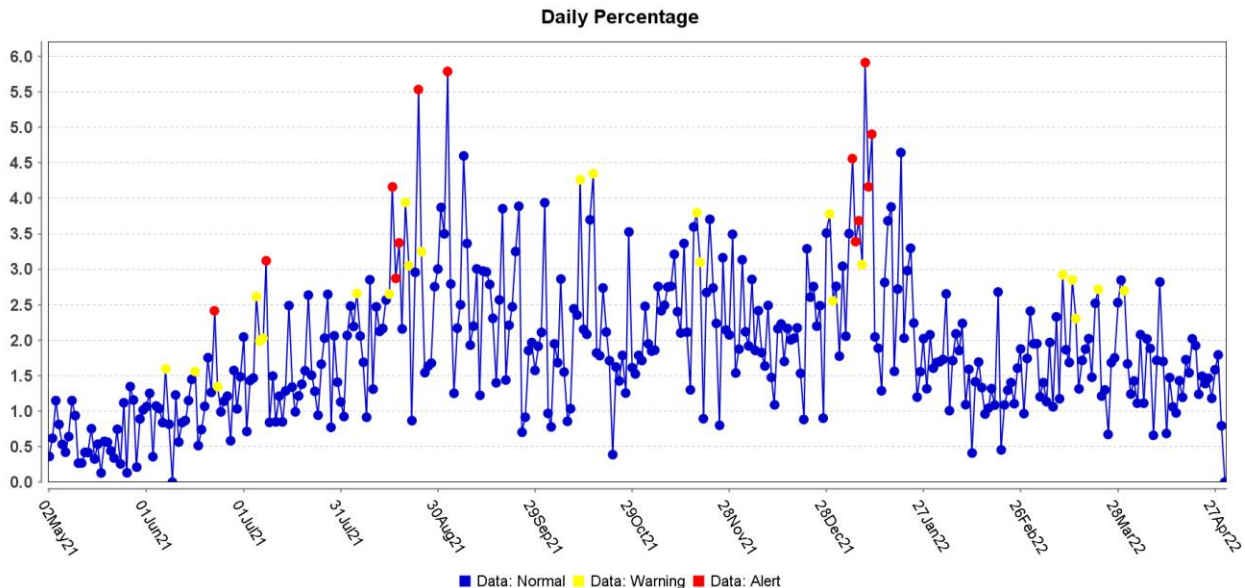
Data source for U.S. map for fully vaccinated people with a booster dose reported to the CDC, as of 05/02/2022 6:00 AM ET. Posted: Monday, May 2, 2022, 4:54 PM ET, CDC COVID Data Tracker [https://covid.cdc.gov/covid-data-tracker/#vaccinations\\_vacc-people-additional-dose-totalpop](https://covid.cdc.gov/covid-data-tracker/#vaccinations_vacc-people-additional-dose-totalpop)

Note: Percent of fully vaccinated people with a booster dose is a different metric than percentage of total population who received a booster dose provided in Table 6.

## Surveillance Data

Percentage of persons indicating COVID-19 as the reason for visit to the Emergency Room (ER) is presented in Figure 9. The overlay below depicts COVID-19 in blue. Alerts appear as yellow and/or red dots. They indicate an unusually high percentage of COVID-19 visits according to ESSENCE algorithms.

**Figure 9. Percentage of ER Visits Due to COVID in the Last Year, Washoe County**



Data source: ESSENCE

## Glossary/Key Terms

### COVID-19 Case

Coronavirus Disease 2019 (COVID-19) cases counted in this document are confirmed or probable cases as determined by meeting confirmatory laboratory evidence, clinical criteria, and/or epidemiologic linkage as defined on the CDC website here:

<https://ndc.services.cdc.gov/case-definitions/coronavirus-disease-2019-2021/>

### COVID-19 Hospitalization

COVID-19 hospitalizations are counted as those hospitalized for greater than or equal to 24 hours and have a positive SARS-CoV-2 laboratory test.

### COVID-19 Death

As of January 1, 2022, both Confirmed and Probable COVID-19-associated deaths are included in the count.

- ([https://cdn.ymaws.com/www.cste.org/resource/resmgr/pdfs/pdfs2/20211222\\_interim-guidance.pdf](https://cdn.ymaws.com/www.cste.org/resource/resmgr/pdfs/pdfs2/20211222_interim-guidance.pdf))

Criteria for confirmed case death:

- The case meets the confirmed COVID-19 surveillance case definition, AND at least ONE of the following criteria is met:

- A case investigation determined that COVID-19 was the cause of death or contributed to the death.
- The death certificate indicates COVID-19 or an equivalent term as one of the causes of death, regardless of the time elapsed since specimen collection of the confirmatory laboratory test used to define the case.
- The death occurred within (and including) 30 days of specimen collection for the confirmatory laboratory test used to define the case and was due to natural causes (e.g., the Manner of Death is coded as “natural” on the death certificate.)

Criteria for probable case death:

- The case meets the probable COVID-19 case definition AND a case investigation determined that COVID-19 was the cause of death or contributed to the death; **OR**
- The case meets the probable COVID-19 surveillance case definition based on presumptive laboratory evidence AND death occurred within (and including) 30 days of specimen collection and was due to natural causes (e.g., the Manner of Death is coded as “natural” on the death certificate.); **OR**
- The case meets the probable COVID-19 surveillance case definition based on epidemiologic linkage and meeting clinical criteria, AND death occurred within (and including) 30 days of symptom onset and was due to natural causes (e.g., the Manner of Death is coded as “natural” on the death certificate.); **OR**
- The case meets the probable COVID-19 surveillance case definition based only on vital records criteria (i.e., a death certificate that lists COVID-19 disease or SARS-CoV-2 or an equivalent term as an underlying cause of death or a significant condition contributing to death and there is no confirmatory or presumptive laboratory evidence.)

## Links

### **WCHD COVID Dashboard**

<https://washoe.maps.arcgis.com/apps/dashboards/0db36fa8fa9c47758bc38210e4c23818>

### **WCHD website for COVID information and vaccine appointments**

<https://covid19washoe.com/>

**CDC COVID Data Tracker** <https://covid.cdc.gov/covid-data-tracker/>

### **Nevada State Public Health Laboratory created a new COVID-19 variant web page**

<https://www.nvsarscov2variant.com/variants>

### **Department of Health and Human Services Nevada Division of Public and Behavioral Health (DPBH) Technical Bulletins**

[https://dphh.nv.gov/Resources/Technical\\_Bulletins-New/](https://dphh.nv.gov/Resources/Technical_Bulletins-New/)

**WCHD COVID reports** <https://covid19washoe.com/daily-updates/washoe-county-covid-19-data-report/>