

COVID-19 Epidemiology Surveillance Program
MMWR Week #28 – 29, July 10 – July 23, 2022

Division of Epidemiology & Public Health Preparedness (EHP) 775-328-2447

Adam Vazquez, MPH, COVID-19 Epidemiologist AVazquez@washoecounty.gov

Lissa Callahan, COVID-19 Statistician LCallahan@washoecounty.gov

Weekly Summary*

Metrics	MMWR Week 28	MMWR Week 29
Number of New Cases	1,379	948
New Cases per 100,000 Population	286	197
Number of New Breakthrough Cases	631	405
Hospitalizations**	41	24
Deaths**	1	2

- Completed Vaccination Total through 07/25/2022: 303,862 persons

*For definition and specifics on metrics summarized, please refer to corresponding sections.

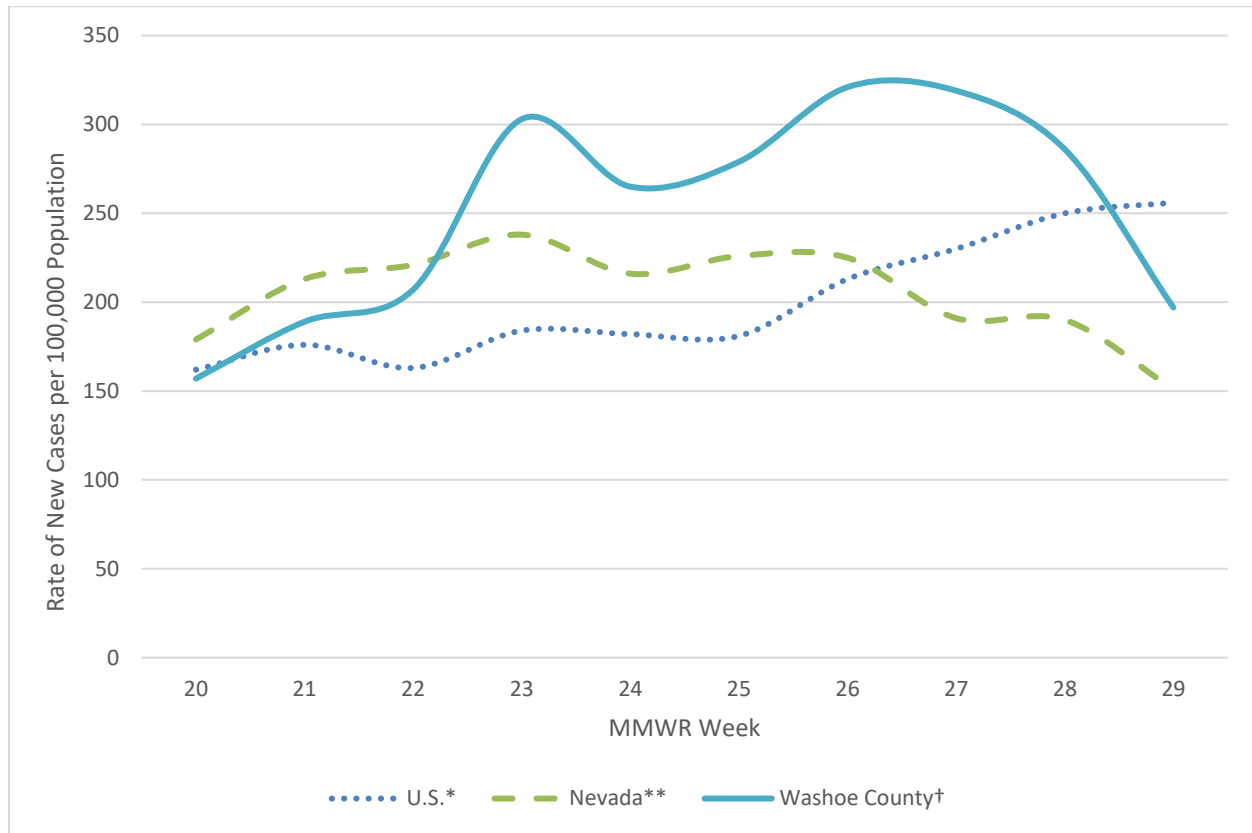
**Note: hospitalization and death totals for each week are subject to change as new reports are received on a daily basis and are often delayed, causing underreporting in more recent MMWR weeks.

Key message(s)

- The number of cases reported in Washoe County have decreased from MMWR week 26 through MMWR week 29.
- Only 30.2% of Washoe County’s population has received a booster dose.

COVID-19 Case Information

Figure 1. Rate of New Cases Reported by MMWR Week, Washoe County, Nevada, and the United States, 2022



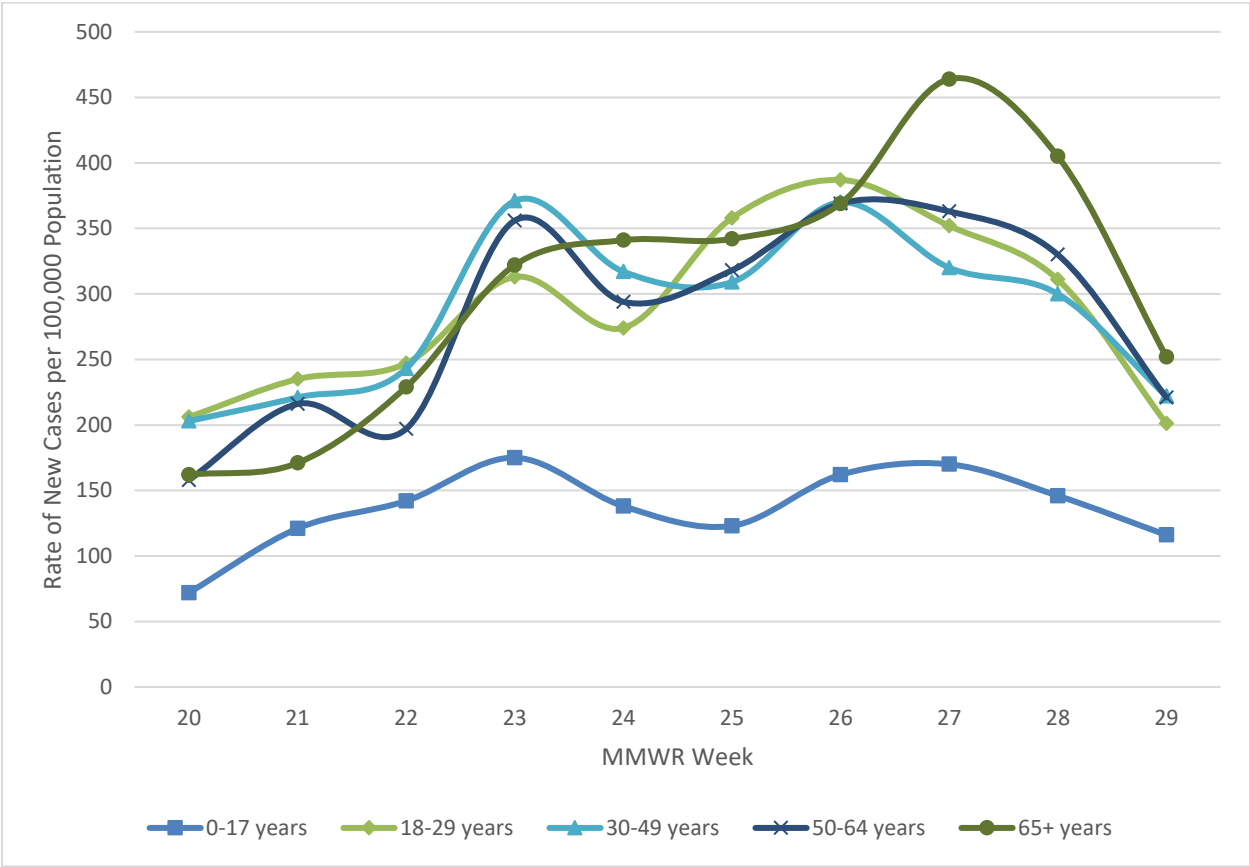
*Data source: <https://data.cdc.gov/Public-Health-Surveillance/United-States-COVID-19-County-Level-of-Community-T/8396-v7yb>, data by date reported

**Data Source: <https://nvhealthresponse.nv.gov/#covid-data-tracker>, data by sample collection date

†Data source: Internal, WCHD, data by date reported

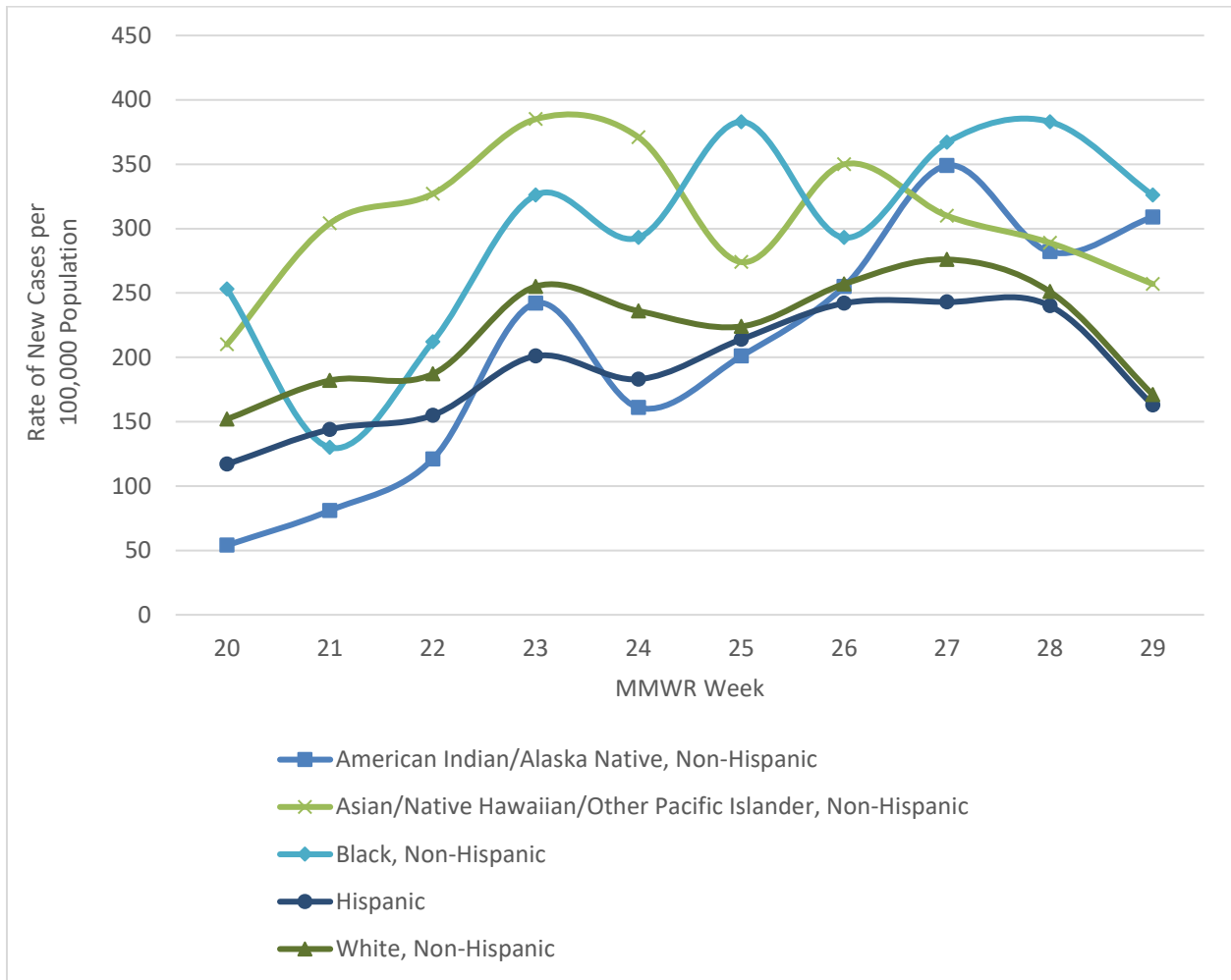
- In Washoe County, case counts decreased from a ten-week high of 321 new cases per 100,000 population in MMWR week 26 to 197 new cases per 100,000 population in MMWR week 29.
- In Nevada, case counts decreased from 238 new cases per 100,000 population in MMWR week 23 to 151 new cases per 100,000 population in MMWR week 29.
- In the United States, case counts increased overall. During MMWR week 28 and MMWR week 29 there were 250 and 256 new cases per 100,000 population, respectively, which is an increase from the ten-week low of 162 new cases per 100,000 population in MMWR week 20.

Figure 2. Rate of New Cases Reported by Age Group and MMWR Week, Washoe County, 2022



- The age group with the highest case rate during MMWR week 29 was the 65+ age group with 252 new cases per 100,000 population, which is a decrease from a ten-week high in MMWR week 27 of 464 new cases per 100,000 population.
- The age group with the lowest case rate during MMWR week 27 was the 0-17 age group with 116 new cases per 100,000 population.

Figure 3. Rate of New Cases Reported by Race/Ethnicity* and MMWR Week, Washoe County, 2022



*Note: From MMWR week 20 to MMWR week 29, 14.1% of cases were recorded as “Declined to answer”, “Multiple”, “Other”, or “Unknown” and rates per 100,000 population are unable to be calculated for those categories.

- In MMWR week 29, those who identified as Black, Non-Hispanic had the highest rate of new cases at 326 new cases per 100,000 population.
- From MMWR weeks 27 through 29, those who identified as White, Non-Hispanic decreased from 276 to 171 cases per 100,000 population.
- In MMWR week 29, those who identified as Hispanic had the lowest rate of new cases per 100,000 population at 163 new cases per 100,000 population.

Hospitalizations, ICU Status, & Deaths

COVID-19 hospitalizations are defined as those hospitalized for greater than or equal to 24 hours and have a positive SARS-CoV-2 laboratory test.

COVID-19 deaths are defined as decedents who have had a positive PCR COVID-19 lab report \leq 30 days from death or post-mortem. This includes deaths attributed to COVID-19 related illnesses and, if not specifically listed on death certificate, a positive PCR COVID-19 lab, dependent on the manner of death. See full definition in Glossary/Key Terms at the end of the report.

Table 1. Number and Percent of New Cases Reported by Age and Hospitalization Status, MMWR Weeks* 28 and 29, Washoe County, 2022

			Age Group				
			0-17	18-29	30-49	50-64	65+
MMWR Week	28	Total Cases	158	250	367	287	317
		% Hospitalized	2.5%	0.8%	1.4%	3.8%	6.0%
	29	Total Cases	125	162	272	192	197
		% Hospitalized	4.0%	0.6%	0.4%	0.5%	8.1%

* Note: hospitalization totals for each week are subject to change as new reports are received on a daily basis and are often delayed, causing underreporting in more recent MMWR weeks.

- During MMWR week 28, the age group with the highest percentage of total cases resulting in hospitalization were those 65+, followed by the 50-64 age group.
- During MMWR week 29, the age group with the highest percentage of total cases resulting in hospitalization were those 65+, followed by the 0-17 age group.

Table 2. Number and Percentage of Cases Reported by Hospitalization and ICU Status by MMWR Week*, Washoe County, 2022

MMWR Week	New Cases	Hospitalized		ICU	
		#	%	#	%
20	756	17	2.2	0	0.0
21	912	27	3.0	1	0.1
22	999	18	1.8	1	0.1
23	1,459	36	2.5	6	0.4
24	1,280	41	3.2	5	0.4
25	1,345	32	2.4	3	0.2
26	1,550	42	2.7	8	0.5
27	1,537	52	3.4	5	0.3
28	1,379	41	3.0	1	0.1
29	948	24	2.5	2	0.2

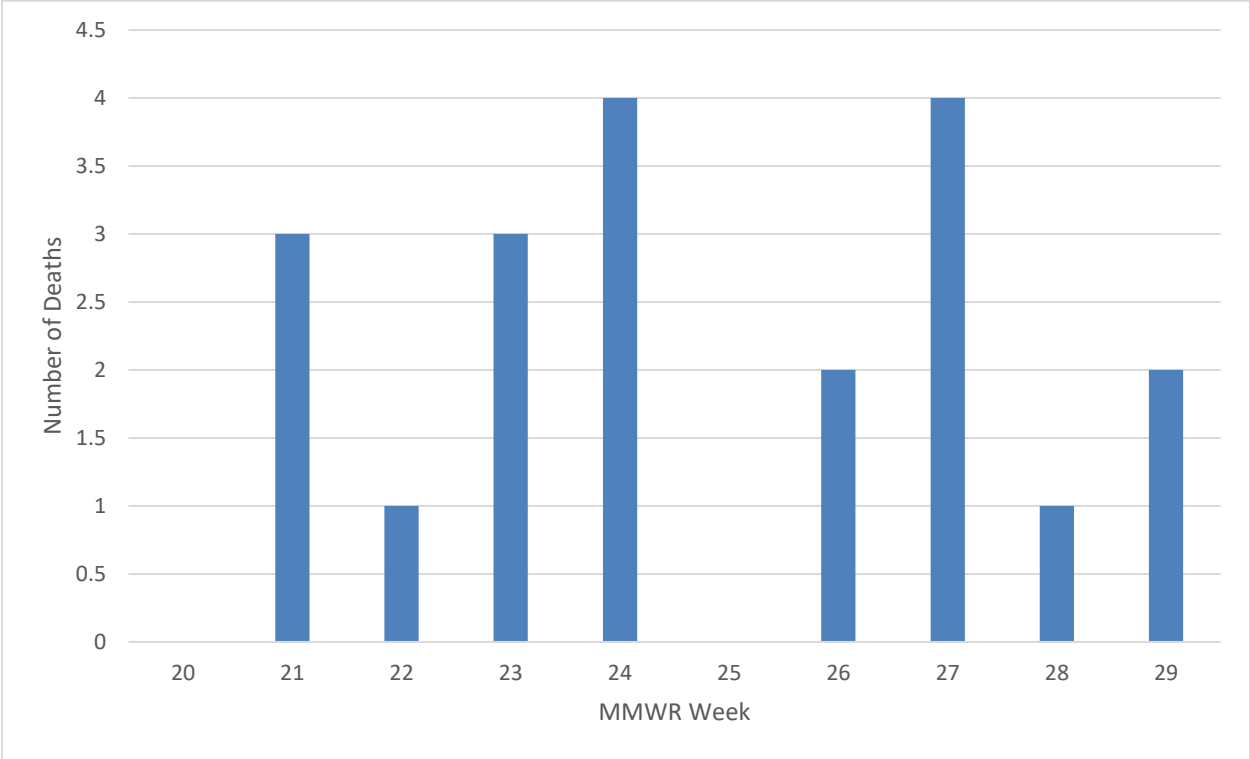
*Note: hospitalization and ICU totals for each week are subject to change as new reports are received on a daily basis and are often delayed, causing underreporting in more recent MMWR weeks.

Table 3. COVID-19 Deaths by Age Group and Time Period* of Death, Washoe County, 2020-2022

Time Period	Total Deaths	0-17 years	18-29 years	30-49 years	50-64 years	65+ years
2020 March - December	510	1	2	31	85	391
2021 Total	554	1	6	60	125	362
2022 January	85	0	1	6	14	64
2022 February	62	0	1	5	16	40
2022 March	25	0	0	0	2	23
2022 April	7	0	0	0	0	7
2022 May	6	0	0	2	0	4
2022 June	9	0	0	0	2	7

*Note: death totals are subject to change as new reports are received on a daily basis and are often delayed, causing underreporting in more recent months.

Figure 4. Number of Deaths Occurring by MMWR Week*, Washoe County, 2022



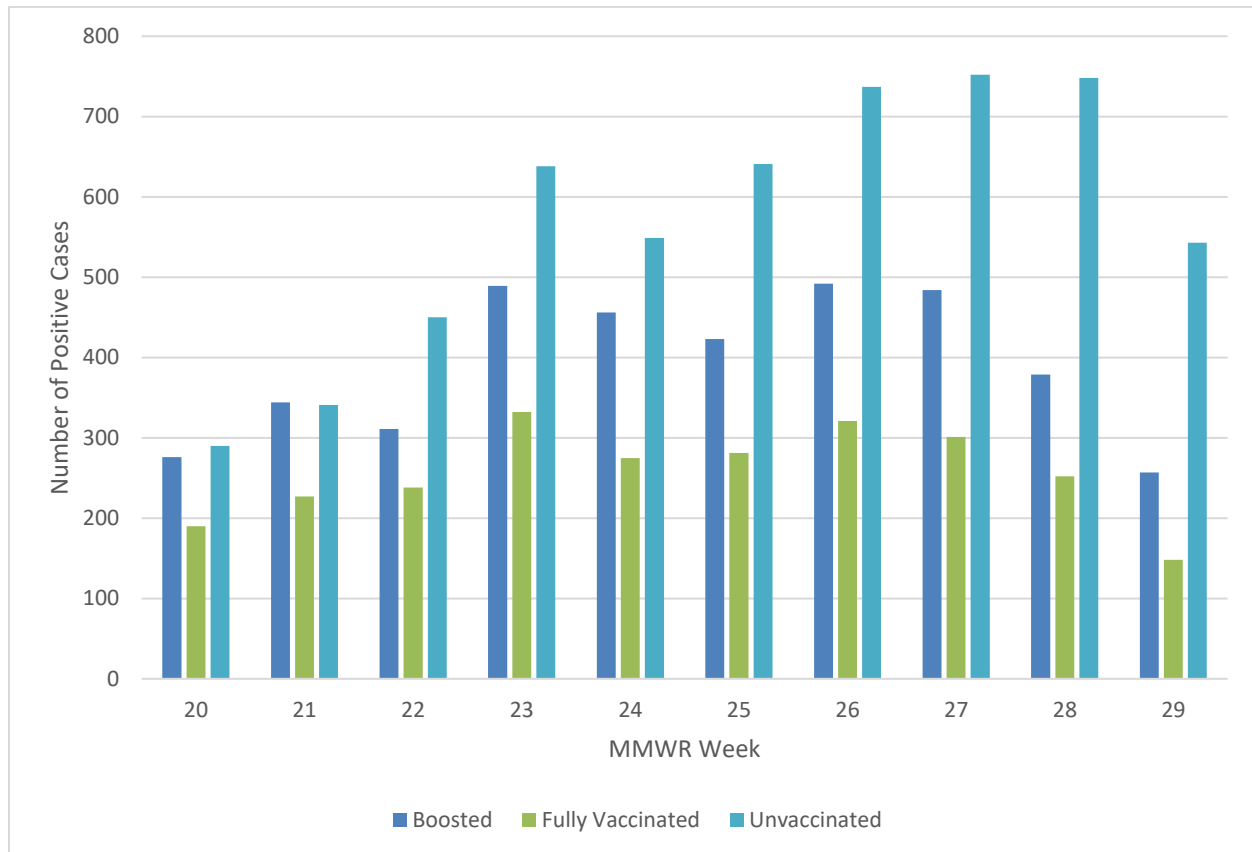
*Note: death totals for each week are subject to change as new reports are received on a daily basis and are often delayed, causing underreporting in more recent MMWR weeks.

- At the time of publication, there have not been any deaths reported to have occurred during MMWR weeks 20 and 25.

Breakthrough Cases

A breakthrough COVID-19 case is defined as a Washoe County resident who has SARS-CoV-2 PCR or antigen detected through laboratory testing 14 or more days after completing the primary series of an FDA-authorized COVID-19 vaccine.

Figure 5. Number of Cases by Vaccination Status and MMWR Week*, Washoe County, 2022



*Note: vaccination data for each week are subject to change as vaccinations are updated on a daily basis and are often on a delay internally, causing underreporting in more recent MMWR weeks.

- In recent weeks, cases that were unvaccinated composed higher percentages of total cases than those who were boosted or those who were fully vaccinated.
- During MMWR week 28, 54.2% (n = 748) of new cases were unvaccinated, while 27.5% (n = 379) and 18.3% (n = 252) of new cases were boosted and fully vaccinated, respectively.
- During MMWR week 29, the unvaccinated group represented 57.3% (n = 543) of newly reported cases, while individuals who were boosted represented 27.1% (n = 257) and fully vaccinated individuals represented 15.6% (n = 148) of newly reported cases.

Table 4. Number and Percentage of Cases Reporting Hospitalization and ICU by Vaccination Status and MMWR Week*, Washoe County, 2022

All Cases				Unvaccinated Cases				Breakthrough Cases			
MMWR Week	New Cases	Total Hospitalized	Total ICU	Hospitalized		ICU		Hospitalized		ICU	
				#	% ^a	#	% ^b	#	% ^a	#	% ^b
20	756	17	0	11	64.7	0	0.0	6	35.3	0	0.0
21	912	27	1	20	74.1	1	100.0	7	25.9	0	0.0
22	999	18	1	8	44.4	1	100.0	10	55.6	0	0.0
23	1,459	36	6	19	52.8	4	66.7	17	47.2	2	33.3
24	1,280	41	5	19	46.3	3	60.0	22	53.7	2	40.0
25	1,345	32	3	20	62.5	3	100.0	12	37.5	0	0.0
26	1,550	42	8	15	35.7	3	37.5	27	64.3	5	62.5
27	1,537	52	5	27	51.9	1	20.0	25	48.1	4	80.0
28	1,379	41	1	21	51.2	1	100.0	20	48.8	0	0.0
29	948	24	2	12	50.0	1	50.0	12	50.0	1	50.0

*Note: hospitalization and ICU totals for each week are subject to change as new reports are received on a daily basis and are often delayed, causing underreporting in more recent MMWR weeks.

^a Calculated as the percentage of Total Hospitalizations by vaccination status for the MMWR week.

^b Calculated as the percentage of Total ICU by vaccination status for the MMWR week.

Vaccinations

Current dose and vaccination totals and percentages for Washoe County residents; data as of 07/26/2022.

165,901 doses reported as administered per 100,000 population (to date)

71,068 (71.1% of population) vaccinations reported as initiated per 100,000 population

62,871 (62.9% of population) vaccinations reported as completed per 100,000 population

76.6% of population 5 years and older initiated vaccination

68.1% of population 5 years and older completed vaccination

Figure 6. Percentage of Population Fully Vaccinated and Boosted, Washoe County, 2022

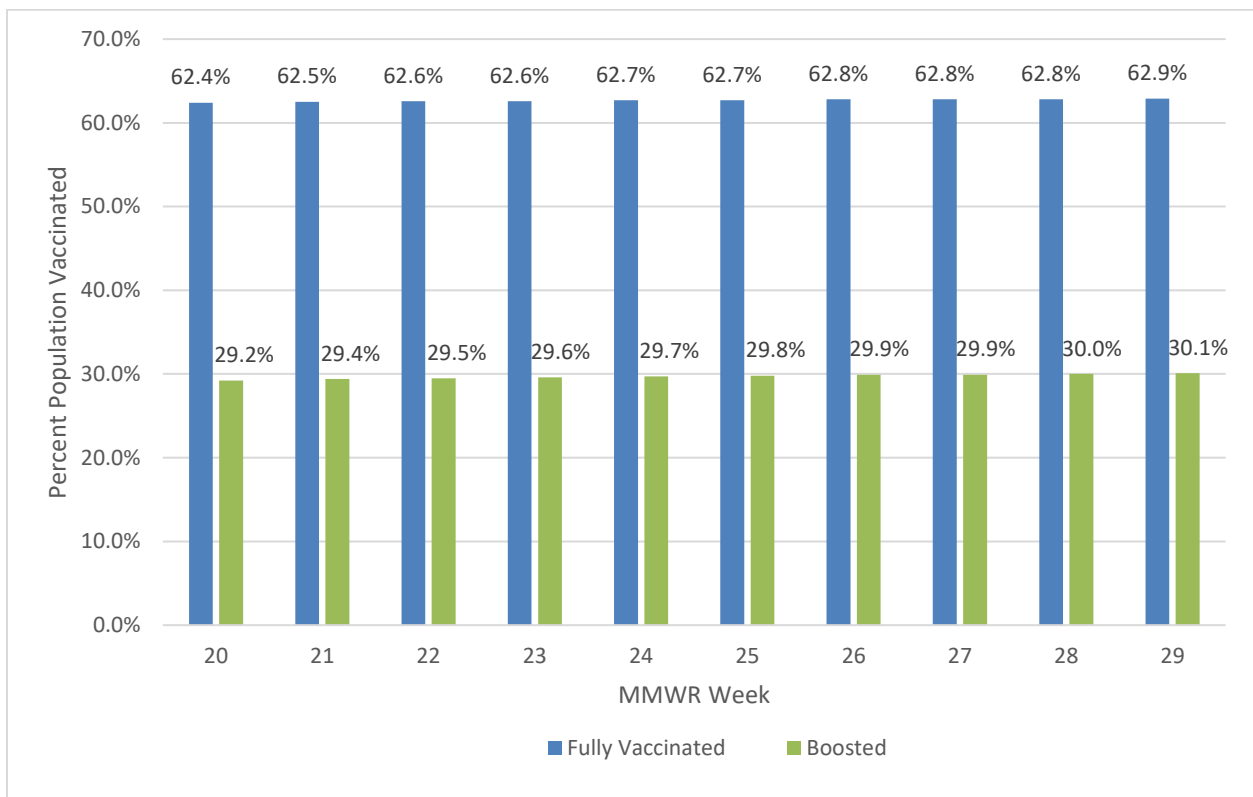


Table 5. Percentage of Population Vaccinated by Sex, Age Group, and Race/Ethnicity*, Washoe County, 2021-2022

Select Demographics		% Population Fully Vaccinated
Sex	Female	66.9%
	Male	60.8%
Age Group	0-17 years	29.7%
	18-29 years	64.2%
	30-49 years	67.9%
	50-64 years	79.9%
	65+ years	86.5%
Race / Ethnicity*	American Indian/Alaska Native, Non-Hispanic**	33.9%
	Asian/Native Hawaiian/Other Pacific Islander, Non-Hispanic	46.4%
	Black, Non-Hispanic	38.1%
	Hispanic	50.0%
	White, Non-Hispanic	50.6%

*Note: 22.4% of the total vaccinated population were recorded as “Unknown” or “Other” and therefore population percentages are unable to be calculated for those categories. Additionally, 1.3% of the total Washoe County population had missing demographic information and therefore were not included in the overall calculations.

**Note: Tribal populations may be underrepresented as the data source does not include Indian Health Services (IHS) data, which may contain vaccination records for tribal members and those who access services through IHS clinics.

- In Washoe County, the age group with the highest vaccination rates are those 65+ years (86.5%), followed by the 50-64 age group (79.9%).
- In Washoe County, those who identify as White, Non-Hispanic have the highest percent vaccinated (50.6%), followed by Hispanic (50.0%) and Asian/Native Hawaiian/Other Pacific Islander, Non-Hispanic (46.4%).

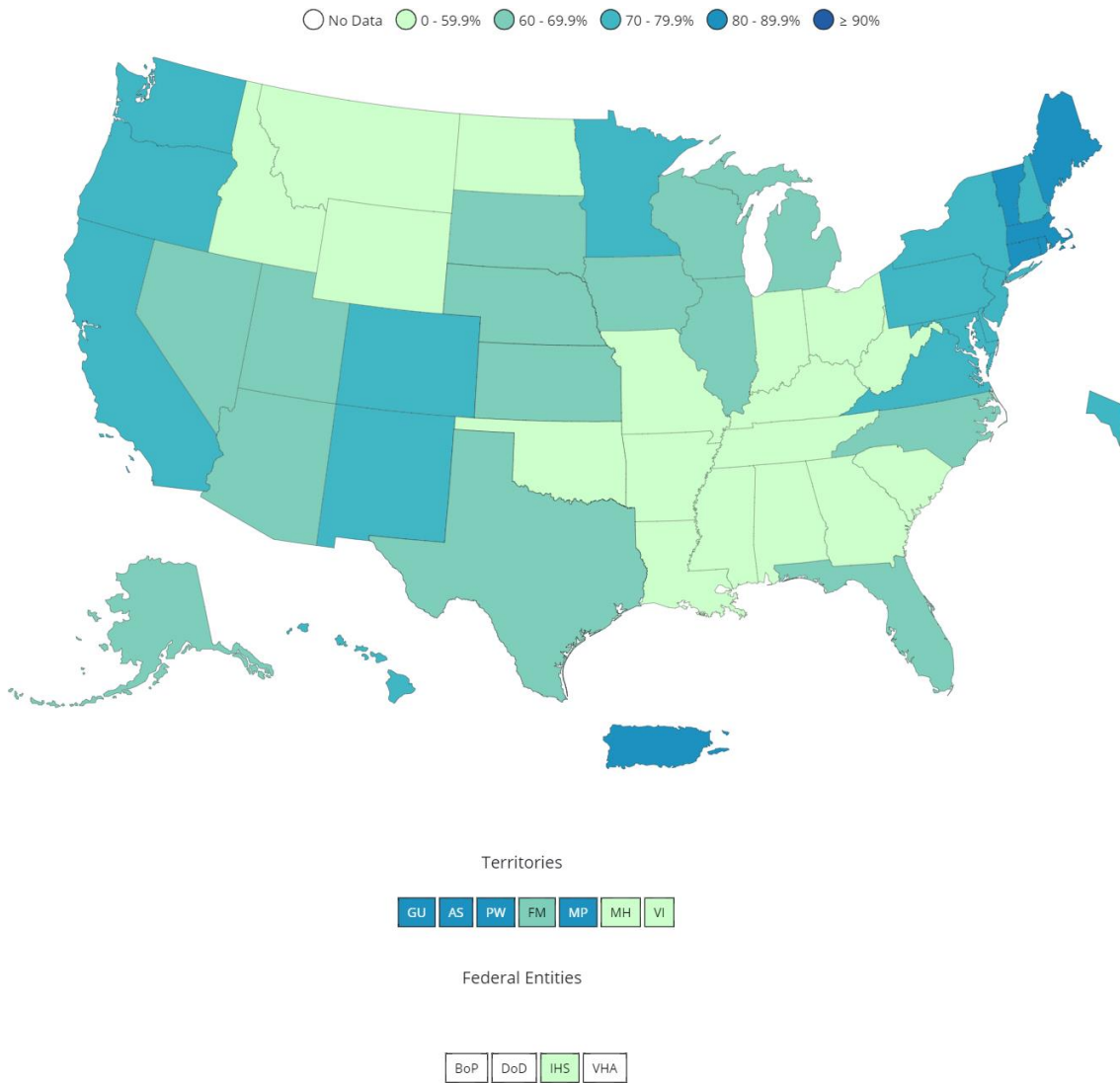
Table 6. Percentage of Total Population Fully Vaccinated and Boosted by Washoe County, Nevada, and the United States, 2021-2022

	% Population Fully Vaccinated	% Population Boosted
United States*	67.2	32.5
Nevada*	61.7	25.0
Washoe County**	63.0	30.2

* Data Source: https://covid.cdc.gov/covid-data-tracker/#vaccinations_vacc-people-fully-percent-total as of 07/27/2022.

** Data Source: WebIZ as of 07/26/2022.

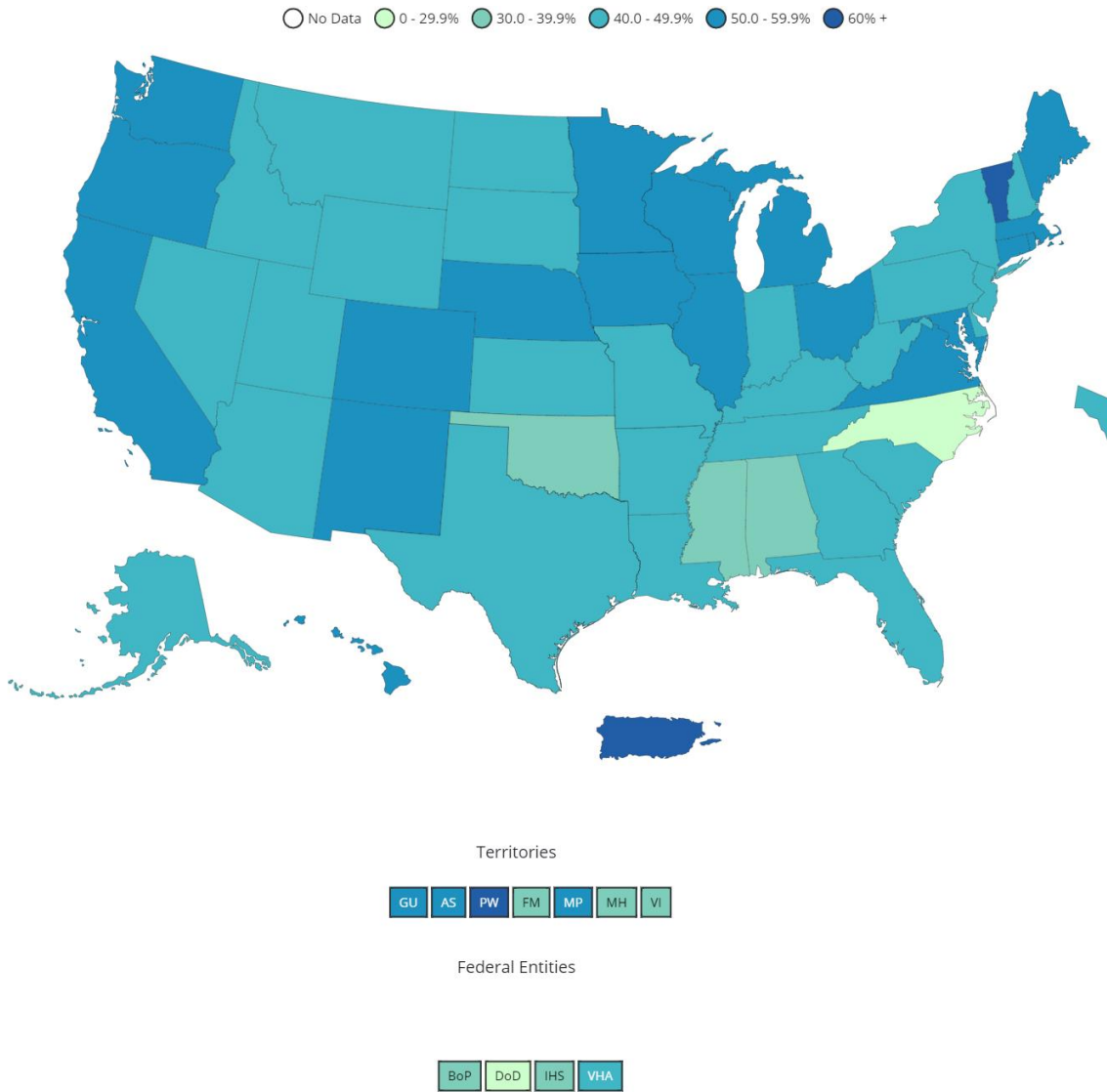
Figure 7. Percent of People Fully Vaccinated Reported to the CDC by State/Territory and for Select Federal Entities for the Total Population



Data for Federal Entities are presented here and are also incorporated into the respective jurisdictional totals

Data source for U.S. map for fully vaccinated people reported to the CDC, data as of 07/27/2022 6:00 AM ET. Posted: July 28, 2022, CDC COVID Data Tracker https://covid.cdc.gov/covid-data-tracker/#vaccinations_vacc-people-fully-percent-total

Figure 8. Percent of Fully Vaccinated People with a First Booster Dose Reported to the CDC by State/Territory or Select Federal Entities for the Total Population



Data for Federal Entities are presented here and are also incorporated into the respective jurisdictional totals

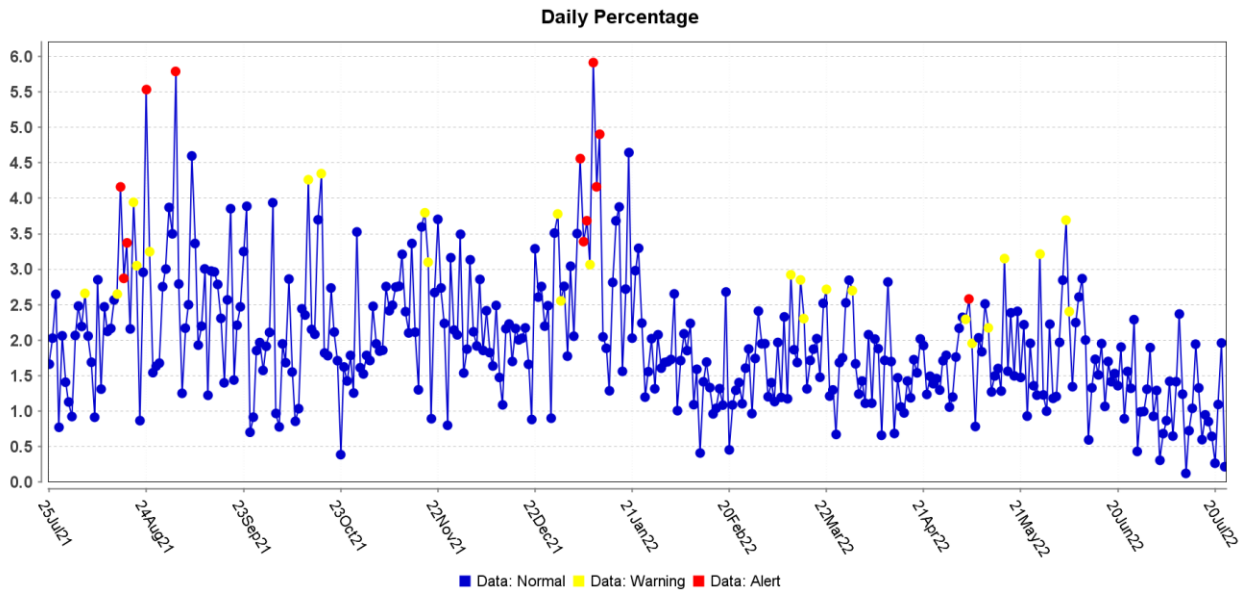
Data source for U.S. map for fully vaccinated people with a booster dose reported to the CDC, data as of 07/27/2022 6:00 AM ET. Posted: July 28, 2022, CDC COVID Data Tracker https://covid.cdc.gov/covid-data-tracker/#vaccinations_vacc-people-additional-dose-totalpop

Note: Percent of fully vaccinated people with a booster dose is a different metric than percentage of total population who received a booster dose provided in Table 6.

Surveillance Data

Percentage of persons indicating COVID-19 as the reason for visit to the Emergency Room (ER) is presented in Figure 9. The overlay below depicts COVID-19 in blue. Alerts appear as yellow and/or red dots. They indicate an unusually high percentage of COVID-19 visits according to ESSENCE algorithms.

Figure 9. Percentage of ER Visits Due to COVID in the Last Year, Washoe County



Data source: ESSENCE

Glossary/Key Terms

COVID-19 Case

Coronavirus Disease 2019 (COVID-19) cases counted in this document are confirmed or probable cases as determined by meeting confirmatory laboratory evidence, clinical criteria, and/or epidemiologic linkage as defined on the CDC website here:

<https://ndc.services.cdc.gov/case-definitions/coronavirus-disease-2019-2021/>

COVID-19 Hospitalization

COVID-19 hospitalizations are counted as those hospitalized for greater than or equal to 24 hours and have a positive SARS-CoV-2 laboratory test.

COVID-19 Death

As of January 1, 2022, both Confirmed and Probable COVID-19-associated deaths are included in the count.

- (https://cdn.ymaws.com/www.cste.org/resource/resmgr/pdfs/pdfs2/20211222_interim-guidance.pdf)

Criteria for confirmed case death:

- The case meets the confirmed COVID-19 surveillance case definition, AND at least ONE of the following criteria is met:

- A case investigation determined that COVID-19 was the cause of death or contributed to the death.
- The death certificate indicates COVID-19 or an equivalent term as one of the causes of death, regardless of the time elapsed since specimen collection of the confirmatory laboratory test used to define the case.
- The death occurred within (and including) 30 days of specimen collection for the confirmatory laboratory test used to define the case and was due to natural causes (e.g., the Manner of Death is coded as “natural” on the death certificate.)

Criteria for probable case death:

- The case meets the probable COVID-19 case definition AND a case investigation determined that COVID-19 was the cause of death or contributed to the death; **OR**
- The case meets the probable COVID-19 surveillance case definition based on presumptive laboratory evidence AND death occurred within (and including) 30 days of specimen collection and was due to natural causes (e.g., the Manner of Death is coded as “natural” on the death certificate.); **OR**
- The case meets the probable COVID-19 surveillance case definition based on epidemiologic linkage and meeting clinical criteria, AND death occurred within (and including) 30 days of symptom onset and was due to natural causes (e.g., the Manner of Death is coded as “natural” on the death certificate.); **OR**
- The case meets the probable COVID-19 surveillance case definition based only on vital records criteria (i.e., a death certificate that lists COVID-19 disease or SARS-CoV-2 or an equivalent term as an underlying cause of death or a significant condition contributing to death and there is no confirmatory or presumptive laboratory evidence.)

Links

WCHD COVID Dashboard

<https://washoe.maps.arcgis.com/apps/dashboards/0db36fa8fa9c47758bc38210e4c23818>

WCHD website for COVID information and vaccine appointments

<https://covid19washoe.com/>

CDC COVID Data Tracker <https://covid.cdc.gov/covid-data-tracker/>

Nevada State Public Health Laboratory created a new COVID-19 variant web page

<https://www.nvsarscov2variant.com/variants>

Department of Health and Human Services Nevada Division of Public and Behavioral Health (DPBH) Technical Bulletins

https://dphh.nv.gov/Resources/Technical_Bulletins-New/

WCHD COVID reports <https://covid19washoe.com/daily-updates/washoe-county-covid-19-data-report/>