

**COVID-19 Epidemiology Surveillance Program**  
**MMWR Week #30 – 31, July 24 – Aug. 6, 2022**

Division of Epidemiology & Public Health Preparedness (EHP) 775-328-2447

Adam Vazquez, MPH, COVID-19 Epidemiologist [AVazquez@washoecounty.gov](mailto:AVazquez@washoecounty.gov)

Lissa Callahan, COVID-19 Statistician [LCallahan@washoecounty.gov](mailto:LCallahan@washoecounty.gov)

**Weekly Summary\***

Metrics	MMWR Week 30	MMWR Week 31
Number of New Cases	760	651
New Cases per 100,000 Population	156	133
Number of New Breakthrough Cases	412	318
Hospitalizations**	38	23
Deaths**	0	6

- Completed Vaccination Total through 8/8/2022: 304,672 persons

\*For definition and specifics on metrics summarized, please refer to corresponding sections.

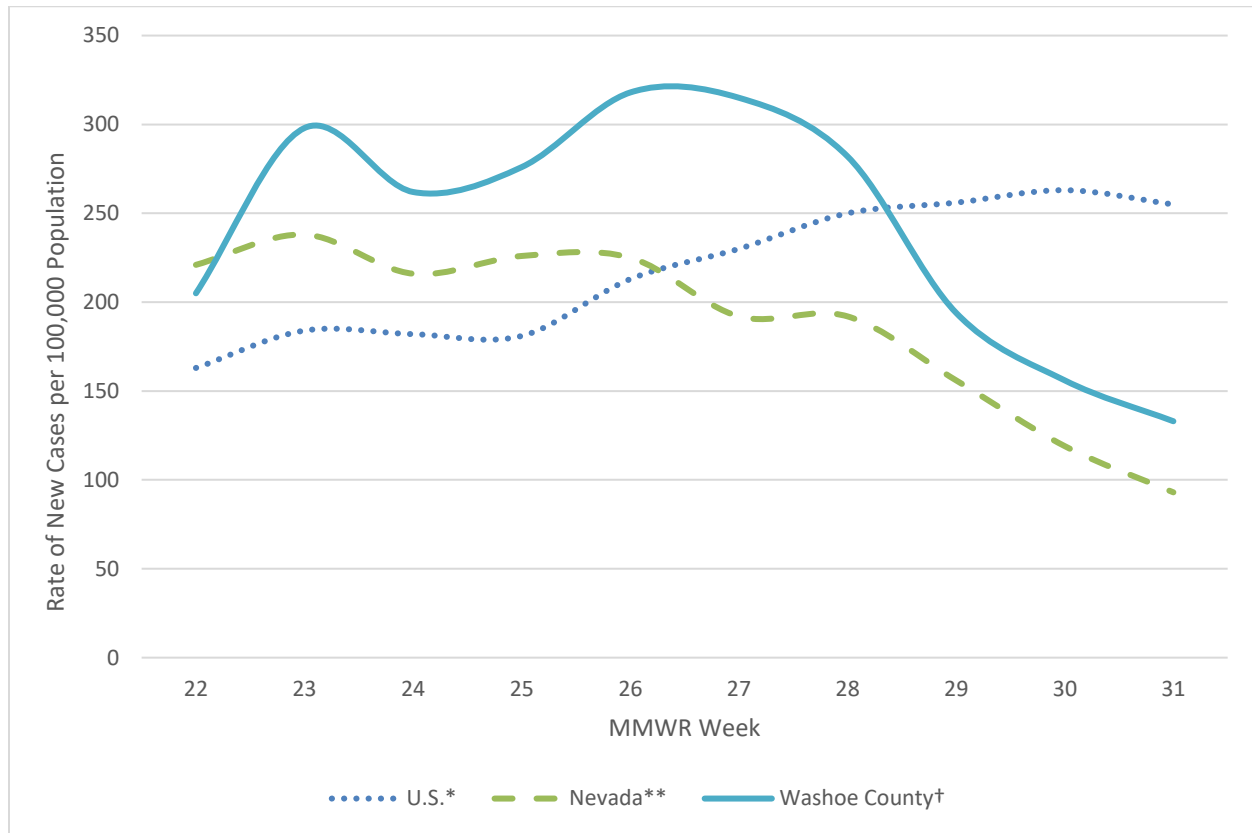
\*\*Note: hospitalization and death totals for each week are subject to change as new reports are received on a daily basis and are often delayed, causing underreporting in more recent MMWR weeks.

Key message(s)

- The number of cases reported in Washoe County have decreased from MMWR week 26 through MMWR week 31.
- Only 30.0% of Washoe County’s population has received a booster dose.
- From this report forward, the Washoe County population used for calculations has been updated to the 2022 total population of 488,114 persons.
- ESSENCE data was non-accessible this week, therefore Figure 9 is not updated for this report cycle.

## COVID-19 Case Information

**Figure 1. Rate of New Cases Reported by MMWR Week, Washoe County, Nevada, and the United States, 2022**



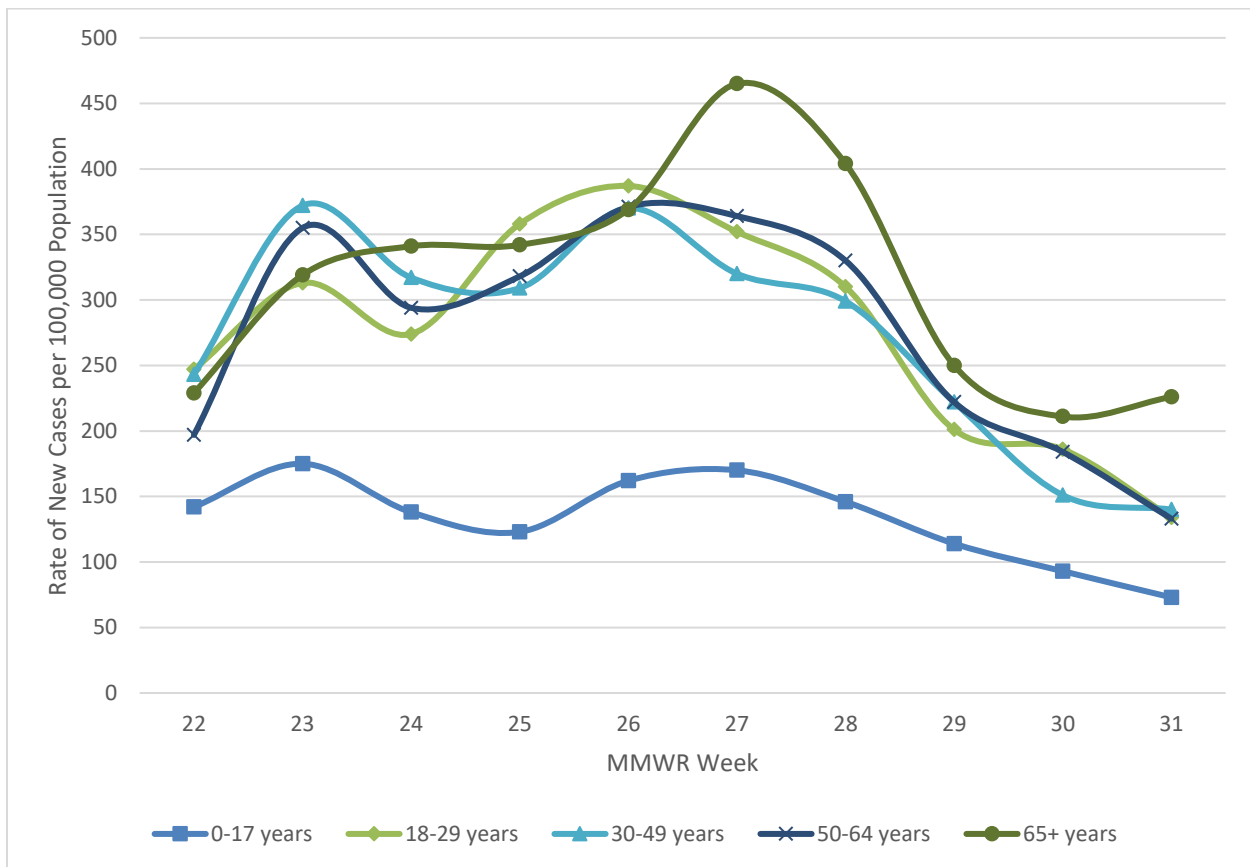
\*Data source: <https://data.cdc.gov/Public-Health-Surveillance/United-States-COVID-19-County-Level-of-Community-T/8396-v7yb>, data by date reported

\*\*Data Source: <https://nvhealthresponse.nv.gov/#covid-data-tracker>, data by sample collection date

†Data source: Internal, WCHD, data by date reported

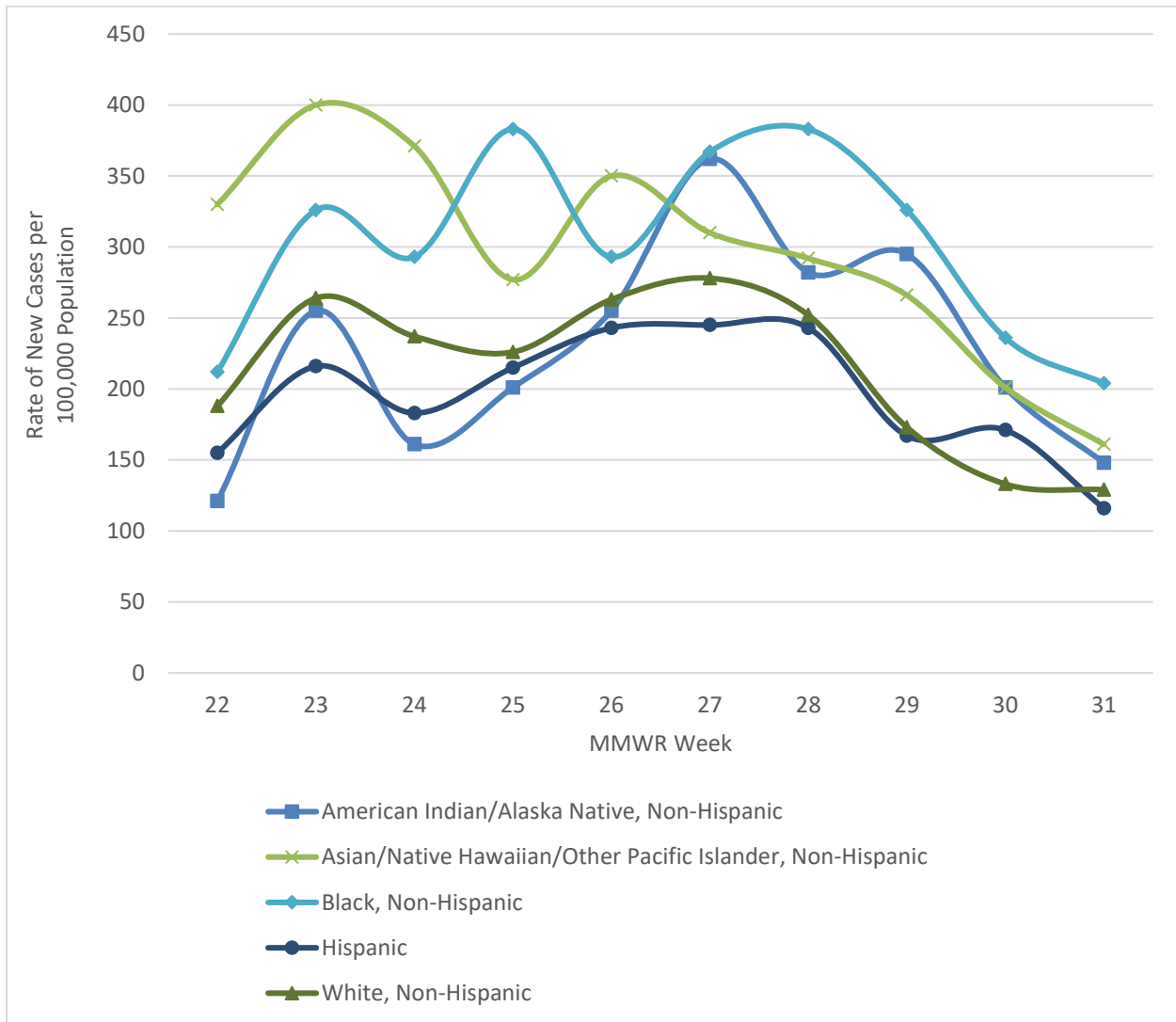
- In Washoe County, case counts decreased from a ten-week high of 318 new cases per 100,000 population in MMWR week 26 to 133 new cases per 100,000 population in MMWR week 31.
- In Nevada, case counts decreased from 238 new cases per 100,000 population in MMWR week 23 to 93 new cases per 100,000 population in MMWR week 31.
- In the United States, case counts increased overall. During MMWR week 30 and MMWR week 31 there were 263 and 255 new cases per 100,000 population, respectively, which is an increase from the ten-week low of 163 new cases per 100,000 population in MMWR week 22.

**Figure 2. Rate of New Cases Reported by Age Group and MMWR Week, Washoe County, 2022**



- The age group with the highest case rate during MMWR week 31 was the 65+ age group with 226 new cases per 100,000 population, which is a decrease from a ten-week high in MMWR week 27 of 465 new cases per 100,000 population.
- The age group with the lowest case rate during MMWR week 31 was the 0-17 age group with 73 new cases per 100,000 population.

**Figure 3. Rate of New Cases Reported by Race/Ethnicity\* and MMWR Week, Washoe County, 2022**



\*Note: From MMWR week 22 to MMWR week 31, 13.0% of cases were recorded as “Declined to answer”, “Multiple”, “Other”, or “Unknown” and rates per 100,000 population are unable to be calculated for those categories.

- In MMWR week 31, those who identified as Black, Non-Hispanic had the highest rate of new cases at 204 new cases per 100,000 population, which was a decrease from a high of 383 new cases per 100,000 population in MMWR week 28.
- From MMWR weeks 26 through 31, those who identified as Asian/Native Hawaiian/Other Pacific Islander, Non-Hispanic decreased from 350 to 161 cases per 100,000 population.
- In MMWR week 31, those who identified as Hispanic had the lowest rate of new cases per 100,000 population at 116 new cases per 100,000 population.

## Hospitalizations, ICU Status, & Deaths

COVID-19 hospitalizations are defined as those hospitalized for greater than or equal to 24 hours and have a positive SARS-CoV-2 laboratory test.

COVID-19 deaths are defined as decedents who have had a positive PCR COVID-19 lab report  $\leq$  30 days from death or post-mortem. This includes deaths attributed to COVID-19 related illnesses and, if not specifically listed on death certificate, a positive PCR COVID-19 lab, dependent on the manner of death. See full definition in Glossary/Key Terms at the end of the report.

**Table 1. Number and Percent of New Cases Reported by Age and Hospitalization Status, MMWR Weeks\* 30 and 31, Washoe County, 2022**

			Age Group				
			0-17	18-29	30-49	50-64	65+
MMWR Week	30	Total Cases	100	150	185	160	165
		% Hospitalized	4.0%	1.3%	1.1%	3.8%	14.5%
	31	Total Cases	79	108	171	116	177
		% Hospitalized	7.6%	0.9%	0.0%	6.0%	5.1%

\* Note: hospitalization totals for each week are subject to change as new reports are received on a daily basis and are often delayed, causing underreporting in more recent MMWR weeks.

- During MMWR week 30, the age group with the highest percentage of total cases resulting in hospitalization were those 65+.
- During MMWR week 31, the age group with the highest percentage of total cases resulting in hospitalization were those 0-17, followed closely by the 50-64 and 65+ age groups.

**Table 2. Number and Percentage of Cases Reported by Hospitalization and ICU Status by MMWR Week\*, Washoe County, 2022**

MMWR Week	New Cases	Hospitalized		ICU	
		#	%	#	%
22	999	19	1.9	1	0.1
23	1,456	35	2.4	6	0.4
24	1,280	42	3.3	5	0.4
25	1,345	32	2.4	3	0.2
26	1,551	42	2.7	8	0.5
27	1,539	54	3.5	5	0.3
28	1,376	43	3.1	2	0.1
29	946	31	3.3	2	0.2
30	760	38	5.0	3	0.4
31	651	23	3.5	1	0.2

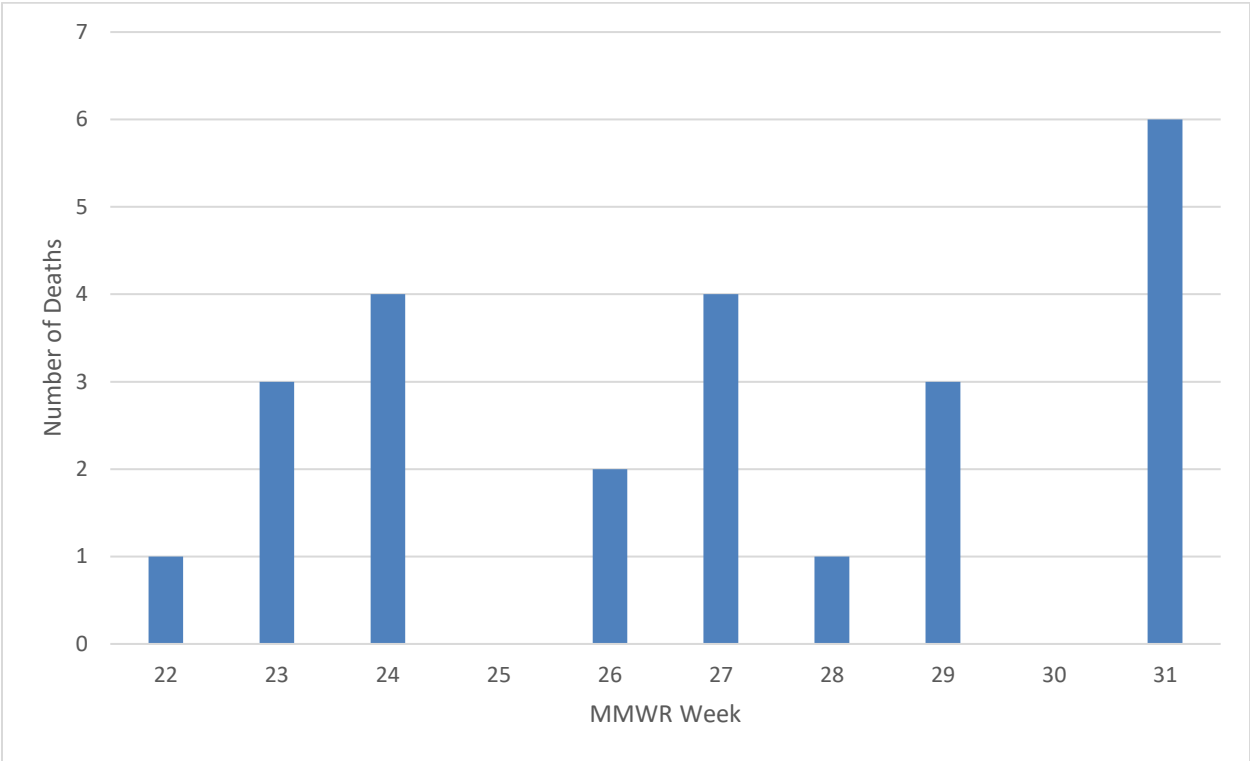
\*Note: hospitalization and ICU totals for each week are subject to change as new reports are received on a daily basis and are often delayed, causing underreporting in more recent MMWR weeks.

**Table 3. COVID-19 Deaths by Age Group and Time Period\* of Death, Washoe County, 2020-2022**

Time Period	Total Deaths	0-17 years	18-29 years	30-49 years	50-64 years	65+ years
2020 March - December	510	1	2	31	85	391
2021 Total	554	1	6	60	125	362
2022 January	86	0	1	6	14	65
2022 February	62	0	1	5	16	40
2022 March	25	0	0	0	2	23
2022 April	7	0	0	0	0	7
2022 May	6	0	0	2	0	4
2022 June	9	0	0	0	2	7
2022 July	8	0	0	0	0	8

\*Note: death totals are subject to change as new reports are received on a daily basis and are often delayed, causing underreporting in more recent months.

**Figure 4. Number of Deaths Occurring by MMWR Week\*, Washoe County, 2022**



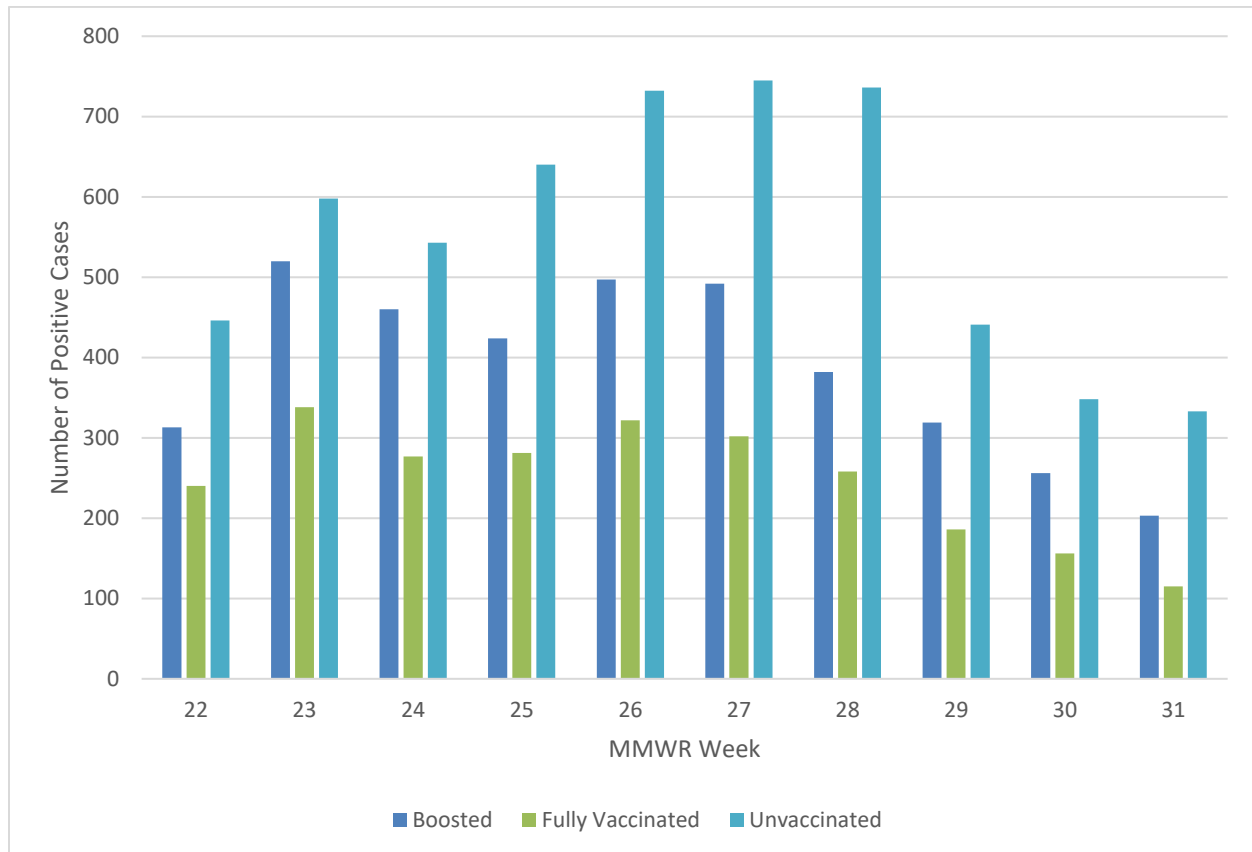
\*Note: death totals for each week are subject to change as new reports are received on a daily basis and are often delayed, causing underreporting in more recent MMWR weeks.

- At the time of publication, there have not been any deaths reported to have occurred during MMWR weeks 25 and 30.

## Breakthrough Cases

A breakthrough COVID-19 case is defined as a Washoe County resident who has SARS-CoV-2 PCR or antigen detected through laboratory testing 14 or more days after completing the primary series of an FDA-authorized COVID-19 vaccine.

**Figure 5. Number of Cases by Vaccination Status and MMWR Week\*, Washoe County, 2022**



\*Note: vaccination data for each week are subject to change as vaccinations are updated on a daily basis and are often on a delay internally, causing underreporting in more recent MMWR weeks.

- In recent weeks, cases that were unvaccinated composed higher percentages of total cases than those who were boosted or those who were fully vaccinated.
- During MMWR week 30, 45.8% (n = 348) of new cases were unvaccinated, while 33.7% (n = 256) and 20.5% (n = 156) of new cases were boosted and fully vaccinated, respectively.
- During MMWR week 31, the unvaccinated group represented 51.2% (n = 333) of newly reported cases, while individuals who were boosted represented 31.2% (n = 203) and fully vaccinated individuals represented 17.7% (n = 115) of newly reported cases.



**Table 4. Number and Percentage of Cases Reporting Hospitalization and ICU by Vaccination Status and MMWR Week\*, Washoe County, 2022**

All Cases				Unvaccinated Cases				Breakthrough Cases			
MMWR Week	New Cases	Total Hospitalized	Total ICU	Hospitalized		ICU		Hospitalized		ICU	
				#	% <sup>a</sup>	#	% <sup>b</sup>	#	% <sup>a</sup>	#	% <sup>b</sup>
22	999	19	1	8	42.1	1	100.0	11	57.9	0	0.0
23	1,456	35	6	18	51.4	4	66.7	17	48.6	2	33.3
24	1,280	42	5	19	45.2	3	60.0	23	54.8	2	40.0
25	1,345	32	3	20	62.5	3	100.0	12	37.5	0	0.0
26	1,551	42	8	14	33.3	3	37.5	28	66.7	5	62.5
27	1,539	54	5	27	50.0	1	20.0	27	50.0	4	80.0
28	1,376	43	2	23	53.5	2	100.0	20	46.5	0	0.0
29	946	31	2	12	38.7	1	50.0	19	61.3	1	50.0
30	760	38	3	15	39.5	1	33.3	23	60.5	2	66.7
31	651	23	1	13	56.5	1	100.0	10	43.5	0	0.0

\*Note: hospitalization and ICU totals for each week are subject to change as new reports are received on a daily basis and are often delayed, causing underreporting in more recent MMWR weeks.

<sup>a</sup> Calculated as the percentage of Total Hospitalizations by vaccination status for the MMWR week.

<sup>b</sup> Calculated as the percentage of Total ICU by vaccination status for the MMWR week.

## Vaccinations

Current dose and vaccination totals and percentages for Washoe County residents; data as of 8/9/2022.

**164,769** doses reported as administered per 100,000 population (to date)

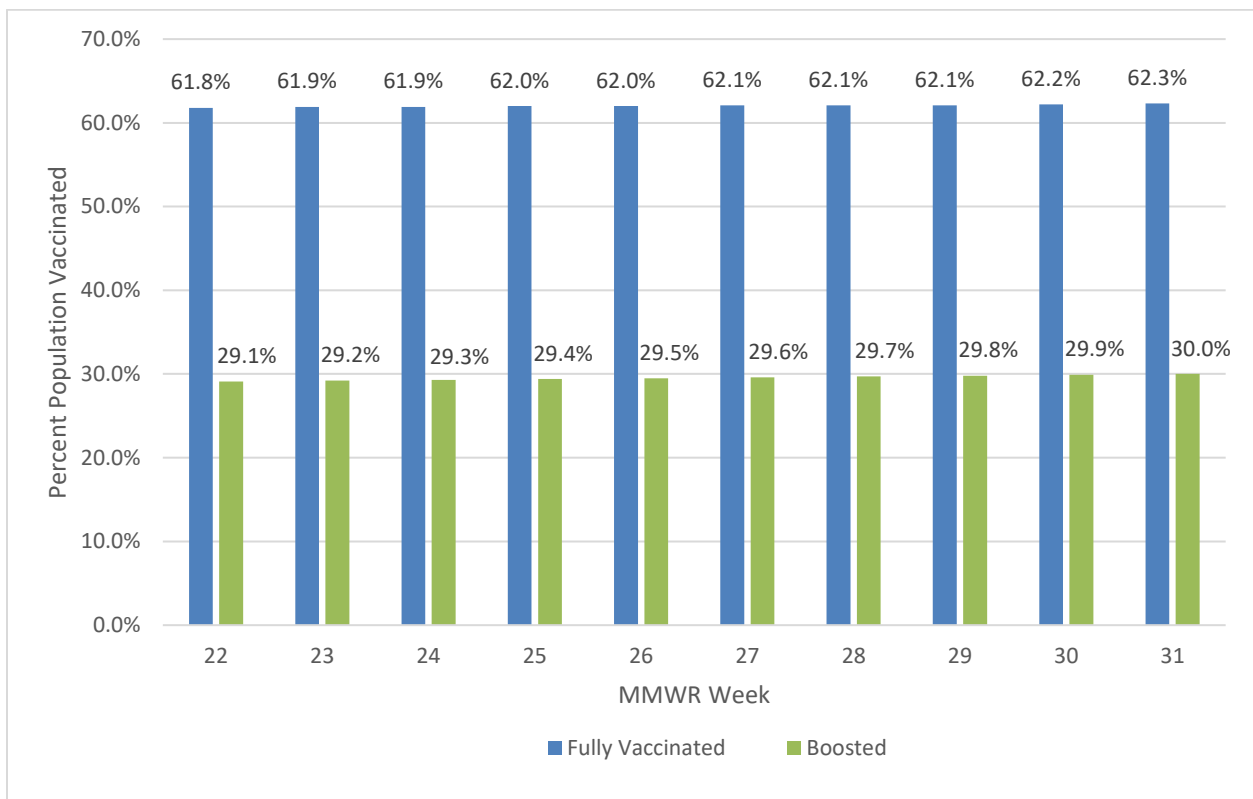
**70,373** (70.4% of population) vaccinations reported as initiated per 100,000 population

**62,266** (62.3% of population) vaccinations reported as completed per 100,000 population

**76.7%** of population 5 years and older initiated vaccination

**68.3%** of population 5 years and older completed vaccination

**Figure 6. Percentage of Population Fully Vaccinated and Boosted, Washoe County, 2022**



**Table 5. Percentage of Population Vaccinated by Sex, Age Group, and Race/Ethnicity\*, Washoe County, 2021-2022**

Select Demographics		% Population Fully Vaccinated
Sex	Female	67.1%
	Male	60.9%
Age Group	0-17 years	30.1%
	18-29 years	64.3%
	30-49 years	68.0%
	50-64 years	80.0%
	65+ years	86.6%
Race / Ethnicity*	American Indian/Alaska Native, Non-Hispanic**	33.9%
	Asian/Native Hawaiian/Other Pacific Islander, Non-Hispanic	46.2%
	Black, Non-Hispanic	38.0%
	Hispanic	50.1%
	White, Non-Hispanic	50.6%

\*Note: 22.5% of the total vaccinated population were recorded as “Unknown” or “Other” and therefore population percentages are unable to be calculated for those categories. Additionally, 2.5% of the total Washoe County population had missing demographic information and therefore were not included in the overall calculations.

\*\*Note: Tribal populations may be underrepresented as the data source does not include Indian Health Services (IHS) data, which may contain vaccination records for tribal members and those who access services through IHS clinics.

- In Washoe County, the age group with the highest vaccination rates are those 65+ years (86.6%), followed by the 50-64 age group (80.0%).
- In Washoe County, those who identify as White, Non-Hispanic have the highest percent vaccinated (50.6%), followed by Hispanic (50.1%) and Asian/Native Hawaiian/Other Pacific Islander, Non-Hispanic (46.2%).

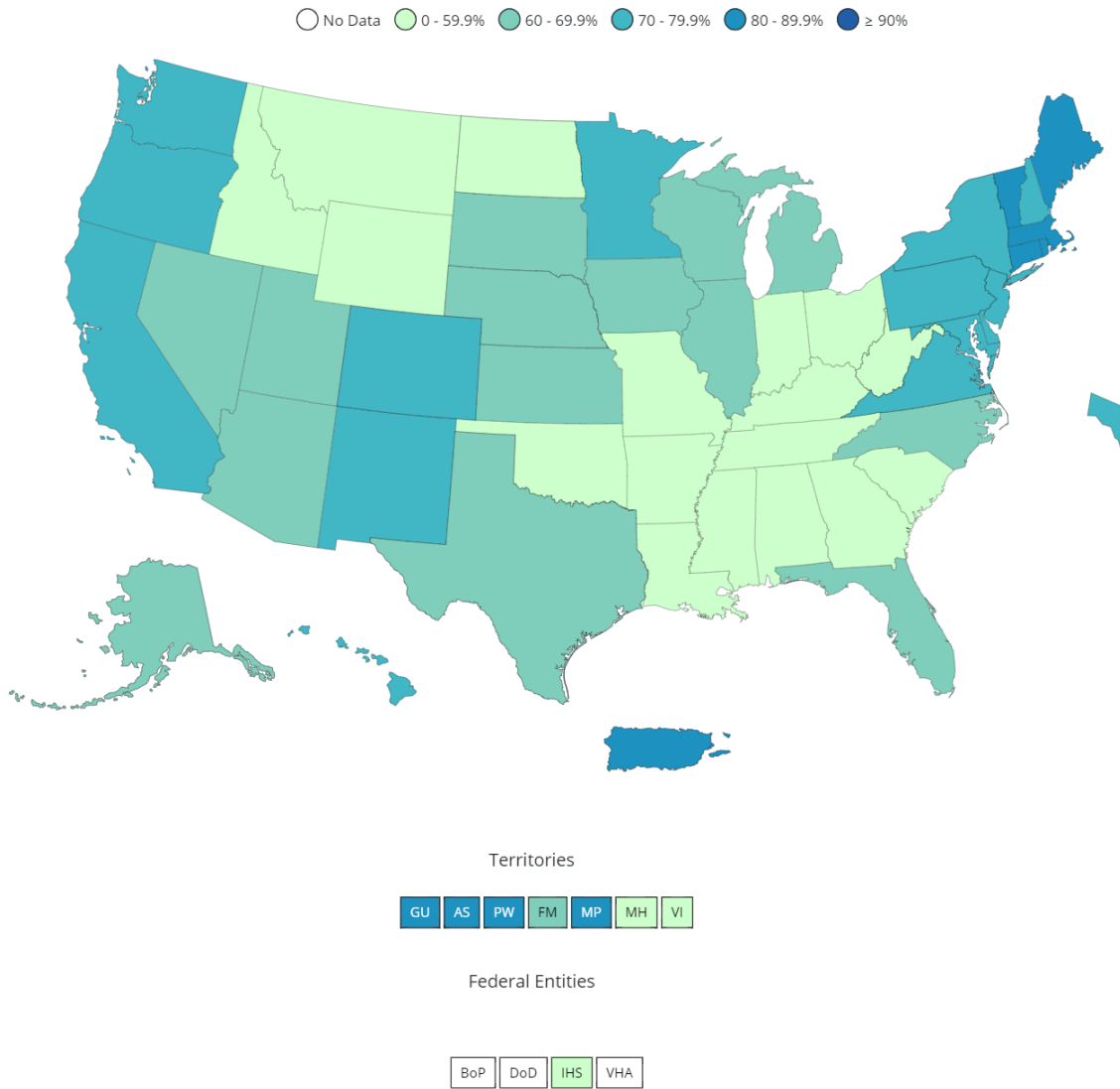
**Table 6. Percentage of Total Population Fully Vaccinated and Boosted by Washoe County, Nevada, and the United States, 2021-2022**

	% Population Fully Vaccinated	% Population Boosted
United States*	67.2	32.4
Nevada*	61.7	25.1
Washoe County**	62.3	30.0

\* Data Source: [https://covid.cdc.gov/covid-data-tracker/#vaccinations\\_vacc-people-fully-percent-total](https://covid.cdc.gov/covid-data-tracker/#vaccinations_vacc-people-fully-percent-total) as of 08/10/2022.

\*\* Data Source: WebIZ as of 08/09/2022.

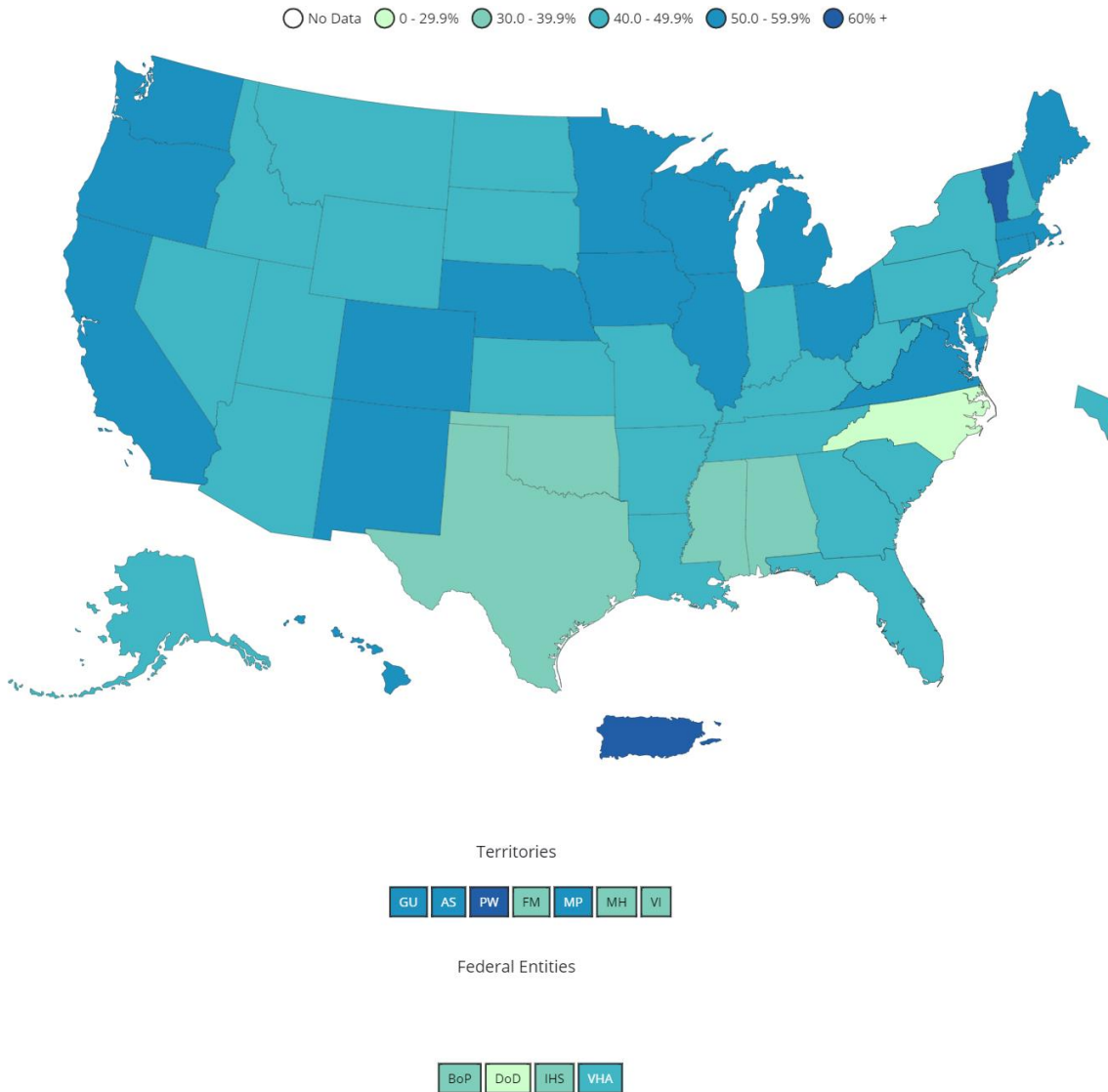
**Figure 7. Percent of People Fully Vaccinated Reported to the CDC by State/Territory and for Select Federal Entities for the Total Population**



Data for Federal Entities are presented here and are also incorporated into the respective jurisdictional totals

Data source for U.S. map for fully vaccinated people reported to the CDC, data as of 08/10/2022 6:00 AM ET. Posted: August 11, 2022, CDC COVID Data Tracker [https://covid.cdc.gov/covid-data-tracker/#vaccinations\\_vacc-people-fully-percent-total](https://covid.cdc.gov/covid-data-tracker/#vaccinations_vacc-people-fully-percent-total)

**Figure 8. Percent of Fully Vaccinated People with a First Booster Dose Reported to the CDC by State/Territory or Select Federal Entities for the Total Population**



Data for Federal Entities are presented here and are also incorporated into the respective jurisdictional totals

Data source for U.S. map for fully vaccinated people with a booster dose reported to the CDC, data as of 08/10/2022 6:00 AM ET. Posted: August 11, 2022, CDC COVID Data Tracker [https://covid.cdc.gov/covid-data-tracker/#vaccinations\\_vacc-people-additional-dose-totalpop](https://covid.cdc.gov/covid-data-tracker/#vaccinations_vacc-people-additional-dose-totalpop)

Note: Percent of fully vaccinated people with a booster dose is a different metric than percentage of total population who received a booster dose provided in Table 6.

## Surveillance Data

Percentage of persons indicating COVID-19 as the reason for visit to the Emergency Room (ER) is presented in Figure 9. The overlay below depicts COVID-19 in blue. Alerts appear as yellow and/or red dots. They indicate an unusually high percentage of COVID-19 visits according to ESSENCE algorithms.

### Figure 9. Percentage of ER Visits Due to COVID in the Last Year, Washoe County

- ESSENCE data non-accessible this week, therefore this figure is not updated for this report cycle.

## Glossary/Key Terms

### COVID-19 Case

Coronavirus Disease 2019 (COVID-19) cases counted in this document are confirmed or probable cases as determined by meeting confirmatory laboratory evidence, clinical criteria, and/or epidemiologic linkage as defined on the CDC website here:

<https://ndc.services.cdc.gov/case-definitions/coronavirus-disease-2019-2021/>

### COVID-19 Hospitalization

COVID-19 hospitalizations are counted as those hospitalized for greater than or equal to 24 hours and have a positive SARS-CoV-2 laboratory test.

### COVID-19 Death

As of January 1, 2022, both Confirmed and Probable COVID-19-associated deaths are included in the count.

- ([https://cdn.ymaws.com/www.cste.org/resource/resmgr/pdfs/pdfs2/20211222\\_interim-guidance.pdf](https://cdn.ymaws.com/www.cste.org/resource/resmgr/pdfs/pdfs2/20211222_interim-guidance.pdf))

Criteria for confirmed case death:

- The case meets the confirmed COVID-19 surveillance case definition, AND at least ONE of the following criteria is met:
  - A case investigation determined that COVID-19 was the cause of death or contributed to the death.
  - The death certificate indicates COVID-19 or an equivalent term as one of the causes of death, regardless of the time elapsed since specimen collection of the confirmatory laboratory test used to define the case.
  - The death occurred within (and including) 30 days of specimen collection for the confirmatory laboratory test used to define the case and was due to natural causes (e.g., the Manner of Death is coded as “natural” on the death certificate.)

Criteria for probable case death:

- The case meets the probable COVID-19 case definition AND a case investigation determined that COVID-19 was the cause of death or contributed to the death; **OR**

- The case meets the probable COVID-19 surveillance case definition based on presumptive laboratory evidence AND death occurred within (and including) 30 days of specimen collection and was due to natural causes (e.g., the Manner of Death is coded as “natural” on the death certificate.); **OR**
- The case meets the probable COVID-19 surveillance case definition based on epidemiologic linkage and meeting clinical criteria, AND death occurred within (and including) 30 days of symptom onset and was due to natural causes (e.g., the Manner of Death is coded as “natural” on the death certificate.); **OR**
- The case meets the probable COVID-19 surveillance case definition based only on vital records criteria (i.e., a death certificate that lists COVID-19 disease or SARS-CoV-2 or an equivalent term as an underlying cause of death or a significant condition contributing to death and there is no confirmatory or presumptive laboratory evidence.)

## Links

### **WCHD COVID Dashboard**

<https://washoe.maps.arcgis.com/apps/dashboards/0db36fa8fa9c47758bc38210e4c23818>

### **WCHD website for COVID information and vaccine appointments**

<https://covid19washoe.com/>

**CDC COVID Data Tracker** <https://covid.cdc.gov/covid-data-tracker/>

### **Nevada State Public Health Laboratory created a new COVID-19 variant web page**

<https://www.nvsarscov2variant.com/variants>

### **Department of Health and Human Services Nevada Division of Public and Behavioral Health (DPBH) Technical Bulletins**

[https://dpbh.nv.gov/Resources/Technical\\_Bulletins-New/](https://dpbh.nv.gov/Resources/Technical_Bulletins-New/)

**WCHD COVID reports** <https://covid19washoe.com/daily-updates/washoe-county-covid-19-data-report/>