

**COVID-19 Epidemiology Surveillance Program**  
**MMWR Week #32 – 33, Aug. 7 – Aug. 20, 2022**

Division of Epidemiology & Public Health Preparedness (EHP) 775-328-2447

Adam Vazquez, MPH, COVID-19 Epidemiologist [AVazquez@washoecounty.gov](mailto:AVazquez@washoecounty.gov)

Lissa Callahan, COVID-19 Statistician [LCallahan@washoecounty.gov](mailto:LCallahan@washoecounty.gov)

**Weekly Summary\***

Metrics	MMWR Week 32	MMWR Week 33
Number of New Cases	493	432
New Cases per 100,000 Population	101	89
Number of New Breakthrough Cases	297	178
Hospitalizations**	16	8
Deaths**	3	1

- Completed Vaccination Total through 8/23/2022: 304,850 persons

\*For definition and specifics on metrics summarized, please refer to corresponding sections.

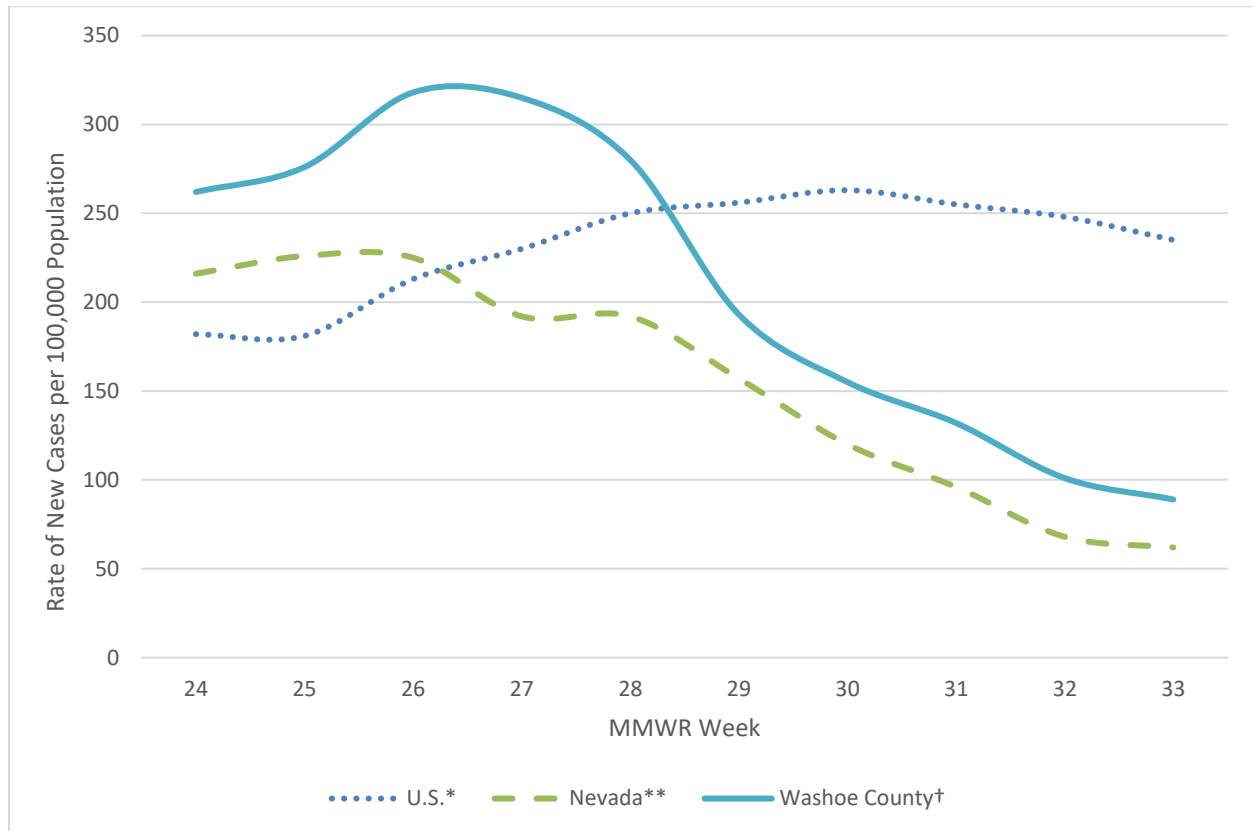
\*\*Note: hospitalization and death totals for each week are subject to change as new reports are received on a daily basis and are often delayed, causing underreporting in more recent MMWR weeks.

Key message(s)

- The number of cases reported in Washoe County have decreased each week from MMWR week 26 through MMWR week 33.
- Only 30.2% of Washoe County’s population has received a booster dose.

## COVID-19 Case Information

**Figure 1. Rate of New Cases Reported by MMWR Week, Washoe County, Nevada, and the United States, 2022**



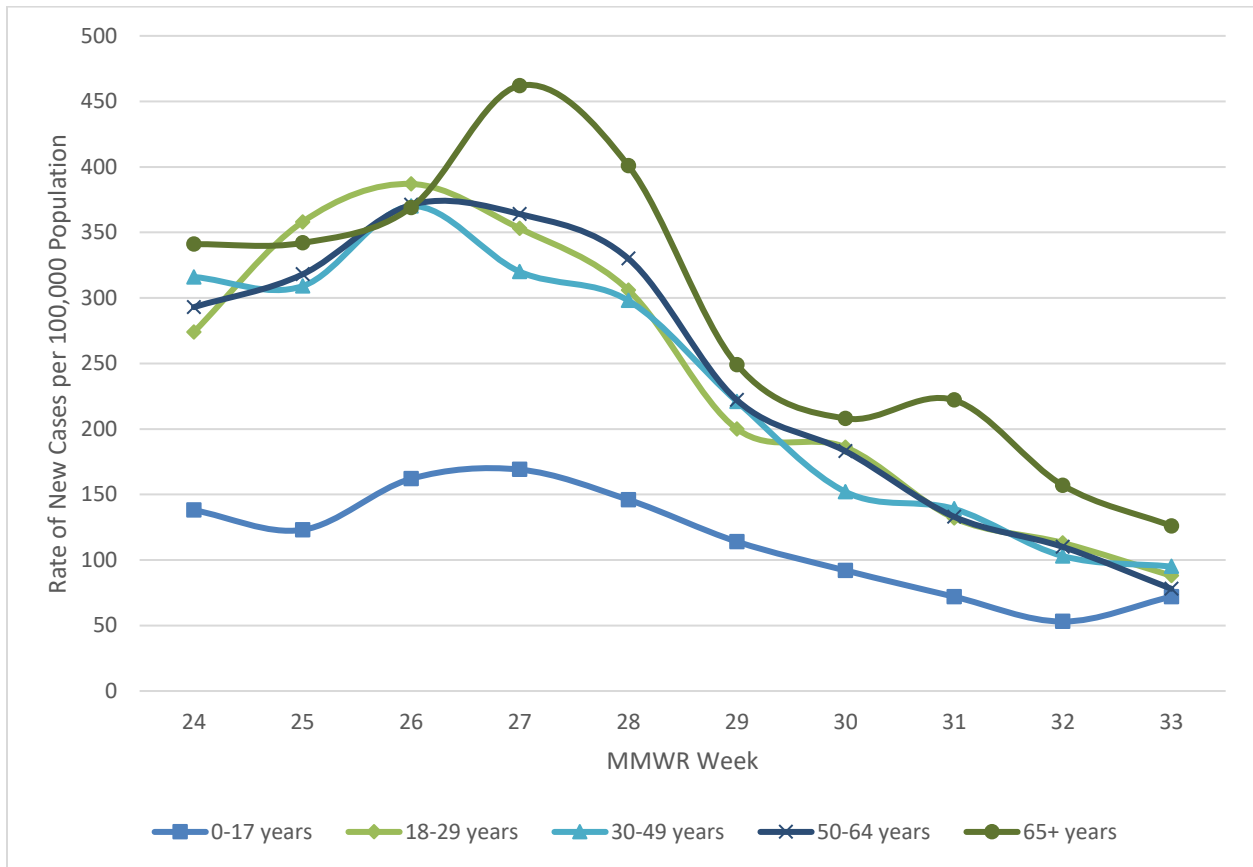
\*Data source: <https://data.cdc.gov/Public-Health-Surveillance/United-States-COVID-19-County-Level-of-Community-T/8396-v7yb>, data by date reported

\*\*Data Source: <https://nvhealthresponse.nv.gov/#covid-data-tracker>, data by sample collection date

†Data source: Internal, WCHD, data by date reported

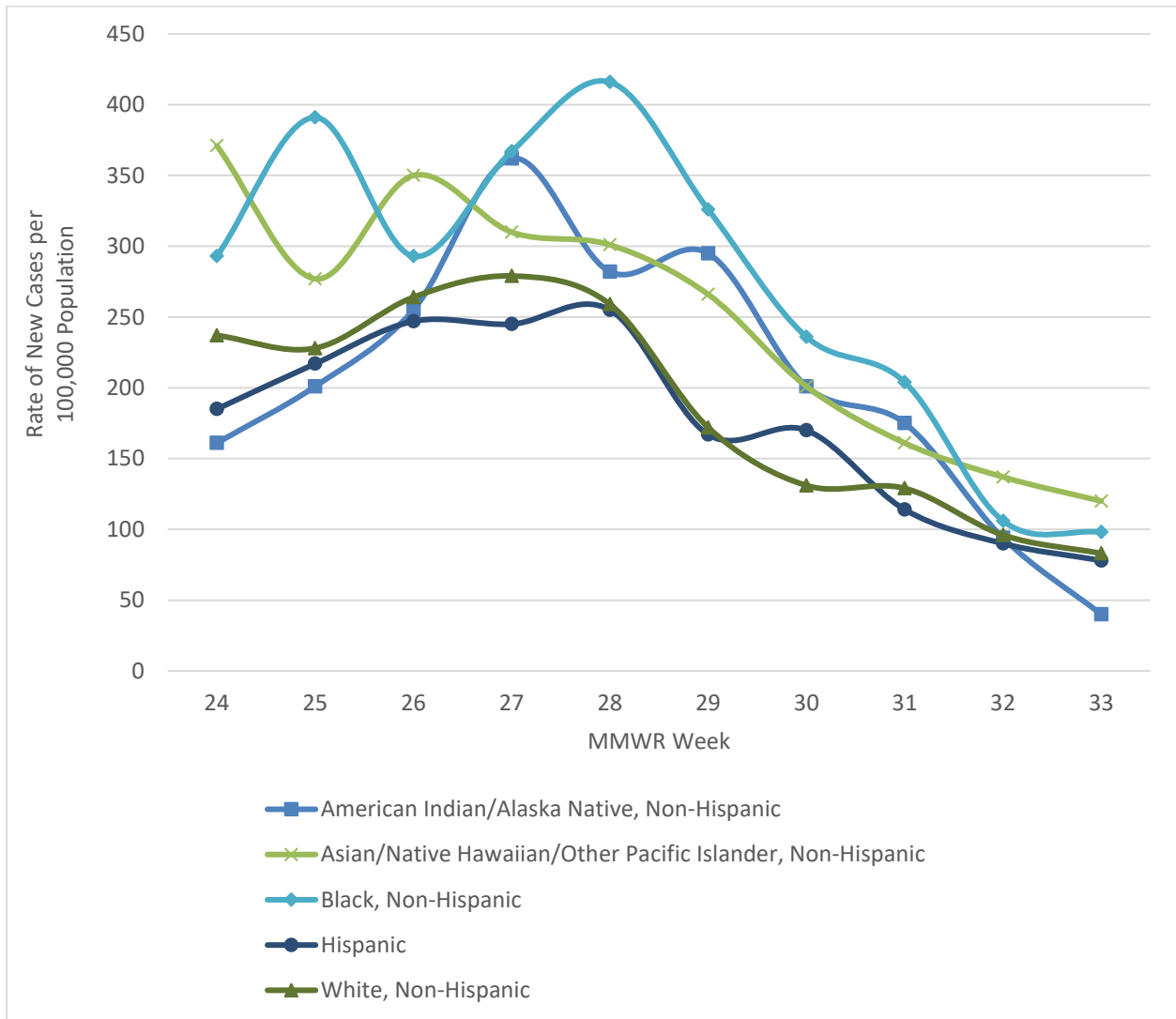
- In Washoe County, case counts decreased from a ten-week high of 318 new cases per 100,000 population in MMWR week 26 to 89 new cases per 100,000 population in MMWR week 33.
- In Nevada, case counts decreased from 226 new cases per 100,000 population in MMWR week 25 to 62 new cases per 100,000 population in MMWR week 33.
- In the United States, case counts decreased from a ten-week high of 263 new cases per 100,000 population in MMWR week 30 to 235 new cases per 100,000 population in MMWR week 33.

**Figure 2. Rate of New Cases Reported by Age Group and MMWR Week, Washoe County, 2022**



- The age group with the highest case rate during MMWR week 33 was the 65+ age group with 126 new cases per 100,000 population, which is a decrease from a ten-week high in MMWR week 27 of 462 new cases per 100,000 population.
- The age group with the lowest case rate during MMWR week 33 was the 0-17 age group with 72 new cases per 100,000 population.

**Figure 3. Rate of New Cases Reported by Race/Ethnicity\* and MMWR Week, Washoe County, 2022**



\*Note: From MMWR week 24 to MMWR week 33, 11.8% of cases were recorded as “Declined to answer”, “Multiple”, “Other”, or “Unknown” and rates per 100,000 population are unable to be calculated for those categories.

- In MMWR week 33, those who identified as Asian/Native Hawaiian/Other Pacific Islander, Non-Hispanic had the highest rate of new cases at 120 new cases per 100,000 population.
- From MMWR weeks 28 through 33, those who identified as Black, Non-Hispanic decreased from 416 to 98 cases per 100,000 population.
- In MMWR week 33, those who identified as American Indian/Alaska Native, Non-Hispanic had the lowest rate of new cases per 100,000 population at 40 new cases per 100,000 population.

## Hospitalizations, ICU Status, & Deaths

COVID-19 hospitalizations are defined as those hospitalized for greater than or equal to 24 hours and have a positive SARS-CoV-2 laboratory test.

COVID-19 deaths are defined as decedents who have had a positive PCR COVID-19 lab report  $\leq$  30 days from death or post-mortem. This includes deaths attributed to COVID-19 related illnesses and, if not specifically listed on death certificate, a positive PCR COVID-19 lab, dependent on the manner of death. See full definition in Glossary/Key Terms at the end of the report.

**Table 1. Number and Percent of New Cases Reported by Age and Hospitalization Status, MMWR Weeks\* 32 and 33, Washoe County, 2022**

			Age Group				
			0-17	18-29	30-49	50-64	65+
MMWR Week	32	Total Cases	57	91	126	96	123
		% Hospitalized	1.8%	2.2%	0.8%	2.1%	8.1%
	33	Total Cases	78	71	116	68	99
		% Hospitalized	1.3%	0.0%	0.0%	2.9%	5.1%

\* Note: hospitalization totals for each week are subject to change as new reports are received on a daily basis and are often delayed, causing underreporting in more recent MMWR weeks.

- During MMWR week 32, the age group with the highest percentage of total cases resulting in hospitalization were those 65+.
- During MMWR week 33, the age group with the highest percentage of total cases resulting in hospitalization were those 65+, followed by the 50-64 age group.

**Table 2. Number and Percentage of Cases Reported by Hospitalization and ICU Status by MMWR Week\*, Washoe County, 2022**

MMWR Week	New Cases	Hospitalized		ICU	
		#	%	#	%
24	1,278	42	3.3	5	0.4
25	1,345	32	2.4	3	0.2
26	1,551	42	2.7	8	0.5
27	1,537	53	3.4	5	0.3
28	1,369	44	3.2	2	0.1
29	942	33	3.5	3	0.3
30	757	41	5.4	3	0.4
31	644	29	4.5	1	0.2
32	493	16	3.2	4	0.8
33	432	8	1.9	1	0.2

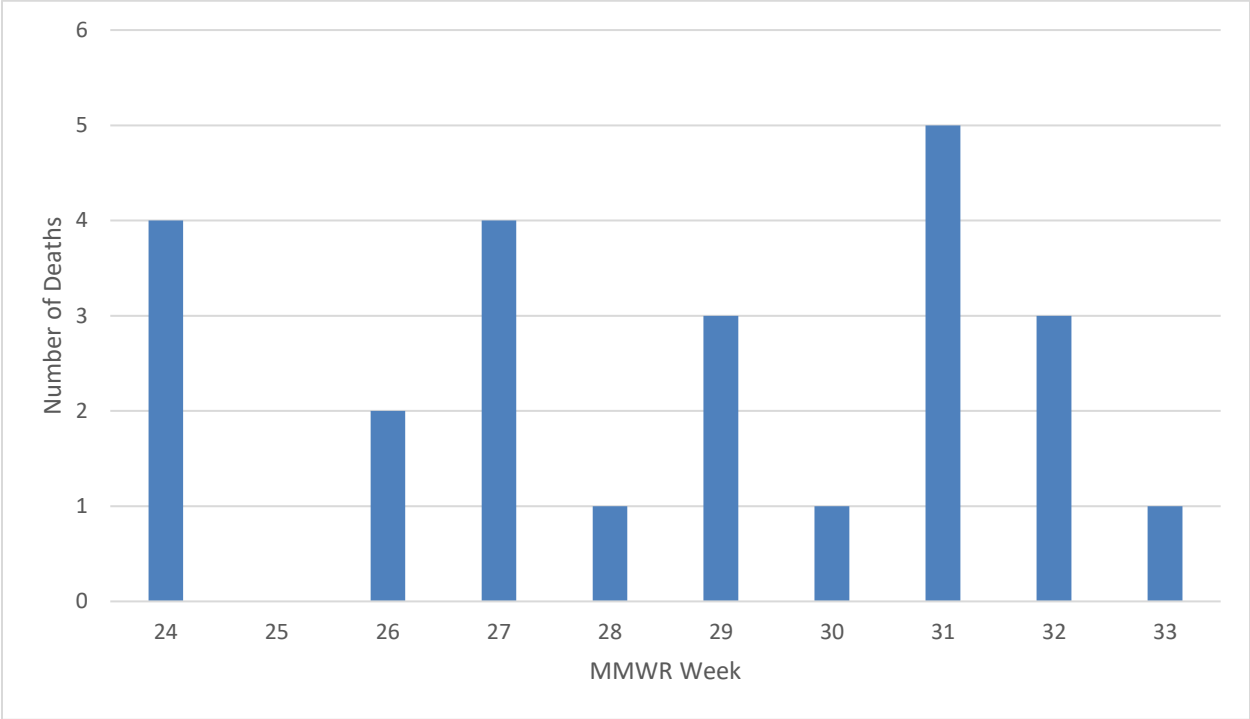
\*Note: hospitalization and ICU totals for each week are subject to change as new reports are received on a daily basis and are often delayed, causing underreporting in more recent MMWR weeks.

**Table 3. COVID-19 Deaths by Age Group and Time Period\* of Death, Washoe County, 2020-2022**

Time Period	Total Deaths	0-17 years	18-29 years	30-49 years	50-64 years	65+ years
2020 March - December	510	1	2	31	85	391
2021 Total	554	1	6	60	125	362
2022 January	86	0	1	6	14	65
2022 February	62	0	1	5	16	40
2022 March	25	0	0	0	2	23
2022 April	7	0	0	0	0	7
2022 May	6	0	0	2	0	4
2022 June	9	0	0	0	2	7
2022 July	9	0	0	0	0	9

\*Note: death totals are subject to change as new reports are received on a daily basis and are often delayed, causing underreporting in more recent months.

**Figure 4. Number of Deaths Occurring by MMWR Week\*, Washoe County, 2022**



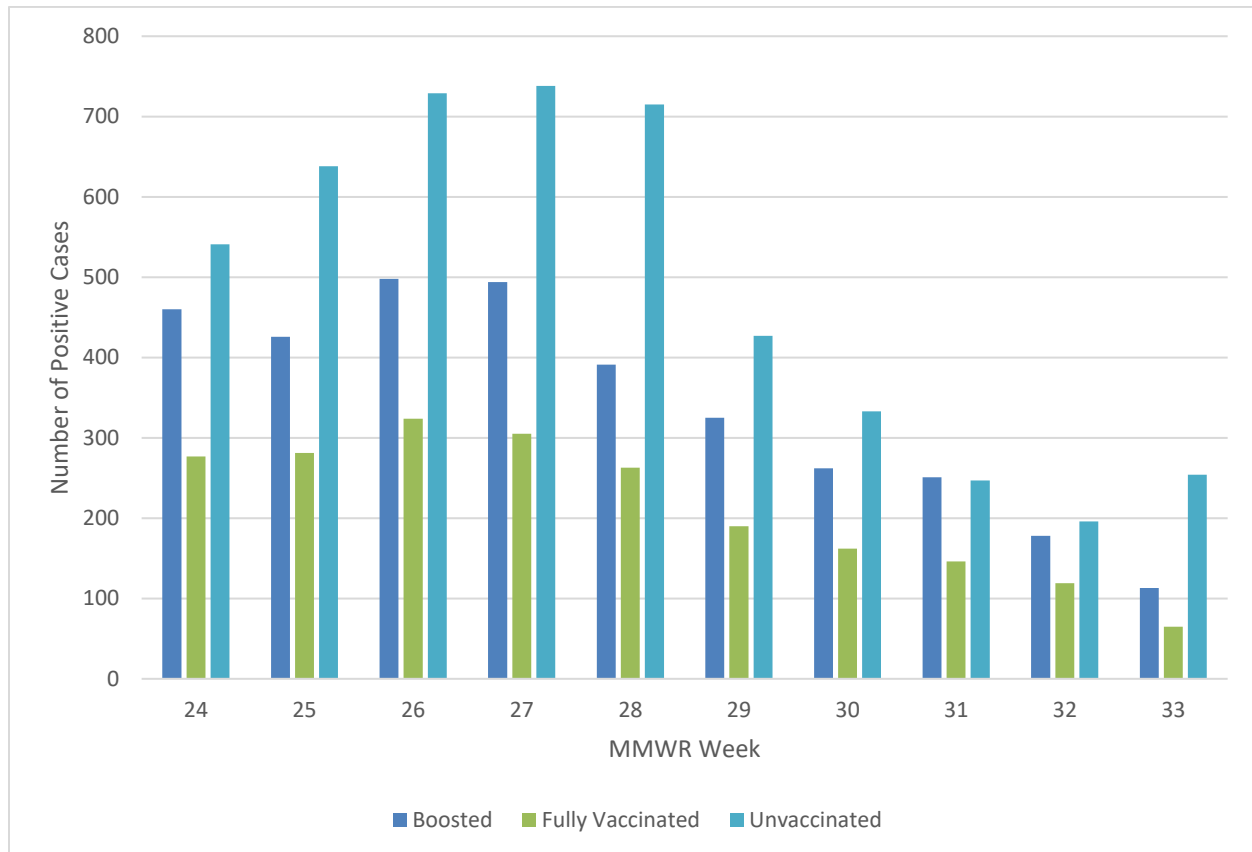
\*Note: death totals for each week are subject to change as new reports are received on a daily basis and are often delayed, causing underreporting in more recent MMWR weeks.

- At the time of publication, there have not been any deaths reported to have occurred during MMWR week 25.

## Breakthrough Cases

A breakthrough COVID-19 case is defined as a Washoe County resident who has SARS-CoV-2 PCR or antigen detected through laboratory testing 14 or more days after completing the primary series of an FDA-authorized COVID-19 vaccine.

**Figure 5. Number of Cases by Vaccination Status and MMWR Week\*, Washoe County, 2022**



\*Note: vaccination data for each week are subject to change as vaccinations are updated on a daily basis and are often on a delay internally, causing underreporting in more recent MMWR weeks.

- In recent weeks, cases that were unvaccinated composed higher percentages of total cases than those who were boosted or those who were fully vaccinated.
- During MMWR week 32, 39.8% (n = 196) of new cases were unvaccinated, while 36.1% (n = 178) and 24.1% (n = 119) of new cases were boosted and fully vaccinated, respectively.
- During MMWR week 33, the unvaccinated group represented 58.8% (n = 254) of newly reported cases, while individuals who were boosted represented 26.2% (n = 113) and fully vaccinated individuals represented 15.0% (n = 65) of newly reported cases.



**Table 4. Number and Percentage of Cases Reporting Hospitalization and ICU by Vaccination Status and MMWR Week\*, Washoe County, 2022**

All Cases				Unvaccinated Cases				Breakthrough Cases			
MMWR Week	New Cases	Total Hospitalized	Total ICU	Hospitalized		ICU		Hospitalized		ICU	
				#	% <sup>a</sup>	#	% <sup>b</sup>	#	% <sup>a</sup>	#	% <sup>b</sup>
24	1,278	42	5	19	45.2	3	60.0	23	54.8	2	40.0
25	1,345	32	3	20	62.5	3	100.0	12	37.5	0	0.0
26	1,551	42	8	14	33.3	3	37.5	28	66.7	5	62.5
27	1,537	53	5	26	49.1	1	20.0	27	50.9	4	80.0
28	1,369	44	2	24	54.5	2	100.0	20	45.5	0	0.0
29	942	33	3	13	39.4	2	66.7	20	60.6	1	33.3
30	757	41	3	17	41.5	1	33.3	24	58.5	2	66.7
31	644	29	1	16	55.2	1	100.0	13	44.8	0	0.0
32	493	16	4	11	68.8	3	75.0	5	31.2	1	25.0
33	432	8	1	6	75.0	0	0.0	2	25.0	1	100.0

\*Note: hospitalization and ICU totals for each week are subject to change as new reports are received on a daily basis and are often delayed, causing underreporting in more recent MMWR weeks.

<sup>a</sup> Calculated as the percentage of Total Hospitalizations by vaccination status for the MMWR week.

<sup>b</sup> Calculated as the percentage of Total ICU by vaccination status for the MMWR week.

## Vaccinations

Current dose and vaccination totals and percentages for Washoe County residents; data as of 8/24/2022.

**165,484** doses reported as administered per 100,000 population (to date)

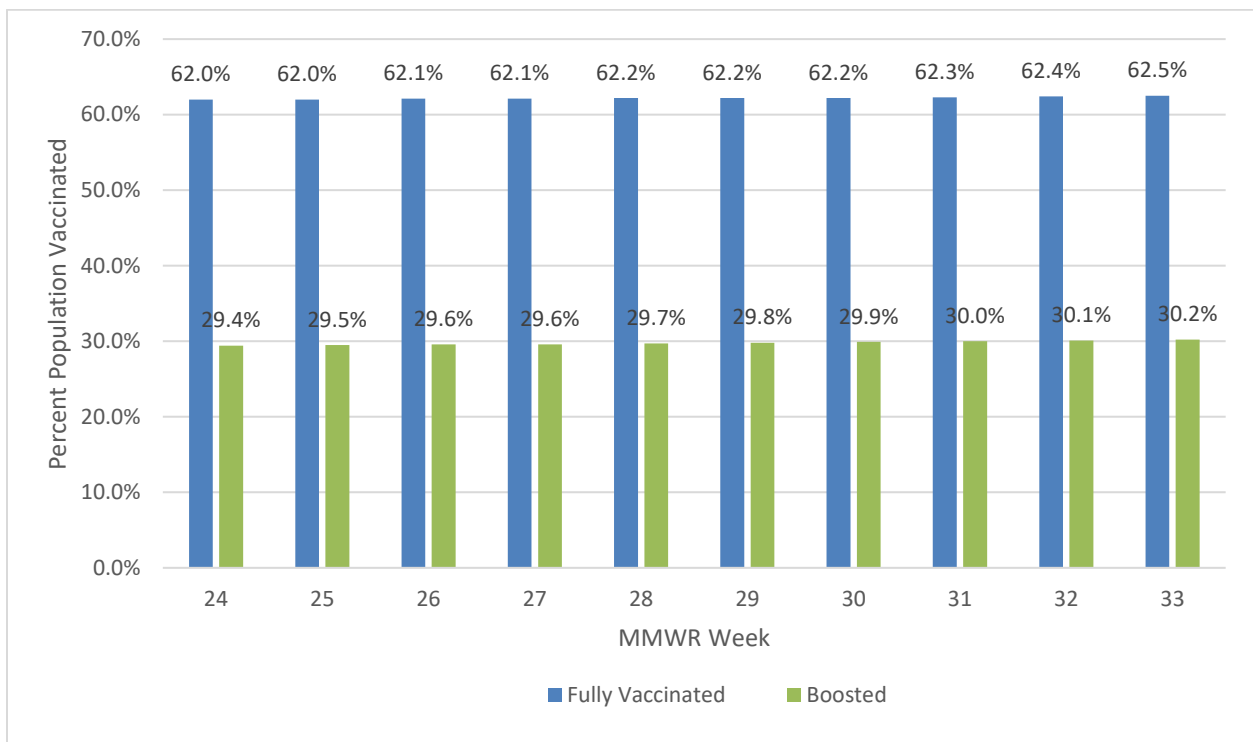
**70,534** (70.5% of population) vaccinations reported as initiated per 100,000 population

**62,459** (62.5% of population) vaccinations reported as completed per 100,000 population

**76.9%** of population 5 years and older initiated vaccination

**68.2%** of population 5 years and older completed vaccination

**Figure 6. Percentage of Population Fully Vaccinated and Boosted, Washoe County, 2022**



**Table 5. Percentage of Population Vaccinated by Sex, Age Group, and Race/Ethnicity\*, Washoe County, 2021-2022**

Select Demographics		% Population Fully Vaccinated
Sex	Female	67.2%
	Male	61.1%
Age Group	0-17 years	30.5%
	18-29 years	64.4%
	30-49 years	68.1%
	50-64 years	80.1%
	65+ years	86.7%
Race / Ethnicity*	American Indian/Alaska Native, Non-Hispanic**	35.2%
	Asian/Native Hawaiian/Other Pacific Islander, Non-Hispanic	46.8%
	Black, Non-Hispanic	38.6%
	Hispanic	50.3%
	White, Non-Hispanic	50.1%

\*Note: 23.1% of the total vaccinated population were recorded as “Unknown” or “Other” and therefore population percentages are unable to be calculated for those categories. Additionally, 2.5% of the total Washoe County population had missing demographic information and therefore were not included in the overall calculations.

\*\*Note: Tribal populations may be underrepresented as the data source does not include Indian Health Services (IHS) data, which may contain vaccination records for tribal members and those who access services through IHS clinics.

- In Washoe County, the age group with the highest vaccination rates are those 65+ years (86.7%), followed by the 50-64 age group (80.1%).
- In Washoe County, those who identify as Hispanic now have the highest percent vaccinated (50.3%), followed closely by White, Non-Hispanic (50.1%) and Asian/Native Hawaiian/Other Pacific Islander, Non-Hispanic (46.8%).

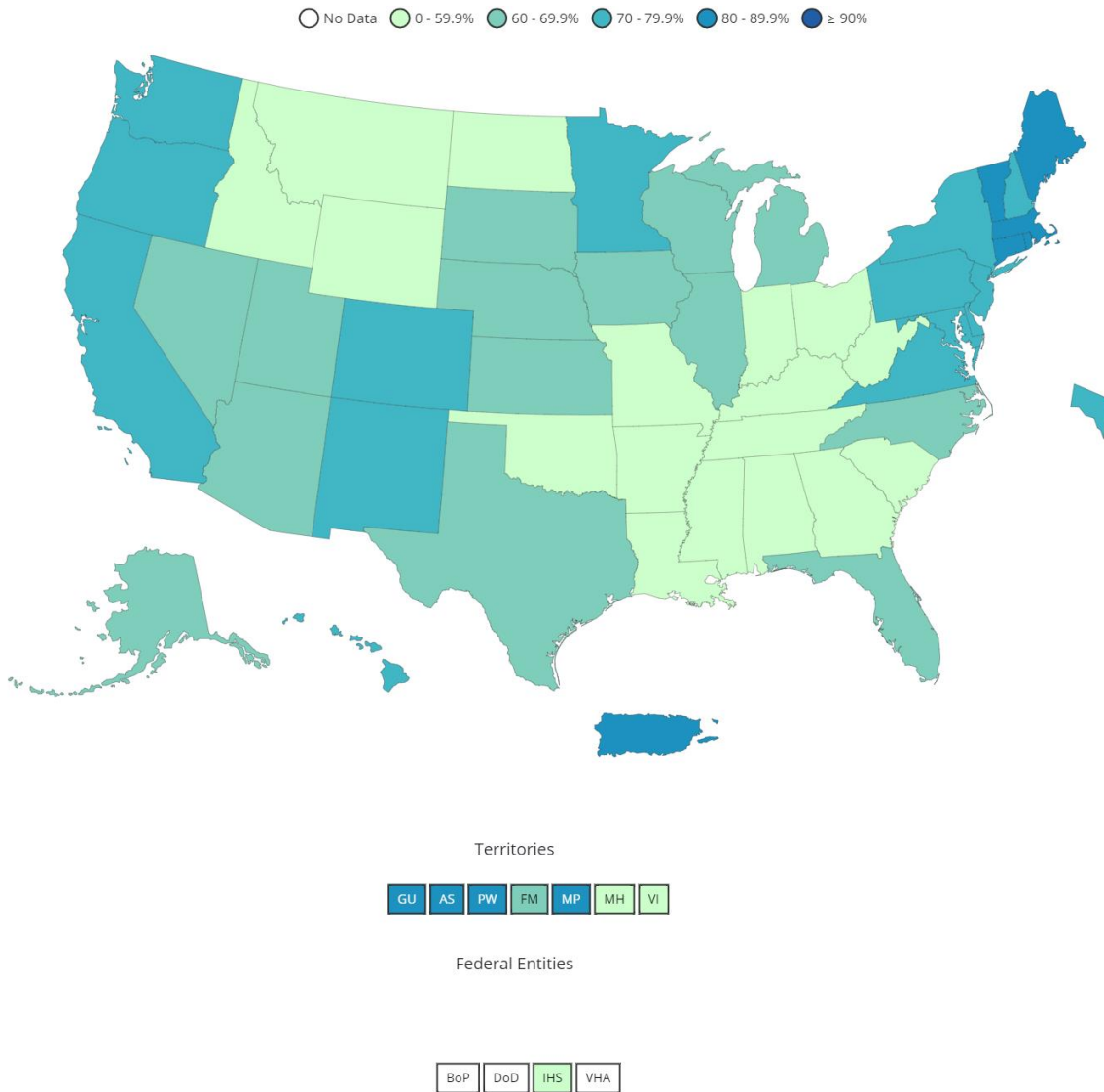
**Table 6. Percentage of Total Population Fully Vaccinated and Boosted by Washoe County, Nevada, and the United States, 2021-2022**

	% Population Fully Vaccinated	% Population Boosted
United States*	67.4	32.7
Nevada*	61.9	25.3
Washoe County**	62.5	30.2

\* Data Source: [https://covid.cdc.gov/covid-data-tracker/#vaccinations\\_vacc-people-fully-percent-total](https://covid.cdc.gov/covid-data-tracker/#vaccinations_vacc-people-fully-percent-total) as of 08/24/2022.

\*\* Data Source: WebIZ as of 08/24/2022.

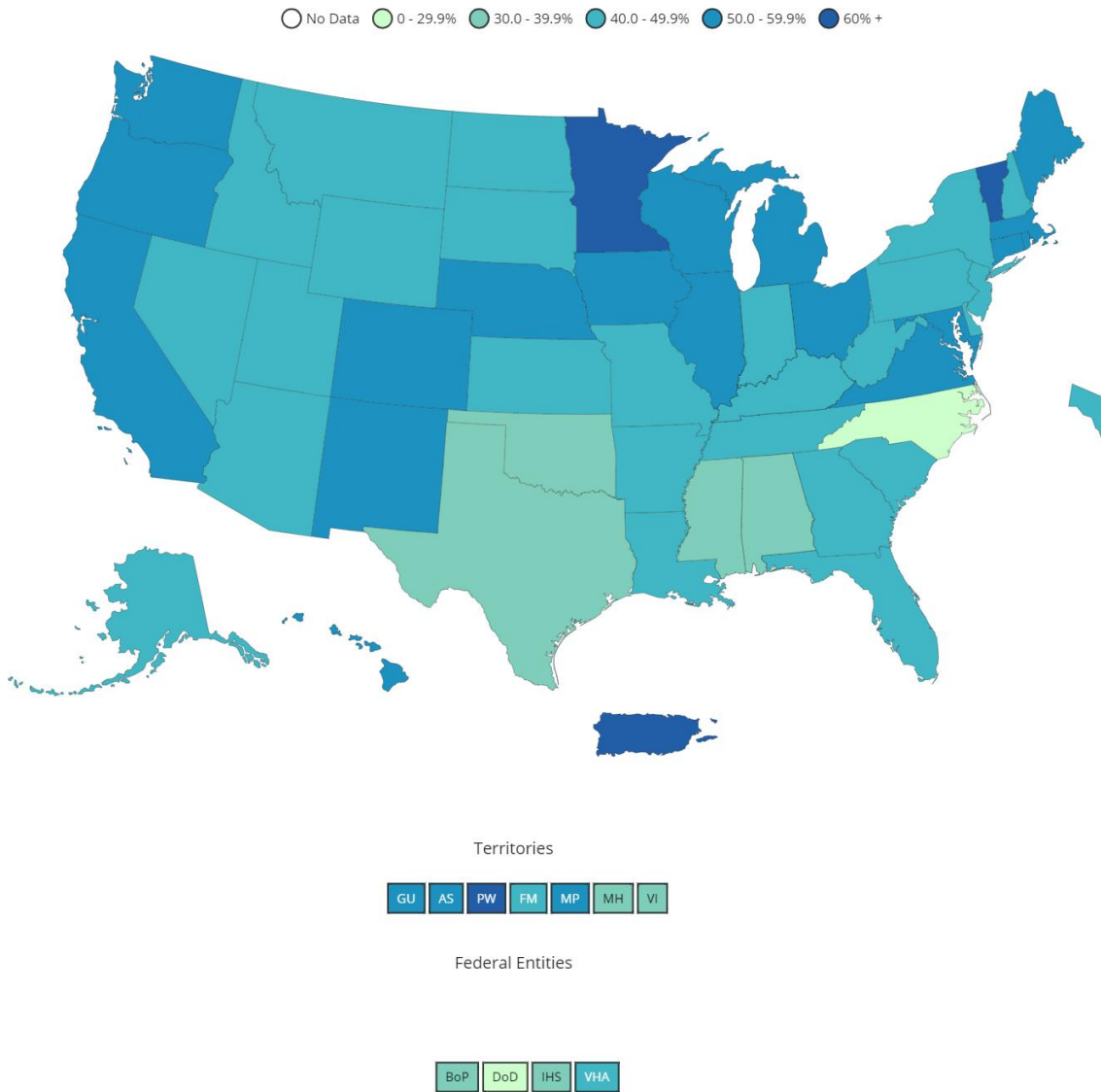
**Figure 7. Percent of People Fully Vaccinated Reported to the CDC by State/Territory and for Select Federal Entities for the Total Population**



Data for Federal Entities are presented here and are also incorporated into the respective jurisdictional totals

Data source for U.S. map for fully vaccinated people reported to the CDC, data as of 08/24/2022 6:00 AM ET. Posted: August 25, 2022, CDC COVID Data Tracker [https://covid.cdc.gov/covid-data-tracker/#vaccinations\\_vacc-people-fully-percent-total](https://covid.cdc.gov/covid-data-tracker/#vaccinations_vacc-people-fully-percent-total)

**Figure 8. Percent of Fully Vaccinated People with a First Booster Dose Reported to the CDC by State/Territory or Select Federal Entities for the Total Population**



Data for Federal Entities are presented here and are also incorporated into the respective jurisdictional totals

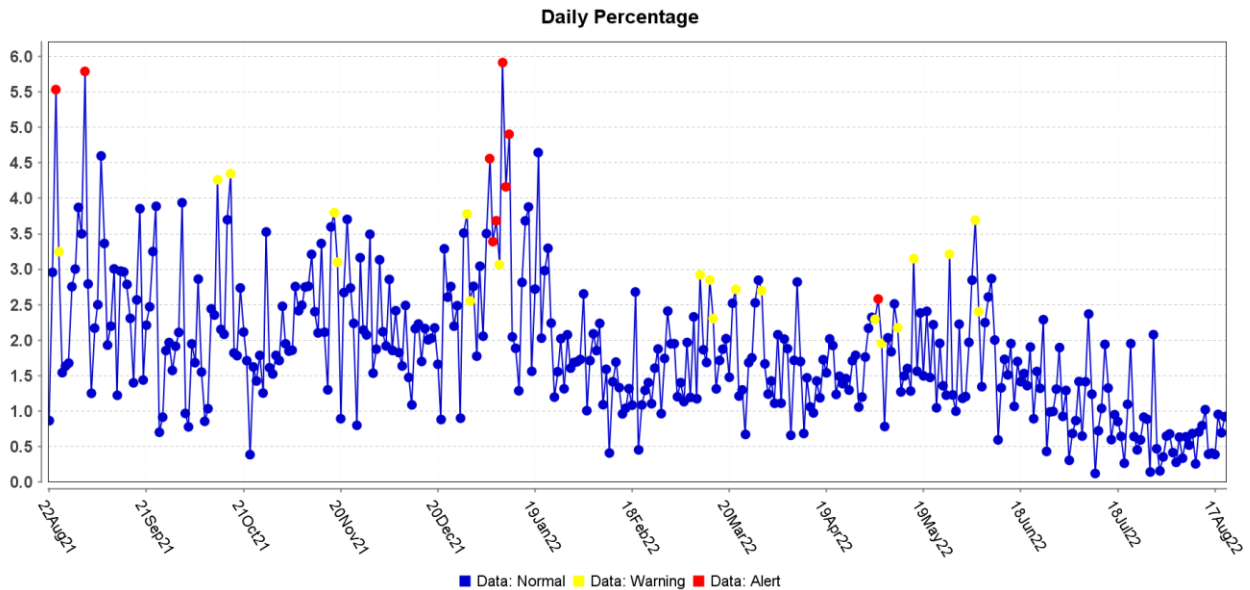
Data source for U.S. map for fully vaccinated people with a booster dose reported to the CDC, data as of 08/24/2022 6:00 AM ET. Posted: August 25, 2022, CDC COVID Data Tracker [https://covid.cdc.gov/covid-data-tracker/#vaccinations\\_vacc-people-additional-dose-totalpop](https://covid.cdc.gov/covid-data-tracker/#vaccinations_vacc-people-additional-dose-totalpop)

Note: Percent of fully vaccinated people with a booster dose is a different metric than percentage of total population who received a booster dose provided in Table 6.

## Surveillance Data

Percentage of persons indicating COVID-19 as the reason for visit to the Emergency Room (ER) is presented in Figure 9. The overlay below depicts COVID-19 in blue. Alerts appear as yellow and/or red dots. They indicate an unusually high percentage of COVID-19 visits according to ESSENCE algorithms.

**Figure 9. Percentage of ER Visits Due to COVID in the Last Year, Washoe County**



Data source: ESSENCE

## Glossary/Key Terms

### COVID-19 Case

Coronavirus Disease 2019 (COVID-19) cases counted in this document are confirmed or probable cases as determined by meeting confirmatory laboratory evidence, clinical criteria, and/or epidemiologic linkage as defined on the CDC website here:

<https://ndc.services.cdc.gov/case-definitions/coronavirus-disease-2019-2021/>

### COVID-19 Hospitalization

COVID-19 hospitalizations are counted as those hospitalized for greater than or equal to 24 hours and have a positive SARS-CoV-2 laboratory test.

### COVID-19 Death

As of January 1, 2022, both Confirmed and Probable COVID-19-associated deaths are included in the count.

- ([https://cdn.ymaws.com/www.cste.org/resource/resmgr/pdfs/pdfs2/20211222\\_interim-guidance.pdf](https://cdn.ymaws.com/www.cste.org/resource/resmgr/pdfs/pdfs2/20211222_interim-guidance.pdf))

Criteria for confirmed case death:

- The case meets the confirmed COVID-19 surveillance case definition, AND at least ONE of the following criteria is met:

- A case investigation determined that COVID-19 was the cause of death or contributed to the death.
- The death certificate indicates COVID-19 or an equivalent term as one of the causes of death, regardless of the time elapsed since specimen collection of the confirmatory laboratory test used to define the case.
- The death occurred within (and including) 30 days of specimen collection for the confirmatory laboratory test used to define the case and was due to natural causes (e.g., the Manner of Death is coded as “natural” on the death certificate.)

Criteria for probable case death:

- The case meets the probable COVID-19 case definition AND a case investigation determined that COVID-19 was the cause of death or contributed to the death; **OR**
- The case meets the probable COVID-19 surveillance case definition based on presumptive laboratory evidence AND death occurred within (and including) 30 days of specimen collection and was due to natural causes (e.g., the Manner of Death is coded as “natural” on the death certificate.); **OR**
- The case meets the probable COVID-19 surveillance case definition based on epidemiologic linkage and meeting clinical criteria, AND death occurred within (and including) 30 days of symptom onset and was due to natural causes (e.g., the Manner of Death is coded as “natural” on the death certificate.); **OR**
- The case meets the probable COVID-19 surveillance case definition based only on vital records criteria (i.e., a death certificate that lists COVID-19 disease or SARS-CoV-2 or an equivalent term as an underlying cause of death or a significant condition contributing to death and there is no confirmatory or presumptive laboratory evidence.)

## Links

### **WCHD COVID Dashboard**

<https://washoe.maps.arcgis.com/apps/dashboards/0db36fa8fa9c47758bc38210e4c23818>

### **WCHD website for COVID information and vaccine appointments**

<https://covid19washoe.com/>

**CDC COVID Data Tracker** <https://covid.cdc.gov/covid-data-tracker/>

### **Nevada State Public Health Laboratory created a new COVID-19 variant web page**

<https://www.nvsarscov2variant.com/variants>

### **Department of Health and Human Services Nevada Division of Public and Behavioral Health (DPBH) Technical Bulletins**

[https://dphh.nv.gov/Resources/Technical\\_Bulletins-New/](https://dphh.nv.gov/Resources/Technical_Bulletins-New/)

**WCHD COVID reports** <https://covid19washoe.com/daily-updates/washoe-county-covid-19-data-report/>