

COVID-19 Epidemiology Surveillance Program
MMWR Week #34 – 35, Aug. 21 – Sep. 3, 2022

Division of Epidemiology & Public Health Preparedness (EHPH) 775-328-2447

Adam Vazquez, MPH, COVID-19 Epidemiologist AVazquez@washoecounty.gov

Lissa Callahan, COVID-19 Statistician LCallahan@washoecounty.gov

Weekly Summary*

Metrics	MMWR Week 34	MMWR Week 35
Number of New Cases	429	506
New Cases per 100,000 Population	88	104
Number of New Breakthrough Cases	231	233
Hospitalizations**	10	12
Deaths**	1	1

- Completed Vaccination Total through 9/5/2022: 305,549 persons

*For definition and specifics on metrics summarized, please refer to corresponding sections.

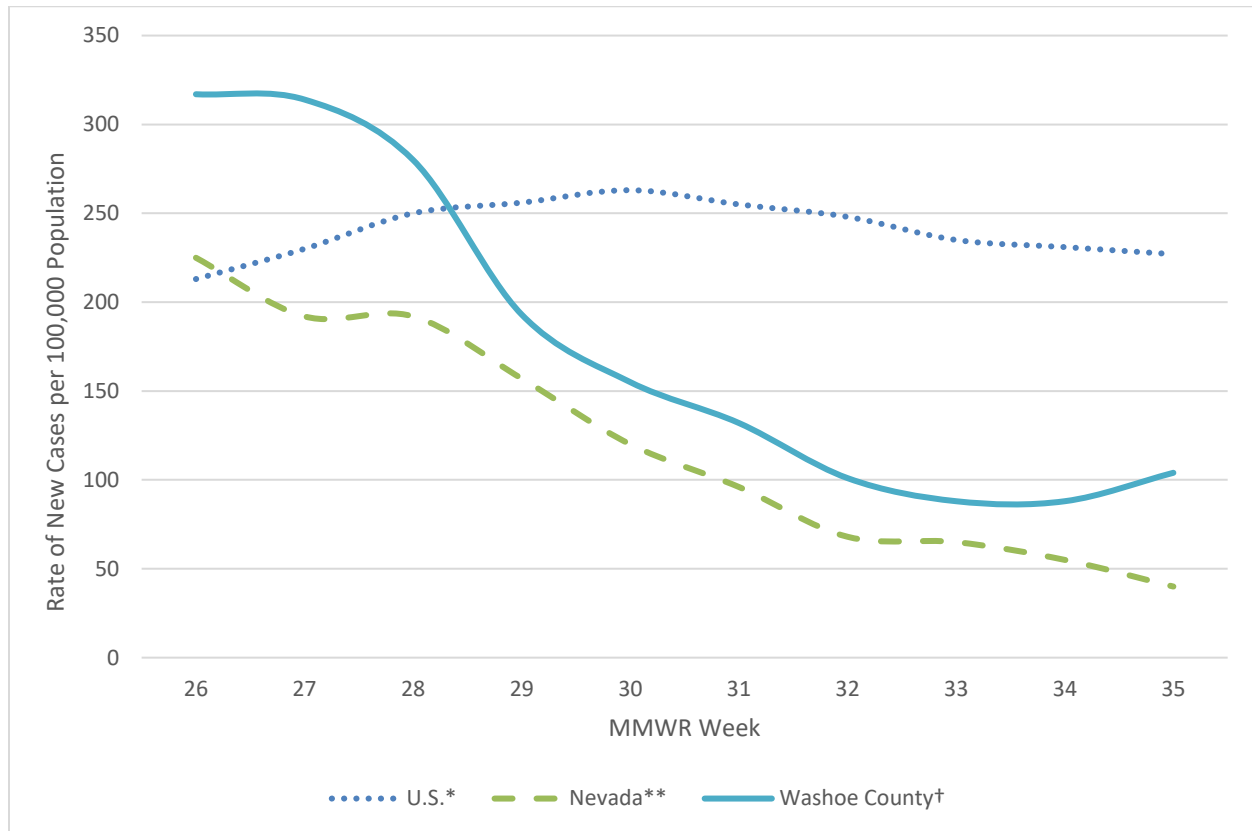
**Note: hospitalization and death totals for each week are subject to change as new reports are received on a daily basis and are often delayed, causing underreporting in more recent MMWR weeks.

Key message(s)

- The number of cases reported in Washoe County decreased each week from MMWR week 26 through MMWR week 34 but increased in MMWR week 35.
- Only 30.3% of Washoe County’s population has received a booster dose.

COVID-19 Case Information

Figure 1. Rate of New Cases Reported by MMWR Week, Washoe County, Nevada, and the United States, 2022



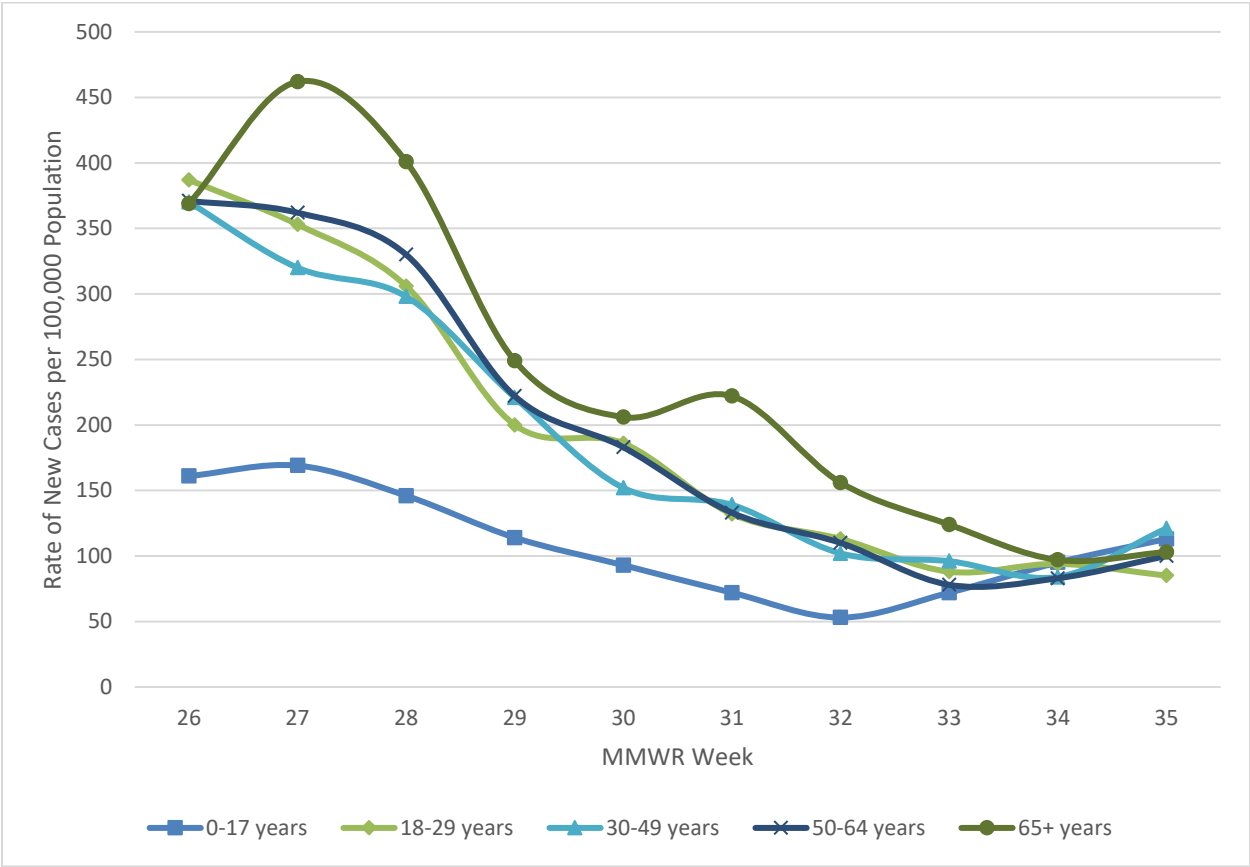
*Data source: <https://data.cdc.gov/Public-Health-Surveillance/United-States-COVID-19-County-Level-of-Community-T/8396-v7yb>, data by date reported

**Data Source: <https://nvhealthresponse.nv.gov/#covid-data-tracker>, data by sample collection date

†Data source: Internal, WCHD, data by date reported

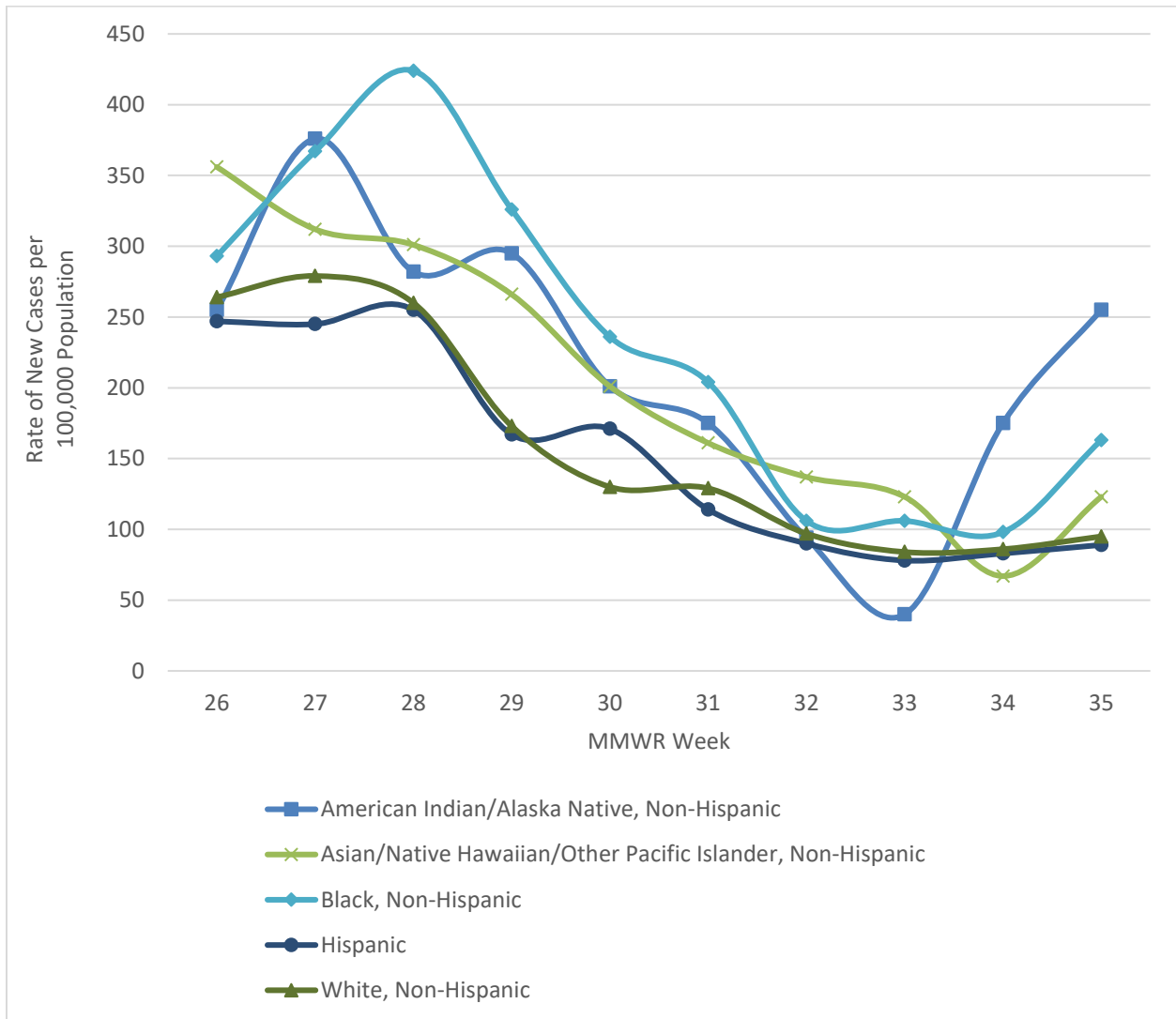
- In Washoe County, case counts increased from to 88 new cases per 100,000 population in MMWR week 34 to 104 new cases per 100,000 population in MMWR week 35. This came after a decrease from a ten-week high of 317 new cases per 100,000 population in MMWR week 26.
- In Nevada, case counts decreased from 225 new cases per 100,000 population in MMWR week 26 to 40 new cases per 100,000 population in MMWR week 35.
- In the United States, case counts decreased from a ten-week high of 263 new cases per 100,000 population in MMWR week 30 to 227 new cases per 100,000 population in MMWR week 35.

Figure 2. Rate of New Cases Reported by Age Group and MMWR Week, Washoe County, 2022



- The age group with the highest case rate during MMWR week 35 was the 30-49 age group with 121 new cases per 100,000 population.
- The age group with the lowest case rate during MMWR week 35 was the 18-29 age group with 85 new cases per 100,000 population, which is a decrease from a ten-week high in MMWR week 26 of 387 new cases per 100,000 population.

Figure 3. Rate of New Cases Reported by Race/Ethnicity* and MMWR Week, Washoe County, 2022



*Note: From MMWR week 26 to MMWR week 35, 9.7% of cases were recorded as “Declined to answer”, “Multiple”, “Other”, or “Unknown” and rates per 100,000 population are unable to be calculated for those categories.

- In MMWR week 35, those who identified as American Indian/Alaska Native, Non-Hispanic had the highest rate of new cases at 255 new cases per 100,000 population.
- From MMWR weeks 28 through 34, those who identified as Black, Non-Hispanic decreased from 424 to 98 new cases per 100,000 population. In MMWR week 35, they increased to 163 new cases per 100,000 population.
- In MMWR week 35, those who identified as Hispanic had the lowest rate of new cases per 100,000 population at 89 new cases per 100,000 population.

Hospitalizations, ICU Status, & Deaths

COVID-19 hospitalizations are defined as those hospitalized for greater than or equal to 24 hours and have a positive SARS-CoV-2 laboratory test.

COVID-19 deaths are defined as decedents who have had a positive PCR COVID-19 lab report \leq 30 days from death or post-mortem. This includes deaths attributed to COVID-19 related illnesses and, if not specifically listed on death certificate, a positive PCR COVID-19 lab, dependent on the manner of death. See full definition in Glossary/Key Terms at the end of the report.

Table 1. Number and Percent of New Cases Reported by Age and Hospitalization Status, MMWR Weeks* 34 and 35, Washoe County, 2022

			Age Group				
			0-17	18-29	30-49	50-64	65+
MMWR Week	34	Total Cases	102	76	103	72	76
		% Hospitalized	2.0%	1.3%	1.0%	2.8%	5.3%
	35	Total Cases	122	68	148	87	81
		% Hospitalized	1.6%	2.9%	0.7%	1.1%	7.4%

* Note: hospitalization totals for each week are subject to change as new reports are received on a daily basis and are often delayed, causing underreporting in more recent MMWR weeks.

- During both MMWR week 34 and MMWR week 35, the age group with the highest percentage of total cases resulting in hospitalization were those 65+.

Table 2. Number and Percentage of Cases Reported by Hospitalization and ICU Status by MMWR Week*, Washoe County, 2022

MMWR Week	New Cases	Hospitalized		ICU	
		#	%	#	%
26	1,549	43	2.8	8	0.5
27	1,535	54	3.5	6	0.4
28	1,369	44	3.2	2	0.1
29	942	33	3.5	3	0.3
30	756	42	5.6	3	0.4
31	644	31	4.8	1	0.2
32	491	18	3.7	4	0.8
33	431	12	2.8	2	0.5
34	429	10	2.3	2	0.5
35	506	12	2.4	0	0.0

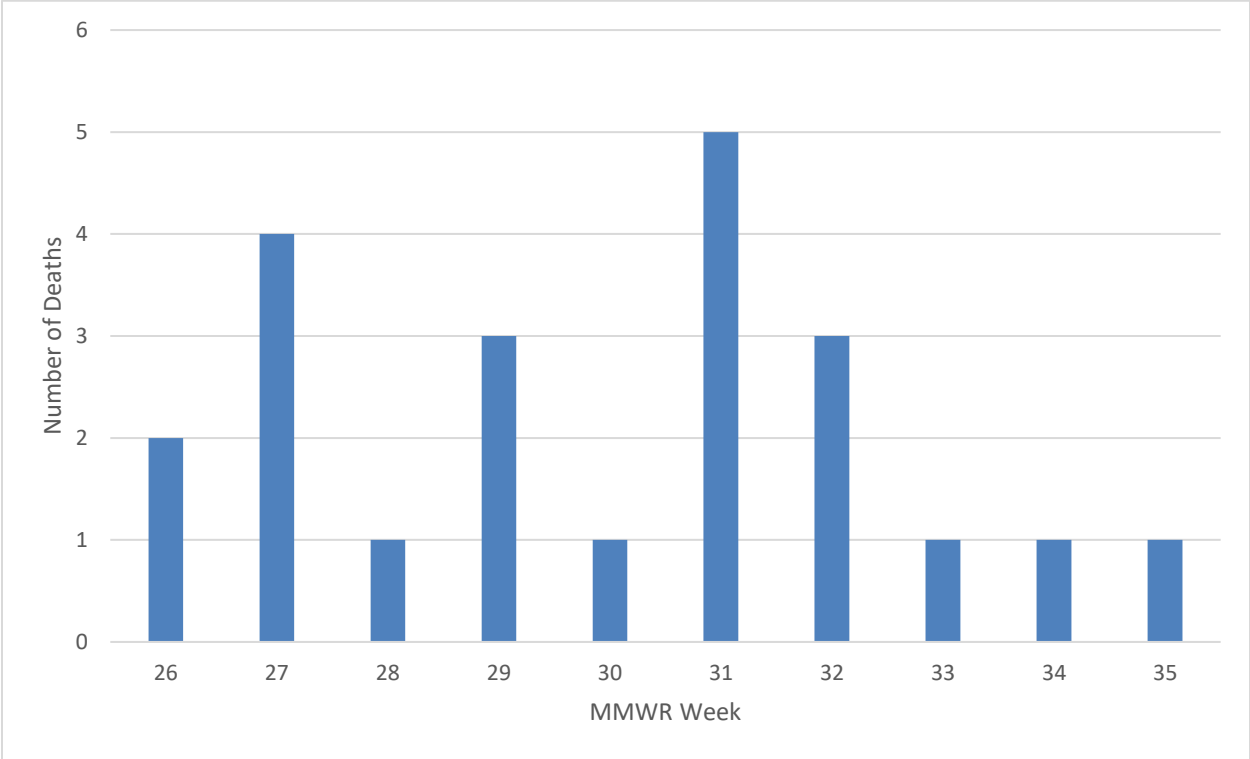
*Note: hospitalization and ICU totals for each week are subject to change as new reports are received on a daily basis and are often delayed, causing underreporting in more recent MMWR weeks.

Table 3. COVID-19 Deaths by Age Group and Time Period* of Death, Washoe County, 2020-2022

Time Period	Total Deaths	0-17 years	18-29 years	30-49 years	50-64 years	65+ years
2020 March - December	510	1	2	31	85	391
2021 Total	554	1	6	60	125	362
2022 January	86	0	1	6	14	65
2022 February	62	0	1	5	16	40
2022 March	25	0	0	0	2	23
2022 April	7	0	0	0	0	7
2022 May	6	0	0	2	0	4
2022 June	9	0	0	0	2	7
2022 July	9	0	0	0	0	9
2022 August	11	0	0	0	0	11

*Note: death totals are subject to change as new reports are received on a daily basis and are often delayed, causing underreporting in more recent months.

Figure 4. Number of Deaths Occurring by MMWR Week*, Washoe County, 2022

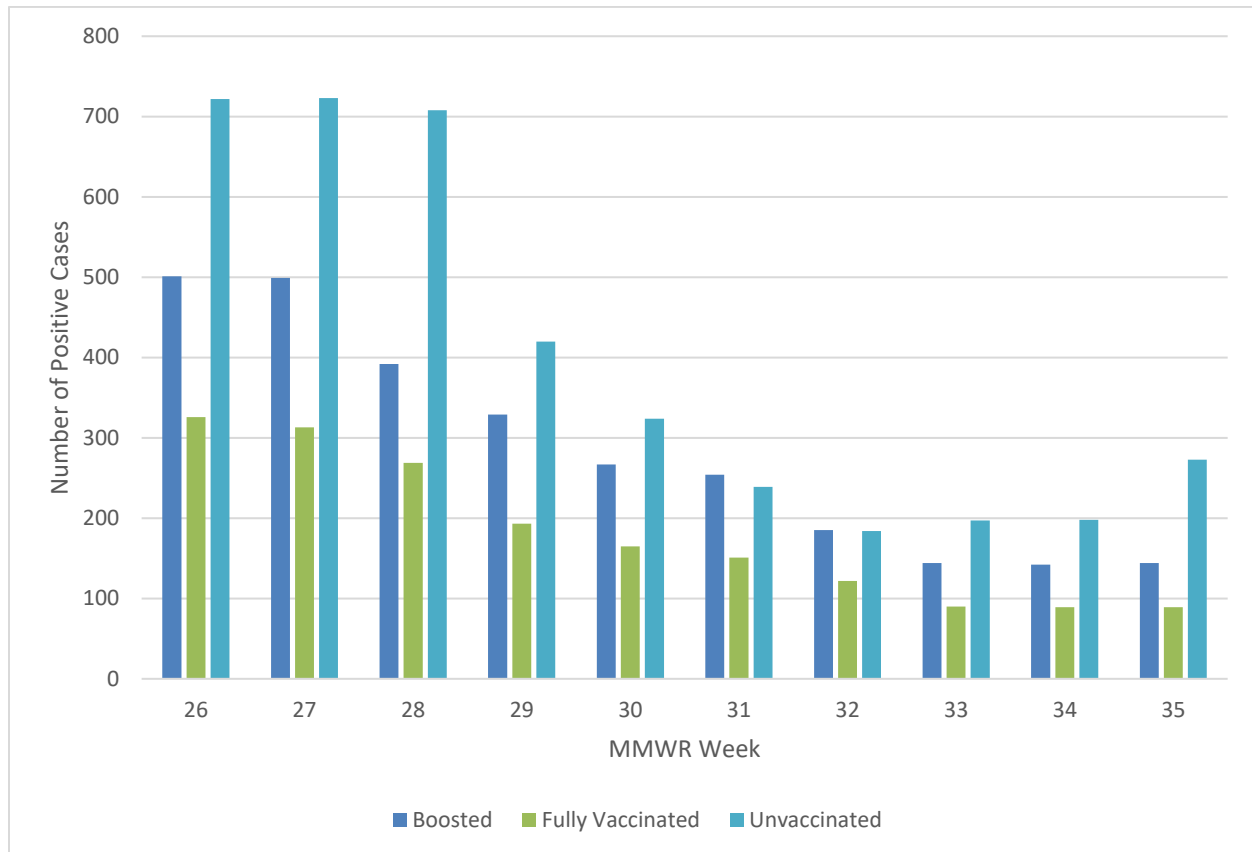


*Note: death totals for each week are subject to change as new reports are received on a daily basis and are often delayed, causing underreporting in more recent MMWR weeks.

Breakthrough Cases

A breakthrough COVID-19 case is defined as a Washoe County resident who has SARS-CoV-2 PCR or antigen detected through laboratory testing 14 or more days after completing the primary series of an FDA-authorized COVID-19 vaccine.

Figure 5. Number of Cases by Vaccination Status and MMWR Week*, Washoe County, 2022



*Note: vaccination data for each week are subject to change as vaccinations are updated on a daily basis and are often on a delay internally, causing underreporting in more recent MMWR weeks.

- In recent weeks, cases that were unvaccinated composed higher percentages of total cases than those who were boosted or those who were fully vaccinated.
- During MMWR week 34, 46.2% (n = 198) of new cases were unvaccinated, while 33.1% (n = 142) and 20.7% (n = 89) of new cases were boosted and fully vaccinated, respectively.
- During MMWR week 35, the unvaccinated group represented 54.0% (n = 273) of newly reported cases, while individuals who were boosted represented 28.5% (n = 144) and fully vaccinated individuals represented 17.6% (n = 89) of newly reported cases.

Table 4. Number and Percentage of Cases Reporting Hospitalization and ICU by Vaccination Status and MMWR Week*, Washoe County, 2022

All Cases				Unvaccinated Cases				Breakthrough Cases			
MMWR Week	New Cases	Total Hospitalized	Total ICU	Hospitalized		ICU		Hospitalized		ICU	
				#	% ^a	#	% ^b	#	% ^a	#	% ^b
26	1,549	43	8	15	34.9	3	37.5	28	65.1	5	62.5
27	1,535	54	6	25	46.3	2	33.3	29	53.7	4	66.7
28	1,369	44	2	24	54.5	2	100.0	20	45.5	0	0.0
29	942	33	3	13	39.4	2	66.7	20	60.6	1	33.3
30	756	42	3	18	42.9	1	33.3	24	57.1	2	66.7
31	644	31	1	18	58.1	1	100.0	13	41.9	0	0.0
32	491	18	4	12	66.7	3	75.0	6	33.3	1	25.0
33	431	12	2	7	58.3	0	0.0	5	41.7	2	100.0
34	429	10	2	6	60.0	1	50.0	4	40.0	1	50.0
35	506	12	0	5	41.7	0	0.0	7	58.3	0	0.0

*Note: hospitalization and ICU totals for each week are subject to change as new reports are received on a daily basis and are often delayed, causing underreporting in more recent MMWR weeks.

^a Calculated as the percentage of Total Hospitalizations by vaccination status for the MMWR week.

^b Calculated as the percentage of Total ICU by vaccination status for the MMWR week.

Vaccinations

Current dose and vaccination totals and percentages for Washoe County residents; data as of 9/6/2022.

165,819 doses reported as administered per 100,000 population (to date)

70,625 (70.6% of population) vaccinations reported as initiated per 100,000 population

62,598 (62.6% of population) vaccinations reported as completed per 100,000 population

76.9% of population 5 years and older initiated vaccination

68.3% of population 5 years and older completed vaccination

Figure 6. Percentage of Population Fully Vaccinated and Boosted, Washoe County, 2022

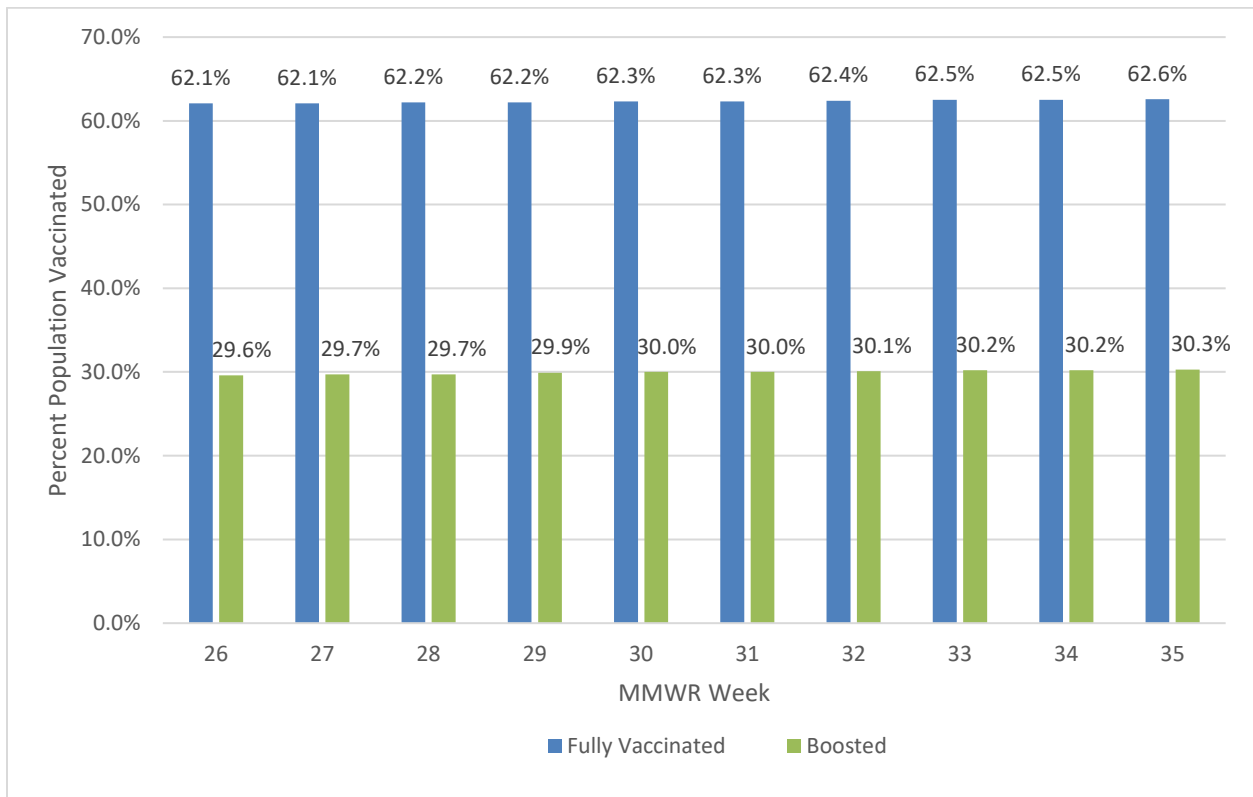


Table 5. Percentage of Population Vaccinated by Sex, Age Group, and Race/Ethnicity*, Washoe County, 2021-2022

Select Demographics		% Population Fully Vaccinated
Sex	Female	67.3%
	Male	61.2%
Age Group	0-17 years	30.7%
	18-29 years	64.5%
	30-49 years	68.2%
	50-64 years	80.1%
	65+ years	86.7%
Race / Ethnicity*	American Indian/Alaska Native, Non-Hispanic**	35.2%
	Asian/Native Hawaiian/Other Pacific Islander, Non-Hispanic	46.8%
	Black, Non-Hispanic	38.7%
	Hispanic	50.4%
	White, Non-Hispanic	50.1%

*Note: 23.1% of the total vaccinated population were recorded as “Unknown” or “Other” and therefore population percentages are unable to be calculated for those categories. Additionally, 2.5% of the total Washoe County population had missing demographic information and therefore were not included in the overall calculations.

**Note: Tribal populations may be underrepresented as the data source does not include Indian Health Services (IHS) data, which may contain vaccination records for tribal members and those who access services through IHS clinics.

- In Washoe County, the age group with the highest vaccination rates are those 65+ years (86.7%), followed by the 50-64 age group (80.1%).
- In Washoe County, those who identify as Hispanic have the highest percent vaccinated (50.4%), followed closely by White, Non-Hispanic (50.1%) and Asian/Native Hawaiian/Other Pacific Islander, Non-Hispanic (46.8%).

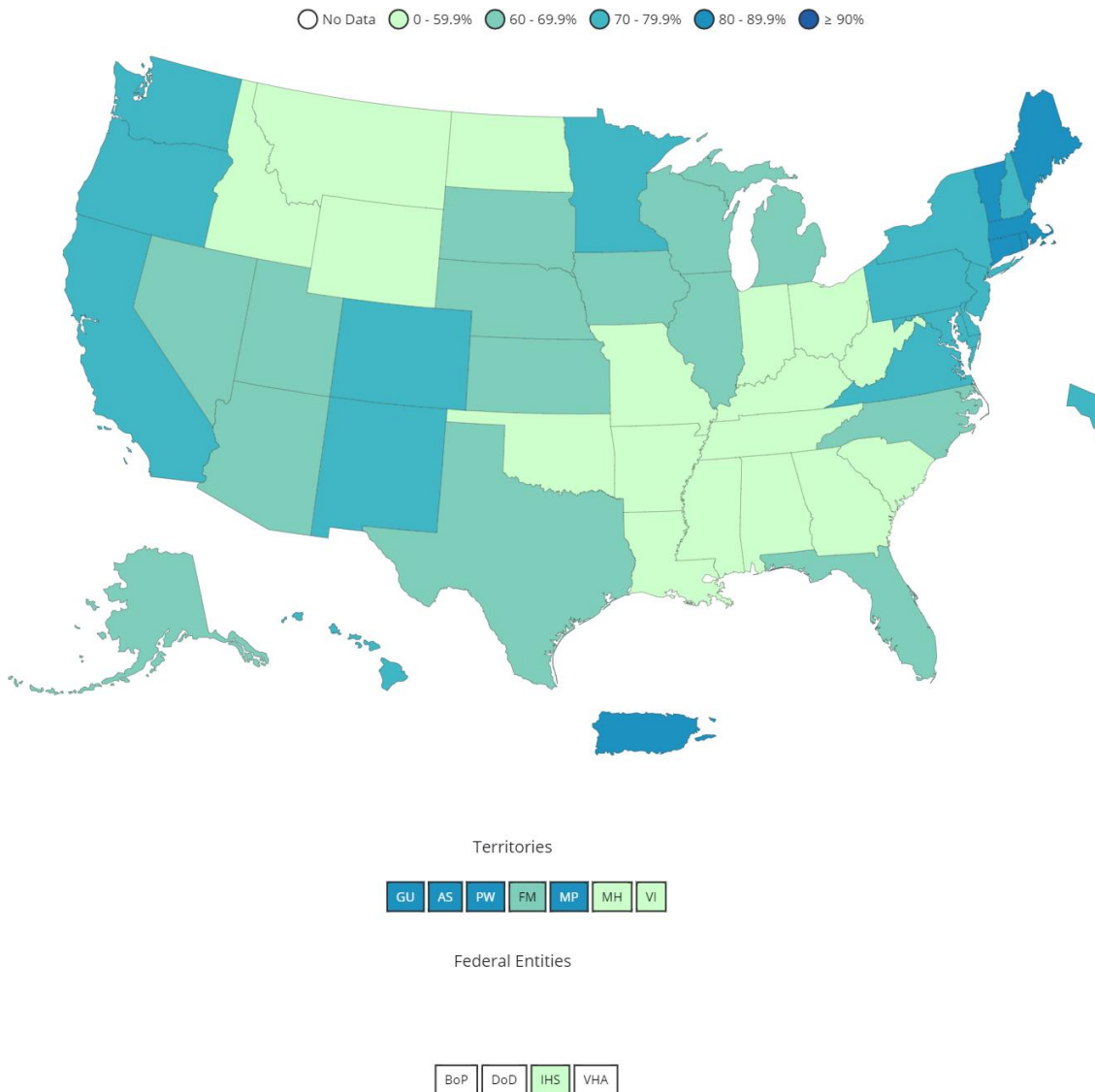
Table 6. Percentage of Total Population Fully Vaccinated and Boosted by Washoe County, Nevada, and the United States, 2021-2022

	% Population Fully Vaccinated	% Population Boosted
United States*	67.6	32.8
Nevada*	62.0	25.4
Washoe County**	62.6	30.3

* Data Source: https://covid.cdc.gov/covid-data-tracker/#vaccinations_vacc-people-fully-percent-total as of 09/07/2022.

** Data Source: WebIZ as of 09/06/2022.

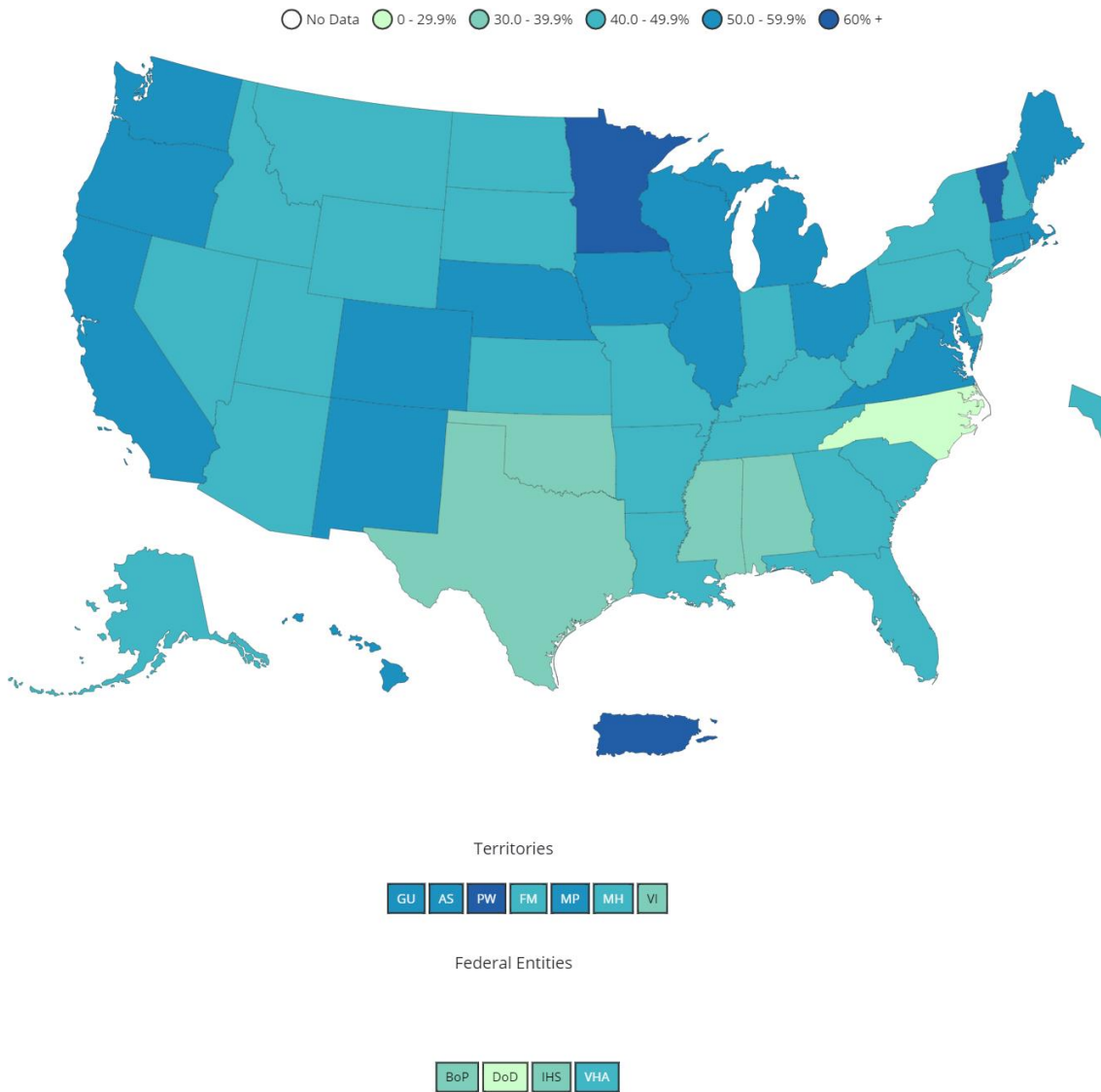
Figure 7. Percent of People Fully Vaccinated Reported to the CDC by State/Territory and for Select Federal Entities for the Total Population



Data for Federal Entities are presented here and are also incorporated into the respective jurisdictional totals

Data source for U.S. map for fully vaccinated people reported to the CDC, data as of 09/07/2022 6:00 AM ET. Posted: September 08, 2022, CDC COVID Data Tracker https://covid.cdc.gov/covid-data-tracker/#vaccinations_vacc-people-fully-percent-total

Figure 8. Percent of Fully Vaccinated People with a First Booster Dose Reported to the CDC by State/Territory or Select Federal Entities for the Total Population



Data for Federal Entities are presented here and are also incorporated into the respective jurisdictional totals

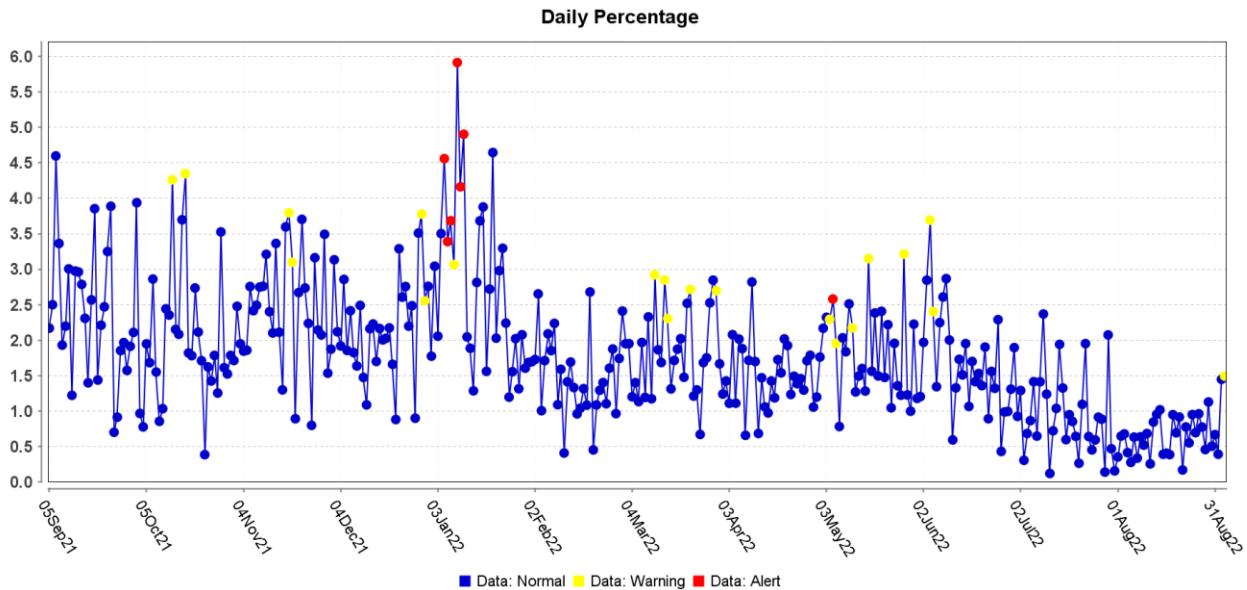
Data source for U.S. map for fully vaccinated people with a booster dose reported to the CDC, data as of 09/07/2022 6:00 AM ET. Posted: September 08, 2022, CDC COVID Data Tracker https://covid.cdc.gov/covid-data-tracker/#vaccinations_vacc-people-additional-dose-totalpop

Note: Percent of fully vaccinated people with a booster dose is a different metric than percentage of total population who received a booster dose provided in Table 6.

Surveillance Data

Percentage of persons indicating COVID-19 as the reason for visit to the Emergency Room (ER) is presented in Figure 9. The overlay below depicts COVID-19 in blue. Alerts appear as yellow and/or red dots. They indicate an unusually high percentage of COVID-19 visits according to ESSENCE algorithms.

Figure 9. Percentage of ER Visits Due to COVID in the Last Year, Washoe County



Data source: ESSENCE

Glossary/Key Terms

COVID-19 Case

Coronavirus Disease 2019 (COVID-19) cases counted in this document are confirmed or probable cases as determined by meeting confirmatory laboratory evidence, clinical criteria, and/or epidemiologic linkage as defined on the CDC website here:

<https://ndc.services.cdc.gov/case-definitions/coronavirus-disease-2019-2021/>

COVID-19 Hospitalization

COVID-19 hospitalizations are counted as those hospitalized for greater than or equal to 24 hours and have a positive SARS-CoV-2 laboratory test.

COVID-19 Death

As of January 1, 2022, both Confirmed and Probable COVID-19-associated deaths are included in the count.

- (https://cdn.ymaws.com/www.cste.org/resource/resmgr/pdfs/pdfs2/20211222_interim-guidance.pdf)

Criteria for confirmed case death:

- The case meets the confirmed COVID-19 surveillance case definition, AND at least ONE of the following criteria is met:

- A case investigation determined that COVID-19 was the cause of death or contributed to the death.
- The death certificate indicates COVID-19 or an equivalent term as one of the causes of death, regardless of the time elapsed since specimen collection of the confirmatory laboratory test used to define the case.
- The death occurred within (and including) 30 days of specimen collection for the confirmatory laboratory test used to define the case and was due to natural causes (e.g., the Manner of Death is coded as “natural” on the death certificate.)

Criteria for probable case death:

- The case meets the probable COVID-19 case definition AND a case investigation determined that COVID-19 was the cause of death or contributed to the death; **OR**
- The case meets the probable COVID-19 surveillance case definition based on presumptive laboratory evidence AND death occurred within (and including) 30 days of specimen collection and was due to natural causes (e.g., the Manner of Death is coded as “natural” on the death certificate.); **OR**
- The case meets the probable COVID-19 surveillance case definition based on epidemiologic linkage and meeting clinical criteria, AND death occurred within (and including) 30 days of symptom onset and was due to natural causes (e.g., the Manner of Death is coded as “natural” on the death certificate.); **OR**
- The case meets the probable COVID-19 surveillance case definition based only on vital records criteria (i.e., a death certificate that lists COVID-19 disease or SARS-CoV-2 or an equivalent term as an underlying cause of death or a significant condition contributing to death and there is no confirmatory or presumptive laboratory evidence.)

Links

WCHD COVID Dashboard

<https://washoe.maps.arcgis.com/apps/dashboards/0db36fa8fa9c47758bc38210e4c23818>

WCHD website for COVID information and vaccine appointments

<https://covid19washoe.com/>

CDC COVID Data Tracker <https://covid.cdc.gov/covid-data-tracker/>

Nevada State Public Health Laboratory created a new COVID-19 variant web page

<https://www.nvsarscov2variant.com/variants>

Department of Health and Human Services Nevada Division of Public and Behavioral Health (DPBH) Technical Bulletins

https://dphh.nv.gov/Resources/Technical_Bulletins-New/

WCHD COVID reports <https://covid19washoe.com/daily-updates/washoe-county-covid-19-data-report/>