

COVID-19 Epidemiology Surveillance Program
MMWR Week #38 – 39, Sep. 18 – Oct. 1, 2022

Division of Epidemiology & Public Health Preparedness (EHPH) 775-328-2447

Adam Vazquez, MPH, COVID-19 Epidemiologist AVazquez@washoecounty.gov

Lissa Callahan, COVID-19 Statistician LCallahan@washoecounty.gov

Weekly Summary*

| Metrics | MMWR Week 38 | MMWR Week 39 |
|----------------------------------|--------------|--------------|
| Number of New Cases | 281 | 223 |
| New Cases per 100,000 Population | 58 | 46 |
| Number of New Breakthrough Cases | 190 | 98 |
| Hospitalizations** | 5 | 3 |
| Deaths** | 2 | 0 |

- Completed Primary Series of Vaccination Total through 10/2/2022: 306,843 persons

*For definition and specifics on metrics summarized, please refer to corresponding sections.

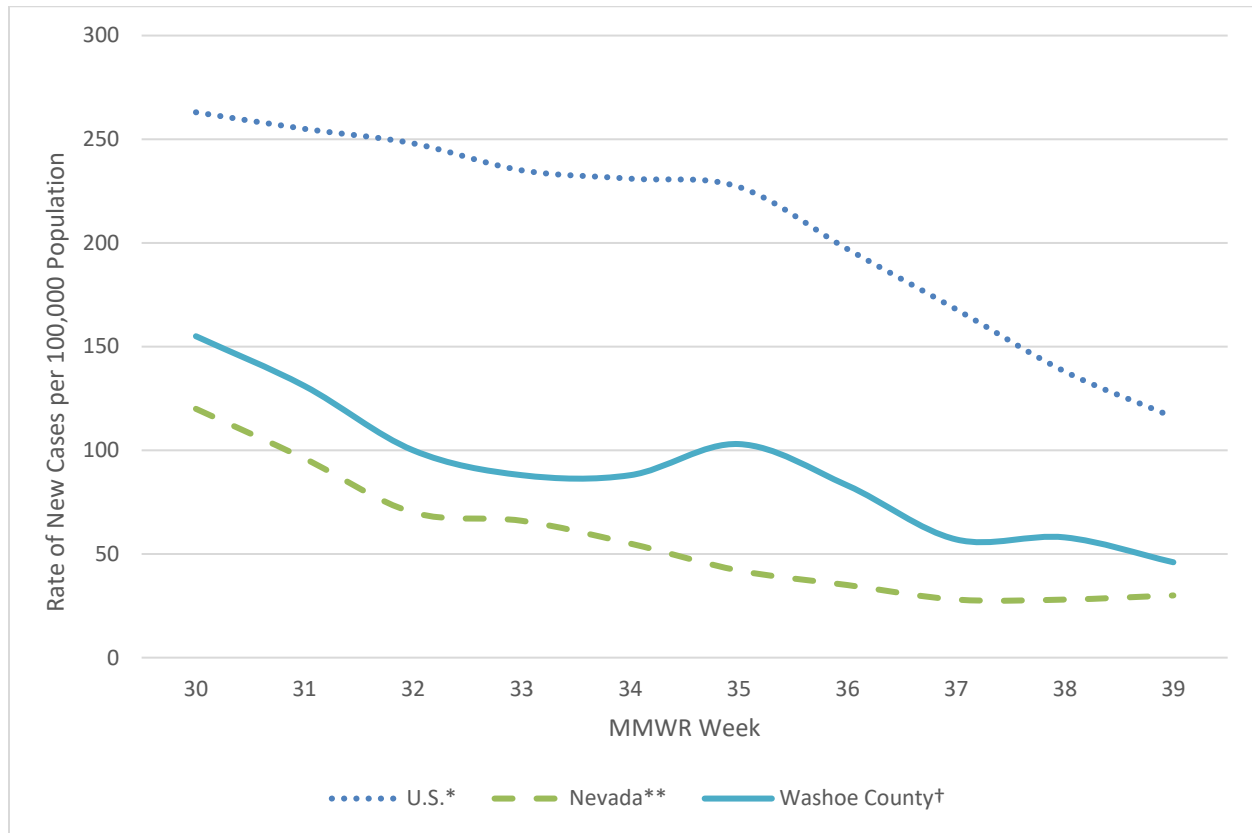
**Note: hospitalization and death totals for each week are subject to change as new reports are received on a daily basis and are often delayed, causing underreporting in more recent MMWR weeks.

Key message(s)

- The number of cases reported in Washoe County continue to decrease.
- Only 30.7% of Washoe County’s population has received a first booster dose.

COVID-19 Case Information

Figure 1. Rate of New Cases Reported by MMWR Week, Washoe County, Nevada, and the United States, 2022



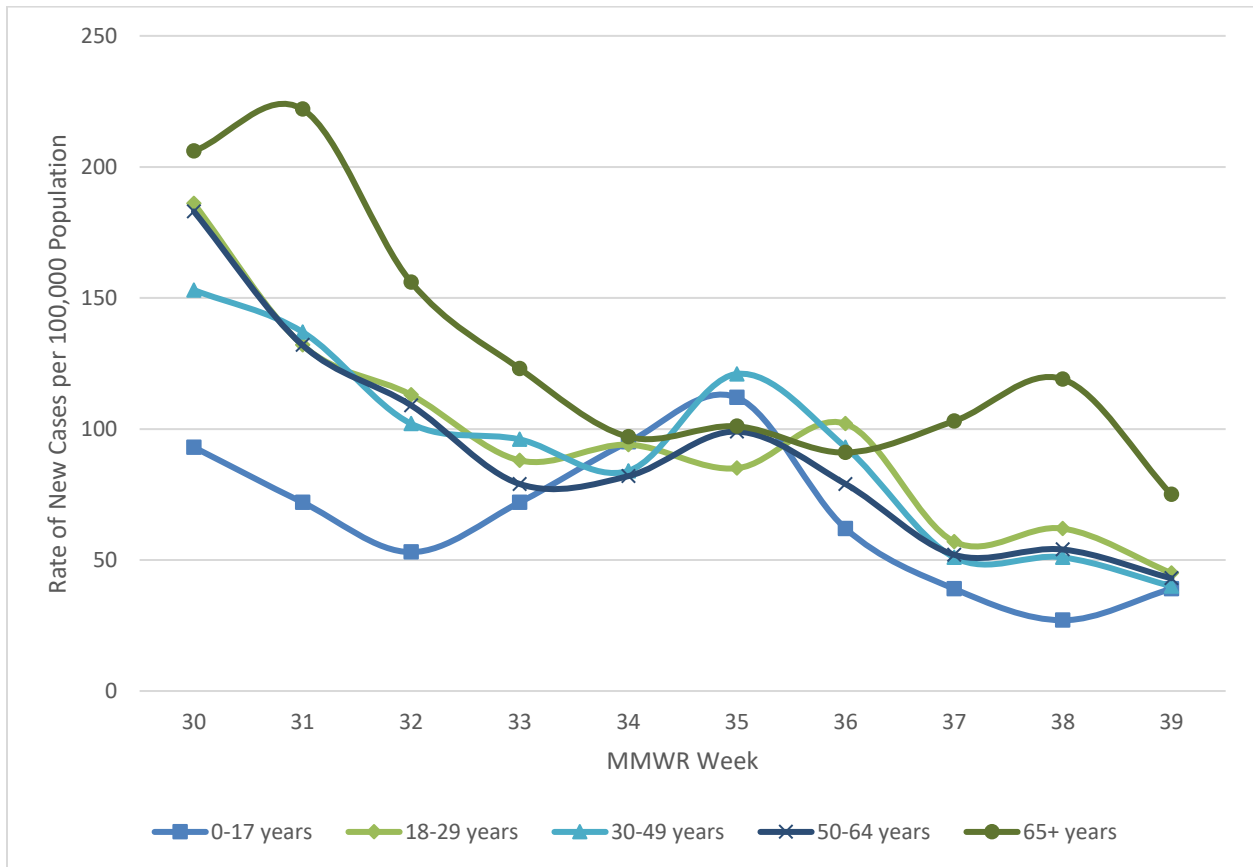
*Data source: <https://data.cdc.gov/Public-Health-Surveillance/United-States-COVID-19-County-Level-of-Community-T/8396-v7yb>, data by date reported

**Data Source: <https://nvhealthresponse.nv.gov/#covid-data-tracker>, data by sample collection date

†Data source: Internal, WCHD, data by date reported

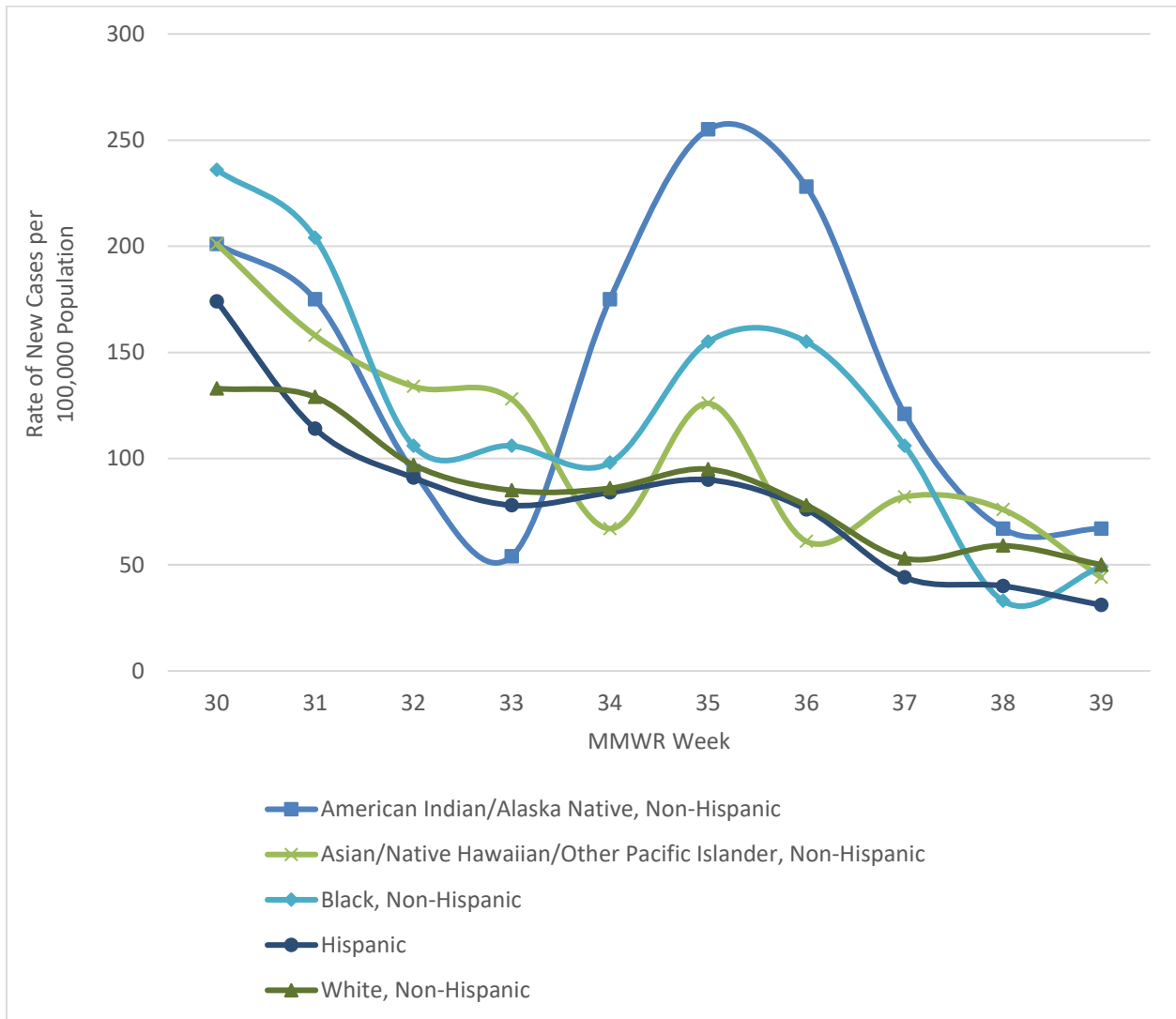
- In Washoe County, case counts decreased from 103 new cases per 100,000 population in MMWR week 35 to 46 new cases per 100,000 population in MMWR week 39. This came after an increase from 88 new cases per 100,000 population in MMWR week 34.
- In Nevada, case counts decreased from 120 new cases per 100,000 population in MMWR week 30 to 30 new cases per 100,000 population in MMWR week 39.
- In the United States, case counts decreased from a ten-week high of 263 new cases per 100,000 population in MMWR week 30 to 116 new cases per 100,000 population in MMWR week 39.

Figure 2. Rate of New Cases Reported by Age Group and MMWR Week, Washoe County, 2022



- The age group with the highest case rate during MMWR week 39 was the 65+ age group with 75 new cases per 100,000 population. This was a decrease from 119 new cases per 100,000 population in MMWR week 38.
- The age group with the lowest case rate during MMWR week 39 was the 0-17 age group with 39 new cases per 100,000 population, which is a decrease from 112 new cases per 100,000 population in MMWR week 35.

Figure 3. Rate of New Cases Reported by Race/Ethnicity* and MMWR Week, Washoe County, 2022



*Note: From MMWR week 30 to MMWR week 39, 4.7% of cases were recorded as “Declined to answer”, “Multiple”, “Other”, or “Unknown” and rates per 100,000 population are unable to be calculated for those categories.

- In MMWR week 39, those who identified as American Indian/Alaska Native, Non-Hispanic had the highest rate of new cases at 67 new cases per 100,000 population, which is a decrease from a ten-week high of 255 new cases per 100,000 in MMWR week 35.
- In MMWR week 39, those who identified as Hispanic had the lowest rate of new cases per 100,000 population at 31 new cases per 100,000 population.

Hospitalizations, ICU Status, & Deaths

COVID-19 hospitalizations are defined as those hospitalized for greater than or equal to 24 hours and have a positive SARS-CoV-2 laboratory test.

COVID-19 deaths are defined as decedents who have had a positive PCR COVID-19 lab report \leq 30 days from death or post-mortem. This includes deaths attributed to COVID-19 related illnesses and, if not specifically listed on death certificate, a positive PCR COVID-19 lab, dependent on the manner of death. See full definition in Glossary/Key Terms at the end of the report.

Table 1. Number and Percent of New Cases Reported by Age and Hospitalization Status, MMWR Weeks* 38 and 39, Washoe County, 2022

| | | | Age Group | | | | |
|-----------|----|----------------|-----------|-------|-------|-------|------|
| | | | 0-17 | 18-29 | 30-49 | 50-64 | 65+ |
| MMWR Week | 38 | Total Cases | 29 | 50 | 62 | 47 | 93 |
| | | % Hospitalized | 3.4% | 0.0% | 0.0% | 0.0% | 4.3% |
| | 39 | Total Cases | 42 | 36 | 49 | 37 | 59 |
| | | % Hospitalized | 0.0% | 0.0% | 2.0% | 0.0% | 3.4% |

* Note: hospitalization totals for each week are subject to change as new reports are received on a daily basis and are often delayed, causing underreporting in more recent MMWR weeks.

- During MMWR week 38 and MMWR week 39, the age group with the highest percentage of total cases resulting in hospitalization were those 65+.

Table 2. Number and Percentage of Cases Reported by Hospitalization and ICU Status by MMWR Week*, Washoe County, 2022

| MMWR Week | New Cases | Hospitalized | | ICU | |
|-----------|-----------|--------------|-----|-----|-----|
| | | # | % | # | % |
| 30 | 757 | 42 | 5.5 | 3 | 0.4 |
| 31 | 641 | 30 | 4.7 | 1 | 0.2 |
| 32 | 490 | 18 | 3.7 | 4 | 0.8 |
| 33 | 431 | 14 | 3.2 | 2 | 0.5 |
| 34 | 428 | 13 | 3.0 | 3 | 0.7 |
| 35 | 502 | 17 | 3.4 | 0 | 0.0 |
| 36 | 403 | 11 | 2.7 | 0 | 0.0 |
| 37 | 276 | 17 | 6.2 | 2 | 0.7 |
| 38 | 281 | 5 | 1.8 | 1 | 0.4 |
| 39 | 223 | 3 | 1.3 | 0 | 0.0 |

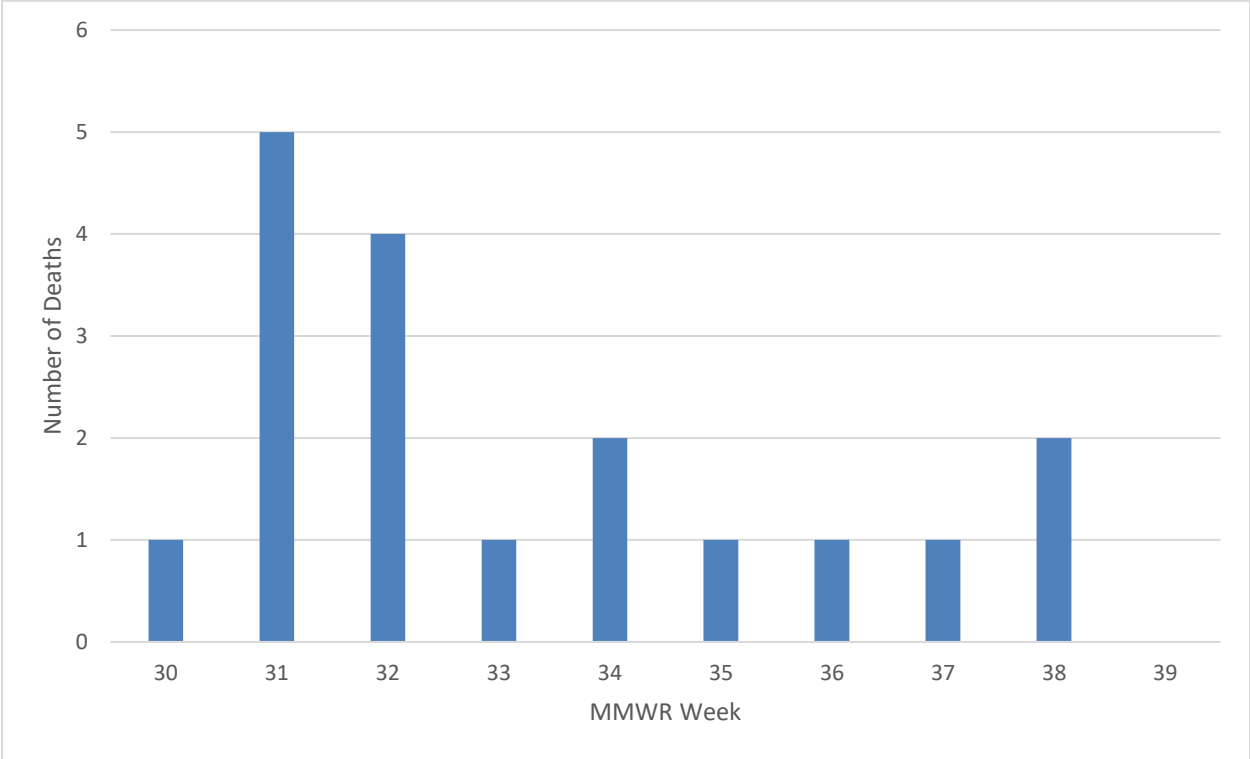
*Note: hospitalization and ICU totals for each week are subject to change as new reports are received on a daily basis and are often delayed, causing underreporting in more recent MMWR weeks.

Table 3. COVID-19 Deaths by Age Group and Time Period* of Death, Washoe County, 2020-2022

| Time Period | Total Deaths | 0-17 years | 18-29 years | 30-49 years | 50-64 years | 65+ years |
|-----------------------|--------------|------------|-------------|-------------|-------------|-----------|
| 2020 March - December | 510 | 1 | 2 | 31 | 85 | 391 |
| 2021 Total | 554 | 1 | 6 | 60 | 125 | 362 |
| 2022 January | 86 | 0 | 1 | 6 | 14 | 65 |
| 2022 February | 62 | 0 | 1 | 5 | 16 | 40 |
| 2022 March | 25 | 0 | 0 | 0 | 2 | 23 |
| 2022 April | 7 | 0 | 0 | 0 | 0 | 7 |
| 2022 May | 6 | 0 | 0 | 2 | 0 | 4 |
| 2022 June | 9 | 0 | 0 | 0 | 2 | 7 |
| 2022 July | 9 | 0 | 0 | 0 | 0 | 9 |
| 2022 August | 13 | 0 | 0 | 0 | 0 | 13 |
| 2022 September | 4 | 0 | 0 | 0 | 1 | 3 |

*Note: death totals are subject to change as new reports are received on a daily basis and are often delayed, causing underreporting in more recent months.

Figure 4. Number of Deaths Occurring by MMWR Week*, Washoe County, 2022



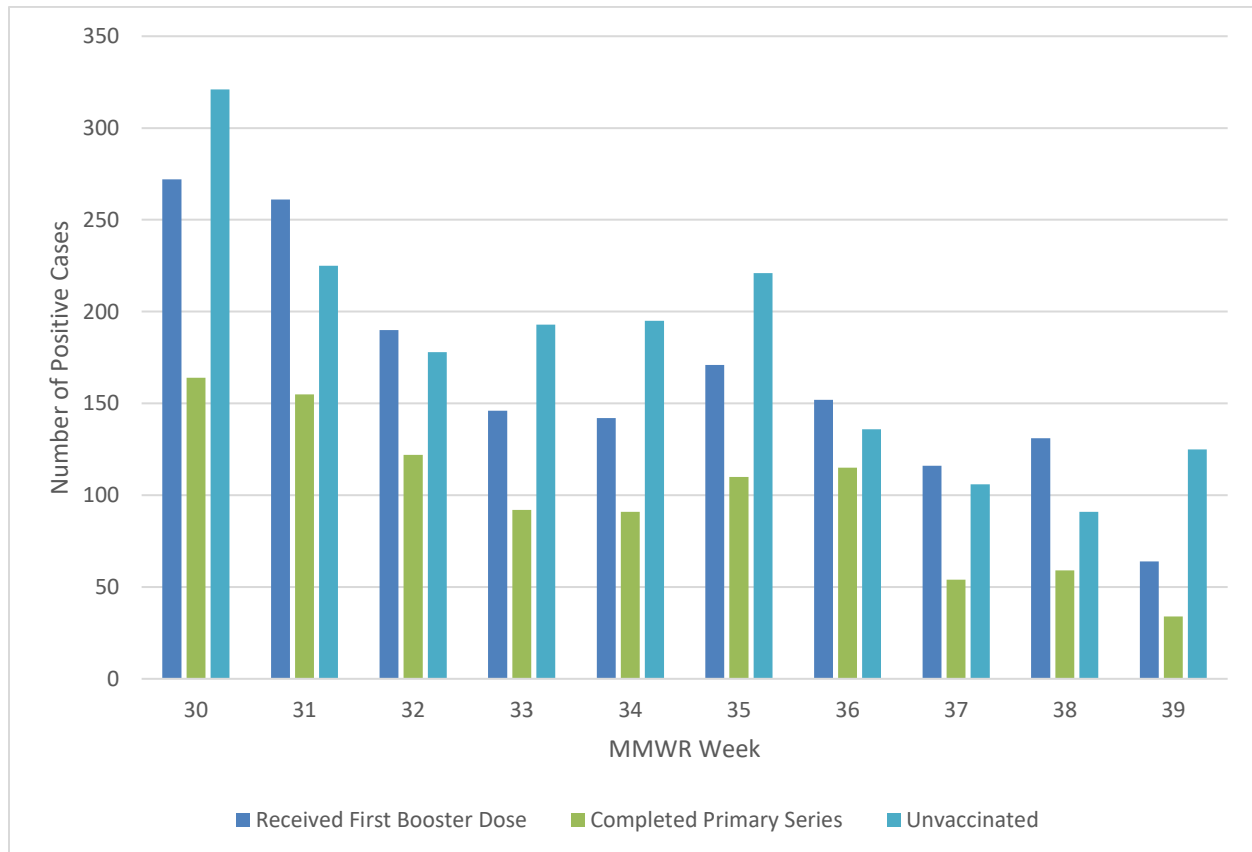
*Note: death totals for each week are subject to change as new reports are received on a daily basis and are often delayed, causing underreporting in more recent MMWR weeks.

- At the time of publication, there have not been any deaths reported to have occurred during MMWR week 39.

Breakthrough Cases

A breakthrough COVID-19 case is defined as a Washoe County resident who has SARS-CoV-2 PCR or antigen detected through laboratory testing 14 or more days after completing the primary series of an FDA-authorized COVID-19 vaccine.

Figure 5. Number of Cases by Vaccination Status and MMWR Week*, Washoe County, 2022



*Note: vaccination data for each week are subject to change as vaccinations are updated on a daily basis and are often on a delay internally, causing underreporting in more recent MMWR weeks.

- During MMWR week 38, 46.6% (n = 131) of new cases received their first booster dose, while 32.4% (n = 91) of new cases were unvaccinated and 21.0% (n = 59) of new cases completed their primary series.
- During MMWR week 39, the unvaccinated group represented 56.1% (n = 125) of newly reported cases, while individuals who received their first booster dose represented 28.7% (n = 64) and individuals who completed their primary series represented 15.2% (n = 34) of newly reported cases.

Table 4. Number and Percentage of Cases Reporting Hospitalization and ICU by Vaccination Status and MMWR Week*, Washoe County, 2022

| All Cases | | | | Unvaccinated Cases | | | | Breakthrough Cases | | | |
|-----------|-----------|--------------------|-----------|--------------------|----------------|-----|----------------|--------------------|----------------|-----|----------------|
| MMWR Week | New Cases | Total Hospitalized | Total ICU | Hospitalized | | ICU | | Hospitalized | | ICU | |
| | | | | # | % ^a | # | % ^b | # | % ^a | # | % ^b |
| 30 | 757 | 42 | 3 | 18 | 42.9 | 1 | 33.3 | 24 | 57.1 | 2 | 66.7 |
| 31 | 641 | 30 | 1 | 17 | 56.7 | 1 | 100.0 | 13 | 43.3 | 0 | 0.0 |
| 32 | 490 | 18 | 4 | 12 | 66.7 | 3 | 75.0 | 6 | 33.3 | 1 | 25.0 |
| 33 | 431 | 14 | 2 | 8 | 57.1 | 0 | 0.0 | 6 | 42.9 | 2 | 100.0 |
| 34 | 428 | 13 | 3 | 8 | 61.5 | 2 | 66.7 | 5 | 38.5 | 1 | 33.3 |
| 35 | 502 | 17 | 0 | 7 | 41.2 | 0 | 0.0 | 10 | 58.8 | 0 | 0.0 |
| 36 | 403 | 11 | 0 | 2 | 18.2 | 0 | 0.0 | 9 | 81.8 | 0 | 0.0 |
| 37 | 276 | 17 | 2 | 11 | 64.7 | 2 | 100.0 | 6 | 35.3 | 0 | 0.0 |
| 38 | 281 | 5 | 1 | 3 | 60.0 | 1 | 100.0 | 2 | 40.0 | 0 | 0.0 |
| 39 | 223 | 3 | 0 | 1 | 33.3 | 0 | 0.0 | 2 | 66.7 | 0 | 0.0 |

*Note: hospitalization and ICU totals for each week are subject to change as new reports are received on a daily basis and are often delayed, causing underreporting in more recent MMWR weeks.

^a Calculated as the percentage of Total Hospitalizations by vaccination status for the MMWR week.

^b Calculated as the percentage of Total ICU by vaccination status for the MMWR week.

Vaccinations

Current dose and vaccination totals and percentages for Washoe County residents; data as of 10/3/2022.

168,484 doses reported as administered per 100,000 population (to date)

70,976 (71.0% of population) vaccinations reported as initiated per 100,000 population

62,861 (62.9% of population) vaccinations reported as completed primary series per 100,000 population

77.3% of population 5 years and older initiated vaccination

68.5% of population 5 years and older completed primary series of vaccination

Figure 6. Percent of the Population with a Completed Primary Series and Population with a Completed Primary Series that has Received a First Booster Dose, Washoe County, 2022

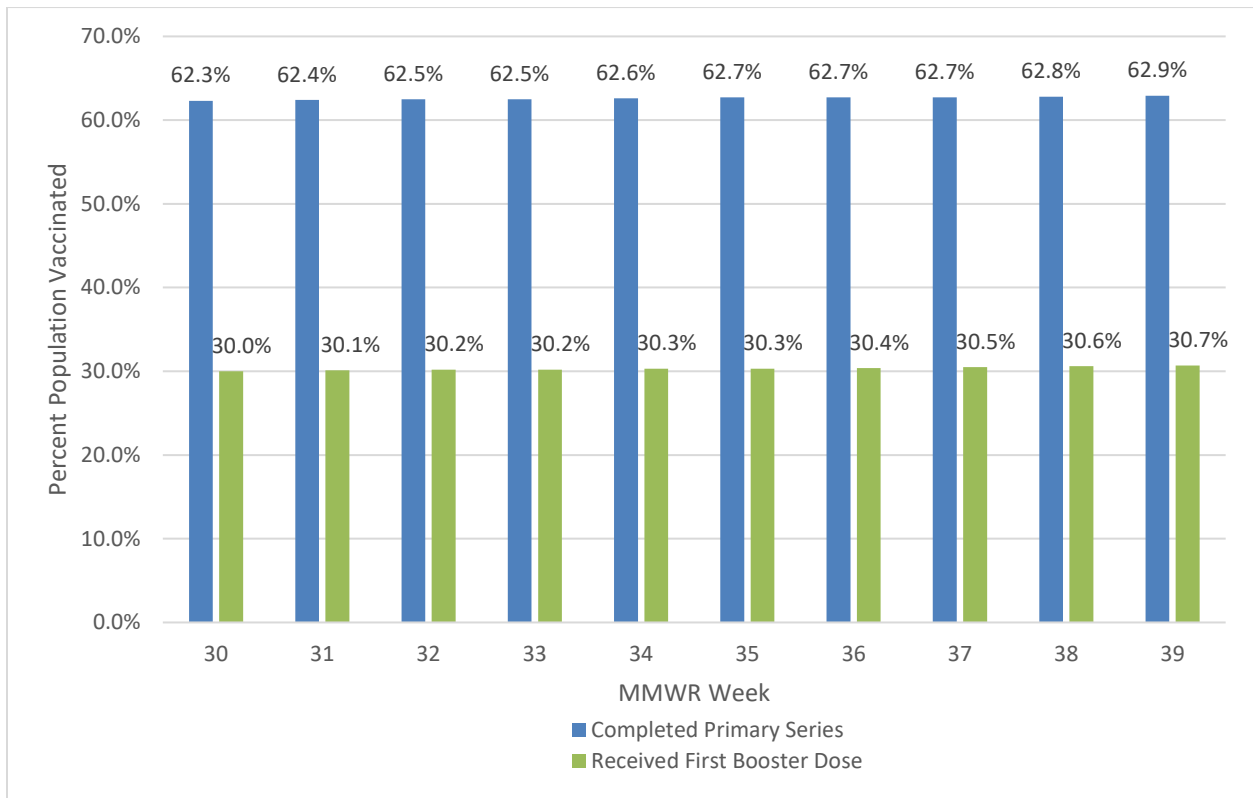


Table 5. Percentage of Population with a Completed Primary Series by Sex, Age Group, and Race/Ethnicity*, Washoe County, 2021-2022

| Select Demographics | | % Population with a Completed Primary Series |
|---------------------|--|--|
| Sex | Female | 67.7% |
| | Male | 61.5% |
| Age Group | 0-17 years | 31.2% |
| | 18-29 years | 64.7% |
| | 30-49 years | 68.4% |
| | 50-64 years | 80.4% |
| | 65+ years | 87.3% |
| Race / Ethnicity* | American Indian/Alaska Native, Non-Hispanic** | 35.4% |
| | Asian/Native Hawaiian/Other Pacific Islander, Non-Hispanic | 46.8% |
| | Black, Non-Hispanic | 38.8% |
| | Hispanic | 50.6% |
| | White, Non-Hispanic | 50.2% |

*Note: 23.4% of the total vaccinated population were recorded as “Unknown” or “Other” and therefore population percentages are unable to be calculated for those categories. Additionally, 2.5% of the total Washoe County population had missing demographic information and therefore were not included in the overall calculations.

**Note: Tribal populations may be underrepresented as the data source does not include Indian Health Services (IHS) data, which may contain vaccination records for tribal members and those who access services through IHS clinics.

- In Washoe County, the age group with the highest vaccination rates are those 65+ years (87.3%), followed by the 50-64 age group (80.4%).
- In Washoe County, those who identify as Hispanic have the highest percent vaccinated (50.6%), followed closely by White, Non-Hispanic (50.2%) and Asian/Native Hawaiian/Other Pacific Islander, Non-Hispanic (46.8%).

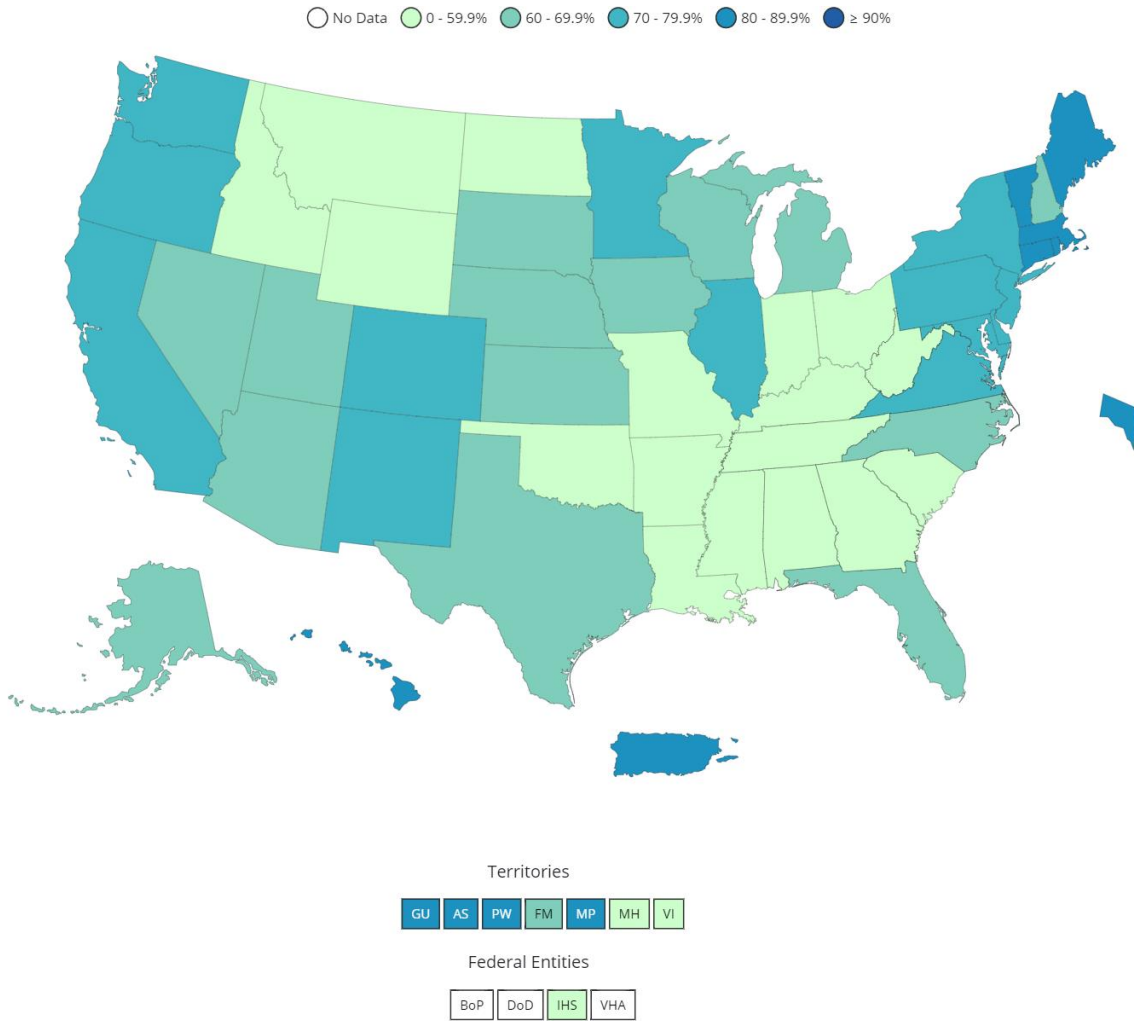
Table 6. Percentage of Total Population with a Completed Primary Series and those that have Received a First Booster Dose by Washoe County, Nevada, and the United States, 2021-2022

| | % Population with a Completed Primary Series | % Population that has Received a First Booster Dose |
|-----------------|--|---|
| United States* | 68.0 | 33.3 |
| Nevada* | 62.4 | 25.8 |
| Washoe County** | 62.9 | 30.7 |

* Data Source: https://covid.cdc.gov/covid-data-tracker/#vaccinations_vacc-people-fully-percent-total as of 10/5/2022.

** Data Source: WebIZ as of 10/3/2022.

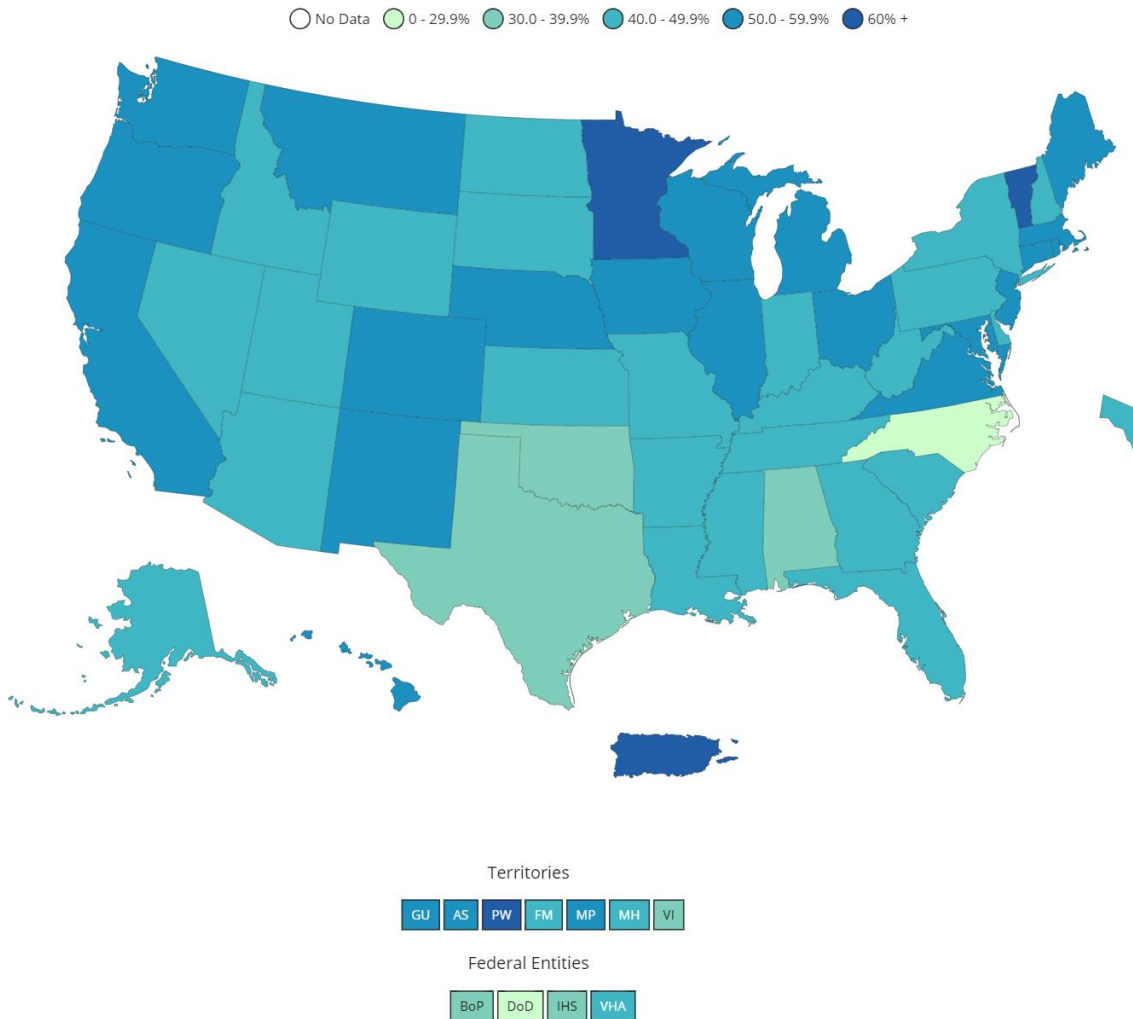
Figure 7. Percent of the Total Population with a Completed Primary Series Reported to CDC by Jurisdictions and Select Federal Entities



Data for Federal Entities are presented here and are also incorporated into the respective jurisdictional totals

Data source for U.S. map for people with a completed primary series reported to the CDC, data as of 10/5/2022 6:00 AM ET. Posted: October 6, 2022, CDC COVID Data Tracker https://covid.cdc.gov/covid-data-tracker/#vaccinations_vacc-people-fully-percent-total

Figure 8. Percent of the Total Population with a Completed Primary Series that has Received a First Booster Dose Reported to CDC by Jurisdictions and Select Federal Entities



Data for Federal Entities are presented here and are also incorporated into the respective jurisdictional totals

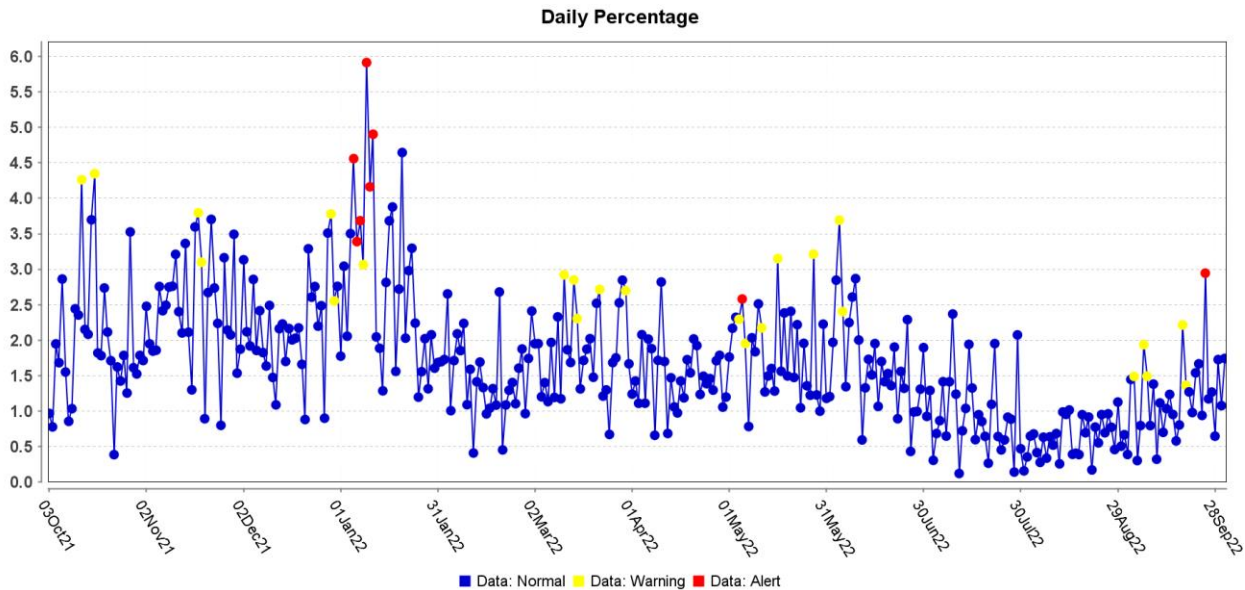
Data source for U.S. map for people with a completed primary series that have received a first booster dose reported to the CDC, data as of 10/5/2022 6:00 AM ET. Posted: October 6, 2022, CDC COVID Data Tracker https://covid.cdc.gov/covid-data-tracker/#vaccinations_vacc-people-additional-dose-totalpop

Note: Percent of total population with a completed primary series that has received a first booster dose is a different metric than percentage of total population who received a first booster dose provided in Table 6.

Surveillance Data

Percentage of persons indicating COVID-19 as the reason for visit to the Emergency Room (ER) is presented in Figure 9. The overlay below depicts COVID-19 in blue. Alerts appear as yellow and/or red dots. They indicate an unusually high percentage of COVID-19 visits according to ESSENCE algorithms.

Figure 9. Percentage of ER Visits Due to COVID in the Last Year, Washoe County



Data source: ESSENCE

Glossary/Key Terms

COVID-19 Case

Coronavirus Disease 2019 (COVID-19) cases counted in this document are confirmed or probable cases as determined by meeting confirmatory laboratory evidence, clinical criteria, and/or epidemiologic linkage as defined on the CDC website here:

<https://ndc.services.cdc.gov/case-definitions/coronavirus-disease-2019-2021/>

COVID-19 Hospitalization

COVID-19 hospitalizations are counted as those hospitalized for greater than or equal to 24 hours and have a positive SARS-CoV-2 laboratory test.

COVID-19 Death

As of January 1, 2022, both Confirmed and Probable COVID-19-associated deaths are included in the count.

- (https://cdn.ymaws.com/www.cste.org/resource/resmgr/pdfs/pdfs2/20211222_interim-guidance.pdf)

Criteria for confirmed case death:

- The case meets the confirmed COVID-19 surveillance case definition, AND at least ONE of the following criteria is met:

- A case investigation determined that COVID-19 was the cause of death or contributed to the death.
- The death certificate indicates COVID-19 or an equivalent term as one of the causes of death, regardless of the time elapsed since specimen collection of the confirmatory laboratory test used to define the case.
- The death occurred within (and including) 30 days of specimen collection for the confirmatory laboratory test used to define the case and was due to natural causes (e.g., the Manner of Death is coded as “natural” on the death certificate.)

Criteria for probable case death:

- The case meets the probable COVID-19 case definition AND a case investigation determined that COVID-19 was the cause of death or contributed to the death; **OR**
- The case meets the probable COVID-19 surveillance case definition based on presumptive laboratory evidence AND death occurred within (and including) 30 days of specimen collection and was due to natural causes (e.g., the Manner of Death is coded as “natural” on the death certificate.); **OR**
- The case meets the probable COVID-19 surveillance case definition based on epidemiologic linkage and meeting clinical criteria, AND death occurred within (and including) 30 days of symptom onset and was due to natural causes (e.g., the Manner of Death is coded as “natural” on the death certificate.); **OR**
- The case meets the probable COVID-19 surveillance case definition based only on vital records criteria (i.e., a death certificate that lists COVID-19 disease or SARS-CoV-2 or an equivalent term as an underlying cause of death or a significant condition contributing to death and there is no confirmatory or presumptive laboratory evidence.)

Links

WCHD COVID Dashboard

<https://washoe.maps.arcgis.com/apps/dashboards/0db36fa8fa9c47758bc38210e4c23818>

WCHD website for COVID information and vaccine appointments

<https://covid19washoe.com/>

CDC COVID Data Tracker <https://covid.cdc.gov/covid-data-tracker/>

Nevada State Public Health Laboratory created a new COVID-19 variant web page

<https://www.nvsarscov2variant.com/variants>

Department of Health and Human Services Nevada Division of Public and Behavioral Health (DPBH) Technical Bulletins

https://dphh.nv.gov/Resources/Technical_Bulletins-New/

WCHD COVID reports <https://covid19washoe.com/daily-updates/washoe-county-covid-19-data-report/>