

COVID-19 Epidemiology Surveillance Program
MMWR Week #6 – 7, Feb. 5, 2023 – Feb. 18, 2023

Division of Epidemiology & Public Health Preparedness (EHPH) 775-328-2447

Adam Vazquez, MPH, COVID-19 Epidemiologist AVazquez@washoecounty.gov

Lissa Callahan, COVID-19 Statistician LCallahan@washoecounty.gov

Weekly Summary*

Metrics	MMWR Week 6	MMWR Week 7
Number of New Cases	241	300
New Cases per 100,000 Population	49	60
Number of New Breakthrough Cases	216	269
Hospitalizations**	13	19
Deaths**	1	0

- Completed Primary Series of Vaccination Total through 2/20/2023: 313,334 persons

*For definition and specifics on metrics summarized, please refer to corresponding sections.

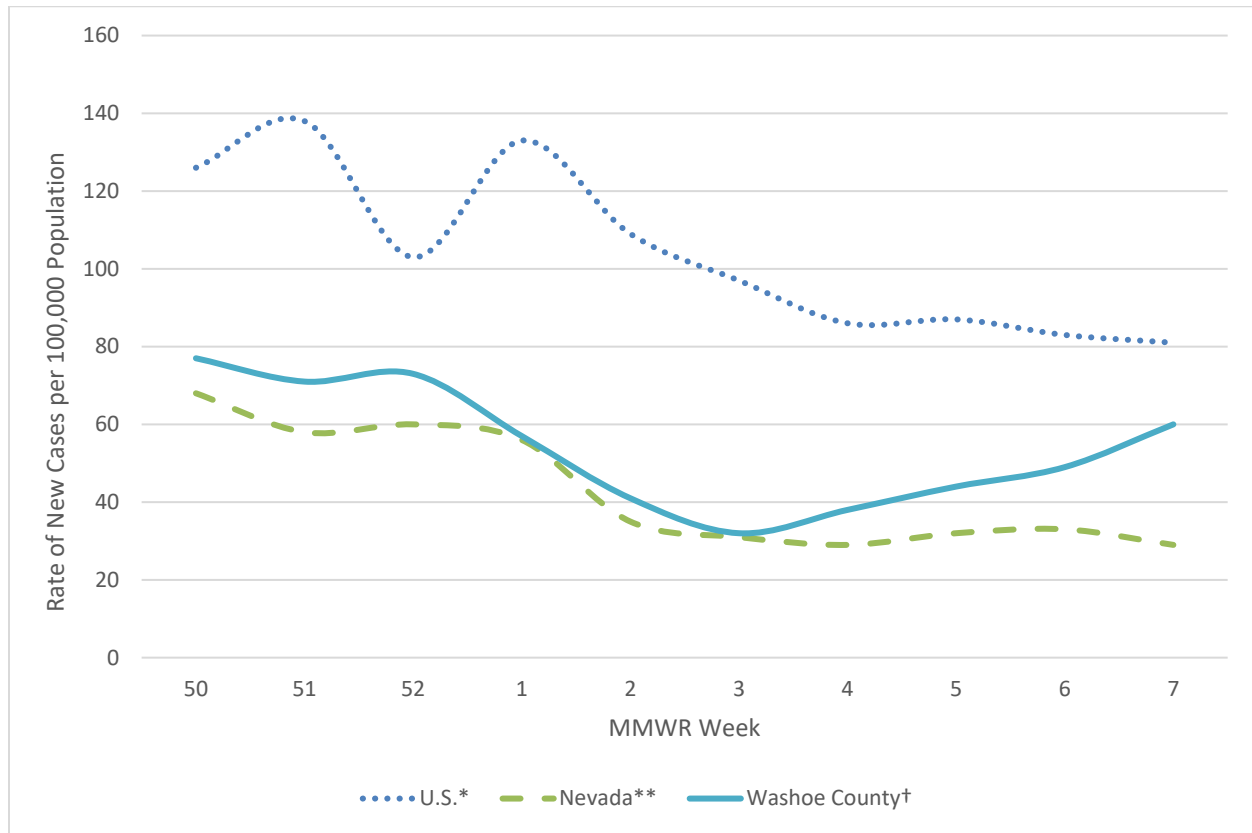
**Note: hospitalization and death totals for each week are subject to change as new reports are received on a daily basis and are often delayed, causing underreporting in more recent MMWR weeks.

Key message(s)

- The number of cases reported in Washoe County increased from 32 new cases per 100,000 population in MMWR week 3 to 60 new cases per 100,000 population in MMWR week 7.
- Only 32.2% of Washoe County’s population has received a booster dose.
- Only 12.9% of Washoe County’s population has received an updated (bivalent) booster dose.

COVID-19 Case Information

Figure 1. Rate of New Cases Reported by MMWR Week, Washoe County, Nevada, and the United States, 2022-2023



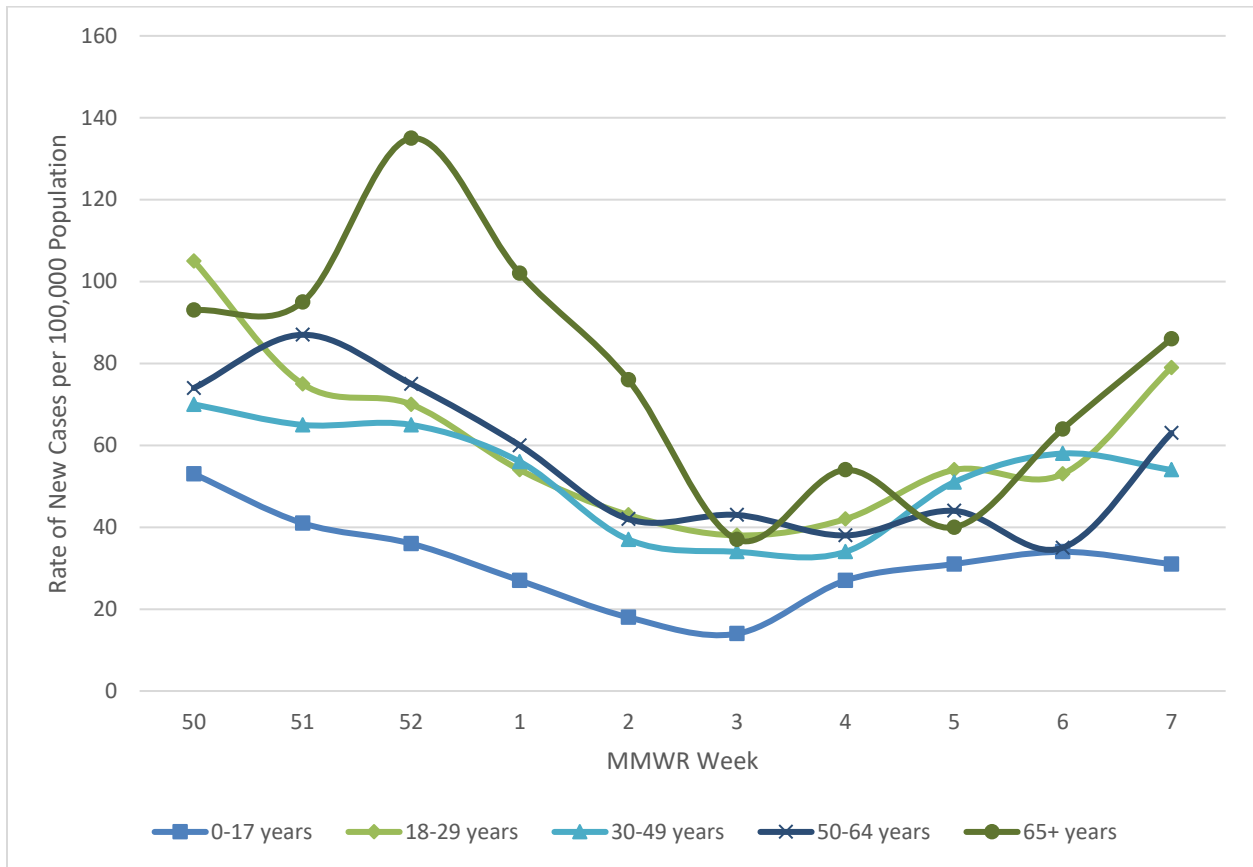
*Data source: <https://data.cdc.gov/Public-Health-Surveillance/United-States-COVID-19-County-Level-of-Community-T/8396-v7yb>, and <https://data.cdc.gov/Public-Health-Surveillance/Weekly-COVID-19-County-Level-of-Community-Transmis/dt66-w6m6>, data by date reported. Week 6 data are from 2/3/2023 – 2/9/2023. Week 7 data are from 2/10/2023 – 2/16/2023.

**Data Source: <https://nvhealthresponse.nv.gov/#covid-data-tracker>, data by sample collection date.

†Data source: Internal, WCHD, data by date reported.

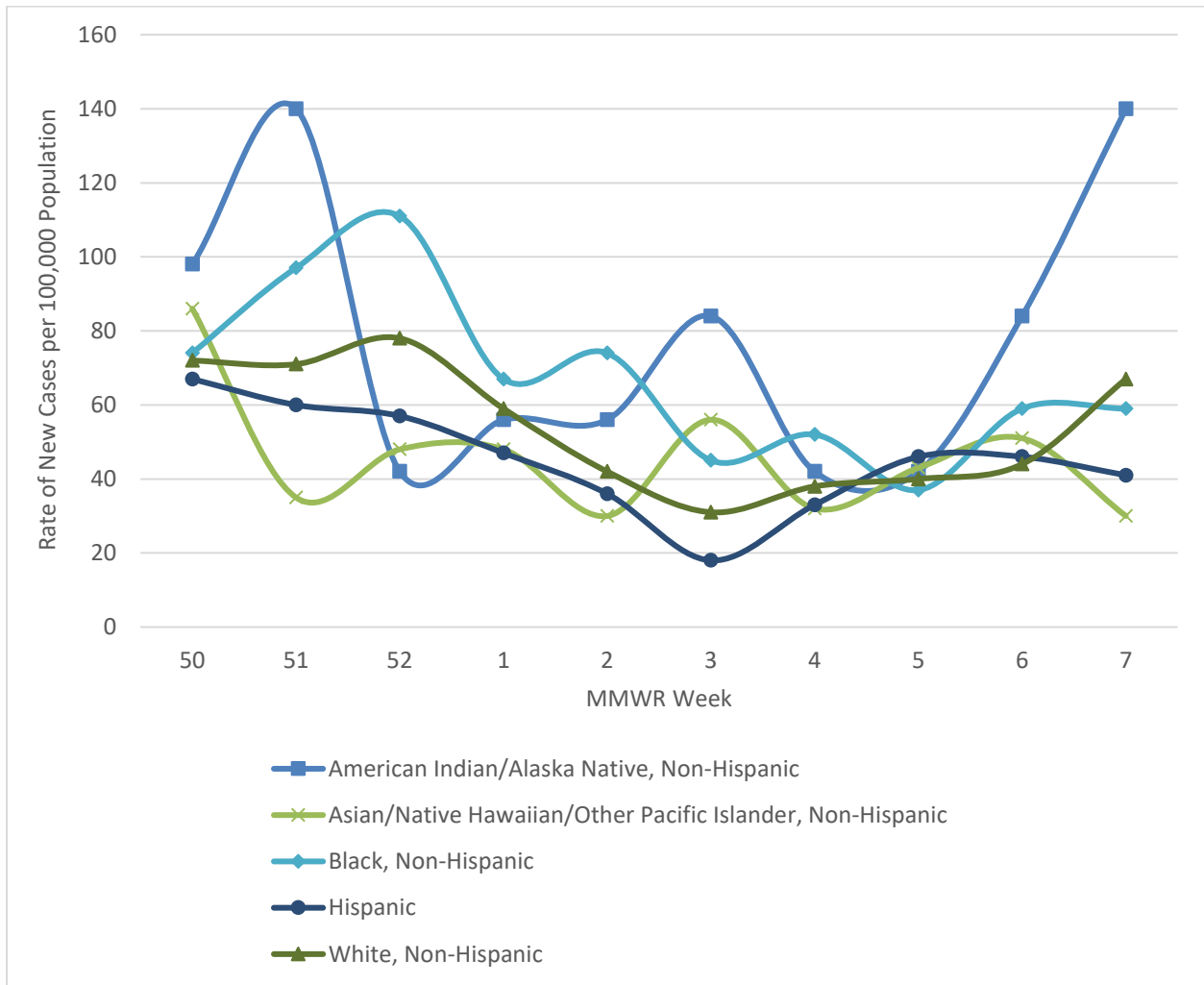
- In Washoe County, case counts increased from 32 new cases per 100,000 population in MMWR week 3 to 49 and 60 new cases per 100,000 population in MMWR weeks 6 and 7, respectively.
- In Nevada, case counts decreased to 29 new cases per 100,000 population in MMWR week 7 from a ten-week high of 68 new cases per 100,000 population in MMWR week 50.
- In the United States, case counts decreased from 133 new cases per 100,000 population in MMWR week 1 to 83 and 81 new cases per 100,000 population in MMWR weeks 6 and 7, respectively.

Figure 2. Rate of New Cases Reported by Age Group and MMWR Week, Washoe County, 2022-2023



- The age group with the highest case rate during MMWR week 7 was the 65+ age group with 86 new cases per 100,000 population. This was an increase from a ten-week low of 37 new cases per 100,000 population in MMWR week 3.
- The age group with the lowest case rate during MMWR week 7 was the 0-17 age group with 31 new cases per 100,000 population. This was an increase from 14 new cases per 100,000 population in MMWR week 3.

Figure 3. Rate of New Cases Reported by Race/Ethnicity* and MMWR Week, Washoe County, 2022-2023



*Note: From MMWR week 50 to MMWR week 7, 4.4% of cases were recorded as “Declined to answer”, “Multiple”, “Other”, or “Unknown” and rates per 100,000 population are unable to be calculated for those categories.

- In MMWR week 7, those who identified as American Indian/Alaska Native, Non-Hispanic had the highest rate of new cases at 140 new cases per 100,000 population. This was an increase from 42 new cases per 100,000 population in MMWR week 5.
- In MMWR week 7, those who identified as Asian/Native Hawaiian/Other Pacific Islander, Non-Hispanic had the lowest rate of new cases per 100,000 population with 30 new cases per 100,000 population.

Hospitalizations, ICU Status, & Deaths

COVID-19 hospitalizations are defined as those hospitalized for greater than or equal to 24 hours and have a positive SARS-CoV-2 laboratory test.

COVID-19 deaths are defined as decedents who have had a positive PCR COVID-19 lab report \leq 30 days from death or post-mortem. This includes deaths attributed to COVID-19 related illnesses and, if not specifically listed on death certificate, a positive PCR COVID-19 lab, dependent on the manner of death. See full definition in Glossary/Key Terms at the end of the report.

Table 1. Number and Percent of New Cases Reported by Age and Hospitalization Status, MMWR Weeks* 6 and 7, Washoe County, 2023

			Age Group				
			0-17	18-29	30-49	50-64	65+
MMWR Week	6	Total Cases	37	47	73	32	52
		% Hospitalized	0.0%	4.3%	1.4%	9.4%	13.5%
	7	Total Cases	34	70	69	57	70
		% Hospitalized	8.8%	0.0%	1.4%	1.8%	20.0%

*Note: hospitalization totals for each week are subject to change as new reports are received on a daily basis and are often delayed, causing underreporting in more recent MMWR weeks.

- During MMWR weeks 6 and 7, the age group with the highest percentage of total cases resulting in hospitalization were those 65+ years old.

Table 2. Number and Percentage of Cases Reported by Hospitalization and ICU Status by MMWR Week*, Washoe County, 2022-2023

MMWR Week	New Cases	Hospitalized		ICU	
		#	%	#	%
50	382	25	6.5	2	0.5
51	351	32	9.1	6	1.7
52	361	28	7.8	1	0.3
1	285	21	7.4	3	1.1
2	205	19	9.3	1	0.5
3	161	10	6.2	1	0.6
4	187	10	5.3	1	0.5
5	220	16	7.3	0	0.0
6	241	13	5.4	1	0.4
7	300	19	6.3	1	0.3

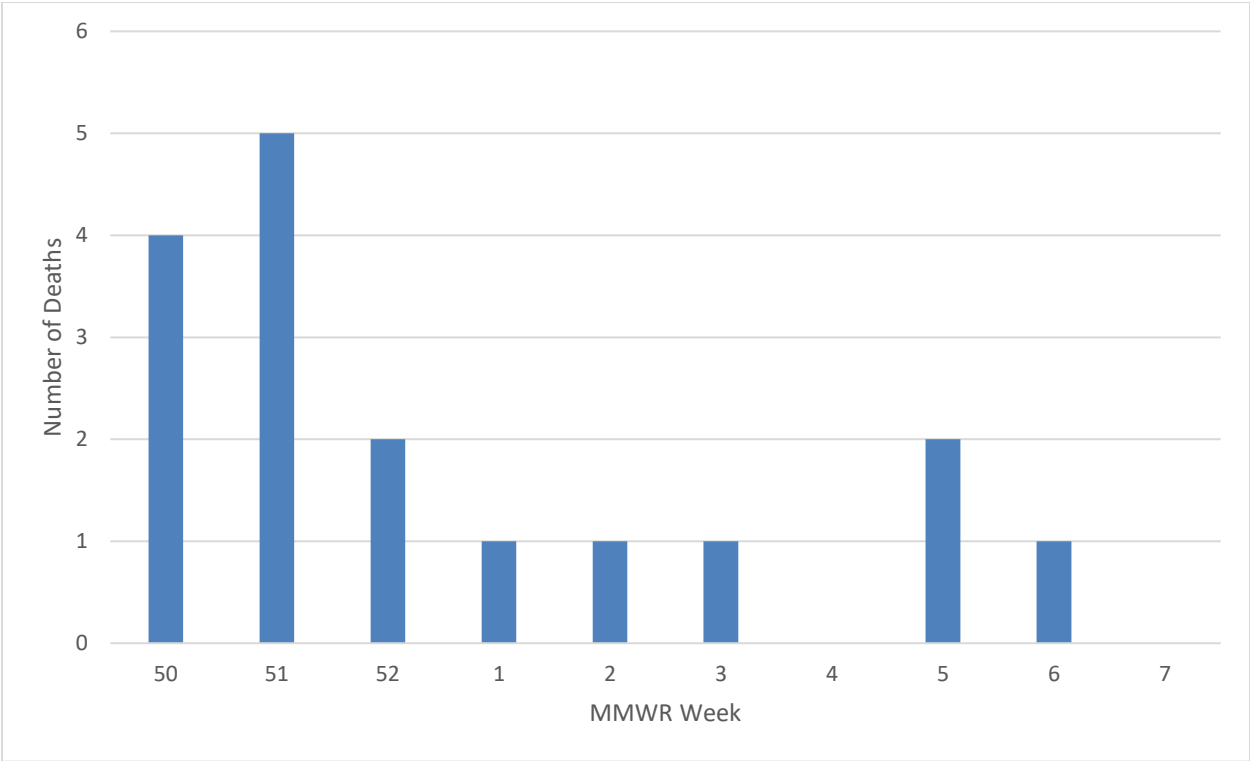
*Note: hospitalization and ICU totals for each week are subject to change as new reports are received on a daily basis and are often delayed, causing underreporting in more recent MMWR weeks.

Table 3. COVID-19 Deaths by Age Group and Time Period* of Death, Washoe County, 2020-2023

Time Period	Total Deaths	0-17 years	18-29 years	30-49 years	50-64 years	65+ years
2020 March - December	510	1	2	31	85	391
2021 Total	560	1	6	60	127	366
2022 Total	246	0	2	14	36	194
2023 January	4	0	0	0	0	4

*Note: death totals are subject to change as new reports are received on a daily basis and are often delayed, causing underreporting in more recent months.

Figure 4. Number of Deaths Occurring by MMWR Week*, Washoe County, 2022-2023



*Note: death totals for each week are subject to change as new reports are received on a daily basis and are often delayed, causing underreporting in more recent MMWR weeks.

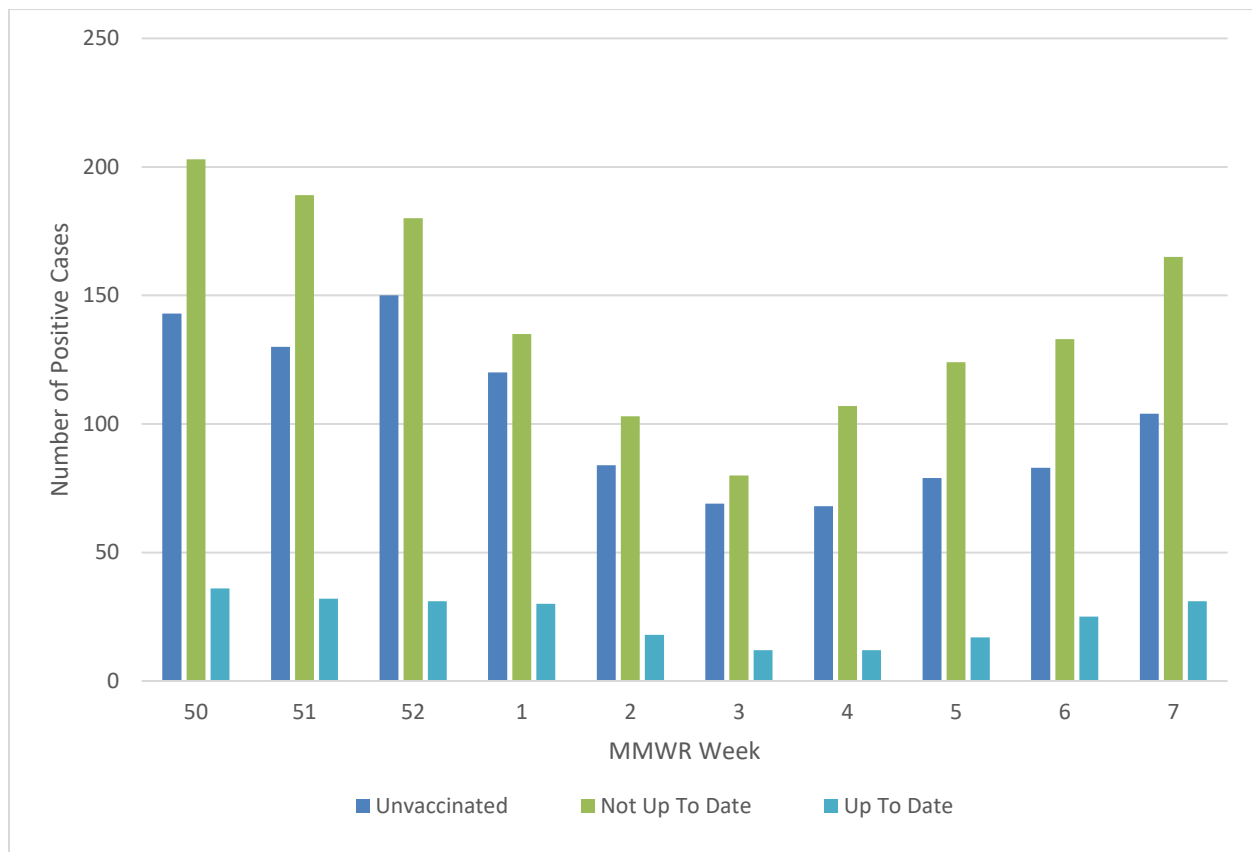
- At the time of publication, there have not been any deaths reported to have occurred during MMWR weeks 4 and 7.

Breakthrough Cases

A breakthrough COVID-19 case is defined as a Washoe County resident who has SARS-CoV-2 PCR or antigen detected through laboratory testing 14 or more days after completing the primary series of an FDA-authorized COVID-19 vaccine, regardless of any additional vaccine doses.

Please see the CDC's webpage on staying up to date for what qualifies as "up to date": <https://www.cdc.gov/coronavirus/2019-ncov/vaccines/stay-up-to-date.html>.

Figure 5. Number of Cases by Vaccination Status and MMWR Week*, Washoe County, 2022-2023



*Note: vaccination data for each week are subject to change as vaccinations are updated on a daily basis and are often on a delay internally, causing underreporting in more recent MMWR weeks.

- During MMWR week 6, 34.4% (n = 83) of new cases were unvaccinated and 55.2% (n = 133) of new cases were not up to date on their vaccination, while 10.4% (n = 25) of new cases were up to date on their vaccination.
- During MMWR week 7, 34.7% (n = 104) of new cases were unvaccinated and 55.0% (n = 165) of new cases were not up to date on their vaccination, while 10.3% (n = 31) of new cases were up to date on their vaccination.

Table 4. Number and Percentage of Cases Reporting Hospitalization and ICU by Vaccination Status and MMWR Week*, Washoe County, 2022-2023

All Cases				Unvaccinated Cases				Breakthrough Cases			
MMWR Week	New Cases	Total Hospitalized	Total ICU	Hospitalized		ICU		Hospitalized		ICU	
				#	% ^a	#	% ^b	#	% ^a	#	% ^b
50	382	25	2	14	56.0	2	100.0	11	44.0	0	0.0
51	351	32	6	16	50.0	4	66.7	16	50.0	2	33.3
52	361	28	1	12	42.9	0	0.0	16	57.1	1	100.0
1	285	21	3	6	28.6	0	0.0	15	71.4	3	100.0
2	205	19	1	9	47.4	0	0.0	10	52.6	1	100.0
3	161	10	1	4	40.0	1	100.0	6	60.0	0	0.0
4	187	10	1	4	40.0	1	100.0	6	60.0	0	0.0
5	220	16	0	6	37.5	0	0.0	10	62.5	0	0.0
6	241	13	1	5	38.5	0	0.0	8	61.5	1	100.0
7	300	19	1	8	42.1	0	0.0	11	57.9	1	100.0

*Note: hospitalization and ICU totals for each week are subject to change as new reports are received on a daily basis and are often delayed, causing underreporting in more recent MMWR weeks.

^a Calculated as the percentage of Total Hospitalizations by vaccination status for the MMWR week.

^b Calculated as the percentage of Total ICU by vaccination status for the MMWR week.

Vaccinations

Current dose and vaccination totals and percentages for Washoe County residents; data as of 2/21/2023.

175,865 doses reported as administered per 100,000 population (to date)

71,471 (71.5% of population) vaccinations reported as initiated per 100,000 population

63,158 (63.2% of population) vaccinations reported as completed primary series per 100,000 population

75.3% of population 5 years and older initiated vaccination

63.3% of population 5 years and older completed primary series of vaccination

Figure 6. Percent of the Population with a Completed Primary Series and Population with a Completed Primary Series that has Received a Booster Dose, Washoe County, 2022-2023

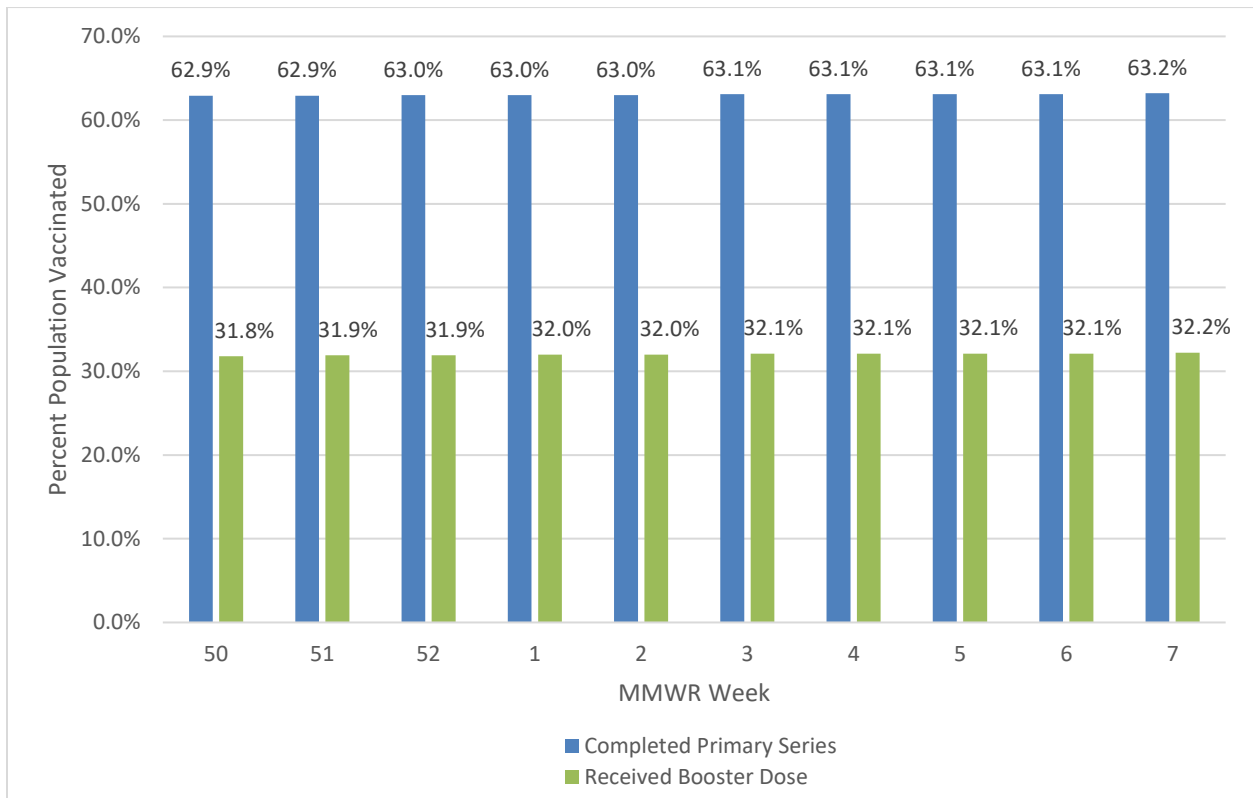


Table 5. Percentage of Population with a Completed Primary Series and Percentage of Population that has Received a Booster Dose by Sex, Age Group, and Race/Ethnicity*, Washoe County, 2021-2023

Select Demographics		% Population with a Completed Primary Series	% Population with a Booster Dose
Sex	Female	65.6%	35.8%
	Male	60.6%	30.0%
Age Group	0-17 years	32.3%	10.0%
	18-29 years	59.4%	19.6%
	30-49 years	67.1%	31.2%
	50-64 years	78.6%	47.8%
	65+ years	85.2%	64.0%
Race / Ethnicity*	American Indian/Alaska Native, Non-Hispanic**	37.4%	22.1%
	Asian/Native Hawaiian/Other Pacific Islander, Non-Hispanic	43.0%	24.1%
	Black, Non-Hispanic	35.8%	15.0%
	Hispanic	48.4%	18.4%
	White, Non-Hispanic	49.1%	26.6%

*Note: 24.1% of the total vaccinated population were recorded as “Unknown” or “Other” and therefore population percentages are unable to be calculated for those categories.

**Note: Tribal populations may be underrepresented as the data source does not include Indian Health Services (IHS) data, which may contain vaccination records for tribal members and those who access services through IHS clinics.

- In Washoe County, the age group with the highest vaccination rates are those 65+ years, with 85.2% of the population having completed their primary series and 64.0% of the population having received a booster dose.
- Those who identify as White, Non-Hispanic have the highest vaccination rates with 49.1% of the population having completed their primary series and 26.6% of the population having received a booster dose.

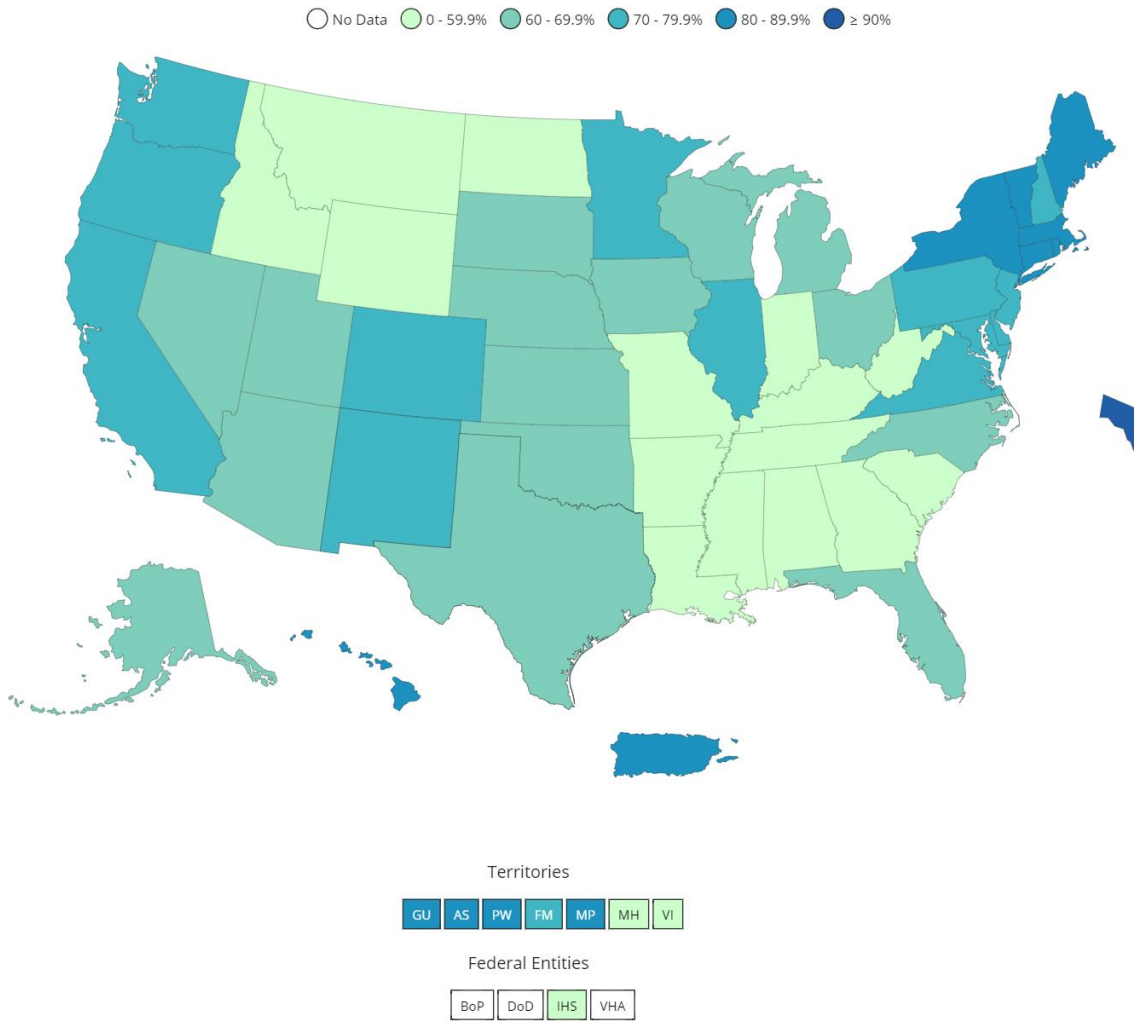
Table 6. Percentage of Total Population with a Completed Primary Series and those that have Received an Updated (Bivalent) Booster Dose in Washoe County, Nevada, and the United States, 2021-2023

	% Population with a Completed Primary Series	% Population with an Updated (Bivalent) Booster Dose
United States*	69.3%	16.1%
Nevada*	63.7%	12.3%
Washoe County**	63.2%	12.9%

* Data Source: https://covid.cdc.gov/covid-data-tracker/#vaccinations_vacc-people-fully-percent-total as of 2/23/2023.

** Data Source: WebIZ as of 2/21/2023.

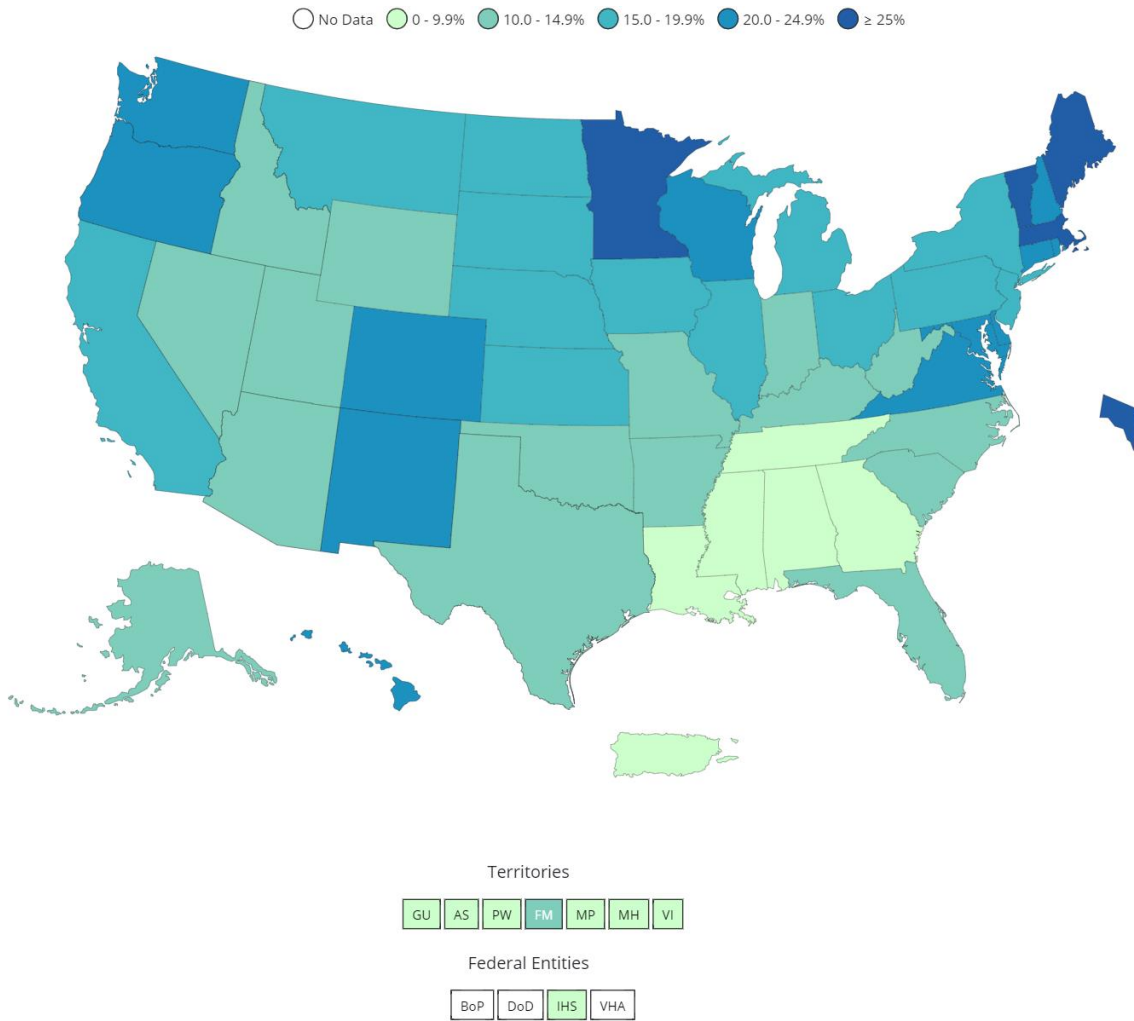
Figure 7. Percent of the Total Population with a Completed Primary Series Reported to CDC by Jurisdictions and Select Federal Entities



Data for Federal Entities are presented here and are also incorporated into the respective jurisdictional totals

Data source for U.S. map for people with a completed primary series reported to the CDC, data as of 2/23/2023 6:00 AM ET. Posted: February 24, 2023, CDC COVID Data Tracker https://covid.cdc.gov/covid-data-tracker/#vaccinations_vacc-people-fully-percent-total

Figure 8. Percent of the Total Population with an Updated (Bivalent) Booster Dose Reported to CDC by Jurisdictions and Select Federal Entities



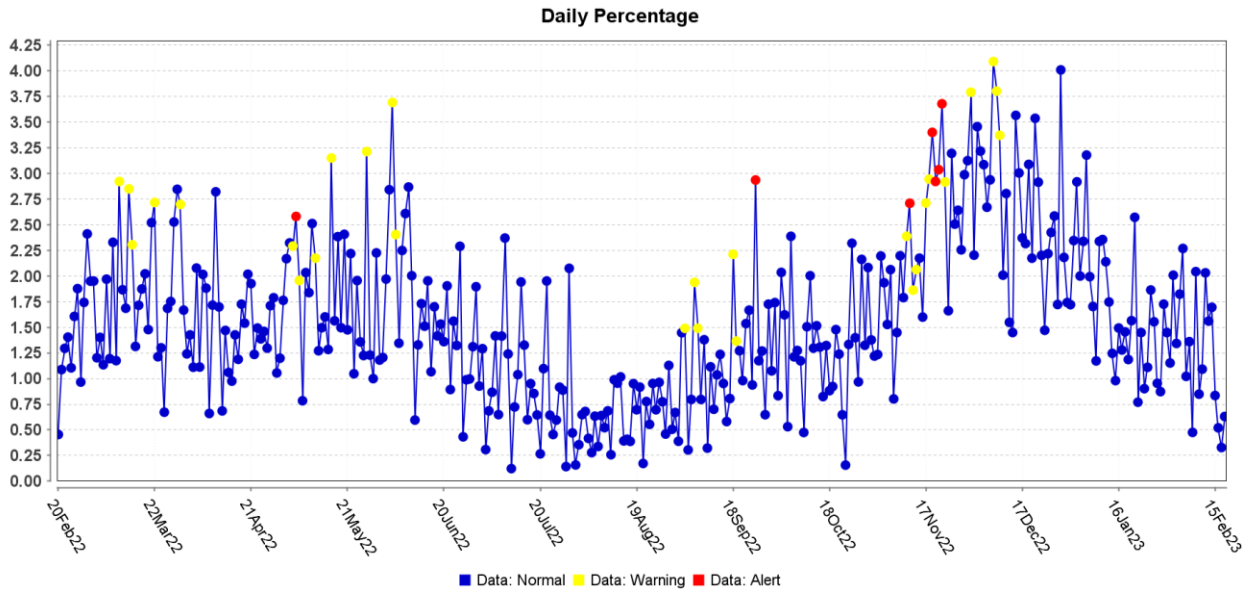
Data for Federal Entities are presented here and are also incorporated into the respective jurisdictional totals

Data source for U.S. map for people 5 years of age and older with an updated (bivalent) booster dose reported to the CDC, data as of 2/23/2023 6:00 AM ET. Posted: February 24, 2023, CDC COVID Data Tracker https://covid.cdc.gov/covid-data-tracker/#vaccinations_vacc-people-booster-percent-total

Surveillance Data

Percentage of persons indicating COVID-19 as the reason for visit to the Emergency Room (ER) is presented in Figure 9. The overlay below depicts COVID-19 in blue. Alerts appear as yellow and/or red dots. They indicate an unusually high percentage of COVID-19 visits according to ESSENCE algorithms.

Figure 9. Percentage of ER Visits Due to COVID in the Last Year, Washoe County



Data source: ESSENCE

Glossary/Key Terms

COVID-19 Case

Coronavirus Disease 2019 (COVID-19) cases counted in this document are confirmed or probable cases as determined by meeting confirmatory laboratory evidence, clinical criteria, and/or epidemiologic linkage as defined on the CDC website here:

<https://ndc.services.cdc.gov/case-definitions/coronavirus-disease-2019-2021/>

COVID-19 Hospitalization

COVID-19 hospitalizations are counted as those hospitalized for greater than or equal to 24 hours and have a positive SARS-CoV-2 laboratory test.

COVID-19 Death

As of January 1, 2022, both Confirmed and Probable COVID-19-associated deaths are included in the count.

- (https://cdn.ymaws.com/www.cste.org/resource/resmgr/pdfs/pdfs2/20211222_interim-guidance.pdf)

Criteria for confirmed case death:

- The case meets the confirmed COVID-19 surveillance case definition, AND at least ONE of the following criteria is met:
 - A case investigation determined that COVID-19 was the cause of death or contributed to the death.
 - The death certificate indicates COVID-19 or an equivalent term as one of the causes of death, regardless of the time elapsed since specimen collection of the confirmatory laboratory test used to define the case.
 - The death occurred within (and including) 30 days of specimen collection for the confirmatory laboratory test used to define the case and was due to natural causes (e.g., the Manner of Death is coded as “natural” on the death certificate.)

Criteria for probable case death:

- The case meets the probable COVID-19 case definition AND a case investigation determined that COVID-19 was the cause of death or contributed to the death; **OR**
- The case meets the probable COVID-19 surveillance case definition based on presumptive laboratory evidence AND death occurred within (and including) 30 days of specimen collection and was due to natural causes (e.g., the Manner of Death is coded as “natural” on the death certificate.); **OR**
- The case meets the probable COVID-19 surveillance case definition based on epidemiologic linkage and meeting clinical criteria, AND death occurred within (and including) 30 days of symptom onset and was due to natural causes (e.g., the Manner of Death is coded as “natural” on the death certificate.); **OR**
- The case meets the probable COVID-19 surveillance case definition based only on vital records criteria (i.e., a death certificate that lists COVID-19 disease or SARS-CoV-2 or an equivalent term as an underlying cause of death or a significant condition contributing to death and there is no confirmatory or presumptive laboratory evidence.)

Links

WCHD COVID Dashboard

<https://washoe.maps.arcgis.com/apps/dashboards/0db36fa8fa9c47758bc38210e4c23818>

WCHD website for COVID information and vaccine appointments

<https://covid19washoe.com/>

CDC COVID Data Tracker <https://covid.cdc.gov/covid-data-tracker/>

Nevada State Public Health Laboratory created a new COVID-19 variant web page

<https://www.nvsarscov2variant.com/variants>

Department of Health and Human Services Nevada Division of Public and Behavioral Health (DPBH) Technical Bulletins

https://dpbh.nv.gov/Resources/Technical_Bulletins-New/

WCHD COVID reports <https://covid19washoe.com/daily-updates/washoe-county-covid-19-data-report/>

CD Annual Report for 2021

https://www.washoecounty.gov/health/files/ephp/communicable-diseases/annual-summary/Publication_Final.pdf