

**COVID-19 Epidemiology Surveillance Program**  
**Monthly COVID-19 Report: June 2023**  
**MMWR Week #22 – 26, May 28 – July 1, 2023**

Division of Epidemiology & Public Health Preparedness (EPPH) 775-328-2447

Adam Vazquez, MPH, COVID-19 Epidemiologist [AVazquez@washoecounty.gov](mailto:AVazquez@washoecounty.gov)

Lissa Callahan, COVID-19 Statistician [LCallahan@washoecounty.gov](mailto:LCallahan@washoecounty.gov)

**Weekly Summary\***

Metrics	MMWR Week 22	MMWR Week 23	MMWR Week 24	MMWR Week 25	MMWR Week 26
Number of New Cases	64	61	49	49	43
New Cases per 100,000 Population	13	12	10	10	9
Number of New Cases Up to Date on Vaccination	17	13	15	13	11
Hospitalizations**	8	8	11	6	2
Deaths**	0	1	0	0	0

\*For definition and specifics on metrics summarized, please refer to corresponding sections.

\*\*Note: hospitalization and death totals for each week are subject to change as new reports are received on a daily basis and are often delayed, causing underreporting in more recent MMWR weeks.

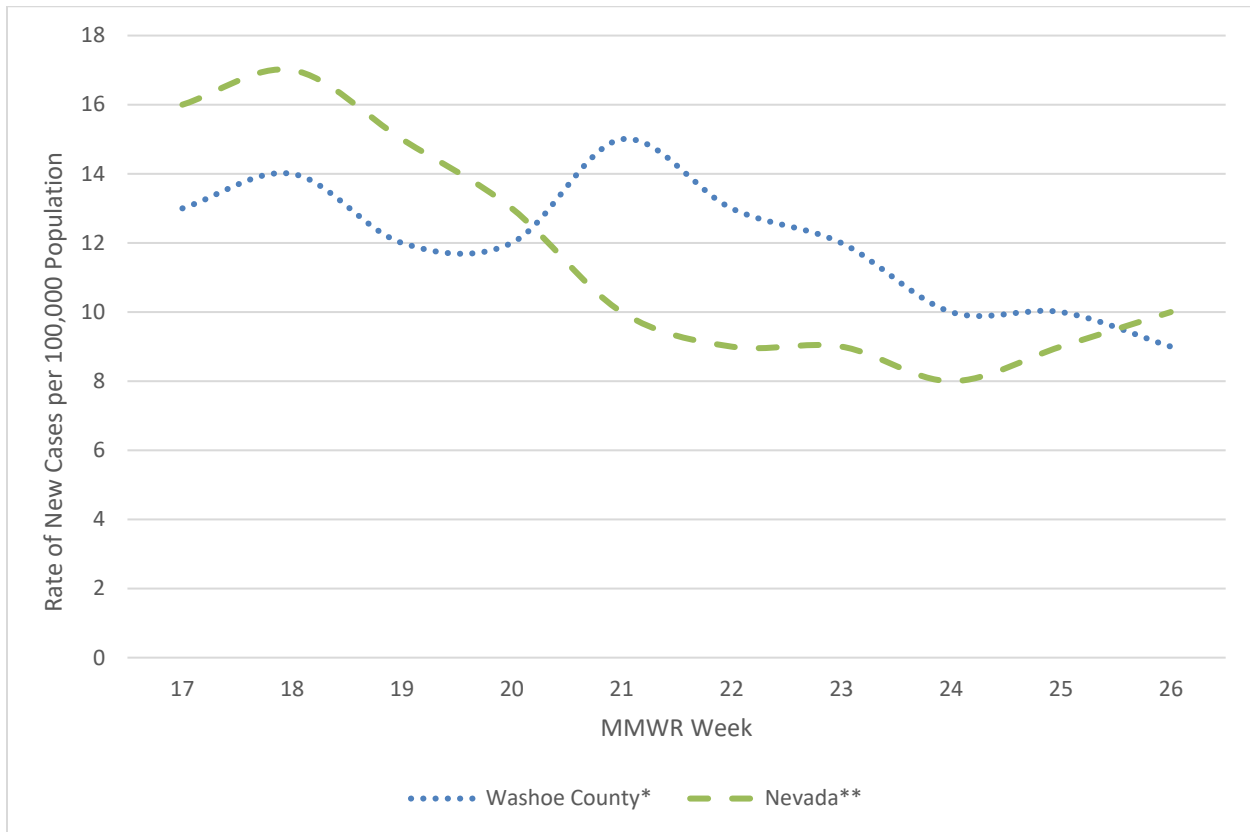
- Up to Date on Vaccination as of 7/4/2023: 81,810 persons

Key message(s)

- The number of cases reported in Washoe County decreased from 13 new cases per 100,000 population in MMWR week 22 to 9 new cases per 100,000 population in MMWR week 26.
- Only 16.5% of Washoe County’s population is up to date on vaccination.

## COVID-19 Case Information

**Figure 1. Rate of New Cases Reported by MMWR Week, Washoe County and Nevada, 2023**

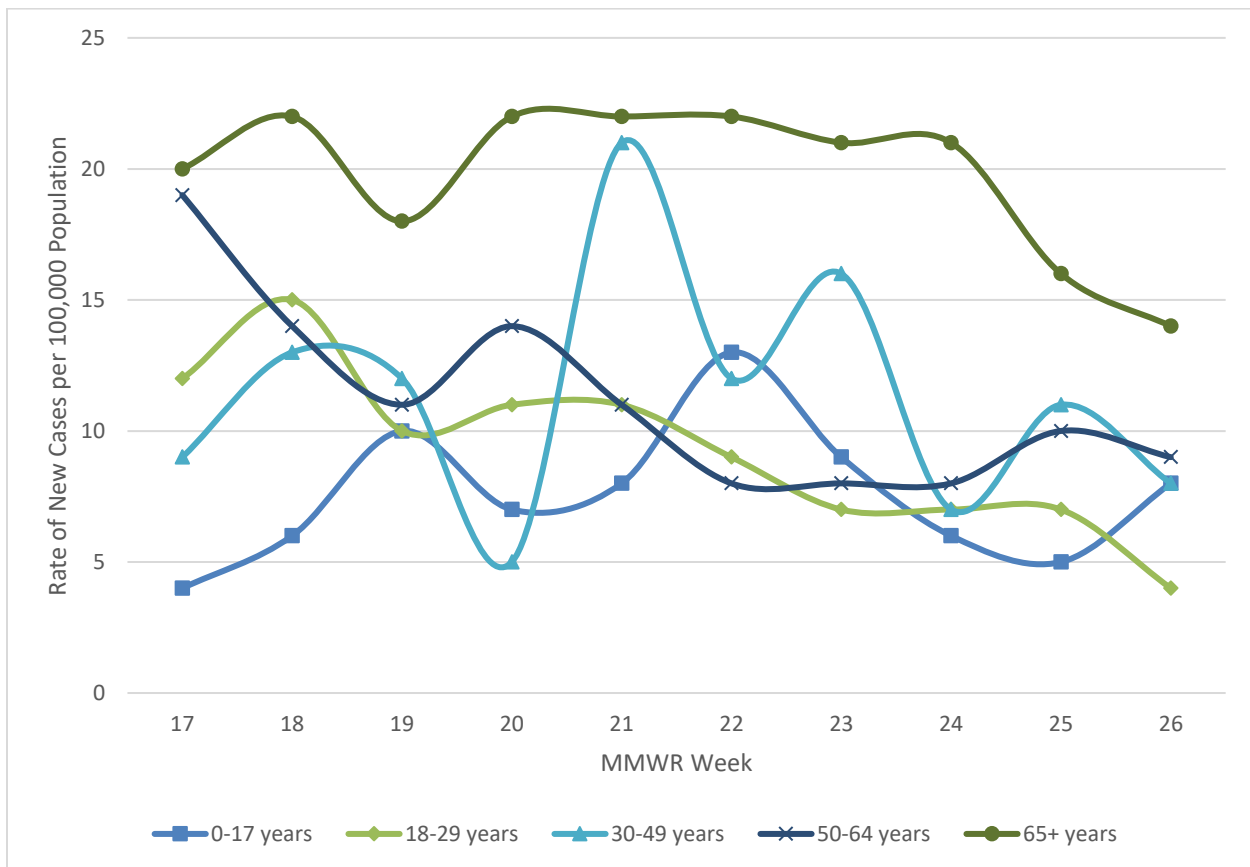


\*Data source: Internal, WCHD

\*\*Data Source: <https://nvhealthresponse.nv.gov/#covid-data-tracker>

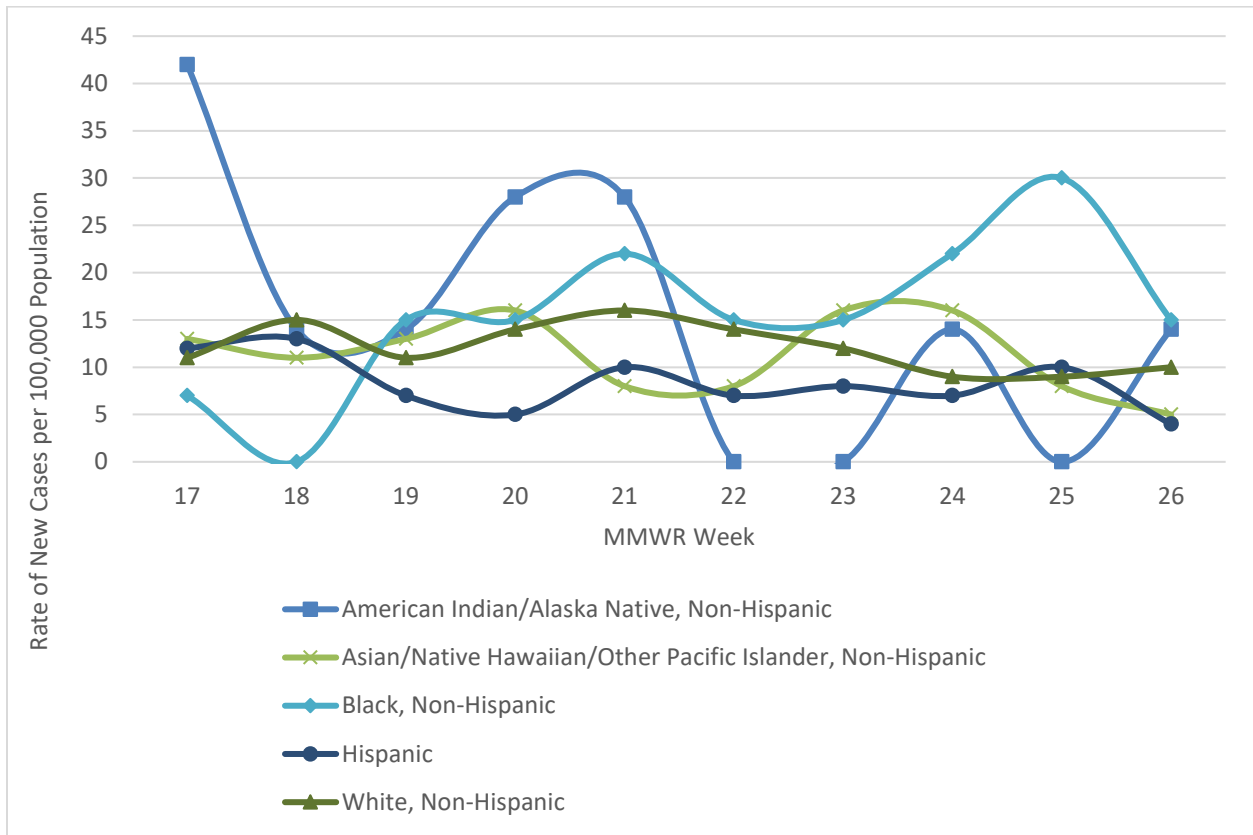
- In Washoe County, case counts decreased from a ten-week high of 73 new cases per 100,000 population in MMWR week 21 to 43 new cases per 100,000 population in MMWR week 26.
- In Nevada, case counts increased to 10 new cases per 100,000 population in MMWR week 26 from a ten-week low of 8 new cases per 100,000 population in MMWR week 24.

**Figure 2. Rate of New Cases Reported by Age Group and MMWR Week, Washoe County, 2023**



- The 65+ age group consistently had the highest case rate from MMWR week 17 through MMWR week 26 with 14 new cases per 100,000 population in MMWR week 26. This was a decrease from a ten-week high of 22 new cases per 100,000 population in MMWR week 22 for this age group.
- Through the month of June, the 18-29 age group decreased to the lowest case rate in MMWR week 26 at 4 new cases per 100,000.

**Figure 3. Rate of New Cases Reported by Race/Ethnicity\* and MMWR Week, Washoe County, 2023**



\*Note: From MMWR week 17 to MMWR week 26, 5.9% of cases were recorded as “Declined to answer”, “Multiple”, “Other”, or “Unknown” and rates per 100,000 population are unable to be calculated for those categories.

- In MMWR week 26, those who identified as Black, Non-Hispanic had the highest rate of new cases at 15 new cases per 100,000 population, which is a decrease from a ten-week high of 30 new cases per 100,000 in MMWR week 25.
- In MMWR week 26, those who identified as Hispanic had the lowest rate of new cases per 100,000 population with 4 new cases per 100,000 population.

## Hospitalizations, ICU Status, & Deaths

COVID-19 hospitalizations are defined as those hospitalized for greater than or equal to 24 hours and have a positive SARS-CoV-2 laboratory test.

COVID-19 deaths are defined as decedents who have had a positive PCR COVID-19 lab report  $\leq$  30 days from death or post-mortem. This includes deaths attributed to COVID-19 related illnesses and, if not specifically listed on death certificate, a positive PCR COVID-19 lab, dependent on the manner of death. See full definition in Glossary/Key Terms at the end of the report.

**Table 1. Number and Percent of New Cases Reported by Age and Hospitalization Status, MMWR Weeks\* 22 through 26, Washoe County, 2023**

			Age Group				
			0-17	18-29	30-49	50-64	65+
MMWR Week	22	Total Cases	12	10	9	9	27
		% Hospitalized	8.3%	0.0%	22.2%	0.0%	18.5%
	23	Total Cases	8	8	13	9	26
		% Hospitalized	0.0%	12.5%	15.4%	11.1%	15.4%
	24	Total Cases	6	8	6	9	26
		% Hospitalized	33.3%	12.5%	0.0%	11.1%	26.9%
	25	Total Cases	5	8	9	11	20
		% Hospitalized	0.0%	0.0%	0.0%	27.3%	15.0%
	26	Total Cases	7	5	6	10	17
		% Hospitalized	14.3%	0.0%	0.0%	0.0%	5.9%

\*Note: hospitalization totals for each week are subject to change as new reports are received on a daily basis and are often delayed, causing underreporting in more recent MMWR weeks.

- During MMWR weeks 24 and 26 the age group with the highest percentage of total cases resulting in hospitalization were those 0-17 years old at 33.3% of cases hospitalized in MMWR week 24 and 14.3% of cases hospitalized in MMWR week 26.
- During MMWR week 23, the 30-49 and 65+ age groups had the highest percentage of total cases resulting in hospitalization at 15.4% of cases hospitalized each.
- During MMWR week 25, the age group with the highest percentage of total cases resulting in hospitalization were those 50-64 years old at 27.3% of cases hospitalized.

**Table 2. Number and Percentage of Cases Reported by Hospitalization and ICU Status by MMWR Week\*, Washoe County, 2023**

MMWR Week	New Cases	Hospitalized		ICU	
		#	%	#	%
17	64	4	6.2	0	0.0
18	70	6	8.6	0	0.0
19	61	4	6.6	0	0.0
20	59	8	13.6	0	0.0
21	73	10	13.7	3	4.1
22	64	8	12.5	1	1.6
23	61	8	13.1	4	6.6
24	49	11	22.4	1	2.0
25	49	6	12.2	0	0.0
26	43	2	4.7	1	2.3

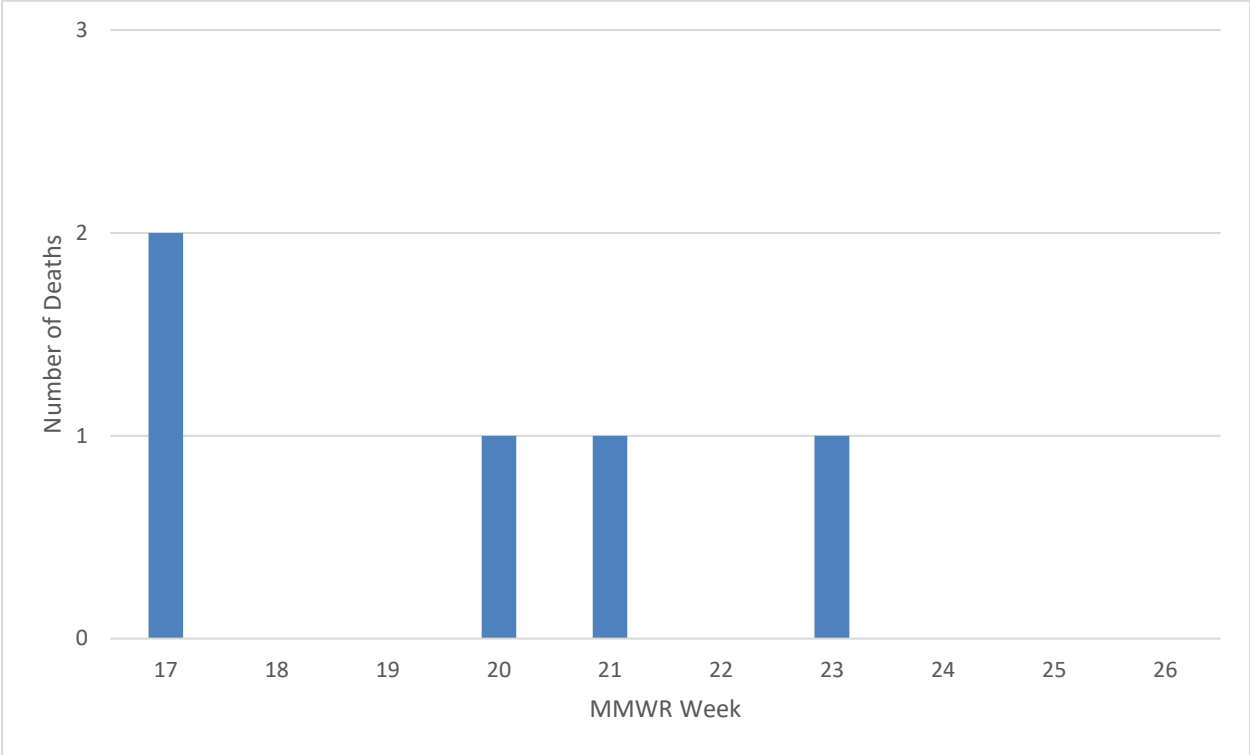
\*Note: hospitalization and ICU totals for each week are subject to change as new reports are received on a daily basis and are often delayed, causing underreporting in more recent MMWR weeks.

**Table 3. COVID-19 Deaths by Age Group and Time Period\* of Death, Washoe County, 2020-2023**

Time Period	Total Deaths	0-17 years	18-29 years	30-49 years	50-64 years	65+ years
2020 March - December	510	1	2	31	85	391
2021 Total	566	2	6	61	128	369
2022 Total	265	0	2	14	37	212
2023 January	6	0	0	0	1	5
2023 February	8	0	0	0	2	6
2023 March	8	0	0	0	0	8
2023 April	5	0	0	0	0	5
2023 May	2	0	0	0	0	2
2023 June	1	0	0	0	0	1

\*Note: death totals are subject to change as new reports are received on a daily basis and are often delayed, causing underreporting in more recent months.

**Figure 4. Number of Deaths Occurring by MMWR Week\*, Washoe County, 2023**



\*Note: death totals for each week are subject to change as new reports are received on a daily basis and are often delayed, causing underreporting in more recent MMWR weeks.

- At the time of publication, there have not been any deaths reported to have occurred during MMWR weeks 18, 19, 22, 24, 25, and 26.

## Vaccinations

Current recommendations from the CDC now classify vaccination status as not up to date or up to date on vaccination. Please see the CDC's webpage for details on what qualifies as "up to date": <https://www.cdc.gov/coronavirus/2019-ncov/vaccines/stay-up-to-date.html>.

Currently, 81,810 (16.5% of population) Washoe County residents are up to date on their vaccination; data as of 7/4/2023.

**Table 4. Percentage of Population Up to Date on Vaccination by Sex, Age Group, and Race/Ethnicity\*, Washoe County, 2023**

Select Demographics		% Population Up to Date on Vaccination
Sex	Female	17.6%
	Male	15.4%
Age Group	0-17 years	4.5%
	18-29 years	6.4%
	30-49 years	12.2%
	50-64 years	24.2%
	65+ years	41.5%
Race / Ethnicity*	American Indian/Alaska Native, Non-Hispanic**	11.6%
	Asian/Native Hawaiian/Other Pacific Islander, Non-Hispanic	10.1%
	Black, Non-Hispanic	7.1%
	Hispanic	7.0%
	White, Non-Hispanic	13.2%

\*Note: 32.6% of the total vaccinated population were recorded as "Unknown" or "Other" and therefore population percentages are unable to be calculated for those categories.

\*\*Note: Tribal populations may be underrepresented as the data source does not include Indian Health Services (IHS) data, which may contain vaccination records for tribal members and those who access services through IHS clinics.

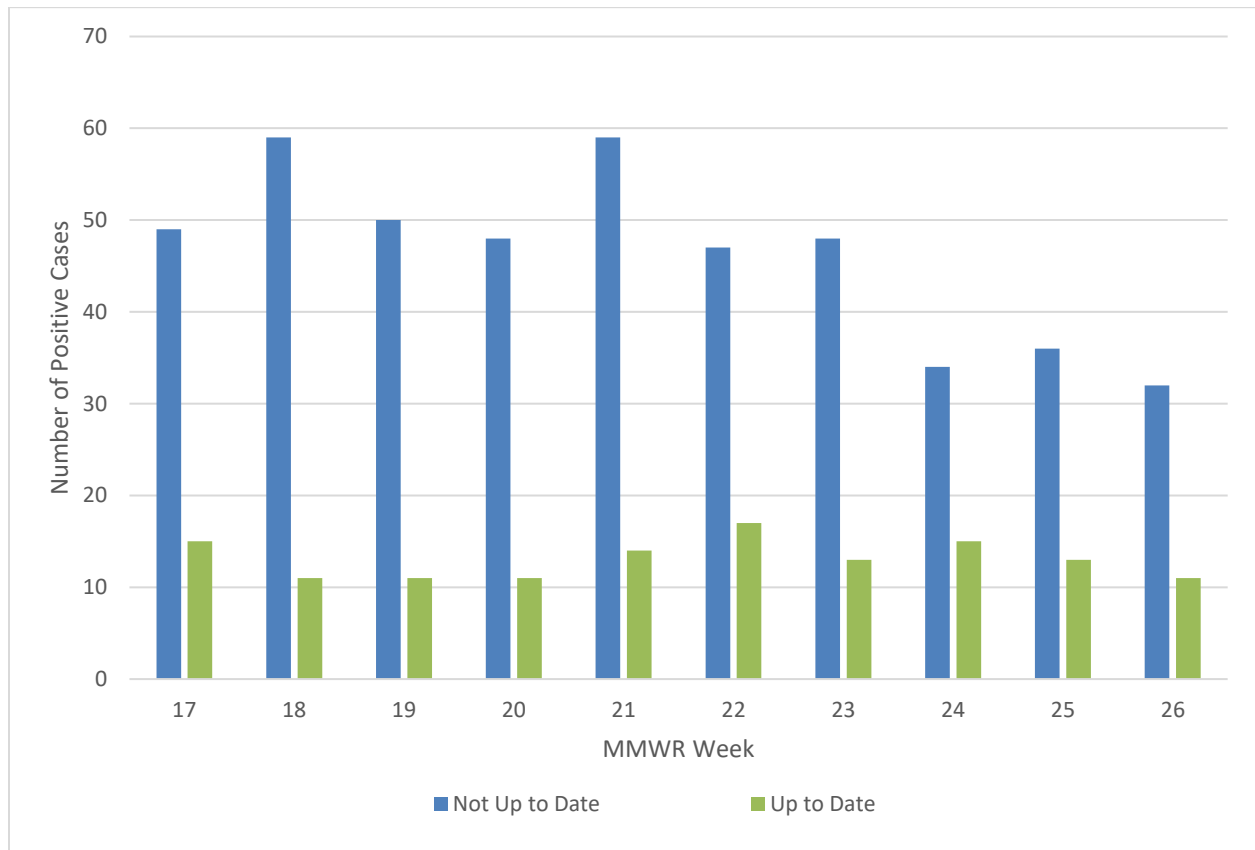
- In Washoe County, the age group with the highest percent population up to date on their COVID-19 vaccination are those 65+ years, with 41.5% of the population.
- Those who identify as White, Non-Hispanic have the highest percent population that is up to date on their COVID-19 vaccination with 13.2% of the population.



## Cases by Vaccination Status

Cases by vaccination status compares the number of cases, based on if they are up to date or not up to date on their COVID-19 vaccination.

**Figure 5. Number of Cases by Vaccination Status and MMWR Week\*, Washoe County, 2023**



\*Note: vaccination data for each week are subject to change as vaccinations are updated regularly and are often on a delay internally, causing underreporting in more recent MMWR weeks.

- Cases who are not up to date on their COVID-19 vaccination consistently make up a higher percentage of total cases than those who are up to date.
- Those who are not up to date made up 69.4% of new cases in MMWR week 24 and increased to 74.4% of new cases by MMWR week 26.
- Cases who were up to date on their vaccination made up 30.6% of new cases in MMWR week 24 and decreased to 25.6% of new cases by MMWR week 26.

**Table 5. Number and Percentage of Cases Reporting with Hospitalization and ICU by Vaccination Status and MMWR Week\*, Washoe County, 2023**

All Cases				Cases Not Up to Date on Vaccination				Cases Up to Date on Vaccination			
MMWR Week	New Cases	Total Hospitalized	Total ICU	Hospitalized		ICU		Hospitalized		ICU	
				#	% <sup>a</sup>	#	% <sup>b</sup>	#	% <sup>a</sup>	#	% <sup>b</sup>
17	64	4	0	3	75.0	0	0.0	1	25.0	0	0.0
18	70	6	0	4	66.7	0	0.0	2	33.3	0	0.0
19	61	4	0	4	100.0	0	0.0	0	0.0	0	0.0
20	59	8	0	6	75.0	0	0.0	2	25.0	0	0.0
21	73	10	3	9	90.0	3	100.0	1	10.0	0	0.0
22	64	8	1	6	75.0	0	0.0	2	25.0	1	100.0
23	61	8	4	5	62.5	2	50.0	3	37.5	2	50.0
24	49	11	1	9	81.8	1	100.0	2	18.2	0	0.0
25	49	6	0	3	50.0	0	0.0	3	50.0	0	0.0
26	43	2	1	1	50.0	1	100.0	1	50.0	0	0.0

\*Note: hospitalization and ICU totals for each week are subject to change as new reports are received on a daily basis and are often delayed, causing underreporting in more recent MMWR weeks.

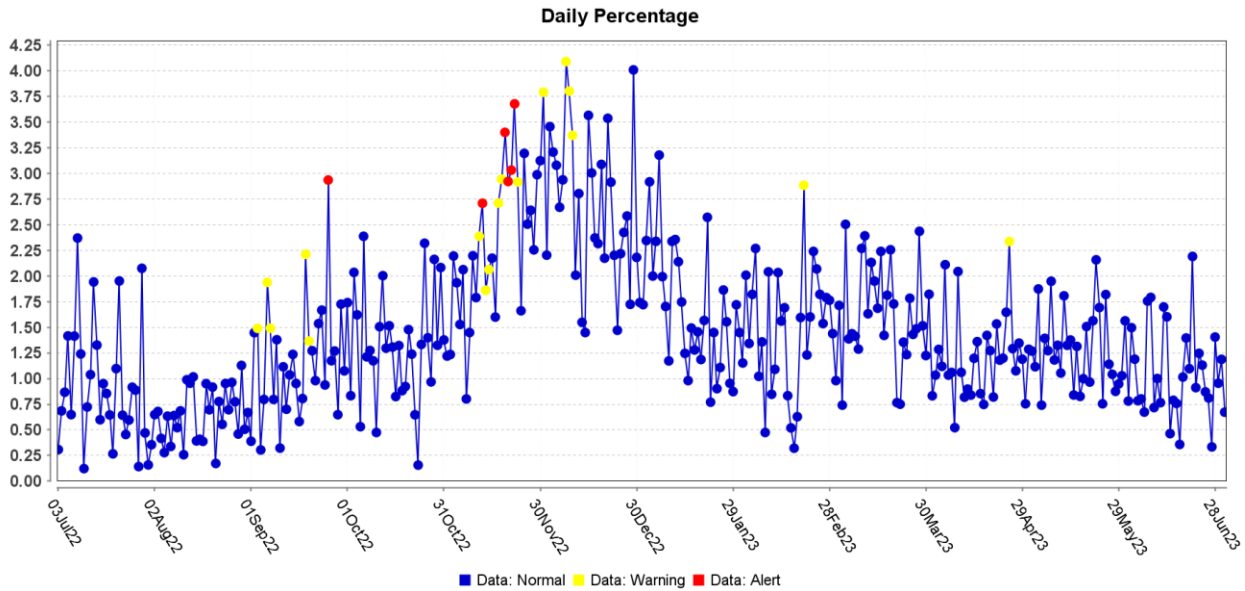
<sup>a</sup> Calculated as the percentage of Total Hospitalizations by vaccination status for the MMWR week.

<sup>b</sup> Calculated as the percentage of Total ICU by vaccination status for the MMWR week.

## Surveillance Data

The percentage of persons indicating COVID-19 as the reason for visit to the Emergency Room (ER) is presented in Figure 6. The overlay below depicts COVID-19 in blue. Alerts appear as yellow and/or red dots. They indicate an unusually high percentage of COVID-19 visits according to ESSENCE algorithms.

**Figure 6. Percentage of ER Visits Due to COVID in the Last Year, Washoe County**



Data source: ESSENCE

## Glossary/Key Terms

### **Data**

Unless otherwise noted, data in this report are based on symptom onset date (when available or applicable), otherwise sample collection date is used. The Nevada State Demographer's data were used for population and demographics for Washoe County throughout this report.

### **COVID-19 Case**

Coronavirus Disease 2019 (COVID-19) cases counted in this document are confirmed or probable cases as determined by meeting confirmatory laboratory evidence, clinical criteria, and/or epidemiologic linkage as defined on the CDC website here:

<https://ndc.services.cdc.gov/case-definitions/coronavirus-disease-2019-2021/>

### **Up to Date on COVID-19 Vaccination**

Current recommendations from the CDC now classify vaccination status as not up to date or up to date on vaccination.

Please see the CDC's webpage for details on what qualifies as "up to date" for different age groups: <https://www.cdc.gov/coronavirus/2019-ncov/vaccines/stay-up-to-date.html>.

### **COVID-19 Hospitalization**

COVID-19 hospitalizations are counted as those hospitalized for greater than or equal to 24 hours and have a positive SARS-CoV-2 laboratory test.

As of October 2022, this includes any patient with a positive result on a SARS-CoV-2 laboratory test collected from 14 days before through three days after hospital admission.

- (<https://preparedness.cste.org/wp-content/uploads/2022/10/Interim-CSTE-Guidance-for-COVID-Hospitalization.pdf>)

### **COVID-19 Death**

As of January 1, 2022, both Confirmed and Probable COVID-19-associated deaths are included in the count.

- ([https://cdn.ymaws.com/www.cste.org/resource/resmgr/pdfs/pdfs2/20211222\\_interim-guidance.pdf](https://cdn.ymaws.com/www.cste.org/resource/resmgr/pdfs/pdfs2/20211222_interim-guidance.pdf))

Criteria for confirmed case death:

- The case meets the confirmed COVID-19 surveillance case definition, AND at least ONE of the following criteria is met:
  - A case investigation determined that COVID-19 was the cause of death or contributed to the death.
  - The death certificate indicates COVID-19 or an equivalent term as one of the causes of death, regardless of the time elapsed since specimen collection of the confirmatory laboratory test used to define the case.

- The death occurred within (and including) 30 days of specimen collection for the confirmatory laboratory test used to define the case and was due to natural causes (e.g., the Manner of Death is coded as “natural” on the death certificate.)

Criteria for probable case death:

- The case meets the probable COVID-19 case definition AND a case investigation determined that COVID-19 was the cause of death or contributed to the death; **OR**
- The case meets the probable COVID-19 surveillance case definition based on presumptive laboratory evidence AND death occurred within (and including) 30 days of specimen collection and was due to natural causes (e.g., the Manner of Death is coded as “natural” on the death certificate.); **OR**
- The case meets the probable COVID-19 surveillance case definition based on epidemiologic linkage and meeting clinical criteria, AND death occurred within (and including) 30 days of symptom onset and was due to natural causes (e.g., the Manner of Death is coded as “natural” on the death certificate.); **OR**
- The case meets the probable COVID-19 surveillance case definition based only on vital records criteria (i.e., a death certificate that lists COVID-19 disease or SARS-CoV-2 or an equivalent term as an underlying cause of death or a significant condition contributing to death and there is no confirmatory or presumptive laboratory evidence.)

## Links

### WCHD COVID Dashboard

<https://washoe.maps.arcgis.com/apps/dashboards/0db36fa8fa9c47758bc38210e4c23818>

### WCHD website for COVID information and vaccine appointments

<https://covid19washoe.com/>

CDC COVID Data Tracker <https://covid.cdc.gov/covid-data-tracker/>

### Nevada State Public Health Laboratory created a new COVID-19 variant web page

<https://www.nvsarscov2variant.com/variants>

### Department of Health and Human Services Nevada Division of Public and Behavioral Health (DPBH) Technical Bulletins

[https://dpbh.nv.gov/Resources/Technical\\_Bulletins-New/](https://dpbh.nv.gov/Resources/Technical_Bulletins-New/)

WCHD COVID reports <https://covid19washoe.com/daily-updates/washoe-county-covid-19-data-report/>

### CD Annual Report for 2021

[https://www.washoecounty.gov/health/files/ephp/communicable-diseases/annual-summary/Publication\\_Final.pdf](https://www.washoecounty.gov/health/files/ephp/communicable-diseases/annual-summary/Publication_Final.pdf)