

Division of Epidemiology & Public Health Preparedness (EPHP) 775-328-2447

Adam Vazquez, MPH, COVID-19 Epidemiologist AVazquez@nnph.org

Lissa Callahan, COVID-19 Statistician LCallahan@nnph.org

Weekly Summary*

Metrics	MMWR Week 31	MMWR Week 32	MMWR Week 33	MMWR Week 34	MMWR Week 35
Number of New Cases	220	208	241	314	325
New Cases per 100,000 Population	44	42	49	63	66
Number of New Cases Up to Date on Vaccination	41	32	41	27	14
Hospitalizations**	9	14	14	11	8
Deaths**	1	0	1	0	1

*For definition and specifics on metrics summarized, please refer to corresponding sections.

**Note: hospitalization and death totals for each week are subject to change as new reports are received on a daily basis and are often delayed, causing underreporting in more recent MMWR weeks.

- Up to Date on Vaccination as of 9/4/2023: 83,201 persons

Key message(s)

- The number of cases reported in Washoe County increased from 44 new cases per 100,000 population in MMWR week 31 to 66 new cases per 100,000 population in MMWR week 35.
- Only 16.8% of Washoe County’s population is up to date on vaccination.

COVID-19 Case Information

Figure 1. Rate of New Cases Reported by MMWR Week, Washoe County and Nevada, 2023

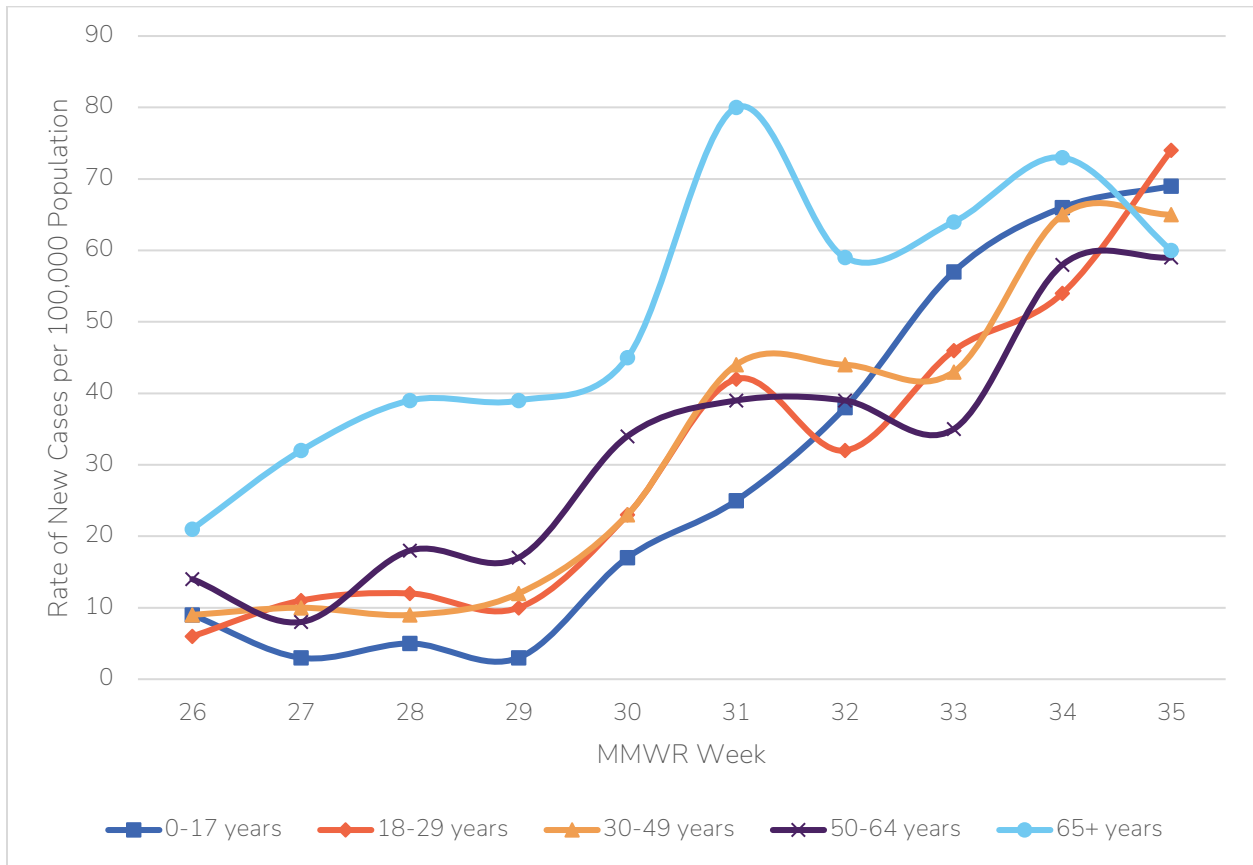


*Data source: Internal, NNPH

**Data Source: <https://nvhealthresponse.nv.gov/#covid-data-tracker>

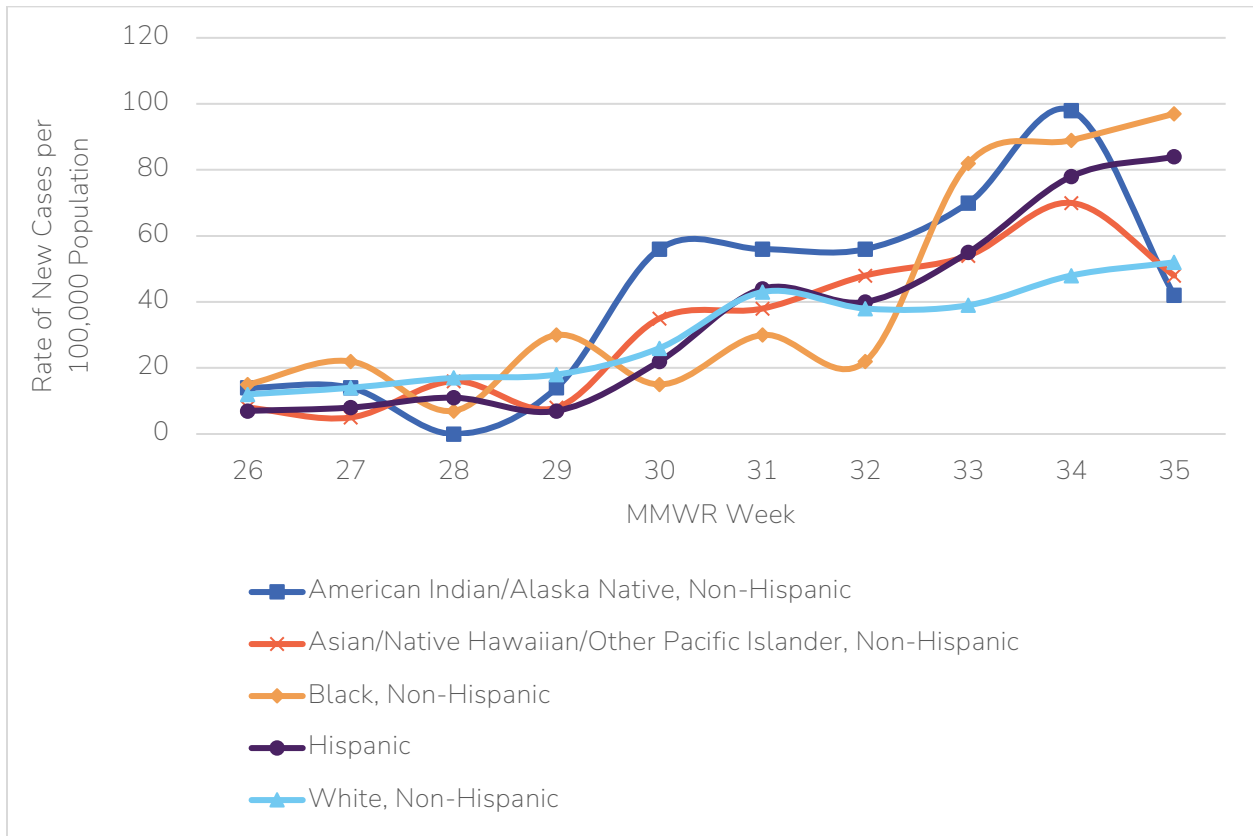
- In Washoe County, case counts increased from a ten-week low of 11 new cases per 100,000 population in MMWR week 26 to 66 new cases per 100,000 population in MMWR week 35.
- In Nevada, case counts increased from a ten-week low of 9 new cases per 100,000 population in MMWR week 27 to 32 new cases per 100,000 population in MMWR week 35.

Figure 2. Rate of New Cases Reported by Age Group and MMWR Week, Washoe County, 2023



- The 65+ age group consistently had the highest case rate from MMWR week 26 through MMWR week 34 with 73 new cases per 100,000 population in MMWR week 34. The 65+ age group decreased to 60 new cases per 100,000 population in MMWR week 35, where the 18-29 age group instead ended the reporting period with the highest cases rate of 74 new cases per 100,000 population in MMWR week 35.
- For the month of August (MMWR week 31 through MMWR week 35), the 0-17, 18-29, and 50-64 age groups each presented as the age group with the lowest case rate during various MMWR weeks.

Figure 3. Rate of New Cases Reported by Race/Ethnicity* and MMWR Week, Washoe County, 2023



*Note: From MMWR week 26 to MMWR week 35, 5.3% of cases were recorded as “Declined to answer”, “Multiple”, “Other”, or “Unknown” and rates per 100,000 population are unable to be calculated for those categories.

- In MMWR week 35, those who identified as Black, Non-Hispanic had the highest rate of new cases with 97 new cases per 100,000 population each.
- In MMWR week 35, those who identified as American Indian/Alaska Native, Non-Hispanic had the lowest rate of new cases per 100,000 population with 42 new cases per 100,000 population.

Hospitalizations, ICU Status, & Deaths

COVID-19 hospitalizations are defined as those hospitalized for greater than or equal to 24 hours and have a positive SARS-CoV-2 laboratory test.

As of July 1, 2023, COVID-19-associated deaths include cases investigated for a confirmed SARS-CoV-2 infection and determined that COVID-19 was the cause of death or COVID-19 contributed to the cause of death and/or is specified on the death certificate as a cause of death. See current and previous full definitions in Glossary/Key Terms at the end of the report.

Table 1. Number and Percent of New Cases Reported by Age and Hospitalization Status, MMWR Weeks* 31 through 35, Washoe County, 2023

			Age Group				
			0-17	18-29	30-49	50-64	65+
MMWR Week	31	Total Cases	27	37	56	35	65
		% Hospitalized	0.0%	0.0%	0.0%	8.6%	9.2%
	32	Total Cases	41	28	56	35	48
		% Hospitalized	2.4%	0.0%	3.6%	2.9%	20.8%
	33	Total Cases	62	41	54	32	52
		% Hospitalized	0.0%	4.9%	0.0%	6.3%	19.2%
	34	Total Cases	71	48	83	52	60
		% Hospitalized	0.0%	0.0%	0.0%	1.9%	16.7%
	35	Total Cases	75	66	82	53	49
		% Hospitalized	1.3%	0.0%	1.2%	3.8%	8.2%

*Note: hospitalization totals for each week are subject to change as new reports are received on a daily basis and are often delayed, causing underreporting in more recent MMWR weeks.

- During MMWR weeks 31 through 35 the age group with the highest percentage of total cases resulting in hospitalization was the 65+ age group, with a high of 20.8% of cases hospitalized in MMWR week 32.

Table 2. Number and Percentage of Cases Reported by Hospitalization and ICU Status by MMWR Week*, Washoe County, 2023

MMWR Week	New Cases	Hospitalized		ICU	
		#	%	#	%
26	57	4	7.0	2	3.5
27	59	8	13.6	0	0.0
28	76	6	7.9	0	0.0
29	74	8	10.8	1	1.4
30	135	8	5.9	0	0.0
31	220	9	4.1	0	0.0
32	208	14	6.7	1	0.5
33	241	14	5.8	2	0.8
34	314	11	3.5	1	0.3
35	325	8	2.5	0	0.0

*Note: hospitalization and ICU totals for each week are subject to change as new reports are received on a daily basis and are often delayed, causing underreporting in more recent MMWR weeks.

Table 3. COVID-19 Deaths by Age Group and Time Period* of Death, Washoe County, 2020-2023

Time Period	Total Deaths	0-17 years	18-29 years	30-49 years	50-64 years	65+ years
2020 March - December	510	1	2	31	86	390
2021 Total	566	2	6	61	128	369
2022 Total	265	0	2	14	37	212
2023 January	6	0	0	0	1	5
2023 February	8	0	0	0	2	6
2023 March	8	0	0	0	0	8
2023 April	5	0	0	0	0	5
2023 May	2	0	0	0	0	2
2023 June	2	0	0	0	0	2
2023 July	0	0	0	0	0	0
2023 August	3	0	0	0	0	3

*Note: death totals are subject to change as new reports are received on a daily basis and are often delayed, causing underreporting in more recent months.

Vaccinations

Current recommendations from the CDC now classify vaccination status as not up to date or up to date on vaccination. Please see the CDC's webpage for details on what qualifies as "up to date": <https://www.cdc.gov/coronavirus/2019-ncov/vaccines/stay-up-to-date.html>.

Currently, 83,201 (16.8% of population) Washoe County residents are up to date on their vaccination; data as of 9/4/2023.

Table 4. Percentage of Population Up to Date on Vaccination by Sex, Age Group, and Race/Ethnicity*, Washoe County, 2023

Select Demographics		% Population Up to Date on Vaccination
Sex	Female	17.9%
	Male	15.7%
Age Group	0-17 years	4.8%
	18-29 years	6.6%
	30-49 years	12.5%
	50-64 years	24.5%
	65+ years	41.9%
Race / Ethnicity*	American Indian/Alaska Native, Non-Hispanic**	12.1%
	Asian/Native Hawaiian/Other Pacific Islander, Non-Hispanic	10.3%
	Black, Non-Hispanic	7.3%
	Hispanic	7.3%
	White, Non-Hispanic	13.3%

*Note: 32.7% of the total vaccinated population were recorded as "Unknown" or "Other" and therefore population percentages are unable to be calculated for those categories.

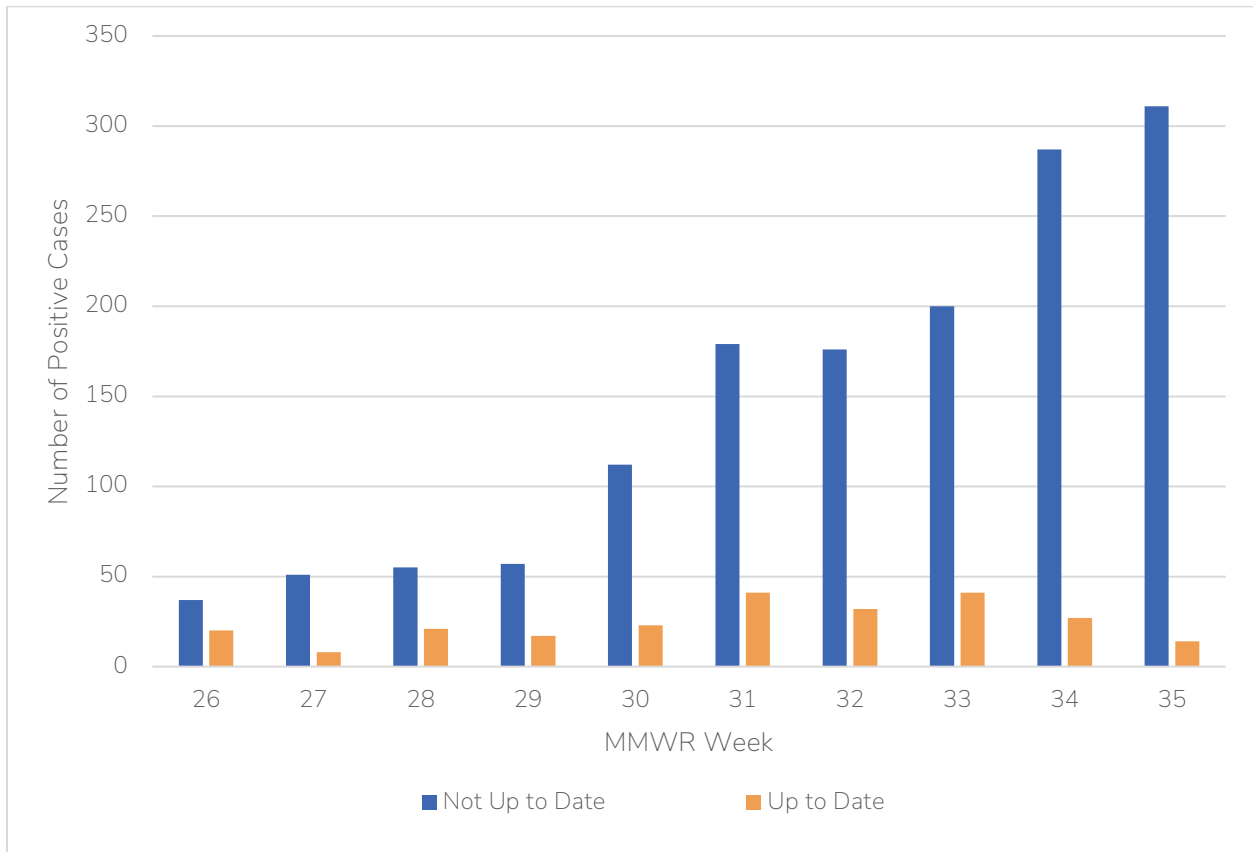
**Note: Tribal populations may be underrepresented as the data source does not include Indian Health Services (IHS) data, which may contain vaccination records for tribal members and those who access services through IHS clinics.

- In Washoe County, the age group with the highest percent population up to date on their COVID-19 vaccination are those 65+ years, with 41.9% of the population.
- Those who identify as White, Non-Hispanic have the highest percent population that is up to date on their COVID-19 vaccination with 13.3% of the population.

Cases by Vaccination Status

Cases by vaccination status compares the number of cases, based on if they are up to date or not up to date on their COVID-19 vaccination.

Figure 4. Number of Cases by Vaccination Status and MMWR Week*, Washoe County, 2023



*Note: vaccination data for each week are subject to change as vaccinations are updated regularly and are often on a delay internally, causing underreporting in more recent MMWR weeks.

- Cases who are not up to date on their COVID-19 vaccination consistently make up a higher percentage of total cases than those who are up to date.
- Those who are not up to date on their vaccination made up 81.4% of new cases in MMWR week 31 and increased to 95.7% of new cases by MMWR week 35.
- Cases who were up to date on their vaccination made up 18.6% of new cases in MMWR week 31 and decreased to 4.3% of new cases by MMWR week 35.

Table 5. Number and Percentage of Cases Reporting with Hospitalization and ICU by Vaccination Status and MMWR Week*, Washoe County, 2023

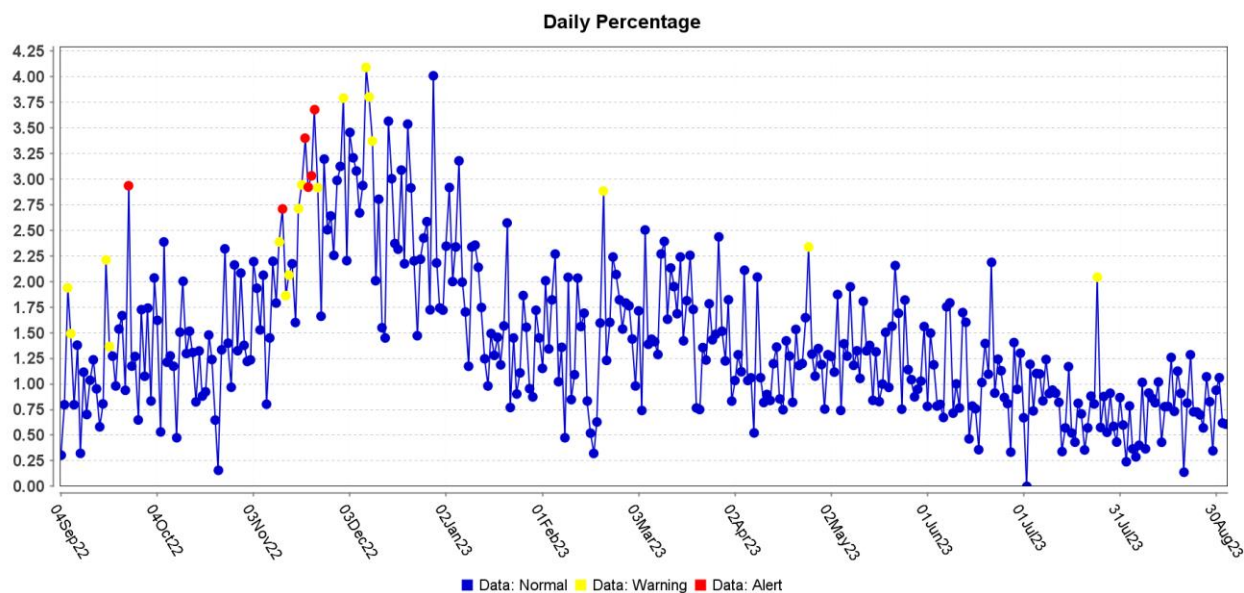
All Cases				Cases Not Up to Date on Vaccination		Cases Up to Date on Vaccination	
MMWR Week	New Cases	Total Hospitalized	Total ICU	Hospitalized	ICU	Hospitalized	ICU
26	57	4	2	3	2	1	0
27	59	8	0	5	0	3	0
28	76	6	0	5	0	1	0
29	74	8	1	7	1	1	0
30	135	8	0	6	0	2	0
31	220	9	0	4	0	5	0
32	208	14	1	12	0	2	1
33	241	14	2	11	2	3	0
34	314	11	1	10	1	1	0
35	325	8	0	8	0	0	0

*Note: hospitalization and ICU totals for each week are subject to change as new reports are received on a daily basis and are often delayed, causing underreporting in more recent MMWR weeks.

Surveillance Data

The percentage of persons indicating COVID-19 as the reason for visit to the Emergency Room (ER) is presented in Figure 5. The overlay below depicts COVID-19 in blue. Alerts appear as yellow and/or red dots. They indicate an unusually high percentage of COVID-19 visits according to ESSENCE algorithms.

Figure 5. Percentage of ER Visits Due to COVID in the Last Year, Washoe County



Data source: ESSENCE

Glossary/Key Terms

Data

Unless otherwise noted, data in this report are based on symptom onset date (when available or applicable), otherwise sample collection date is used. The Nevada State Demographer's data were used for population and demographics for Washoe County throughout this report.

COVID-19 Case

Coronavirus Disease 2019 (COVID-19) cases counted in this document are confirmed or probable cases as determined by meeting confirmatory laboratory evidence, clinical criteria, and/or epidemiologic linkage as defined on the CDC website here:

<https://ndc.services.cdc.gov/case-definitions/coronavirus-disease-2019-2021/>

Up to Date on COVID-19 Vaccination

Current recommendations from the CDC now classify vaccination status as not up to date or up to date on vaccination.

Please see the CDC's webpage for details on what qualifies as "up to date" for different age groups: <https://www.cdc.gov/coronavirus/2019-ncov/vaccines/stay-up-to-date.html>.

COVID-19 Hospitalization

COVID-19 hospitalizations are counted as those hospitalized for greater than or equal to 24 hours and have a positive SARS-CoV-2 laboratory test.

As of October 2022, this includes any patient with a positive result on a SARS-CoV-2 laboratory test collected from 14 days before through three days after hospital admission.

- (<https://preparedness.cste.org/wp-content/uploads/2022/10/Interim-CSTE-Guidance-for-COVID-Hospitalization.pdf>)

COVID-19 Death

As of January 1, 2022, both Confirmed and Probable COVID-19-associated deaths are included in the count.

- (https://cdn.ymaws.com/www.cste.org/resource/resmgr/pdfs/pdfs2/20211222_interim-guidance.pdf)

Criteria for confirmed case death:

- The case meets the confirmed COVID-19 surveillance case definition, AND at least ONE of the following criteria is met:
- A case investigation determined that COVID-19 was the cause of death or contributed to the death.

- The death certificate indicates COVID-19 or an equivalent term as one of the causes of death, regardless of the time elapsed since specimen collection of the confirmatory laboratory test used to define the case.
- The death occurred within (and including) 30 days of specimen collection for the confirmatory laboratory test used to define the case and was due to natural causes (e.g., the Manner of Death is coded as “natural” on the death certificate.)

Criteria for probable case death:

- The case meets the probable COVID-19 case definition AND a case investigation determined that COVID-19 was the cause of death or contributed to the death; OR
- The case meets the probable COVID-19 surveillance case definition based on presumptive laboratory evidence AND death occurred within (and including) 30 days of specimen collection and was due to natural causes (e.g., the Manner of Death is coded as “natural” on the death certificate.); OR
- The case meets the probable COVID-19 surveillance case definition based on epidemiologic linkage and meeting clinical criteria, AND death occurred within (and including) 30 days of symptom onset and was due to natural causes (e.g., the Manner of Death is coded as “natural” on the death certificate.); OR
- The case meets the probable COVID-19 surveillance case definition based only on vital records criteria (i.e., a death certificate that lists COVID-19 disease or SARS-CoV-2 or an equivalent term as an underlying cause of death or a significant condition contributing to death and there is no confirmatory or presumptive laboratory evidence.)

As of July 1, 2023, in alignment with the CSTE laboratory criteria used to classify cases, COVID-19-associated deaths include:

- A case investigation for a confirmed SARS-CoV-2 infection determined that COVID-19 was the cause of death or contributed to the cause of death; AND/OR
- The death certificate lists a specific COVID-19 ICD code.

The previously used confirmed, probable, and suspected death classifications are discontinued.

Links

NNPH COVID Dashboard

<https://washoe.maps.arcgis.com/apps/dashboards/0db36fa8fa9c47758bc38210e4c23818>

NNPH website for COVID information and vaccine appointments

<https://covid19washoe.com/>

CDC COVID Data Tracker <https://covid.cdc.gov/covid-data-tracker/>

Department of Health and Human Services Nevada Division of Public and Behavioral Health (DPBH) Technical Bulletins https://dphh.nv.gov/Resources/Technical_Bulletins-New/

NNPH COVID-19 Surveillance Report 2020-2022 <https://www.nnph.org/programs-and-services/ephp/statistics-surveillance-reports/index.php>

NNPH COVID reports <https://covid19washoe.com/daily-updates/washoe-county-covid-19-data-report/>