

**COVID-19 Epidemiology Surveillance Program**  
**Monthly COVID-19 Report: March 2024**  
**MMWR Week #9 – 14, Feb. 25 – Apr. 6, 2024**

Division of Epidemiology & Public Health Preparedness (EHPH) 775-328-2447

Adam Vazquez, MPH, COVID-19 Epidemiologist AVazquez@nnph.org

Lissa Callahan, COVID-19 Statistician LCallahan@nnph.org

**Weekly Summary\***

Metrics	MMWR Week 9	MMWR Week 10	MMWR Week 11	MMWR Week 12	MMWR Week 13	MMWR Week 14
<b>Number of New Cases</b>	148	90	105	79	66	52
<b>New Cases per 100,000 Population</b>	29	18	21	16	13	10
<b>Hospitalizations**</b>	19	5	8	4	11	6
<b>Deaths**</b>	0	0	0	0	0	1

\*For definition and specifics on metrics summarized, please refer to corresponding sections.

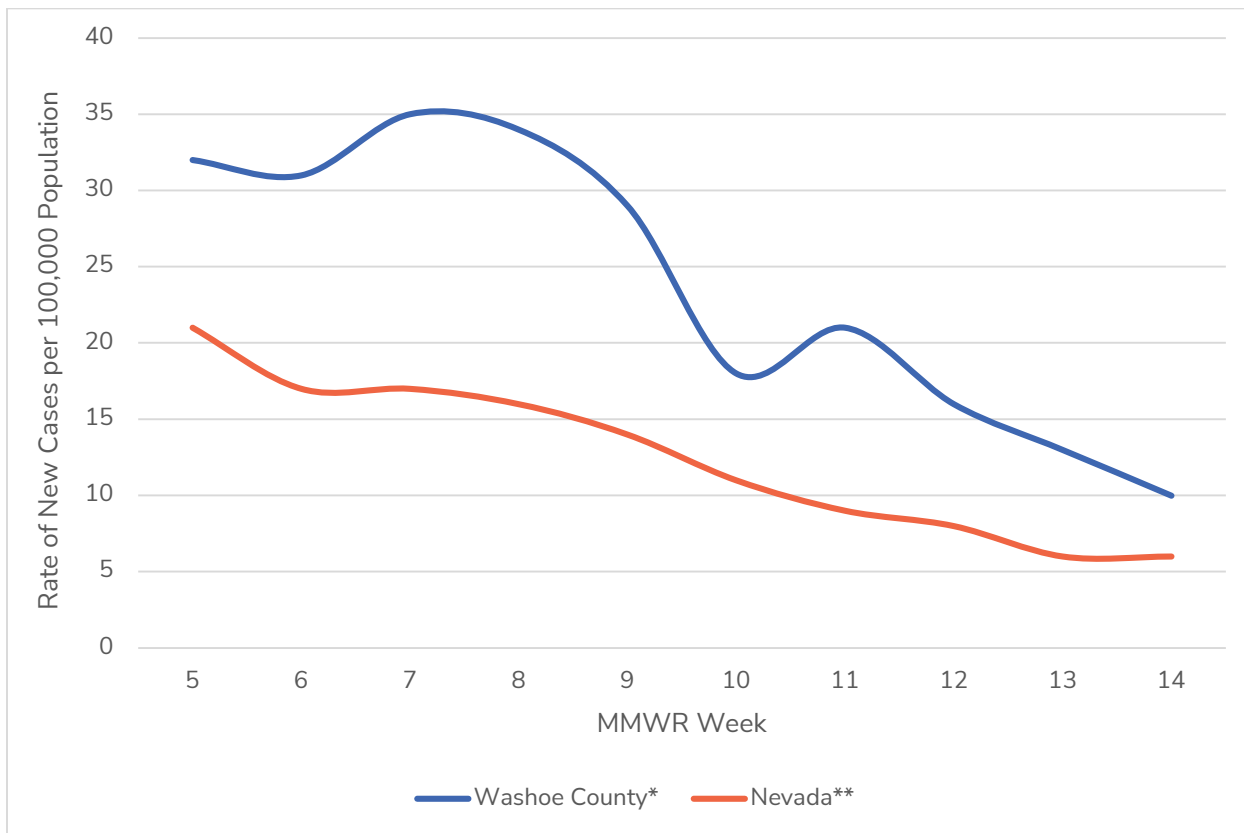
\*\*Note: hospitalization and death totals for each week are subject to change as new reports are received on a daily basis and are often delayed, causing underreporting in more recent MMWR weeks.

**Key Message(s)**

- The number of cases reported in Washoe County decreased from 29 new cases per 100,000 population in MMWR week 9 to 10 new cases per 100,000 population in MMWR week 14.
- There were 6 weeks during which no deaths due to COVID-19 are currently known to have occurred (between MMWR week 8 and week 14).

# COVID-19 Case Information

**Figure 1. Rate of New Cases Reported by MMWR Week, Washoe County and Nevada, 2024**



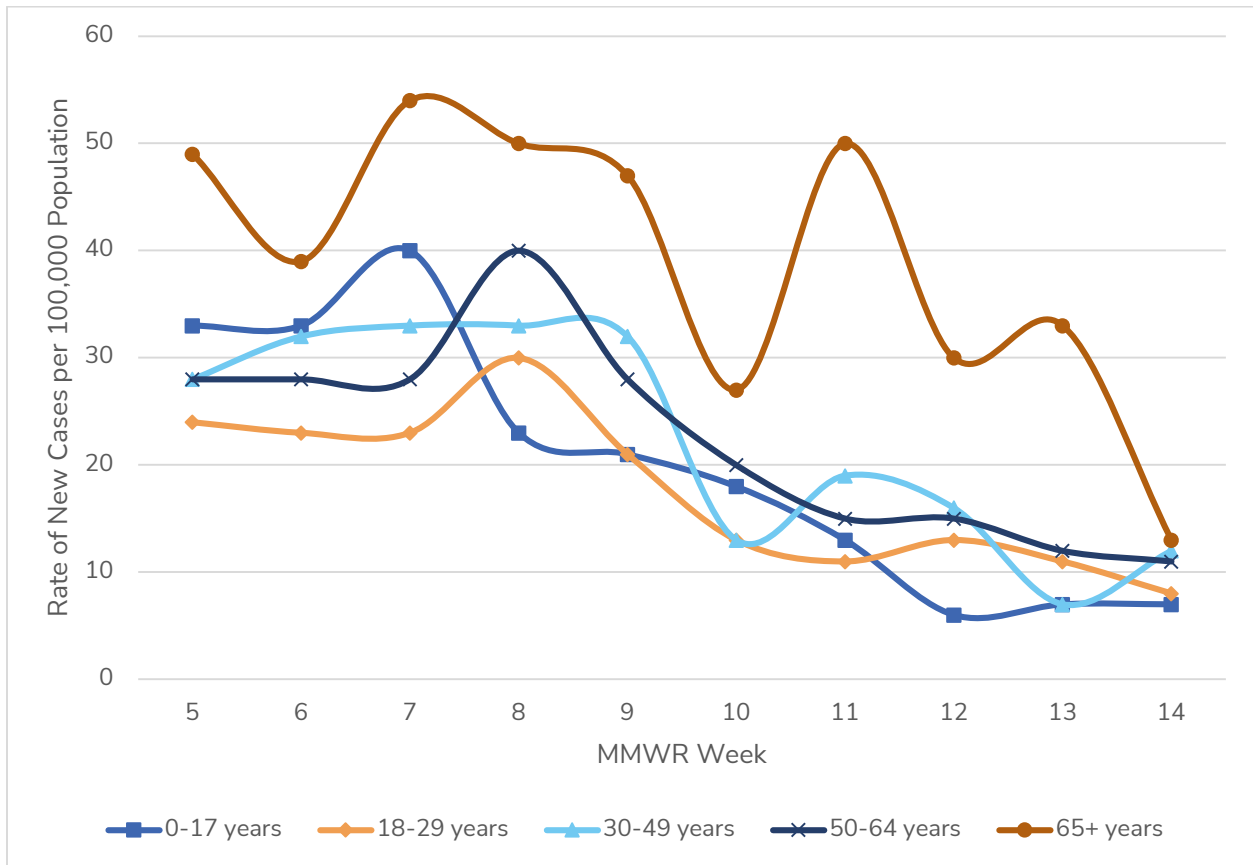
\*Data source: Internal, NNPH

\*\*Data Source:

<https://app.powerbigov.us/view?r=eyJrIjoibWJhZ2ZThiOWUtM2FiNS00MGY5LWFmYjUtNmQwNTQ3Nzg5N2I2liwidCI6ImU0YTM0MGU2LWI4OWUtNGU2OC04ZWZhLTE1NDRkMjcwMzk4MCI9>

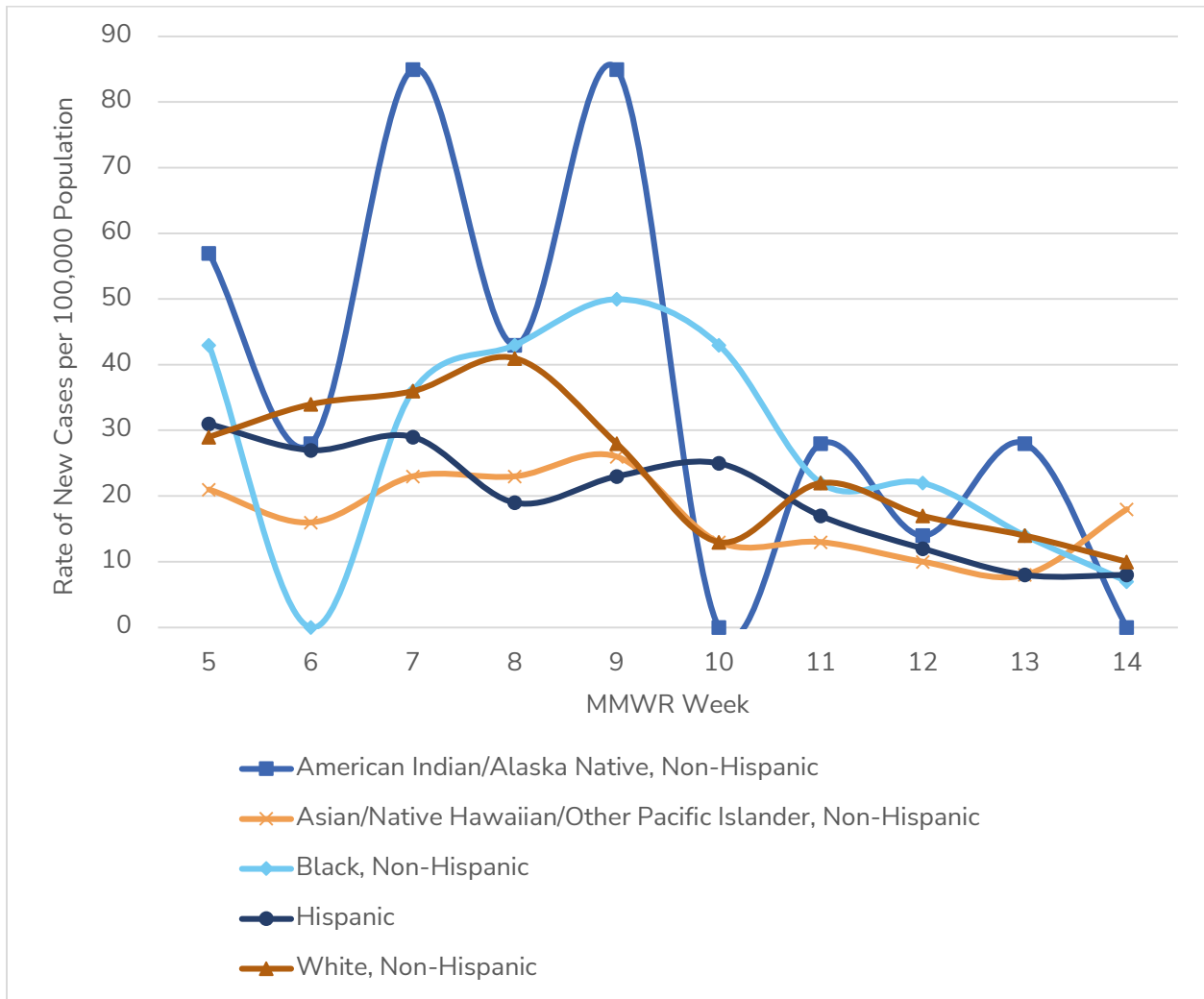
- In Washoe County, case counts decreased from a ten-week high of 35 new cases per 100,000 population in MMWR week 7 to 10 new cases per 100,000 population in MMWR week 14.
- In Nevada, case counts decreased from a ten-week high of 21 new cases per 100,000 population in MMWR week 5 to 6 new cases per 100,000 population in MMWR week 14.

**Figure 2. Rate of New Cases Reported by Age Group and MMWR Week, Washoe County, 2024**



- For MMWR week 5 through MMWR week 14, the 65+ age group consistently had the highest case rate.

**Figure 3. Rate of New Cases Reported by Race/Ethnicity\* and MMWR Week, Washoe County, 2024**



\*Note: From MMWR week 5 to MMWR week 14, 4.4% of cases were recorded as "Multiple", "Other", or "Unknown" and rates per 100,000 population are unable to be calculated for those categories.

- In MMWR week 6, those who identified as Black, Non-Hispanic had the lowest rate of new cases with 0 new cases per 100,000 population.
- In MMWR weeks 7 and 9, those who identified as American Indian/Alaska Native, Non-Hispanic had the highest rate of new cases with 85 new cases per 100,000 population each week, but the lowest rate of new cases in MMWR week 10 with 0 new cases per 100,000 population.

## Hospitalizations, ICU Status, & Deaths

COVID-19 hospitalizations are defined as those hospitalized for greater than or equal to 24 hours and have a positive SARS-CoV-2 laboratory test.

As of July 1, 2023, COVID-19-associated deaths include cases investigated for a confirmed SARS-CoV-2 infection and determined that COVID-19 was the cause of death or COVID-19 contributed to the cause of death and/or is specified on the death certificate as a cause of death. See current and previous full definitions in Glossary/Key Terms at the end of the report.

**Table 1. Number and Percent of New Cases Reported by Age and Hospitalization Status, MMWR Weeks\* 9 through 14, Washoe County, 2024**

			Age Group				
			0-17	18-29	30-49	50-64	65+
MMWR Week	9	Total Cases	23	19	41	25	40
		% Hospitalized	4.3%	5.3%	4.9%	12.0%	30.0%
	10	Total Cases	20	12	17	18	23
		% Hospitalized	10.0%	0.0%	0.0%	0.0%	13.0%
	11	Total Cases	14	10	25	14	42
		% Hospitalized	0.0%	0.0%	4.0%	21.4%	9.5%
	12	Total Cases	7	12	21	14	25
		% Hospitalized	0.0%	0.0%	4.8%	0.0%	12.0%
	13	Total Cases	8	10	9	11	28
		% Hospitalized	12.5%	0.0%	0.0%	0.0%	35.7%
	14	Total Cases	8	7	16	10	11
		% Hospitalized	0.0%	0.0%	6.3%	0.0%	45.5%

\*Note: hospitalization totals for each week are subject to change as new reports are received on a daily basis and are often delayed, causing underreporting in more recent MMWR weeks.

- During MMWR weeks 9 through 14 the age group with the highest percentage of total cases resulting in hospitalization was the 65+ age group, with a high of 45.5% of cases hospitalized in MMWR week 14, except for MMWR week 11 when the 50-64 age group had the highest rate.

**Table 2. Number and Percentage of Cases Reported by Hospitalization and ICU Status by MMWR Week\*, Washoe County, 2024**

MMWR Week	New Cases	Hospitalized		ICU	
		#	%	#	%
5	160	7	4.4	2	1.2
6	157	10	6.4	0	0.0
7	179	14	7.8	1	0.6
8	174	15	8.6	1	0.6
9	148	19	12.8	0	0.0
10	90	5	5.6	1	1.1
11	105	8	7.6	0	0.0
12	79	4	5.1	0	0.0
13	66	11	16.7	1	1.5
14	52	6	11.5	1	1.9

\*Note: hospitalization and ICU totals for each week are subject to change as new reports are received on a daily basis and are often delayed, causing underreporting in more recent MMWR weeks.

**Table 3. COVID-19 Deaths by Age Group and Time Period\* of Death, Washoe County, 2020-2024**

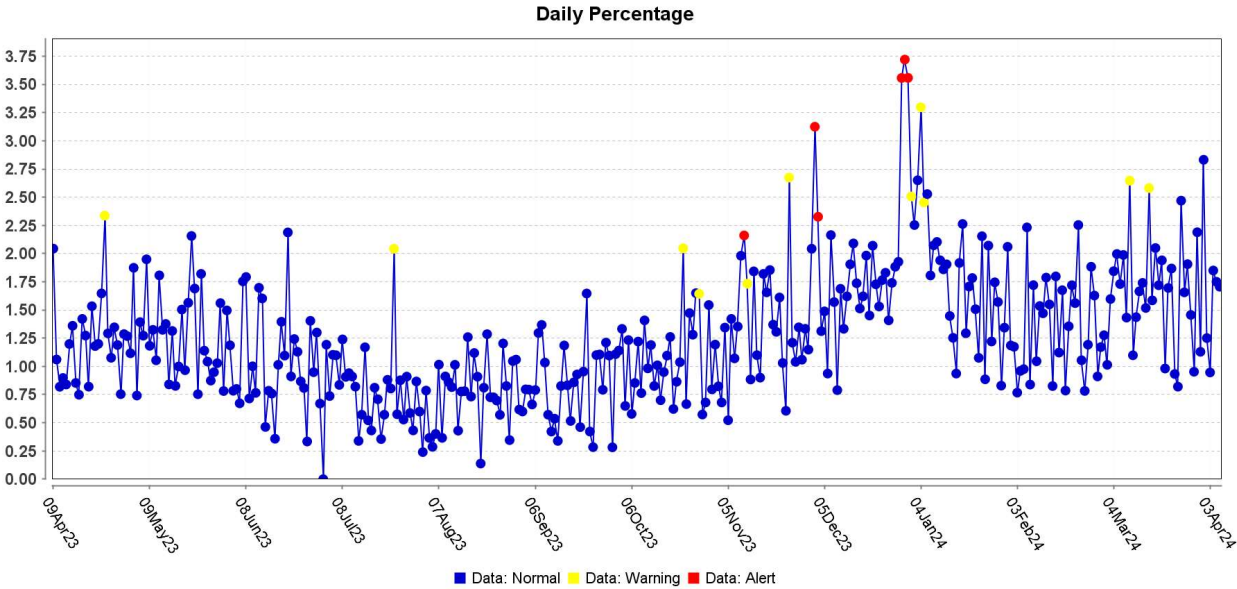
Time Period	Total Deaths	0-17 years	18-29 years	30-49 years	50-64 years	65+ years
2020 March - December	510	1	2	31	86	390
2021 Total	566	2	6	61	128	369
2022 Total	274	0	2	14	37	221
2023 Total	73	0	0	5	6	62
2024 January	7	0	0	0	1	6
2024 February	4	0	0	0	0	4
2024 March	1	0	0	0	0	1

\*Note: death totals are subject to change as new reports are received on a daily basis and are often delayed, causing underreporting in more recent months.

## Surveillance Data

The percentage of persons indicating COVID-19 as the reason for visit to the Emergency Room (ER) is presented in Figure 4. The overlay below depicts COVID-19 in blue. Alerts appear as yellow and/or red dots. They indicate an unusually high percentage of COVID-19 visits according to ESSENCE algorithms.

**Figure 4. Percentage of ER Visits Due to COVID in the Last Year, Washoe County**



Data source: ESSENCE

## Glossary/Key Terms

### Data

Unless otherwise noted, data in this report are based on symptom onset date (when available or applicable), otherwise sample collection date is used. The Nevada State Demographer's data were used for population and demographics for Washoe County throughout this report.

### COVID-19 Case

Coronavirus Disease 2019 (COVID-19) cases counted in this document are confirmed or probable cases as determined by meeting confirmatory laboratory evidence, clinical criteria, and/or epidemiologic linkage as defined on the CDC website here:

<https://ndc.services.cdc.gov/case-definitions/coronavirus-disease-2019-2021/>

### COVID-19 Hospitalization

COVID-19 hospitalizations are counted as those hospitalized for greater than or equal to 24 hours and have a positive SARS-CoV-2 laboratory test.

As of October 2022, this includes any patient with a positive result on a SARS-CoV-2 laboratory test collected from 14 days before through three days after hospital admission.

- (<https://preparedness.cste.org/wp-content/uploads/2022/10/Interim-CSTE-Guidance-for-COVID-Hospitalization.pdf>)

### COVID-19 Death

As of January 1, 2022, both Confirmed and Probable COVID-19-associated deaths are included in the count.

- ([https://cdn.ymaws.com/www.cste.org/resource/resmgr/pdfs/pdfs2/20211222\\_interim-guidance.pdf](https://cdn.ymaws.com/www.cste.org/resource/resmgr/pdfs/pdfs2/20211222_interim-guidance.pdf))

Criteria for confirmed case death:

- The case meets the confirmed COVID-19 surveillance case definition, AND at least ONE of the following criteria is met:
- A case investigation determined that COVID-19 was the cause of death or contributed to the death.
- The death certificate indicates COVID-19 or an equivalent term as one of the causes of death, regardless of the time elapsed since specimen collection of the confirmatory laboratory test used to define the case.
- The death occurred within (and including) 30 days of specimen collection for the confirmatory laboratory test used to define the case and was due to natural causes (e.g., the Manner of Death is coded as "natural" on the death certificate.)



Criteria for probable case death:

- The case meets the probable COVID-19 case definition AND a case investigation determined that COVID-19 was the cause of death or contributed to the death; **OR**
- The case meets the probable COVID-19 surveillance case definition based on presumptive laboratory evidence AND death occurred within (and including) 30 days of specimen collection and was due to natural causes (e.g., the Manner of Death is coded as “natural” on the death certificate.); **OR**
- The case meets the probable COVID-19 surveillance case definition based on epidemiologic linkage and meeting clinical criteria, AND death occurred within (and including) 30 days of symptom onset and was due to natural causes (e.g., the Manner of Death is coded as “natural” on the death certificate.); **OR**
- The case meets the probable COVID-19 surveillance case definition based only on vital records criteria (i.e., a death certificate that lists COVID-19 disease or SARS-CoV-2 or an equivalent term as an underlying cause of death or a significant condition contributing to death and there is no confirmatory or presumptive laboratory evidence.)

As of July 1, 2023, in alignment with the CSTE laboratory criteria used to classify cases, COVID-19-associated deaths include:

- A case investigation for a confirmed SARS-CoV-2 infection determined that COVID-19 was the cause of death or contributed to the cause of death; **AND/OR**
- The death certificate lists a specific COVID-19 ICD code.

The previously used confirmed, probable, and suspected death classifications are discontinued.

## Links

**NNPH website for COVID-19 information and how to find vaccines**

<https://www.nnph.org/programs-and-services/ephp/communicable-diseases-and-epidemiology/educational-materials/COVID-19.php>

**Monitoring COVID-19 in Nevada**

<https://app.powerbigov.us/view?r=eyJrIjoiMjA2ZThiOWUtM2FlNS00MGY5LWFmYjUtNmQwNTQ3Nzg5N2I2liwidCI6ImU0YTM0MGU2LWI4OWUtNGU2OC04ZWZhLTE1NDRkMjcwMzk4MCI9>

**CDC COVID-19 Data Tracker** <https://covid.cdc.gov/covid-data-tracker/>

**Department of Health and Human Services Nevada Division of Public and Behavioral Health (DPBH) Technical Bulletins** [https://dph.nv.gov/Resources/Technical\\_Bulletins-New/](https://dph.nv.gov/Resources/Technical_Bulletins-New/)

**NNPH COVID-19 Surveillance Report 2020-2022** <https://www.nnph.org/programs-and-services/ephp/statistics-surveillance-reports/index.php>

**NNPH COVID-19 reports** <https://covid19washoe.com/daily-updates/washoe-county-covid-19-data-report/>