

COVID-19 Epidemiology Surveillance Program
Monthly COVID-19 Report: June 2024
MMWR Week #22 – 27, May 26 – July 6, 2024

Division of Epidemiology & Public Health Preparedness (EHPH) 775-328-2447

Adam Vazquez, MPH, COVID-19 Epidemiologist AVazquez@nnph.org

Lissa Callahan, COVID-19 Statistician LCallahan@nnph.org

Weekly Summary*

Metrics	MMWR Week 22	MMWR Week 23	MMWR Week 24	MMWR Week 25	MMWR Week 26	MMWR Week 27
Number of New Cases	106	114	134	166	143	143
New Cases per 100,000 Population	21	23	26	33	28	28
Hospitalizations**	14	13	10	13	7	7
Deaths**	0	2	0	1	0	0

*For definition and specifics on metrics summarized, please refer to corresponding sections.

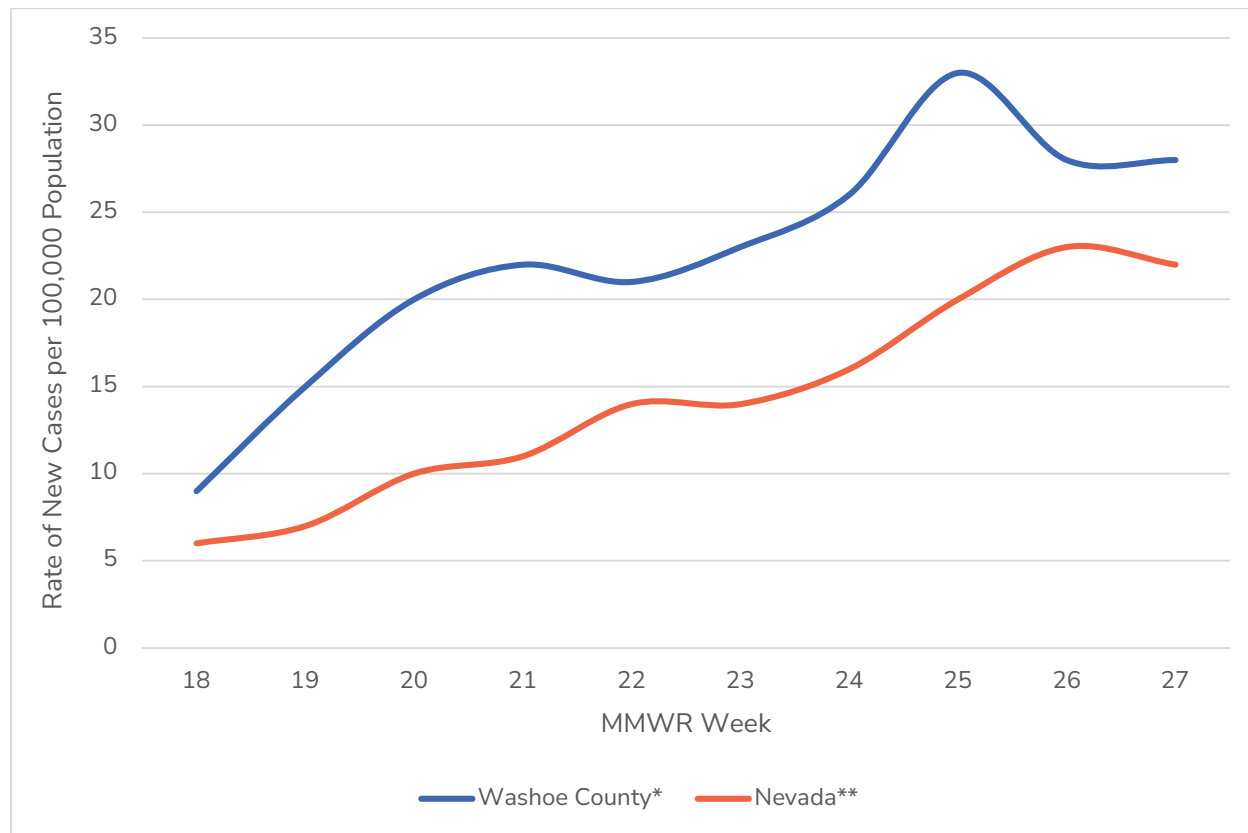
**Note: hospitalization and death totals for each week are subject to change as new reports are received on a daily basis and are often delayed, causing underreporting in more recent MMWR weeks.

Key Message(s)

- The number of cases reported in Washoe County increased from 21 new cases per 100,000 population in MMWR week 22 to 33 new cases per 100,000 population in MMWR week 25, and then decreased to 28 new cases per 100,000 population in MMWR weeks 26 and 27.
- With the departure of the Northern Nevada Public Health COVID-19 team at the end of July, this will be the final publication of this series of stand-alone Monthly COVID-19 Reports.

COVID-19 Case Information

Figure 1. Rate of New Cases Reported by MMWR Week, Washoe County and Nevada, 2024



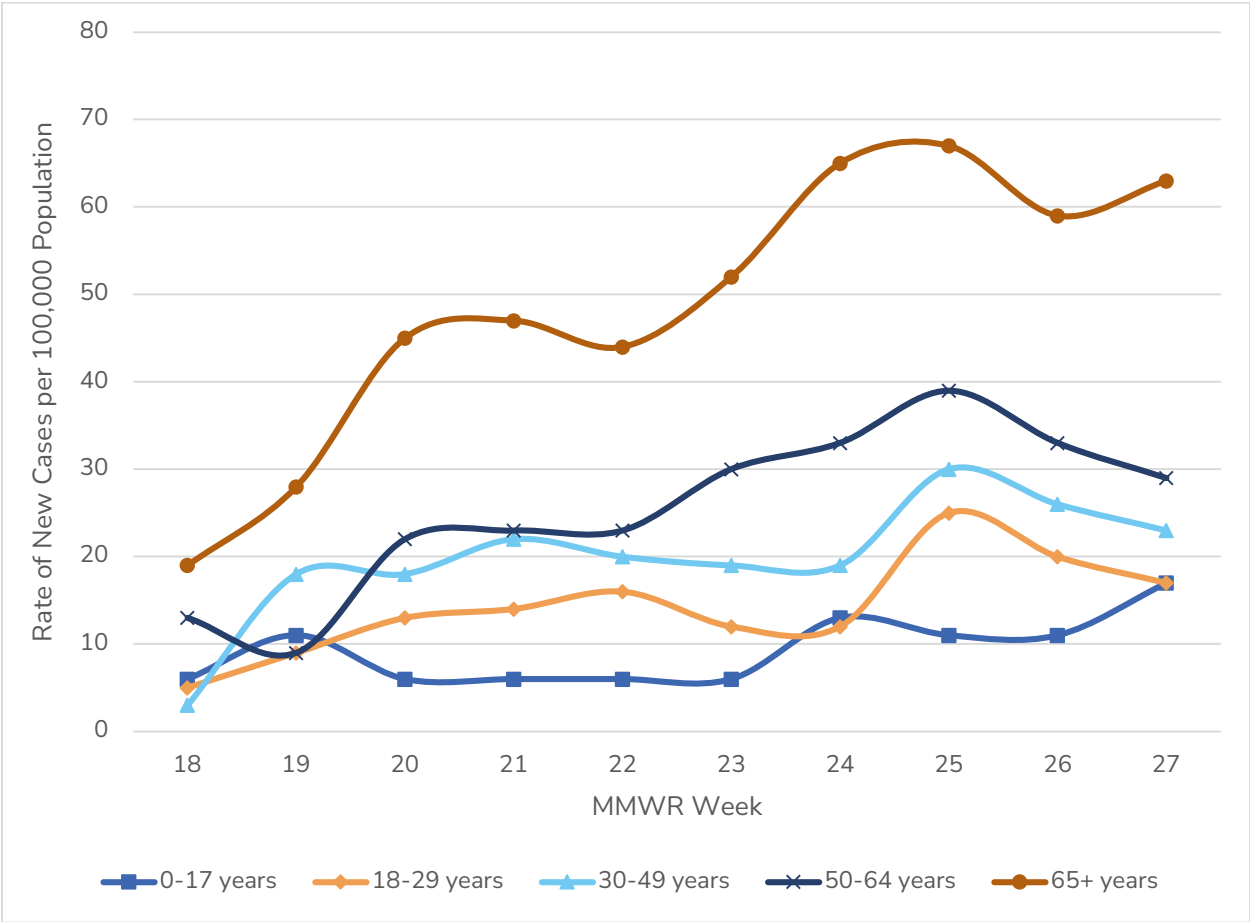
*Data source: Internal, NNPH

**Data Source:

<https://app.powerbigov.us/view?r=eyJrIjoia2ZThiOWUtM2FiNS00MGY5LWFmYjUtNmQwNTQ3Nzg5N2I2liwidCI6ImU0YTM0MGU2LWI4OWUtNGU2OC04ZWZhLTE1NDRkMjcwMzk4MCI9>

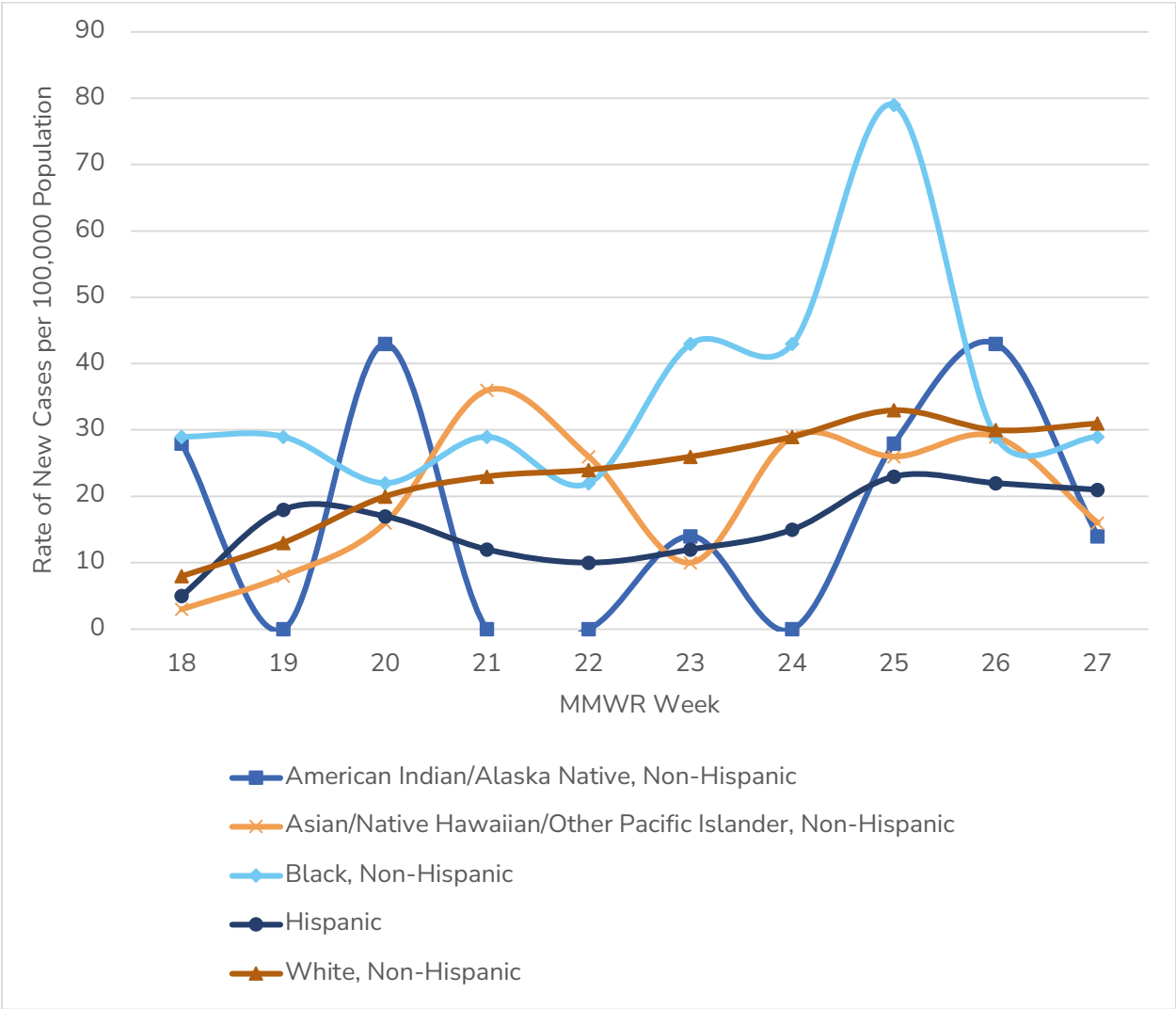
- In Washoe County, case counts increased from a ten-week low of 9 new cases per 100,000 population in MMWR week 18 to 33 new cases per 100,000 population in MMWR week 25 and then decreased to 28 new cases per 100,000 population in MMWR week 27.
- In Nevada, case counts increased from a ten-week low of 6 new cases per 100,000 population in MMWR week 18 to 23 new cases per 100,000 population in MMWR week 26 and then decreased to 22 new cases per 100,000 population in MMWR week 27.

Figure 2. Rate of New Cases Reported by Age Group and MMWR Week, Washoe County, 2024



- For MMWR week 18 through MMWR week 27, the 65+ age group consistently had the highest case rate.
- For MMWR week 20 through MMWR week 27, the age group with the lowest case rate was the 0-17 age group, except for MMWR week 24 when the 18-29 age group had the lowest case rate and MMWR week 27 when the 18-29 age group had the same case rate as the 0-17 age group.

Figure 3. Rate of New Cases Reported by Race/Ethnicity* and MMWR Week, Washoe County, 2024



*Note: From MMWR week 22 to MMWR week 27, 4.8% of cases were recorded as “Declined to answer”, “Multiple”, “Other”, or “Unknown” and rates per 100,000 population are unable to be calculated for those categories.

- In MMWR week 27, those who identified as White, Non-Hispanic had the highest rate of new cases with 31 new cases per 100,000 population.
- In MMWR week 27, those who identified as American Indian/Alaska Native, Non-Hispanic had the lowest rate of new cases per 100,000 population with 14 new cases per 100,000 population.

Hospitalizations, ICU Status, & Deaths

COVID-19 hospitalizations are defined as those hospitalized for greater than or equal to 24 hours and have a positive SARS-CoV-2 laboratory test.

As of July 1, 2023, COVID-19-associated deaths include cases investigated for a confirmed SARS-CoV-2 infection and determined that COVID-19 was the cause of death or COVID-19 contributed to the cause of death and/or is specified on the death certificate as a cause of death. See current and previous full definitions in Glossary/Key Terms at the end of the report.

Table 1. Number and Percent of New Cases Reported by Age and Hospitalization Status, MMWR Weeks* 22 through 27, Washoe County, 2024

			Age Group				
			0-17	18-29	30-49	50-64	65+
MMWR Week	22	Total Cases	7	15	26	21	37
		% Hospitalized	0.0%	6.7%	3.8%	9.5%	27.0%
	23	Total Cases	7	11	25	27	44
		% Hospitalized	0.0%	0.0%	0.0%	11.1%	22.7%
	24	Total Cases	14	11	24	30	55
		% Hospitalized	0.0%	0.0%	0.0%	10.0%	12.7%
	25	Total Cases	12	23	39	35	57
		% Hospitalized	0.0%	0.0%	5.1%	5.7%	15.8%
	26	Total Cases	12	18	33	30	50
		% Hospitalized	0.0%	0.0%	0.0%	0.0%	14.0%
	27	Total Cases	18	16	30	26	53
		% Hospitalized	5.6%	0.0%	3.3%	3.8%	7.5%

*Note: hospitalization totals for each week are subject to change as new reports are received on a daily basis and are often delayed, causing underreporting in more recent MMWR weeks.

- During MMWR weeks 22 through 27 the age group with the highest percentage of total cases resulting in hospitalization was the 65+ age group, with a high of 27.0% of cases hospitalized in MMWR week 22.

Table 2. Number and Percentage of Cases Reported by Hospitalization and ICU Status by MMWR Week*, Washoe County, 2024

MMWR Week	New Cases	Hospitalized		ICU	
		#	%	#	%
18	43	7	16.3	1	2.3
19	75	4	5.3	2	2.7
20	99	10	10.1	4	4.0
21	110	12	10.9	2	1.8
22	106	14	13.2	0	0.0
23	114	13	11.4	2	1.8
24	134	10	7.5	2	1.5
25	166	13	7.8	1	0.6
26	143	7	4.9	0	0.0
27	143	7	4.9	0	0.0

*Note: hospitalization and ICU totals for each week are subject to change as new reports are received on a daily basis and are often delayed, causing underreporting in more recent MMWR weeks.

Table 3. COVID-19 Deaths by Age Group and Time Period* of Death, Washoe County, 2020-2024

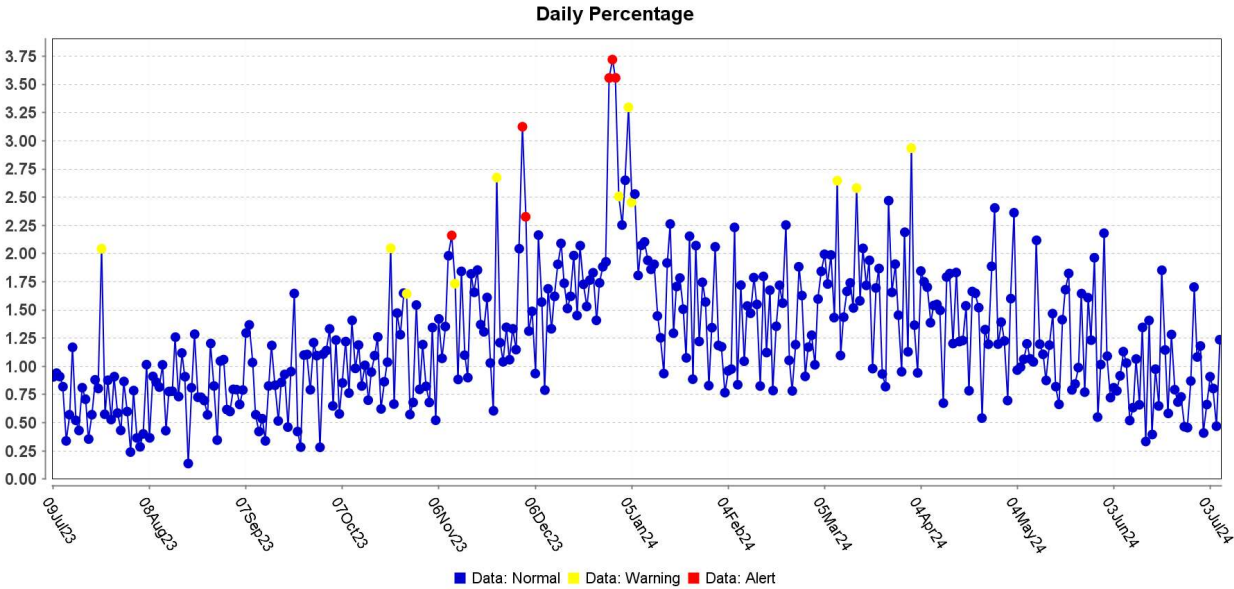
Time Period	Total Deaths	0-17 years	18-29 years	30-49 years	50-64 years	65+ years
2020 March - December	510	1	2	31	86	390
2021 Total	566	2	6	61	128	369
2022 Total	274	0	2	14	37	221
2023 Total	75	0	0	5	6	64
2024 January	7	0	0	0	1	6
2024 February	4	0	0	0	0	4
2024 March	1	0	0	0	0	1
2024 April	1	0	0	0	0	1
2024 May	1	0	0	0	0	1
2024 June	3	0	0	0	0	3

*Note: death totals are subject to change as new reports are received on a daily basis and are often delayed, causing underreporting in more recent months.

Surveillance Data

The percentage of persons indicating COVID-19 as the reason for visit to the Emergency Room (ER) is presented in Figure 4. The overlay below depicts COVID-19 in blue. Alerts appear as yellow and/or red dots. They indicate an unusually high percentage of COVID-19 visits according to ESSENCE algorithms.

Figure 4. Percentage of ER Visits Due to COVID in the Last Year, Washoe County



Data source: ESSENCE

Glossary/Key Terms

Data

Unless otherwise noted, data in this report are based on symptom onset date (when available or applicable), otherwise sample collection date is used. The Nevada State Demographer's data were used for population and demographics for Washoe County throughout this report.

COVID-19 Case

Coronavirus Disease 2019 (COVID-19) cases counted in this document are confirmed or probable cases as determined by meeting confirmatory laboratory evidence, clinical criteria, and/or epidemiologic linkage as defined on the CDC website here:

<https://ndc.services.cdc.gov/case-definitions/coronavirus-disease-2019-2021/>

COVID-19 Hospitalization

COVID-19 hospitalizations are counted as those hospitalized for greater than or equal to 24 hours and have a positive SARS-CoV-2 laboratory test.

As of October 2022, this includes any patient with a positive result on a SARS-CoV-2 laboratory test collected from 14 days before through three days after hospital admission.

- (<https://preparedness.cste.org/wp-content/uploads/2022/10/Interim-CSTE-Guidance-for-COVID-Hospitalization.pdf>)

COVID-19 Death

As of January 1, 2022, both Confirmed and Probable COVID-19-associated deaths are included in the count.

- (https://cdn.ymaws.com/www.cste.org/resource/resmgr/pdfs/pdfs2/20211222_interim-guidance.pdf)

Criteria for confirmed case death:

- The case meets the confirmed COVID-19 surveillance case definition, AND at least ONE of the following criteria is met:
- A case investigation determined that COVID-19 was the cause of death or contributed to the death.
- The death certificate indicates COVID-19 or an equivalent term as one of the causes of death, regardless of the time elapsed since specimen collection of the confirmatory laboratory test used to define the case.
- The death occurred within (and including) 30 days of specimen collection for the confirmatory laboratory test used to define the case and was due to natural causes (e.g., the Manner of Death is coded as "natural" on the death certificate.)

Criteria for probable case death:

- The case meets the probable COVID-19 case definition AND a case investigation determined that COVID-19 was the cause of death or contributed to the death; **OR**
- The case meets the probable COVID-19 surveillance case definition based on presumptive laboratory evidence AND death occurred within (and including) 30 days of specimen collection and was due to natural causes (e.g., the Manner of Death is coded as “natural” on the death certificate.); **OR**
- The case meets the probable COVID-19 surveillance case definition based on epidemiologic linkage and meeting clinical criteria, AND death occurred within (and including) 30 days of symptom onset and was due to natural causes (e.g., the Manner of Death is coded as “natural” on the death certificate.); **OR**
- The case meets the probable COVID-19 surveillance case definition based only on vital records criteria (i.e., a death certificate that lists COVID-19 disease or SARS-CoV-2 or an equivalent term as an underlying cause of death or a significant condition contributing to death and there is no confirmatory or presumptive laboratory evidence.)

As of July 1, 2023, in alignment with the CSTE laboratory criteria used to classify cases, COVID-19-associated deaths include:

- A case investigation for a confirmed SARS-CoV-2 infection determined that COVID-19 was the cause of death or contributed to the cause of death; **AND/OR**
- The death certificate lists a specific COVID-19 ICD code.

The previously used confirmed, probable, and suspected death classifications are discontinued.

Links

NNPH website for COVID-19 information and how to find vaccines <https://www.nnph.org/programs-and-services/ehp/communicable-diseases-and-epidemiology/educational-materials/COVID-19.php>

Monitoring COVID-19 in Nevada

<https://app.powerbigov.us/view?r=eyJrIjojMjA2ZThiOWUtM2FlNS00MGY5LWFmYjUtNmQwNTQ3Nzg5N2I2IiwidCI6ImU0YTM0MGU2LWI4OWUtNGU2OC04ZWZhLTE1NDRkMjcwMzk4MjM5>

CDC COVID-19 Data Tracker <https://covid.cdc.gov/covid-data-tracker/>

Department of Health and Human Services Nevada Division of Public and Behavioral Health (DPBH) Technical Bulletins https://dphh.nv.gov/Resources/Technical_Bulletins-New/

NNPH COVID-19 Surveillance Report 2020-2022 <https://www.nnph.org/programs-and-services/ehp/statistics-surveillance-reports/index.php>

NNPH COVID-19 reports <https://covid19washoe.com/daily-updates/washoe-county-covid-19-data-report/>